



North Eastern Regional Power Committee

Agenda

For

54th Commercial Sub-Committee Meeting

CONFIRMATION OF MINUTES

1. CONFIRMATION OF MINUTES OF THE 53rd COMMERCIAL SUB-COMMITTEE MEETING OF NERPC.

Minutes of the 53rd CC Meeting held on 18th October 2024 at State Banquet Hall, Itanagar was circulated vide no. No.: NERPC/COM/CCM/2024/4725-4771 dated 25th October 2024.

Following comment(s)/observation(s) were received from the constituents-

Utility	Agenda Item	Recorded in MoM	Comments
NERTS	Agenda 9.1	"....."NERTS representative updated forum that MSPCL, Manipur has already cleared the dues."."	"...may please be corrected as NERTS representative updated forum that Mizoram has already cleared the dues. NERTS have not received any payment from MSPCL in FY 2024-25.

The Sub-committee may confirm the minutes of 53rd CCM of NERPC with the above modification(s).

ITEMS FOR DISCUSSION

2 AGENDA ITEMS FROM NERPC**2.1 Recent Key Regulations/orders:**

The following CERC regulations/order(s) have been notified:

1. Central Electricity Regulatory Commission (Deviation Settlement Mechanism and Related Matters) (First Amendment) Regulations, 2024).
2. Central Electricity Regulatory Commission (Indian Electricity Grid Code) (First Amendment) Regulations, 2024.

This is for information of the members.

2.2 NERPC Board Fund Contribution status - reg.:

2.2.1 The status of payment for FY 2023-24 (as on 31.12.2024) is as given below:

F.Y 2023-24			
Constituents	Status of Payment	Constituents	Status of Payment
NTPC	Payment Received	Ar. Pradesh	Payment Received
NHPC	Payment Received	Assam / APDCL	Payment Received
PTC	Payment Received	Manipur/MSPDCL	Payment Received
NVVN	Payment Received	Meghalaya/MeECL	Payment Received
OTPC	Payment Received	Mizoram	Payment Received
NEEPCO	Payment Received	Nagaland	Payment Received
PGCIL	Payment Received	Tripura/TSECL	Payment Received
KMTL	Payment Received		

All constituents have already deposited their respective amount towards Board Fund of NERPC for FY 2023-24.

2.2.2 The status of payment for FY 2024-25 (as on 31.12.2024) is as given below:

A. Regular Members:

F.Y 2024-25			
Constituents	Status of Payment	Constituents	Status of Payment
NTPC	Payment Received	Ar. Pradesh	Payment Received
NHPC	Payment Received	Assam / APDCL	DUE
PTC	DUE	Manipur/MSPDCL	Payment Received
NVVN	Payment Received	Meghalaya/MeECL	Payment Received
OTPC	Payment Received	Mizoram	Payment Received
NEEPCO	Payment Received	Nagaland	Payment Received

PGCIL	Payment Received	Tripura/TSECL	Payment Received
NER-II TL(Indigrid)	Payment Received		

B. Non-Member Participants:

Constituents	Status of Payment
NETC	Payment Received
KMTL	Payment Received
MUML	Payment Received

Concerned constituents are requested to kindly deposit their respective amount towards Board Fund of NERPC for FY 2024-25 at the earliest.

2.3 NERPC Secretariat Establishment Fund Contribution status - reg.:

2.3.1 The status of payment for FY 2023-24 (as on 31.12.2024) is as given below:

F.Y 2023-24			
Constituents	Status of Payment	Constituents	Status of Payment
NTPC	Payment Received	Ar. Pradesh	Payment Received
NHPC	Payment Received	AEGCL	Payment Received
PTC	Payment Received	APDCL	Payment Received
NVVN	Payment Received	APGCL	Payment Received
OTPC	Payment Received	MePTCL	Payment Received
NEEPCO	Payment Received	MePDCL	Payment Received
PGCIL	Payment Received	MePGCL	Payment Received
KMTL	Payment Received	MSPCL	DUE
TPTL	DUE	MSPDCL	Payment Received
TPGCL	DUE	Mizoram	Payment Received
TSECL	Payment Received	Nagaland	Payment Received

Concerned constituents are requested to kindly deposit their respective amount towards “NERPC Secretariat Establishment Fund” for FY 2023-24 at the earliest.

2.3.2 The status of payment for FY 2024-25 (as on 31.12.2024) is as given below:

A. Regular Members:

F.Y 2024-25			
Constituents	Status of Payment	Constituents	Status of Payment
NTPC	Payment Received	Ar. Pradesh	DUE
NHPC	Payment Received	AEGCL	Payment Received
PTC	Payment Received	APDCL	DUE

NVVN	Payment Received	APGCL	DUE
OTPC	Payment Received	MePTCL	DUE
NEEPCO	Payment Received	MePDCL	DUE
PGCIL	Payment Received	MePGCL	DUE
NER-II TL(Indigrid)	Payment Received	MSPCL	DUE
TPTL	DUE	MSPDCL	DUE
TPGCL	DUE	Mizoram	Payment Received
TSECL	Payment Received	Nagaland	Payment Received

B. Non-Member Participants:

Constituents	Status of Payment
NETC	Payment Received
KMTL	Payment Received
MUML	Payment Received

Concerned constituents are requested to kindly deposit their respective amount towards “NERPC Secretariat Establishment Fund” for FY 2024-25 at the earliest.

2.4 Roaster of CCM-reg.

As members of NERPC are aware that Commercial Co-ordination Meetings are being hosted by constituents on rotation basis. In this regard 55th, 56th, 57th & 58th CC meeting has been proposed as:

55th CCM- By Tripura (in the month of Apr’25)

56th CCM- By NTPC (in the month of Aug’25)

57th CCM- By Assam (in the month of Nov’25)

58th CCM- By Manipur (in the month of Feb’26)

For information.

2.5 Proposal for sanction of budget for organizing 16th NPC Meeting:

As per the roaster finalized in the 5th NPC meeting and the subsequent decision made by the committee in the 15th NPC meeting, it was agreed that the 16th NPC meeting would be hosted by NERPC as per roaster. The estimated cost for organizing the 16th NPC meeting will be around ₹25 lakh.

The proposed expenditure will be met through “NERPC Board Fund”.

No additional fund required from NERPC constituents. The surplus amount in board fund will be utilized for organizing 16th NPC Meeting.

For information.

2.6 Nomination for Audit of “NERPC Secretariat Establishment Fund” and “NERPC Board Fund”

Presently NERPC Secretariat maintains two funds namely “NERPC Secretariat Establishment Fund” and “NERPC Board Fund”. As per approval in 26th TCC/NERPC meeting NERPC Secretariat availed consultancy services with specialization on finance and accounting for management of NERPC Funds and completed audit for “NERPC Secretariat Establishment Fund” (from 1st July’23 to 30th Sept’24) and “NERPC Board Fund” (from 1st Oct’22 to 30 Sept’24), which was carried out by a Chartered Accountant (CA).

In order to carry out external audit, NERPC Secretariat requested to nominate the officers among the constituent members these two funds.

Sub-committee may please deliberate.

2.7 Recovery of Relinquishment charges as per the direction of CERC in order dated 08.03.2019:

A letter from SRPC wherein, it is referred that the CERC Order dated 08.03.2019 in Petition No. 92/MP/2015, directed CTU to assess the stranded transmission capacity and calculate the charges payable towards relinquishment and the relinquishment charges paid by LTA customers shall be used for reducing transmission charges payable by other long term and medium term customers in the year in which such compensation is due in the ratio of transmission charges payable for that year by such long term customers and medium term customers. Accordingly, the relinquishment charges had been computed by CTUIL and uploaded on its website (Before the CERC Order, many IPPs/generators had relinquished the LTA and the charges were being recovered from the beneficiaries).

II. It is noted that some of the generators filed appeal in APTEL against the recovery. Insolvency proceedings (CIRPL) of some generators, among the above generators have been completed. Insolvency proceedings of some generators are currently underway. CTUIL informed that APTEL stayed raising of invoices against generators who are not under insolvency proceedings.

III. The Southern Regional Power Committee (SRPC) has been closely following up the matter of recovery of relinquishment charges and the implications of the APTEL stay order on raising bills, with the CTUIL and deliberating the issue in the successive meetings of RPC and commercial subcommittee, ever since. During recent SRPC meeting, it has been emphasized that coordinated efforts across all RPCs are essential to address this matter effectively.

IV. The current litigations led to delays in the recovery of charges and have impacted the beneficiaries across regions. CTUIL has been actively pursuing the vacation of the APTEL stay order and requested the support of all stakeholders, including DISCOMs, through representation/implead in the APTEL case.

V. In light of the discussions and recommendations of SRPC members in the meeting held on 18.11.2024, it is requested that each RPC may actively participate in the matter and the following suggestions emerged in the SRPC meeting are forwarded for further needful:

1. Representation: Encourage all DISCOMs in the Region to actively participate in the Judicial proceedings. This collective action can emphasize the liabilities of beneficiaries and the financial impact on the pool.

2. Expert Legal Consultation: Obtain and share expert legal opinions on the relinquishment charge recovery to strengthen the case, across judicial platforms.

3. Awareness and Preparedness: CTUIL has assured the sharing of hearing schedules and the list of appeals with constituents. It is suggested that this practice be adopted by all RPCs to ensure better preparedness for court proceedings.

4. Coordination across RPCs: Propose regular communication among RPCs to exchange updates and formulate a unified approach to address the matter of recovery of relinquishment charges and stay order/legal issues effectively.

It is felt that by collectively engaging in this matter, the resolution of the challenges can be expedited and ensure equitable recovery, as early as possible, that would protect the interests of all stakeholders. SRPC remains committed to supporting collaborative efforts and is open to further discussions to facilitate this process.

SRPC requested that each RPC may deliberate on the above points and initiate suitable actions.

Sub-committee may please deliberate.

2.8 Proposal to include NETC as permanent member of NERPC:

North East Transmission Company Ltd. (NETC) is one of the transmission licenses operating in the North Eastern Region. NETC has the following shareholders:

OTPC-26%

PGCIL-26%

AEGCL-13%

Govt. of Tripura-10%

Govt. of Nagaland-4%

Govt. of Mizoram-10%

Govt. of Manipur-6%

Govt. of Meghalaya-5%

From the above it has found that NETC is a kind of PSUs which has more than 50% share of CPSUs.

As per Ministry of Power resolution dated 25th May 2005 “A representative of every transmission licensee including deemed licensees operating in the region will be the member of RPCs. In view of the above it is proposed to include NETC as permanent member of NERPC as NETC falls under the category of PSU.

Sub-committee may please deliberate.

2.9 Procurement of cold spare transformers and reactor for Northern Eastern Region:

CERC had set up a committee on dated 15.03.2018 consisting of representatives from CERC, NLDC, CEA & POWERGRID under the Chairmanship of the Chief (Engineering) of the CERC to assess the requirement of regional spares including bus reactors, line reactors, ICTs, etc. This would ensure reliability of the grid and reduce downtime in case of any failure/outage.

1. As per CERC Committee recommendation, the following spares transformers & reactors are required to be kept as spare for North Eastern Region as per POWERGRID assets base:

Trans former:

MVA Rating of Transformers	Voltage Rating	Total Installed unit in POWER GRID	Spare Required as per CERC report	RPC Approved Spares	Qty Proposed for procurement	Location/State of spare requirement
3Ø-315MVA	400/132 /33kV	1	1	0	1	Assam
3Ø-160MVA	220/132 kV	6	2	1	1	Nagaland
3Ø-100MVA	220/132 kV	2	2	1	1	Assam
3Ø-50MVA	132/33kV	4	2	1	1	Manipur

TOTAL:	4
Tentative Cost	43.94 Cr

Reactors:

MVAR Rating of Reactors	Voltage Rating	Total Installed unit	Spare Required as per CERC report	RPC Approved Spares	Qty Proposed for procurement	Spare requirement
3Ø-125MVAR R#	420kV	6	2	1	1	Manipur
3Ø-63MVAR *	420kV	32	3	2	1	Manipur
3Ø-31.5MVAR R	245kV	1	1	0	1	Nagaland
3Ø-20MVAR	245kV	1	1	0	1	Assam
3Ø-20MVAR	132kV	7	3	0	3	Manipur, Mizoram, Tripura
TOTAL:				7		
Tentative Cost				34.56 Cr		

Quantity considered for both 125MVAR & 80MVAR reactors in Manipur. In case of failure of existing 80MVAR reactor, replacement can be done with 125MVAR.

Quantity considered for both 50MVAR & 63MVAR reactors. In case of failure of existing 50MVAR reactor, replacement can be done with 63MVAR.

In view of the above, it is requested for approval for procurement of cold spare transformers & reactors of various ratings as per CERC. The tariff for the investment made is to be shared by constituents as per the provisions of CERC Regulation.

As per the deliberation of the 220th OCCM, the forum requested PGCIL to submit the complete details regarding state wise requirement of spares as well details of available spares. Accordingly, PGCIL has submitted the requisite details via e-mail dated 29/11/24. The list is attached as **Annexure 2.9**.

As per the deliberations in 221st OCC forum, representative of Tripura intimated the forum that they would submit their views in the next OCC forum. Further, NERPC advised NERLDC to conduct a detailed study about the requirement of reactors, installed in short T/Ls(<100km) and their impact on grid voltage. And if any reactor is found to be redundant (having nominal effect on the grid voltage) after the due study, the same can be taken out and be used as a spare.

In the 222nd OCC meeting of NERPC NERLDC presented the study regarding the requirement of reactors and their impact on grid voltage particularly for 400 kV Balipara-BNC corridor. The study also highlighted that the line reactor (switchable) at Balipara end is necessary to maintain the grid voltage once Lower Subansiri HEP comes into service.

The forum agreed in principle to the proposed number of spare reactors at different locations and further deliberations shall follow in commercial subcommittee meeting.

Sub-committee may please deliberate.

3. AGENDA ITEMS FROM ARUNACHAL PRADESH

3.1 "Excess Payment made to be recovered from NEEPCO Ltd., w.r.t Pare HEP:

This office sought details of energy supplied from Pare HEP, specifying the quantum of free power and energy billed to Arunachal Pradesh. The details were submitted by NEEPCO via email on November 14, 2024, at 1:25PM, where a discrepancy was observed.

As per NEEPCO's statement, the total supplied energy for December 2019 is 3.58688 MWh, and the billed energy is 1.1272865 MWh; the rest was the free power. However, upon verification with the bill, it was found that the entire supplied energy of 3.58688 MWh was billed without accounting for the 12% free power entitlement of Arunachal Pradesh, which was paid in full by the Department of Power, Arunachal Pradesh.

In this regard, a letter dated December 26, 2024, was sent to NEEPCO Ltd., requesting them to adjust the corresponding amount for the free power entitlement of 2.270394 MWh for December 2019 in the next bill for Pare Hydro

Electric Project. A response from NEEPCO is still awaited. Therefore, the NERPC is requested to issue direction to NEEPCO to resolve this issue at the earliest.

Sub-committee may please deliberate.

4. AGENDA ITEMS FROM NEEPCO

4.1 Under Recovery of fuel cost of NEEPCO Gas Stations due to frequent change in schedule:

The Ramp rate of gas stations is 3 % /Min which translates to 131 MW /Block for Assam Gas based station (AGBPS) and similarly 60 MW /Block for Agartala Gas Based Power Station (AgGBPS). Due to the implementation of TRAS, both the Gas Based Power Stations are directed to increase or decrease the schedule to the tune of 50-100 MW /block for AGBPS and 25 to 35 MW in case of AgGBPS, very frequently, during the course of the day. Further, it has been noted that during the Solar hours, the schedule given by the RLDC is even less than the technical minimum. It may please be noted that the stations get gas from M/s Oil India Limited for AGBPS and M/s GAIL for AgGBPS which are directly connected to isolated gas fields. The gas sellers (Oil India Limited/GAIL) cannot increase the gas quantity at the desired technical parameters for the generating stations when there is a need to increase the generation. At the same time reduction of generation as per the schedule is also not possible at the rate asked for, as decrease in gas consumption creates gas flare up issues at the gas well sites. Due to these constraints, Gas based generating stations mainly in NER cannot synchronize their generation in tune to the demand of RLDC. This leads to huge financial impact on the Generating stations causing under recovery of fuel cost due to the stringent extant DSM Regulations. As per the DSM Regulation only 10 % of deviation from the schedule is allowed. The fuel cost under recovery of NEEPCO gas stations are as follows upto the 3rd Qtr of the Financial year 2025: -

AGBPS: Rs. 71 cr ,

AgGBPS: Rs 21 cr .

1. The possible solution of the issue is to maintain a constant schedule (at least up to the Technical Minimum)
2. In case of ramp up and down, the change in schedule may be restricted to 1% per minute considering the isolated gas grid of NER.

Therefore, the proposal is placed for deliberation and approval in the house under the aegis and guidance of NERPC. Further it is requested that NERPC may kindly

take-up the issue with Hon'ble CERC for necessary redressal and amendment.

Sub-committee may please deliberate.

4.2 Provisional Tariff for Khandong Hydro Power Station (2x50MW=50MW) after Reconstruction, Renovation and Modernization:

After completion of Reconstruction, Renovation and Modernization of the 2x50 MW Kopili Hydro Power Station, 1st Unit of the is scheduled for commissioning in the month of May 2025 and last unit in the month of July 2025.

Consent for undertaking the Reconstruction, Renovation & Modernization works of the Power Station with levelized tariff over the expected 25 years useful life of Rs. 3.24/unit has been conveyed by all the beneficiaries. However, after certain modifications in the DPR due to submergence of the Power Station, cost for R&M has increased substantially and accordingly the tariff is expected to increase from the previously calculated value. The revised Civil and E/M cost has already been approved by the CEA and the approval of IDC &IEDC is awaited as on date. Further, a Petition has already been filed before the Hon'ble CERC for approval of the DPR.

Application for determination of tariff shall be filed before the Hon'ble Commission on completion of the works as per the Regulation 9 of the Central Electricity Regulatory Commission (Terms and condition of Tariff) Regulations, 2024. However, till determination of tariff by CERC, it is proposed that a provisional Tariff of Rs.3.24/unit as agreed by the beneficiaries be adopted by the House for the purpose of billing for power supplied from the Power Station from COD till issuance of tariff by CERC. The proposal for billing at the proposed provisional tariff of Rs. 3.24/kWh is subject to suitable adjustment on determination of final tariff by CERC.

Therefore, the proposal is placed for deliberation and approval in the house under the aegis and guidance of NERPC.

Sub-committee may please deliberate.

5. AGENDA ITEMS FROM NERLDC

5.1 *Status of outstanding against Deviation charges as on 30/09/2024 is shown in the following table:*

Status of outstanding against Deviation charges as on 30/09/2024 is shown in the following table:

Constituent	O/S Payable (INR)	Remarks
अरुणाचल प्रदेश / Ar. Pradesh	3,94,85,796	Outstanding from Week-35 FY 24-25
मणिपुर / Manipur	2,01,98,967	Outstanding from Week-25 FY 24-25
त्रिपुरा / Tripura	4,81,59,804	Outstanding from Week-26 FY 24-25

All the pool members are requested to clear outstanding dues as shown above within the stipulated timeline as per CERC DSM Regulations to avoid late payment surcharge.

Sub-committee may please deliberate.

5.2 Reactive Pool Account outstanding:

Status of outstanding against Reactive charges as on 30/09/2024 is shown in the following table:

Constituent	O/S Payable (INR)	Remarks
Manipur	72,066	Outstanding from Week-25 FY 24-25
Meghalaya	7,12,619	Outstanding from Week-25 FY 24-25
Tripura	2,80,043	Outstanding from Week-33 FY 24-25

All the pool members are requested to clear outstanding dues as shown above within the stipulated timeline to avoid late payment surcharge.

Sub-committee may please deliberate.

5.3 Signing of DSM & Reactive Reconciliation Statements:

Status of signing of Reconciliation statements of DSM & Reactive as on 30/09/2024:

Pending signing of DSM reconciliation with –Manipur (for Quarter-2, FY 2024-25)

Pending signing Reactive reconciliation with – Manipur (Quarter-2, FY 2024-25)

Constituents are requested to sign the reconciliation statements as early as possible.

Sub-committee may please deliberate.

5.4 Opening of Letter of Credit for default in payment of Fees and Charges:

As per Clause no 32 of Fees and Charges Regulations 2024,

(1) Users shall make regular payment of RLDC charges. In case of default in making payment of RLDC charges, the concerned RLDC may direct the user to maintain an unconditional, irrevocable, and adequate PSM in the form of a

Letter of Credit.

(2) PSM shall be equivalent to 110% of last year's maximum monthly LDC Charges.

In view of the same, NERLDC had written letter to P&ED Mizoram, MSPDCL and DoP Nagaland for opening of Letter of Credit (LC) for FY 2024-25 within one month due to default in payment during FY 2023-24.

Entity Name	No. of instances in which payment done after due date during FY 2023-24	Max monthly LDC Charges during 2023-24	LC Amount (In Rupees) = 110% of Max monthly LDC Charges
P&E Dept., Mizoram	9	6,93,266	7,62,593
MSPDCL	8	10,40,727	11,44,800
DoP, Nagaland	1	8,66,136	9,52,750

However, LC is yet to be opened by any of the mentioned Users. Reminder Letters sent from NERLDC to constituents for Opening LC are attached herewith **(Annex-5.4)**. It is requested to update the status of the same.

Sub-committee may please deliberate.

5.5 Letter from CEA regarding Charging of Electric Supply lines without having obtained PTCC approval:

As per section 80 of "Central Electricity Authority (Measures relating to Safety and Electric Supply) Regulations, 2023" specifies as follows:

"Protection against electromagnetic interference. – The owner of every electric supply line of voltage level 11 kV or above shall obtain the clearance of Power Telecommunication Co-ordination Committee to ensure the safety of the personnel and telecommunication line as per the requirement of section 160 of the Act."

In view of the above all transmission utilities (including STUs) are requested to furnish PTCC approval for transmission lines before first time energization and integration.

Letter dated 17.10.2024 from CEA is attached for your kind information and necessary action please. **(Annex-5.5)**

In the 221st OCC meeting of NERPC forum advised all the FTC issuing authorities (RLDC, SLDCs and Discoms/NERPC) to be aware about the required PTCC approval before first time charging of elements. The forum opined that the matter shall also be taken up in upcoming CCM/RPC for information to Discoms.

Sub-committee may please deliberate.

5.6 Signing of RLDC Fee and Charges Reconciliation Statements:

NERLDC Fees and Charges Reconciliation Statements for Q3 of FY 2024-25 have been issued. All the users are requested to send the signed Reconciliation Statements at the earliest.

Sub-committee may please deliberate.

5.7 Shortfall Bill Published by NLDC for the period 16-09-2024 to 22-12-2024:

As per CERC DSM regulation 2024 9(7) NLDC prepared a detailed procedure for recovery of charges in case of deficit in Deviation and Ancillary Services Pool Account. In accordance with the clause 9(7) and CERC approved “Detailed procedure for recovery of charges in case of deficit in the Deviation and Ancillary Pool Account” dated 15-10-2024 NLDC has issued deficit bill for the period 16-09-2024 to 22-12-2024 Dated 13-01-2025.

SL.NO.	State/ Drawee	Total Payable Amount
1	Assam	₹ 2,86,14,499
2	Meghalaya	₹ 27,55,986
3	Manipur	₹ 27,78,240
4	Arunachal	₹ 28,43,106
5	Nagaland	₹ 22,01,173
6	Mizoram	₹ 15,95,553
7	Tripura	₹ 47,56,413
8	HVDC_BNC	₹ 19,649
	Total	₹ 4,55,64,619

All the pool members are requested to clear outstanding dues as shown above within the stipulated timeline as per CERC Approved procedure to avoid late payment surcharge.

Sub-committee may please deliberate.

5.8 Status of Outstanding Status for Legacy Dues:

Sl.NO.	State/ Drawee	Paid for Installment	Outstanding Dues for Installment
1	Manipur	0	20
2	Nagaland	4	16
3	Mizoram	2	18
4	Tripura	2	18

All the pool members are requested to clear outstanding dues as shown above within the stipulated timeline as per CERC Approved procedure to avoid late payment surcharge.

Sub-committee may please deliberate

5.9 Metering Philosophy used in NERLDC for energy accounting:

As per IEGC Clause 49(12)(h), RLDCs shall forward IEM readings to the concerned RPC on a weekly basis by each Thursday for the preceding week. It is noted that on certain occasions, not all the Main SEM data in the region are available within the prescribed timelines due to any number of reasons (DCD failure, Internet issue, Local PC software/Hardware issue etc.). In such cases, it is required to substitute the Main meter data with Check/Standby Meter data. In absence of Check/Standby meters, Net Bus summation is used to substitute Main meter. In absence of Net Bus Meters, SCADA/PMU data (to be provided by concerned entity/constituent) has been proposed here. The procedure to be used by NERLDC for the same is hereby annexed (**Annex-5.9**).

In the 222nd OCC meeting of NERPC forum agreed in principle to the draft metering philosophy prepared by NERLDC until a unified approach is adopted by NPC. The forum also invited comments from all stakeholders and referred the draft metering philosophy to commercial forum for further deliberation.

Sub-committee may please deliberate

5.10 Signing of TGNA bilateral payment reconciliation statement with CTU:

Quarterly reconciliation of TGNA bilateral payments with CTU is issued within 30 days after end of the quarter. It is requested to send the signed statement within 10 days after the issuance of the same; otherwise, it will be deemed reconciled.

Sub-committee may please deliberate

6. AGENDA ITEMS FROM NERTS**6.1 Outstanding dues:**

The total outstanding dues (pertaining to both PoC as well as non-PoC billing) payable by NER beneficiaries to **CTUIL/POWERGRID** as on **16.01.2025** is detailed below: -

(All Figures in Rs. Crores)

State/DIC	Outstanding dues > 45 days	Total Outstanding dues	Remarks
Arunachal Pradesh	0	5.28	<i>Approx. 1 receivable</i>
APDCL, Assam		49.07	<i>Approx. 1 receivable</i>
MSPDCL, Manipur	5.98	11.18	<i>Approx. 03 months receivables</i>
MSPCL, Manipur	5.03	5.03	<i>Approx. 45 months receivables and outstanding Non POC arrear bills</i>
MeECL, Meghalaya	0.00	7.85	<i>Approx. 02month receivables</i>
Mizoram	0.08	4.04	<i>Approx. One month Transmission Charges bill and outstanding NON POC Surcharge bills</i>
Nagaland	0.00	6.09	<i>Approx. 01 months receivables</i>
TSECL, Tripura	9.99	18.35	<i>Approx. 02 months receivables</i>
NHPC	0.02	0.02	<i>01No RTDA bill</i>

Concerned DICs with >45 days outstanding dues, viz. MSPDCL, MSPCL, Mizoram and TSECL, Tripura may be impressed upon to clear the outstanding dues immediately since POWERGRID and other transmission licensees (on behalf of whom CTUIL does the billing & collection) are facing financial constraints due to

accumulation of such huge outstanding dues. **Further MSPCL is requested to liquidate the long pending outstanding dues of POWERGRID against Non POC Bills which also attract audit observations.**

Sub-committee may please deliberate.

6.2 Status of LC of NER beneficiaries (as per new requirement):

As it is known to all concerned that Central Transmission Utility of India Ltd (CTUIL), a subsidiary of POWERGRID, has started functioning as CTU w.e.f. 01.04.2021 as per notification dated 09.03.2021 issued by MoP, GoI and accordingly, the Billing, Collection and Disbursement of transmission charges (*for PoC billing*), a function of CTU, is being undertaken by CTUIL with effect from **01.04.2021**.

Consequent to above, separate LCs in favour of CTUIL (*for PoC Billing*) and POWERGRID (*for non-PoC billing*) in place of existing LCs, which are in favour of POWERGRID, are to be maintained by DICs in line with provisions of Regulation 19 of CERC Sharing Regulations, 2020 and to avail CTUIL rebate scheme for FY 2023-24 & 2024-25.

The status of LCs (***as per above new requirement***) of NER DICs as on **16.01.2025** is as follows: -

State/DIC	LC in favour of CTUIL (for PoC billing)	LC in favour of POWERGRID (for Non-PoC billing)
Arunachal Pradesh	Available	Available
APDCL	Available	Available
MSPDCL	Available	-
MSPCL	-	Not Available
MeECL	Available	Available
Mizoram	Available	Available
Nagaland	Available	Available
TSECL	Available	Available

STATUS OF QUARTERLY RECONCILIATION FOR Q-2 OF FY 2024-25

State/DIC	Reconciliation in favour of CTUIL (for PoC billing)	Reconciliation in favour of POWERGRID (for Non-PoC billing)
Arunachal Pradesh	Received	Received
APDCL	Received	Received
MSPDCL	Received	Received
MSPCL	-	Received
MeECL	Received	Received
Mizoram	Received	Received
Nagaland	Received	Received
TSECL	Received	Received
NEEPCO	Received	Received
NHPC	Not Received	-
NTPC	Received	-
NETC	Received	-
OTPC	Received	-

NHPC is requested to kindly arrange the signed reconciliation statement for Q-2 of FY 2024-25 to avoid the audit observations.

Sub-committee may please deliberate.

6.3 Consultancy service rendered to SEBs/TRANSCOs:

The total outstanding dues payable by NER beneficiaries to POWERGRID for providing consultancy services as on 10.01.2025 is detailed below: -

State/DIC	Outstanding dues > 1 year	Outstanding dues > 6 months	Total Outstanding dues (Cr.)	Remarks
MSPCL, Manipur	1.74	-	1.74	Annual O&M Charges FY 23-24 receivable
MSPCL,	-	1.39	1.39	Annual O&M

Manipur				<i>Charges FY 24-25 receivable</i>
MSPCL, Manipur	0.07	-	0.07	<i>Load flow study (FY14-15) receivables</i>
MePTCL, Meghalaya	0.00	0.24	0.24	<i>Annual O&M Charges FY 24-25 receivable</i>

1. The O&M Charges towards O&M of 400 KV Thoubal-Imphal Ckt -I & II (main bays & tie bays) at POWERGRID Imphal S/S, for FY 23-24 and 24-25 amounting to Rs.1,74,21,520/- and Rs.1,39,38,160/- respectively is yet to be realized from M/s MSPCL. Total amount of Rs.3,13,59,680/- remains outstanding till date for which POWERGRID is facing many queries/observations in audit.

2. O&M Charges against 220 Misa-Byrnihat Ckt-I- & II-line bays at Misa S/s for FY:2024-25 amounting to Rs.24,79,180/- is pending to be realized from M/s MePTCL for more than last 6 months.

3. Consultancy fee amounting to Rs.6,60,000/- along with service tax @12.36% of Rs.81,576/- totalling to Rs.7,41,576/- is yet to be realized from M/s MSPCL against the LOA placed on to POWERGRID by M/s MSPCL vide letter dtd- 11.04.2014 for providing services for Load flow study against the proforma invoice dtd. 16.05.2014. POWERGRID deposited advance services tax liability of Rs.81,576/- in accordance to the extant policy for submission of services tax during FY14-15.

MSPCL and MePTCL is requested to liquidate the long pending outstanding dues of POWERGRID against the consultancy services.

Sub-committee may please deliberate.

7. AGENDA ITEMS FROM OTPC

7.1 Blending of Gas at OTPC Palatana Project:

Palatana station was successfully commissioned by OTPC in 2014-15 and the plant has been running successfully serving the NE beneficiary states with very competitive priced power. The fuel supplier had also been maintaining a good supply of the fuel gas to the station despite several operational challenges.

NE region has a high reliance on gas-based generation as nearly 30% power is supplied from gas station. This is evident from CEA's Report on Energy Generation

Programme and PLF of Gas Stations, in which OTPC generated 4,575 MUs (Gross) in FY 2023-24 and exported 4,383 MUs to the beneficiary states. Given that OTPC accounts for nearly 50% of the total gas-based power generation in the Northeast (including state generation), it is essential for the Northeast region to keep the Palatana plant operating at base load.

OTPC, being the largest gas-based power station in the Northeast Region (NER), not only plays a pivotal role in meeting the region's energy demand but also contributes significantly to maintaining the overall system stability. By providing a reliable and consistent power supply, OTPC helps balance fluctuations in the grid, ensuring a stable and secure energy infrastructure for the entire region.

However, lately there has been a reduced gas supply to Palatana due to reasons beyond the control of the fuel supplier and the fuel supply has not been restored to desired level despite best efforts of the fuel supplier. Other gas stations in NE have also been experiencing deficit fuel supplies and improvement in gas supplies in near future also remains uncertain.

The situation has been persisting for a while and Palatana is operating at close to technical minimum levels. This has started affecting our cash flows and continuous low load operations shall affect our Plant and Machinery. Being a single-plant company, OTPC must secure an alternative gas supply to remain operational successfully. Therefore, OTPC has been exploring various options for sourcing alternative fuel to ensure the Palatana plant continues to operate successfully.

One potential solution is blending existing gas supply with an additional fuel source, which would enable OTPC to increase generation to the desired levels. It is anticipated that with the existing gas supply of 2.18 – 2.38 MMSCMD from existing fuel supplier, combined with blending of additional gas up to 0.3 - 0.5 MMSCMD, OTPC will be able to salvage its revenue stream while improving supply of reliable RTC power for NE beneficiaries.

Recently, GAIL has offered to supply about 0.3 MMSCMD additional gas to Palatana via the GAIL network/ ONGC Network/ Indhradhanush Gas Grid Ltd. (IGGL) which could be increased to 0.5 MMSCMD in coming future. Based on the current gas supply of 2.18-2.38 MMSCMD and the offer from GAIL to provide an additional 0.3 MMSCMD of gas, we have formulated a detailed commercial proposal for blending 0.3 MMSCMD - 0.5 MMSCMD gas at Palatana with existing

gas supplies. The proposal PPT is attached herewith for discussion and kind approval.

The proposal letter and PPT was shared with all beneficiary states in November 2024 for kind consideration and approval. OTPC officials have also visited all beneficiary states to discuss the proposal in person and have been maintaining regular communication with beneficiary states regarding the progress for the approval of the blending proposal.

The blending proposal aims to optimize Palatana's operations, ensuring its successful functioning while maximizing the availability of electricity for our beneficiary states.

In view of the above it is kindly requested to:

1. Allow Palatana to source up to 0.5 MMSCMD of alternative fuel gas for blending with the existing fuel supply, ensuring the plant operates at an optimal PAF for the benefit of the beneficiary states.
2. Allow sourcing this 0.5 MMSCMD of additional gas at a price as notified by MoPNG/PPAC as per its latest guidelines.
3. Allow sourcing of this additional gas for a minimum period of 3 years from the signing of the Gas Supply and Purchase Agreement (GSPA).

The forum is requested to discuss and pass a resolution in favour of the proposal to allow blending of gas at Palatana. NERLDC is also requested to make suitable changes in the WBES for scheduling of Palatana using blended gas.

In the 220th OCC meeting of NERPC OCC forum opined that OTPC Palatana station is crucial for supplying base load power in NE region and its successful operation at good PLFs will help all the beneficiary states to meet their energy requirements. The beneficiaries too supported the proposal. OCC forum advised OTPC to place the commercial details of the proposal in the forthcoming CC meeting.

Sub-committee may please deliberate.

7.2 Outstanding Dues of OTPC against NER beneficiaries:

The current total outstanding dues of OTPC against the NER beneficiary states are as below:

(Amount in Rs Crores)

Sl.No.	Beneficiary	Outstanding Dues (>45 Days)
1	Arunachal Pradesh	0
2	Assam	0

3	Manipur	8.11
4	Meghalaya	0
5	Mizoram	0
6	Nagaland	0
7	Tripura	31.31
	Total	39.42

The total outstanding dues beyond 45 days are Rs 39.42 Crores. Constituents are requested to clear the outstanding dues over 45 days, at the earliest.

Sub-committee may please deliberate.

7.3 Ramp Up and Ramp Down rate:

OTPC Palatana Station with an installed capacity of 726.60 MW is one of the biggest Units in NE Region. The Project is using natural Gas as fuel from small localized gas grid in Tripura which is not connected to the main land gas grid. OTPC consumes about 60% of total gas product in this gas grid.

Reduced gas supplies and large influx of solar power during the day has started impacting the schedule and Palatana is operating close to technical minimum levels. Any further reduction in schedules shall cause the station to operate in mode-changeover zones of gas turbines and consequently rise in NO_x levels beyond permissible limits by pollution control board.

The station gets its gas from isolated gas fields and gas supplies cannot be varied instantly due to remote location of gas wells. Similarly large reduction of generation as per the schedule is also not possible as it leads to gas flare up issues at the gas well site. Due to these constraints, Gas based generating stations mainly in NER cannot synchronize its generation in tune of the ramp rate demand of RLDC. This leads to huge financial impact on the Generating station causing under recovery of fuel cost due to the stringent DSM Regulations.

IEGC regulations specify a ramp rate of 3% of installed capacity which requires a huge variation in gas supplies. A ramp rate of 3% of installed capacity corresponds to 163 MW /unit/15-minute time block for one unit and 326MW/15-minute time block for Palatana station. Such a huge load variation will require a drastic variation in gas flow that will destabilize the entire Tripura gas grid. This type of situation may lead to cascade tripping of all power plants connected to the Tripura gas grid. Due to this constraint and to keep the gas grid stable, Palatana has to operate as per the variable gas supply provided by the fuel supplier and not vice versa.

Further, Palatana can only operate in combined cycle mode. The Gas Turbine is capable of fast ramp ups but the ST generation cannot follow pace at the required levels. Palatana has highlighted this issue to NERPC, NERLDC and CERC earlier too. However, no solution or relaxation has been offered.

In view of the above, it is requested that in case of ramp up and down the change in schedule for Palatana may be restricted to 1% per minute considering the isolated gas grid of NER and peculiarities of Palatana station.

The proposal is placed for deliberation and approval of the forum.

NERPC is also requested to take-up the issue with Hon'ble CERC for necessary amendment in IEGC.

Sub-committee may please deliberate.

ANY OTHER ITEMS

DATE AND VENUE OF NEXT COMMERCIAL COMMITTEE MEETING
--

As per the roaster approved in the 53rd CCM of NERPC, the next Commercial Coordination Sub-Committee meeting will be hosted by Tripura in the month of April 2025. The date and venue will be intimated separately.

Agenda Item for 27th TCC meeting of NER**Annexure B 2.23**

Item No. 1	Procurement of cold spare transformers and reactor for Northern Eastern Region (Agenda by POWERGRID)
-------------------	---

1. CERC had set up a Committee on dated 15.03.2018 consisting of representatives from CERC, NLDC, CEA & POWERGRID under the Chairmanship of the Chief (Engineering) of the CERC to assess the requirement of regional spares including bus reactors, line reactors, ICTs, etc. This would ensure reliability of the grid and reduce downtime in case of any failure/outage.
2. As per CERC Committee recommendation, the following spares transformers & reactors are required to be kept as spare for North Eastern Region as per POWERGRID assets base:

i) **Transformer:**

MVA Rating of Transformers	Voltage Rating	Total Installed unit in POWERGRID	Installed State	Spare Required as per CERC report	Available Spare (As per RPC Approved)	Qty Proposed for procurement	Location/State of spare requirement
3Ø-315MVA	400/132/33kV	1 No-Silchar	Assam, Silchar	1	0	1	Assam, Silchar
3Ø-160MVA	220/132kV	06 Nos 02-Balipara 02- Dimapur 02- Kopili	Assam-Balipara Nagaland-Dimapur Assam-Balipara	2	1(Assam- Balipara)	1	Nagaland , Dimapur
3Ø-100MVA	220/132kV	02 Nos 01 No-Dimapur 01 No- Salakati	Nagaland-Dimapur Assam-Salakati	2	1(Nagaland- Dimapur)	1	Assam, Salakati
3Ø-50MVA	132/33kV	04 Nos 02- Imphal 02- Nirjuli	Manipur- Imphal Arunachal Pradesh	2	1 (Arunachal Pradesh - Nirjuli)	1	Manipur, Imphal
	TOTAL:					4	
	Tentative Cost						43.94 Cr

Agenda Item for 27th TCC meeting of NER

Annexure B 2.23

ii) Reactors:

MVar Rating of Reactors	Voltage Rating	Total Installed unit in POWERGRID	Installed State	Spare Required as per CERC report	Available Spare (As per RPC Approved)	Qty Proposed for procurement	Location/State of spare requirement
3Ø-125MVAR#	420kV	06 Nos 01-Silchar 01-Imphal 01 – Balipara 01 – BNG 02- Mariani	Assam-Silchar Manipur-Imphal Assam-Balipara Assam-Bongaigaon Assam-Mariani	2	1(Assam-Silchar)	1	Manipur, Imphal
3Ø-63MVAR*	420 kV	22 Nos 06- Balipara 06-Bongaigaon 04-Silchar 02- Imphal 04- BNC	Assam-Balipara Assam- Bongaigaon Assam-Silchar Manipur- Imphal Assam- BNC	2	1(Assam-Balipara)	1	Manipur, Imphal
3Ø-50MVAR*	420 kV	9 Nos 02- Balipara 04- Bongaigaon 02- Silchar 01-Misa	Assam- Balipara Assam-Bongaigaon Assam-Silchar Assam-Misa	1	0	1 * proposed to be replaced with 63 MVar	Assam-Misa
3Ø-31.5MVAR	245kV	01-Mokukchung	Nagaland-Mokukchung	1	0	1	Nagaland,Mokukchung
3Ø-20MVAR	245kV	01-Mariani	Assam-Mariani	1	0	1	Assam, Mariani
3Ø-20MVAR	132kV	3		3	0	3	Manipur- Imphal

Agenda Item for 27th TCC meeting of NER

Annexure B 2.23

		01 No- Imphal 01 No- Aizwal 01 No- Kumarghat	Manipur-Imphal Mizoram-Aizwal Tripura- Kumarghat				Mizoram- Aizwal Tripura-Kumarghat
	TOTAL:					8	
	Tentative Cost						50.0 Cr

- Quantity considered for both 125MVAR & 80MVAR reactors in Manipur. In case of failure of existing 80MVAR reactor, replacement can be done with 125MVAR.

* - Quantity considered for both 50MVAR & 63MVAR reactors. In case of failure of existing 50MVAR reactor, replacement can be done with 63MVAR.

- 01 In view of the above, it is requested for approval for procurement of cold spare transformers & reactors of various ratings as per CERC committee recommendation as mentioned above. The Tariff for the investment made is to be shared by constituents as per the provisions of CERC Regulation.



ग्रिड-इंडिया
GRID-INDIA

ग्रिड कंट्रोलर ऑफ इंडिया लिमिटेड
(भारत सरकार का उद्यम)
GRID CONTROLLER OF INDIA LIMITED
(A Government of India Enterprise)



[formerly Power System Operation Corporation Limited (POSOCO)]

उत्तर पूर्वी क्षेत्रीय भार प्रेषण केन्द्र / North Eastern Regional Load Despatch Centre

कार्यालय: राष्ट्रीय भार प्रेषण केन्द्र असम के ब्रिजकट, पावर हाउस, कश्मिरीपारा, गुवाहाटी, असम- 781019

Office: Adjacent to SLDC Assam, Power House, Garwahati, Assam-781019

CIN: U40105DL2009GO1188682, Website: www.nerldc.in, Email: nerldcso1@grid-india.in

सन्दर्भ/Ref: NERLDC/MO/F&C/2024-25/7023

दिनांक/Date: 22.11.2024

सेवा में/To,

कार्यपालक अभियंता (परिवहन)/ Executive Engineer (Tr.),
डीओपी, नागालैंड /DoP, Nagaland
विद्युत मंडल, डीओपी, / Electrical Circle, DOP,
नागालैंड के गोवत, फूल नगरजन, /Govt of Nagaland, Full Nagarjan,
दिमापुर, नागालैंड, 797112/Dimapur,, Nagaland, 797112

विषय/ Sub: वित्तीय वर्ष के दौरान फीस तथा प्रभार के भुगतान में चूक के कारण वित्तीय वर्ष 2024-25 के लिए लेटर ऑफ क्रेडिट का उद्घाटन / Opening of Letter of Credit (LC) for the FY 2024-25 due to default in Payment of Fees and Charges during the FY 2023-24.

महोदय /Sir,

माननीय केंद्रीय विद्युत नियामक आयोग (CERC) ने दिनांक 01 अगस्त 2024 को "केंद्रीय विद्युत विनियामक आयोग (प्रादेशिक भार प्रेषण केन्द्र की फीस तथा प्रभार तथा अन्य सहबद्ध मामले) विनियम, 2024 है।" पर विनियम जारी किए हैं। मुख्य विनियमों का विनियम 32 निम्नलिखित है:

The Hon'ble CERC has issued regulations on "Central Electricity Regulatory Commission (Fees and Charges of Regional Load Despatch Centre and other related matters) Regulations, 2024" dated 01st August 2024. Regulation 32 of the principal Regulations is as below:

32. भुगतान सुरक्षा तंत्र का प्रावधानिकरण और इसके परिणाम:

- (1) प्रयोज्यता आरएलडीसी प्रभारों का नियमित भुगतान करेंगे। आरएलडीसी प्रभारों के भुगतान में चूक के मामले में संबंधित आरएलडीसी साधन के रूप में बिलिंग शर्त, प्रतिसंहरण और पर्याप्त पीएसएसआर बनाए रखने के लिए प्रयोज्यता को निर्देश दे सकता है।
- (2) पीएसएसआर विगत वर्ष के अधिकतम मासिक एलडीसी प्रभारों के 110 प्रतिशत के समतुल्य होगा।
- (3) पीएसएसआर के गैर-रखरखाव के मामले में आरएलडीसी इन विनियमों के विनियम 33 के अनुसार प्रयोज्यताओं को निर्बाध पहुंच विनियमित कर सकते हैं।

"32. Operationalizing the Payment Security Mechanism (PSM) and its consequences:

- (1) Users shall make regular payment of RLDC charges. In case of default in making payment of RLDC charges, the concerned RLDC may direct the user to maintain an unconditional, irrevocable, and adequate PSM in the form of a Letter of Credit.
- (2) PSM shall be equivalent to 110% of last year's maximum monthly LDC Charges.
- (3) In case of non-maintenance of PSM, RLDC may regulate open access to users as per Regulation 33 of these regulations."

वित्तीय वर्ष 2023-24 के दौरान, **डीओपी, नागालैंड** ने फीस तथा प्रभार के भुगतान में चूक की है और वित्तीय वर्ष 2024-25 के लिए खोले जाने वाली आवश्यक एलसी की राशि की गणना की गई है और इसे परिशिष्ट-1 में संलग्न किया गया है।

During the financial year 2023-24 **DoP, Nagaland** has defaulted in payment of Fees & Charges and required amount of LC to be opened for FY 2024-25 are calculated and enclosed in **Annexure-1**.

आपसे अनुरोध है कि आवश्यक कार्रवाई करें और परिशिष्ट-1 में निर्दिष्ट राशि का एलसी '**Grid Controller of India Limited, North Eastern Regional Load Despatch Centre**' के पक्ष में फीस तथा प्रभार) फीस तथा प्रभार खाता नाम : **Grid India RLDC Fees and Charges Account, IFSC:- SBIN0004688** के विरुद्ध, सीईआरसी विनियमों के अनुसार, एक महीने के भीतर खोलने की व्यवस्था करें।

You are requested to take necessary action and arrange to open LC of the amount specified in Annexure-1, in favour of '**Grid Controller of India Limited, North Eastern Regional Load Despatch Centre**', against Fees and Charges (Fees and Charges account name:- **Grid India RLDC Fees and Charges Account, IFSC:- SBIN0004688**, in line with CERC regulations within one month.

यह उल्लेखनीय है कि एलसी खोलने/संशोधन/भुनाने से संबंधित सभी शुल्क केवल चूककर्ता घटक द्वारा ही वहन किए जाएंगे।

It is pertinent to note that all charges on account of opening/amendment/encashment of LC have to be borne by the defaulting constituent only

धन्यवाद के साथ/ Thanking you.

भवदीय /Yours faithfully



(एम. एम विस्वनाथ / M. Viswanadh)

महाप्रबंधक / General Manager

उ.पू.क्षे.भा.प्रे.के / NERLDC

Annexure 1

सत्ता का नाम / Entity Name	वित्तीय वर्ष 2023-24 के दौरान देय तिथि के बाद भुगतान किए जाने की घटनाओं की संख्या/ No. of instances in which payment done after due date during FY 2023-24	2023-24 के दौरान मासिक एलडीसी शुल्क की अधिकतम राशि / Max monthly LDC Charges during 2023-24	एलसी राशि (रुपये में) सी = मैक्स मासिक एलडीसी शुल्क का 110% / LC Amount (Rs. In Rupees) = 110% of Max monthly LDC Charges
डीओपी, नागालैंड / DoP, Nagaland	1	8,66,136	9,52,750





ग्रिड-इंडिया
GRID-INDIA

ग्रिड कंट्रोलर ऑफ इंडिया लिमिटेड
(भारत सरकार का उद्यम)
GRID CONTROLLER OF INDIA LIMITED
(A Government of India Enterprise)



(formerly Power System Operation Corporation Limited (POSOCO))

उत्तर पूर्वी क्षेत्रीय भार प्रेषण केन्द्र / North Eastern Regional Load Despatch Centre

कार्यालय: राज्यिक भार प्रेषण केन्द्र असम के निक्कट, पावर हाउस, कन्हिलीपारा, गुवाहाटी, असम- 781019

Office: Adjacent to SLDC Assam, Power House, Guwahati, Assam- 781019

CIN: U40105DL2009GOI188682, Website: www.nerlde.in, Email: nerlde@grid-india.in

सन्दर्भ/Ref: NERLDC/MO/F&C/7161

दिनांक/Date: 24.12.2024

सेवा में/To,

कार्यकारी अभियंता (परिवहन)/Executive Engineer (Tr.),

डीओपी नागालैंड/ DoP Nagaland

विद्युत मंडल, डीओपी/Electrical Circle, DoP,

गवर्नमेंट ऑफ नागालैंड, फुल नगरजन/Government of Nagaland, Full Nagarjan,

दीमापुर, नागालैंड, 797112/Dimapur, Nagaland, 797112

विषय/Sub: वित्तीय वर्ष 2023-24 के दौरान फीस और प्रभार के भुगतान में चूक के कारण 2024-25 के लिए लेटर ऑफ क्रेडिट (LC) जारी करने हेतु अनुस्मारक/ Reminder for Opening of Letter of Credit(LC) for 2024-25 due to default of payment of Fees & Charges during FY-2023-24

सन्दर्भ/Reference : NERLDC/MO/F&C/2024-25/7023 dated 22.11.2024

महोदय / Sir,

यह 22.11.2024 को हमारे द्वारा भेजी गई पूर्व संचार के संदर्भ में एक विनम्र अनुस्मारक है, जिसमें फीस और प्रभार के खिलाफ ग्रिड कंट्रोलर ऑफ इंडिया लिमिटेड, नॉर्थ ईस्टर्न लोड डिस्पैच सेंटर के पक्ष में लेटर ऑफ क्रेडिट (LC) खोलने का विषय था।

हम आपकी कृपापूर्वक निवेदन करते हैं कि आप इस मामले में आवश्यक कार्रवाई को शीघ्रता से पूरा करें। इस मामले पर आपका तत्काल ध्यान हमारी बहुत सराहना की जाएगी।

This is a gentle reminder in reference to our earlier communication dated 22.11.2024 on the subject matter, for opening of LC in favour of 'Grid Controller of India Limited, North Eastern Load Despatch Centre', against Fees and Charges.

We would greatly appreciate it if you could kindly expedite the necessary action at your earliest convenience. Your prompt attention to this matter would be highly valued.

धन्यवाद के साथ/ Thanking you.

भवदीय /Yours faithfully

(एम. एम विस्वनाथ / M. Viswanadh)

महाप्रबंधक / General Manager

उ.पू.क्षे.भा.प्रे.के / NERLDC



ग्रिड-इंडिया
GRID-INDIA

ग्रिड कंट्रोलर ऑफ इंडिया लिमिटेड
(भारत सरकार का उद्यम)
GRID CONTROLLER OF INDIA LIMITED
(A Government of India Enterprise)



[formerly Power System Operation Corporation Limited (POSOCO)]

उत्तर पूर्वी क्षेत्रीय भार प्रेषण केन्द्र / North Eastern Regional Load Despatch Centre

कार्यालय: राज्मिक भार प्रेषण केन्द्र असम के न्हिकट, पावर हाउस, कइहलीपारा, गुवाहाटी, असम- 781019

Office: Adjacent to SLDC Assam, Power House, Garwahati, Assam-781019

CIN: U40105DL2009GO1188682, Website: www.nerldc.in, Email: nerldcmail@grid-india.in

सन्दर्भ/Ref: NERLDC/MO/F&C/2024-25/ 7029

दिनांक/Date: 22.11.2024

सेवा में/To,

इंजीनियर-इन-चीफ/ Engineer-In-Chief,
पी एंड ई विभाग P & E Dept., Mizoram
पावर एंड इलेक्ट्रिसिटी विभाग/ Power & Electricity Department,
न्यू कैपिटल कॉम्प्लेक्स, आइजोल / New Capital Complex, Aizawl,
मिजोरम - 796001/ Mizoram-796001

विषय/ Sub: वित्तीय वर्ष के दौरान फीस तथा प्रभार के भुगतान में चूक के कारण वित्तीय वर्ष 2024-25 के लिए लेटर ऑफ क्रेडिट का उद्घाटन / Opening of Letter of Credit (LC) for the FY 2024-25 due to default in Payment of Fees and Charges during the FY 2023-24.

महोदय /Sir,

माननीय केंद्रीय विद्युत नियामक आयोग (CERC) ने दिनांक 01 अगस्त 2024 को "केंद्रीय विद्युत विनियामक आयोग (प्रादेशिक भार प्रेषण केन्द्र की फीस तथा प्रभार तथा अन्य सहबद्ध मामले) विनियम, 2024 है।" पर विनियम जारी किए हैं। मुख्य विनियमों का विनियम 32 निम्नलिखित है:

The Hon'ble CERC has issued regulations on "Central Electricity Regulatory Commission (Fees and Charges of Regional Load Despatch Centre and other related matters) Regulations, 2024" dated 01st August 2024. Regulation 32 of the principal Regulations is as below:

32. भुगतान सुरक्षा तंत्र का प्रावधानिकरण और इसके परिणाम:

- (1) प्रयोजक्ता आरएलडीसी प्रभारों का नियमित भुगतान करेंगे। आरएलडीसी प्रभारों के भुगतान में चूक के मामले में संबंधित आरएलडीसी साधन के रूप में बिलिंग शर्त, प्रतिसंहरण और पर्याप्त पीएसएसआर बनाए रखने के लिए प्रयोजक को निर्देश दे सकता है।
- (2) पीएसएसआर विगत वर्ष के अधिकतम मासिक एलडीसी प्रभारों के 110 प्रतिशत के समतुल्य होगा।
- (3) पीएसएसआर के गैर-रखरखाव के मामले में आरएलडीसी इन विनियमों के विनियम 33 के अनुसार प्रयोजक्ताओं को निर्बाध पहुंच विनियमित कर सकते हैं।

"32. Operationalizing the Payment Security Mechanism (PSM) and its consequences:

- (1) Users shall make regular payment of RLDC charges. In case of default in making payment of RLDC charges, the concerned RLDC may direct the user to maintain an unconditional, irrevocable, and adequate PSM in the form of a Letter of Credit.
- (2) PSM shall be equivalent to 110% of last year's maximum monthly LDC Charges.
- (3) In case of non-maintenance of PSM, RLDC may regulate open access to users as per Regulation 33 of these regulations."

वित्तीय वर्ष 2023-24 के दौरान, पी एंड ई विभाग, मिजोरम ने फीस तथा प्रभार के भुगतान में चूक की है और वित्तीय वर्ष 2024-25 के लिए खोले जाने वाली आवश्यक एलसी की राशि की गणना की गई है और इसे परिशिष्ट-1 में संलग्न किया गया है।

During the financial year 2023-24, **P&E Dept., MIZORAM** has defaulted in payment of Fees & charges and required amount of LC to be opened for FY 2024-25 are calculated and enclosed in **Annexure-1**.

आपसे अनुरोध है कि आवश्यक कार्रवाई करें और परिशिष्ट-1 में निर्दिष्ट राशि का एलसी '**Grid Controller of India Limited, North Eastern Regional Load Despatch Centre**' के पक्ष में फीस तथा प्रभार) फीस तथा प्रभार खाता नाम : **Grid India RLDC Fees and Charges Account, IFSC:- SBIN0004688** के विरुद्ध, सीईआरसी विनियमों के अनुसार, एक महीने के भीतर खोलने की व्यवस्था करें।

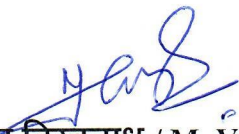
You are requested to take necessary action and arrange to open LC of the amount specified in Annexure-1, in favour of '**Grid Controller of India Limited, North Eastern Regional Load Despatch Centre**', against Fees and Charges (Fees and Charges account name:- **Grid India RLDC Fees and Charges Account, IFSC:- SBIN0004688**, in line with CERC regulations within one month.

यह उल्लेखनीय है कि एलसी खोलने/संशोधन/भुनाने से संबंधित सभी शुल्क केवल चूककर्ता घटक द्वारा ही वहन किए जाएंगे।

It is pertinent to note that all charges on account of opening/amendment/encashment of LC have to be borne by the defaulting constituent only

धन्यवाद के साथ/ Thanking you.

भवदीय /Yours faithfully


(एम. एम विस्वनाथ / M. Viswanadh)
महाप्रबंधक / General Manager
उ.पू.क्षे.भा.प्रे.के / NERLDC

सत्ता का नाम / Entity Name	वित्तीय वर्ष 2023-24 के दौरान देय तिथि के बाद भुगतान किए जाने की घटनाओं की संख्या/ No. of instances in which payment done after due date during FY 2023-24	2023-24 के दौरान मासिक एलडीसी शुल्क की अधिकतम राशि / Max monthly LDC Charges during 2023-24	एलसी राशि (रुपये में) सी = मैक्स मासिक एलडीसी शुल्क का 110% / LC Amount (Rs. In Rupees) = 110% of Max monthly LDC Charges
पी और ई विभाग, मिजोरम / P&E Dept., Mizoram	9	6,93,266	7,62,593





ग्रिड-इंडिया
GRID-INDIA

ग्रिड कंट्रोलर ऑफ इंडिया लिमिटेड
(भारत सरकार का उद्यम)
GRID CONTROLLER OF INDIA LIMITED
(A Government of India Enterprise)



[formerly Power System Operation Corporation Limited (POSOCO)]

उत्तर पूर्वी क्षेत्रीय भार प्रेषण केन्द्र / North Eastern Regional Load Despatch Centre

कार्यालय: राष्ट्रीय भार प्रेषण केन्द्र असम के बिल्डिंग, पावर हाउस, कश्मिलीपाड़ा, गुवाहाटी, असम-781019

Office: Adjacent to SLDC Assam, Power House, Garwahati, Assam-781019

CIN: U40105DL2009GO1188682, Website: www.nerlde.in, Email: nerlde@grid-india.in

सन्दर्भ/Ref: NERLDC/MO/F&C/7160

दिनांक/Date: 24.12.2024

सेवा में/To ,

इंजीनियर-इन-चीफ/Engineer-In-Chief,

पी एंड ई विभाग, मिजोरम/P & E Dept., Mizoram

बिजली एवं बिजली विभाग /Power and Electricity Department,

न्यू कैपिटल कॉम्प्लेक्स, ऐज़वोल/New Capital Complex , Aizawl,

मिजोरम – 796001/Mizoram-796001

विषय/Sub: वित्तीय वर्ष 2023-24 के दौरान फीस और प्रभार के भुगतान में चूक के कारण 2024-25 के लिए लेटर ऑफ़ क्रेडिट (LC) जारी करने हेतु अनुस्मारक/ Reminder for Opening of Letter of Credit(LC) for 2024-25 due to default of payment of Fees & Charges during FY-2023-24

सन्दर्भ/Reference : NERLDC/MO/F&C/2024-25/7029 dated 22.11.2024

महोदय / Sir,

यह 22.11.2024 को हमारे द्वारा भेजी गई पूर्व संचार के संदर्भ में एक विनम्र अनुस्मारक है, जिसमें फीस और प्रभार के खिलाफ ग्रिड कंट्रोलर ऑफ इंडिया लिमिटेड, नॉर्थ ईस्टर्न लोड डिस्पैच सेंटर के पक्ष में लेटर ऑफ़ क्रेडिट (LC) खोलने का विषय था।

हम आपकी कृपापूर्वक निवेदन करते हैं कि आप इस मामले में आवश्यक कार्रवाई को शीघ्रता से पूरा करें। इस मामले पर आपका तत्काल ध्यान हमारी बहुत सराहना की जाएगी।

This is a gentle reminder in reference to our earlier communication dated 22.11.2024 on the subject matter, for opening of LC in favour of 'Grid Controller of India Limited, North Eastern Load Despatch Centre', against Fees and Charges.

We would greatly appreciate it if you could kindly expedite the necessary action at your earliest convenience. Your prompt attention to this matter would be highly valued.

धन्यवाद के साथ/ Thanking you.

भवदीय /Yours faithfully

(Signature)

(एम. एम विस्वनाथ / M. Viswanadh)

महाप्रबंधक / General Manager

उ.पू.क्षे.भा.प्रे.के / NERLDC



ग्रिड-इंडिया
GRID-INDIA

ग्रिड कंट्रोलर ऑफ इंडिया लिमिटेड
(भारत सरकार का उद्यम)
GRID CONTROLLER OF INDIA LIMITED
(A Government of India Enterprise)



[formerly Power System Operation Corporation Limited (POSOCO)]

उत्तर पूर्वी क्षेत्रीय भार प्रेषण केन्द्र / North Eastern Regional Load Despatch Centre

कार्यालय: राज्याधिक भार प्रेषण केन्द्र असम के निकट, पावर हाउस, काइलीपारा, गुवाहाटी, असम- 781019

Office: Adjacent to SLDC Assam, Power House, Gauwahati, Assam-781019

CIN: U40105DL2009GOI188682, Website: www.nerlde.in, Email: nerlde@grid-india.in

सन्दर्भ/Ref: NERLDC/MO/F&C/2024-25/ 7028

दिनांक/Date: 22.11.2024

सेवा में/To,

प्रबंध निदेशक/ The Managing Director,
मणिपुर राज्य विद्युत वितरण कंपनी लिमिटेड / Manipur State Power Distribution Company Limited,
तीसरी मंजिल, नई निदेशक भवन/ 3rd Floor, New Directorate Building,
दूसरे एम.आर. गेट के पास, इम्फाल-दीमापुर रोड/ Near 2nd M. R. Gate, Imphal-Dimapur Road,
इम्फाल, 795001, मणिपुर/ Imphal, 795001, Manipur.

विषय/ Sub: वित्तीय वर्ष के दौरान फीस तथा प्रभार के भुगतान में चूक के कारण वित्तीय वर्ष 2024-25 के लिए लेटर ऑफ क्रेडिट का उद्घाटन / Opening of Letter of Credit (LC) for the FY 2024-25 due to default in Payment of Fees and Charges during the FY 2023-24.

महोदय /Sir,

माननीय केंद्रीय विद्युत नियामक आयोग (CERC) ने दिनांक 01 अगस्त 2024 को "केंद्रीय विद्युत विनियामक आयोग (प्रादेशिक भार प्रेषण केंद्र की फीस तथा प्रभार तथा अन्य सहबद्ध मामले) विनियम, 2024 है।" पर विनियम जारी किए हैं। मुख्य विनियमों का विनियम 32 निम्नलिखित है:

The Hon'ble CERC has issued regulations on "Central Electricity Regulatory Commission (Fees and Charges of Regional Load Despatch Centre and other related matters) Regulations, 2024" dated 01st August 2024. Regulation 32 of the principal Regulations is as below:

32. भुगतान सुरक्षा तंत्र का प्रावधानिकरण और इसके परिणाम:

- (1) प्रयोज्यता आरएलडीसी प्रभारों का नियमित भुगतान करेंगे। आरएलडीसी प्रभारों के भुगतान में चूक के मामले में संबंधित आरएलडीसी साधन के रूप में बिलिंग शर्त, प्रतिसंहरण और पर्याप्त पीएसएसआर बनाए रखने के लिए प्रयोज्यता को निर्देश दे सकता है।
- (2) पीएसएसआर विगत वर्ष के अधिकतम मासिक एलडीसी प्रभारों के 110 प्रतिशत के समतुल्य होगा।
- (3) पीएसएसआर के गैर-रखरखाव के मामले में आरएलडीसी इन विनियमों के विनियम 33 के अनुसार प्रयोज्यताओं को निर्बाध पहुंच विनियमित कर सकते हैं।

"32. Operationalizing the Payment Security Mechanism (PSM) and its consequences:

- (1) Users shall make regular payment of RLDC charges. In case of default in making payment of RLDC charges, the concerned RLDC may direct the user to maintain an unconditional, irrevocable, and adequate PSM in the form of a Letter of Credit.
- (2) PSM shall be equivalent to 110% of last year's maximum monthly LDC Charges.
- (3) In case of non-maintenance of PSM, RLDC may regulate open access to users as per Regulation 33 of these regulations."

वित्तीय वर्ष 2023-24 के दौरान, एमएसपीडीसीएल ने फीस तथा प्रभार के भुगतान में चूक की है और वित्तीय वर्ष 2024-25 के लिए खोले जाने वाली आवश्यक एलसी की राशि की गणना की गई है और इसे परिशिष्ट-1 में संलग्न किया गया है।

During the financial year 2023-24, MSPDCL has defaulted in payment of Fees & charges and required amount of LC to be opened for FY 2024-25 are calculated and enclosed in **Annexure-1**.

आपसे अनुरोध है कि आवश्यक कार्रवाई करें और परिशिष्ट-1 में निर्दिष्ट राशि का एलसी **Grid Controller of India Limited, North Eastern Regional Load Despatch Centre** के पक्ष में शुल्क और चार्जस) फीस तथा फीस तथा प्रभार खाता नाम **Grid India RLDC Fees and Charges Account**, IFSC: SBIN0004688) के विरुद्ध, सीईआरसी विनियमों के अनुसार, एक महीने के भीतर खोलने की व्यवस्था करें।

You are requested to take necessary action and arrange to open LC of the amount specified in Annexure-1, in favour of '**Grid Controller of India Limited, North Eastern Regional Load Despatch Centre**' against Fees and Charges (Fees and Charges account name:- **Grid India RLDC Fees and Charges Account**, IFSC:- **SBIN0004688**, in line with CERC regulations within one month.

यह उल्लेखनीय है कि एलसी खोलने/संशोधन/भुनाने से संबंधित सभी शुल्क केवल चूककर्ता घटक द्वारा ही वहन किए जाएंगे।

It is pertinent to note that all charges on account of opening/amendment/encashment of LC have to be borne by the defaulting constituent only

धन्यवाद के साथ/ Thanking you.

भवदीय /Yours faithfully




(एम. एम विस्वनाथ / M. Viswanadh)

महाप्रबंधक / General Manager

उ.पू.क्षे.भा.प्रे.कें / NERLDC

सत्ता का नाम / Entity Name	वित्तीय वर्ष 2023-24 के दौरान देय तिथि के बाद भुगतान किए जाने की घटनाओं की संख्या/ No. of instances in which payment done after due date during FY 2023-24	2023-24 के दौरान मासिक एलडीसी शुल्क की अधिकतम राशि / Max monthly LDC Charges during 2023-24	एलसी राशि (रुपये में) सी = मैक्स मासिक एलडीसी शुल्क का 110% / LC Amount (Rs. In Rupees) = 110% of Max monthly LDC Charges
एमएसपीडीसीएल / MSPDCL	8	10,40,727	11,44,800





ग्रिड-इंडिया
GRID-INDIA

ग्रिड कंट्रोलर ऑफ इंडिया लिमिटेड
(भारत सरकार का उद्यम)
GRID CONTROLLER OF INDIA LIMITED
(A Government of India Enterprise)



[formerly Power System Operation Corporation Limited (POSOCO)]

उत्तर पूर्वी क्षेत्रीय भार प्रेषण केन्द्र / North Eastern Regional Load Despatch Centre

कार्यालय: राष्ट्रीय भार प्रेषण केन्द्र असम के निकट, पावर हाउस, कबहिलीपारा, गुवाहाटी, असम- 781019

Office: Adjacent to SLDC Assam, Power House, Gauwahati, Assam-781019

CIN: U40105DL2009GOI188682, Website: www.nerldc.in, Email: nerldc@grid-india.in

सन्दर्भ/Ref: NERLDC/MO/F&C/7159

दिनांक/Date: 24.12.2024

सेवा में/To,

प्रबंध निदेशक/ The Managing Director,

मणिपुर राज्य विद्युत वितरण कंपनी लिमिटेड / Manipur State Power Distribution Company Limited,

तीसरी मंजिल, नई निदेशक भवन/ 3rd Floor, New Directorate Building,

दूसरे एम.आर. गेट के पास, इम्फाल-दीमापुर रोड/ Near 2nd M. R. Gate, Imphal-Dimapur Road,

इम्फाल, 795001, मणिपुर/ Imphal, 795001, Manipur.

विषय/Sub: वित्तीय वर्ष 2023-24 के दौरान फीस और प्रभार के भुगतान में चूक के कारण 2024-25 के लिए लेटर ऑफ क्रेडिट (LC) जारी करने हेतु अनुस्मारक/ Reminder for Opening of Letter of Credit(LC) for 2024-25 due to default of payment of Fees & Charges during FY-2023-24

सन्दर्भ/Reference : NERLDC/MO/F&C/2024-25/7028 dated 22.11.2024

महोदय / Sir,

यह 22.11.2024 को हमारे द्वारा भेजी गई पूर्व संचार के संदर्भ में एक विनम्र अनुस्मारक है, जिसमें फीस और प्रभार के खिलाफ ग्रिड कंट्रोलर ऑफ इंडिया लिमिटेड, नॉर्थ ईस्टर्न लोड डिस्पैच सेंटर के पक्ष में लेटर ऑफ क्रेडिट (LC) खोलने का विषय था।

हम आपकी कृपापूर्वक निवेदन करते हैं कि आप इस मामले में आवश्यक कार्रवाई को शीघ्रता से पूरा करें। इस मामले पर आपका तत्काल ध्यान हमारी बहुत सराहना की जाएगी।

This is a gentle reminder in reference to our earlier communication dated 22.11.2024 on the subject matter, for opening of LC in favour of 'Grid Controller of India Limited, North Eastern Load Despatch Centre', against Fees and Charges.

We would greatly appreciate it if you could kindly expedite the necessary action at your earliest convenience. Your prompt attention to this matter would be highly valued.

धन्यवाद के साथ/ Thanking you.

भवदीय /Yours faithfully

(एम. एम विस्वनाथ / M. Viswanadh)

महाप्रबंधक / General Manager
उ.पू.क्षे.भा.प्रे.के / NERLDC



सत्यमेव जयते

भारत सरकार
Government of India
विद्युत मंत्रालय
Ministry of Power
केन्द्रीय विद्युत प्राधिकरण
Central Electricity Authority
विद्युत प्रणाली संचार विकास प्रभाग
Power System Communication Development Division

विषय:	Charging of Electric Supply lines without having obtained PTCC approval
--------------	---

S. No	Reference No.	Dated
(i)	CEA Letter No: CEA/PCD/10CLPTCC/72	18.01.2019

Vide CEA letter referred at S. No. (i) (copy enclosed), request was made to NLDC for issuance of necessary directions to respective RLDCs for seeking documentary evidence of PTCC clearance from concerned utilities before issuing charging code/ permission.

In the recently held 112th CLPTCC Meeting, BSNL highlighted that some State Transmission Utilities (STUs) are getting their transmission lines charged without verifying the status of PTCC approval and for few of these cases are applying for post-facto PTCC approval. Such a situation wherein charging of transmission lines has been allowed without verifying the impact on nearby communication assets of BSNL, Railway and Defense may pose serious hazard for the personnel working and telecom equipment installed in nearby communication assets.

In this regard, attention is drawn towards amended "Central Electricity Authority (Measures relating to Safety and Electric Supply) Regulations, 2023" wherein Section- 80 specifies as follows:

"Protection against electromagnetic interference. – The owner of every electric supply line of voltage level 11 kV or above shall obtain the clearance of Power Telecommunication Co-ordination Committee to ensure the safety of the personnel and telecommunication line as per the requirement of section 160 of the Act."

Though PTCC approval is mandatory for charging of Transmission Lines as per Electricity Act 2003 and CEA Safety Regulations 2023, it has been brought to our notice that some Utilities are getting their lines charged without getting necessary PTCC approvals.

Thus, it is advised that necessary directions shall be issued to concerned officials for allowing charging of *electric supply line of voltage level 11 kV or above* after due diligence pertaining to PTCC approval. Also for electric supply lines which have already been charged without having obtained PTCC approvals shall be regularized at the earliest for compliance with provisions of Electricity Act 2003 and CEA Safety Regulations 2023.

Encl: A/a

Signed by Suman Kumar
Maharana
Date: 17-10-2024 12:25:00

Chief Engineer

To,

1. National Load Despatch Centre
2. Northern Regional Load Despatch Centre
3. Western Regional Load Despatch Centre
4. Southern Regional Load Despatch Centre
5. Eastern Regional Load Despatch Centre
6. North Eastern Regional Load Despatch Centre
7. Andhra Pradesh State Load Dispatch Center
8. Assam State Load Dispatch Center
9. Bihar State Load Dispatch Center
10. Chhattisgarh State Load Dispatch Center
11. Delhi State Load Dispatch Center
12. Gujarat State Load Dispatch Center
13. Haryana State Load Dispatch Center
14. Himachal Pradesh State Load Dispatch Center
15. Jharkhand State Electricity Board
16. Karnataka State Load Dispatch Center
17. Kerala State Load Dispatch Center
18. Madhya Pradesh State Load Dispatch Center
19. Meghalaya State Load Dispatch Center
20. Mizoram State Load Dispatch Center
21. Odisha State Load Dispatch Center
22. Punjab State Load Dispatch Center
23. Rajasthan State Load Dispatch Center
24. Sikkim State Load Dispatch Center
25. Tamil Nadu State Load Dispatch Center
26. Telangana State Load Dispatch Center
27. Tripura State Load Dispatch Center
28. Uttar Pradesh State Load Dispatch Center
29. Uttarakhand State Load Dispatch Center
30. West Bengal State Load Dispatch Center
31. CGM, QA&I, BSNL (For information)



Annexure-1

भारत सरकार
Government of India
विद्युत मंत्रालय
Ministry of Power
केन्द्रीय विद्युत प्राधिकरण
Central Electricity Authority
पावर कम्युनिकेशन डेवलपमेंट प्रभाग
Power Communication Development Division

No. CEA/PCD/10CLPTCC/72

Date: 18/01/2019

ED, NLDC, POSOCO,
B-9, Qutub Institutional Area,
Katwaria Sarai,
New Delhi – 110 016

Subject: PTCC Clearance mandatory before charging Transmission Line

Sir,

Section 77 of CEA (Measures relating to Safety and Electric Supply) Regulations, 2010 relates to protection against electromagnetic interference. It has derived strength from Section 160(1) of the Act which provides protection to telephonic and signaling communication.

Section-77

"The owner of every overhead power line of voltage level 11kV or higher shall submit proposal for obtaining Power Telecommunication Co-ordination Committee (PTCC) clearance to ensure safety of the personnel and telecom Equipment"

Regarding PTCC, it is to inform that PTCC (Power and Telecommunication Coordination Committee) is a Standing Committee having stakeholders – Power Utilities, BSNL, Railways and Defense. PTCC is for coexistence of Power and Telecom sectors by ensuring safety of human lives and telecommunication equipment from hazardous induction effects due to power line under fault conditions. PTCC clearance is issued after taking care of protection of affected telecom circuits.

Though PTCC clearance is mandatory but some power lines are charged without PTCC. RLDCs can check such action by denying the charging code. Therefore, it is requested that NLDC may issue instructions that RLDCs may ask for documentary evidence of PTCC clearance from the concerned transmission licensee in their respective Region, before issuing charging code/permission.

Yours faithfully,

(Signature)
(Naresh Bhandari)
Chief Engineer

एन आर पी सी परिसर, कटवारिया सराय, नई दिल्ली-110016 टेलीफैक्स: 011-26565214 ईमेल: nbnareshbhandari@nic.in
NRPC Complex, Katwaria Sarai, New Delhi-110016 Telefax: 011-26565214 Email: nbnareshbhandari@nic.in

नसीका / POSOCO
नवी दिल्ली-110016

24 JAN 2019

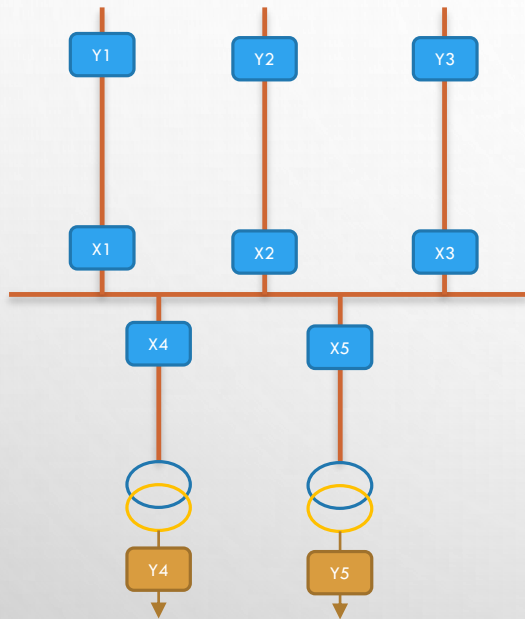
METERING PHILOSOPHY IN NER

1. ACCOUNTING OF STATES
2. ACCOUNTING OF GENERATORS



ENERGY ACCOUNTING OF STATES

CASE 1: ISTS SUBSTATION WITH TRANSFORMERS USED FOR DRAWAL BY STATE



Primary Drawal Data:

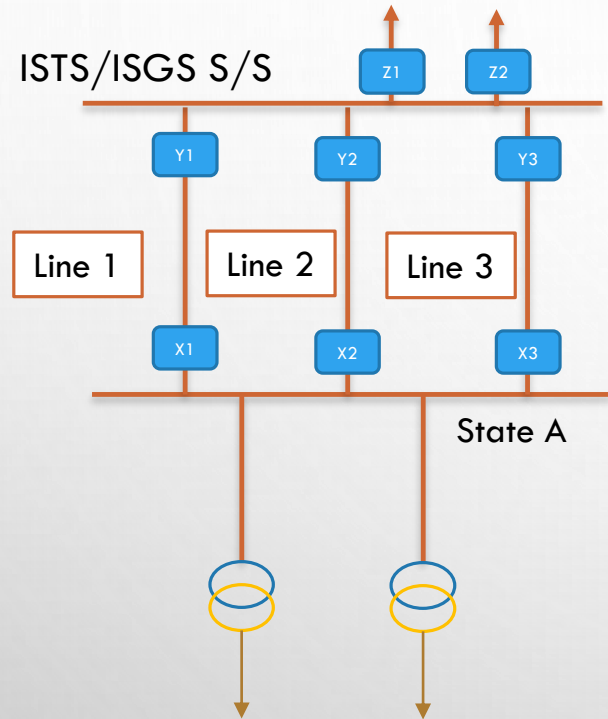
1. X4+X5

In Absence of Main Meter Data :

1. Y4, Y5
2. Net Bus
3. SCADA/PMU Data

X1,X2,X3,X4,X5: Meters installed at ISTS SS
Y1,Y2,Y3,Y4,Y5: Meters installed at other end

CASE 2: STATE OWNED SUBSTATION WITH ISTS LINES



X1,X2,X3: Meters installed at State owned SS
Y1,Y2,Y3: Meters installed at other end
Z1,Z2: Meters installed at ISTS/ISGS S/S for other Elements connected to the Bus

Primary Drawal Data:

1. -X1-X2-X3

In Absence of Main Meter Data :

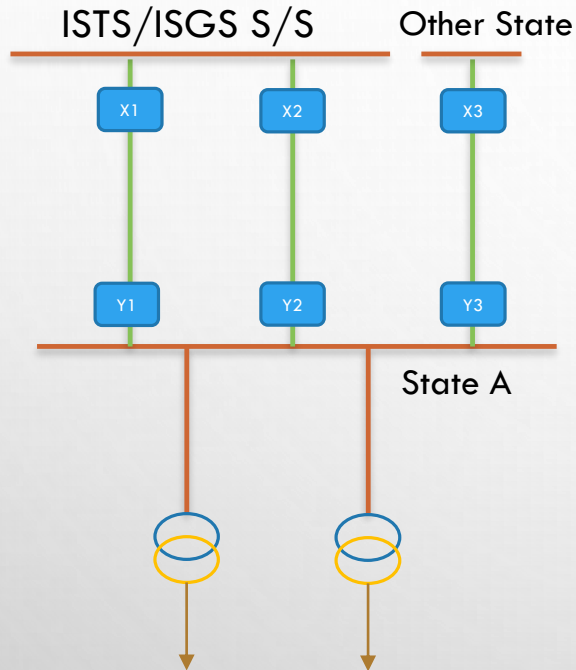
1. Y1, Y2, Y3

In absence of Meter data of both X and Y series meter of any one element (say Line 1), following step is taken to calculate drawal of that line:

$$Y1 = -(Z1 + Z2 + Y2 + Y3)$$

In the absence of all meter data, SCADA/PMU data available will be used

CASE 3: STATE OWNED SUBSTATION WITH STU OWNED LINES



Primary Drawal Data (State A):

1. $X1 + X2 - Y3$

In Absence of Main Meter Data (State A):

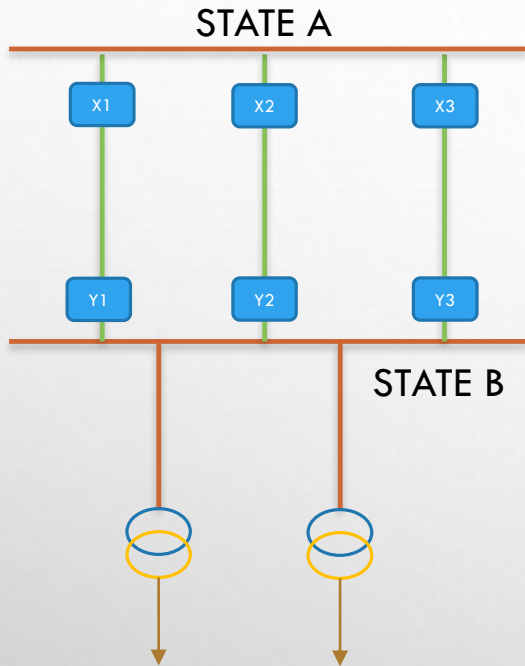
1. $-Y1, -Y2, X3$

2. SCADA/PMU data

X1,X2,X3: Meters installed at other end

Y1,Y2,Y3: Meters installed at state owned SS

CASE 4: FEEDERS BETWEEN TWO STATES



X1,X2,X3: Meters installed at STATE A end
Y1,Y2,Y3: Meters installed at STATE B end

Primary Drawal Data (STATE A):

1. -X1-X2-X3

In Absence of Main Meter Data (STATE A):

1. Y1, Y2, Y3

Primary Drawal Data (STATE B):

1. -Y1-Y2-Y3

In Absence of Main Meter Data (STATE B):

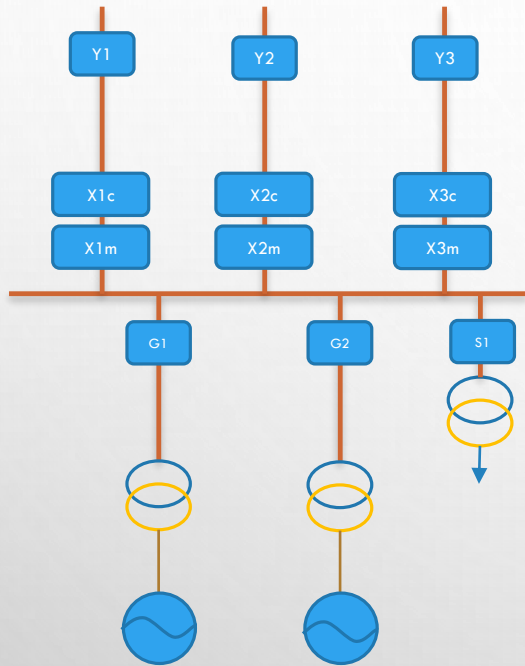
1. X1, X2, X3

In the absence of meter data of both ends for any element, SCADA/PMU data available will be used



ENERGY ACCOUNTING OF ISGS

CASE 1: ISGS SUBSTATION (ALL UNITS UNDER COMMERCIAL OPERATION)



Primary Injection Data:

1. $X1m + X2m + X3m$

In Absence of Main Meter Data:

1. $X1c, X2c, X3c$
2. Net Bus
3. $-Y1, -Y2, -Y3$
4. SCADA/PMU Data

$X1m, X2m, X3m$: Main Meters installed at ISGS SS

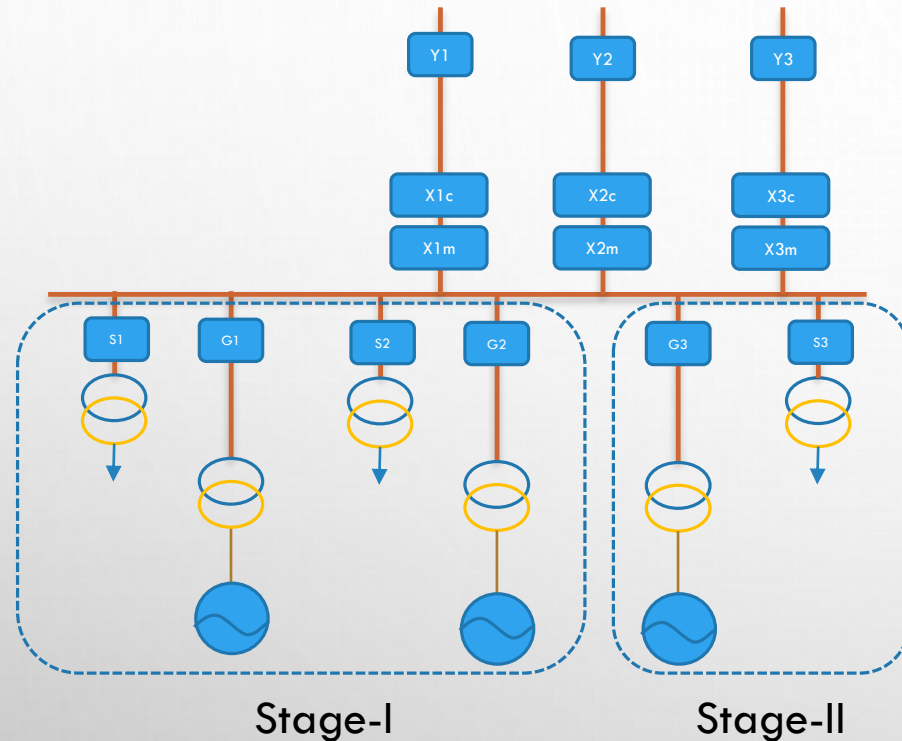
$X1c, X2c, X3c$: Check Meters installed at ISGS SS

$Y1, Y2, Y3$: Meters installed at other end

$G1, G2$: Meters installed on HV side of GT

$S1$: Meter installed HV side of ST

CASE 2: TWO STAGE ISGS CONNECTED AT SAME BUS (ALL UNITS UNDER COMMERCIAL OPERATION)



X1m,X2m,X3m: Main Meters installed at ISGS SS
X1c, X2c, X3c: Check Meters installed at ISGS SS
Y1,Y2,Y3: Meters installed at other end
G1,G2,G3: Meters installed on HV side of GT
S1,S2,S3: Meter installed HV side of ST

Total Injection :

1. $X1m + X2m + X3m \rightarrow (Z)$

Injection for Stage-II:

1. $G3 + S3$

Injection for Stage-I:

1. $Z - (G3 + S3)$

In Absence of Main Meter Data:

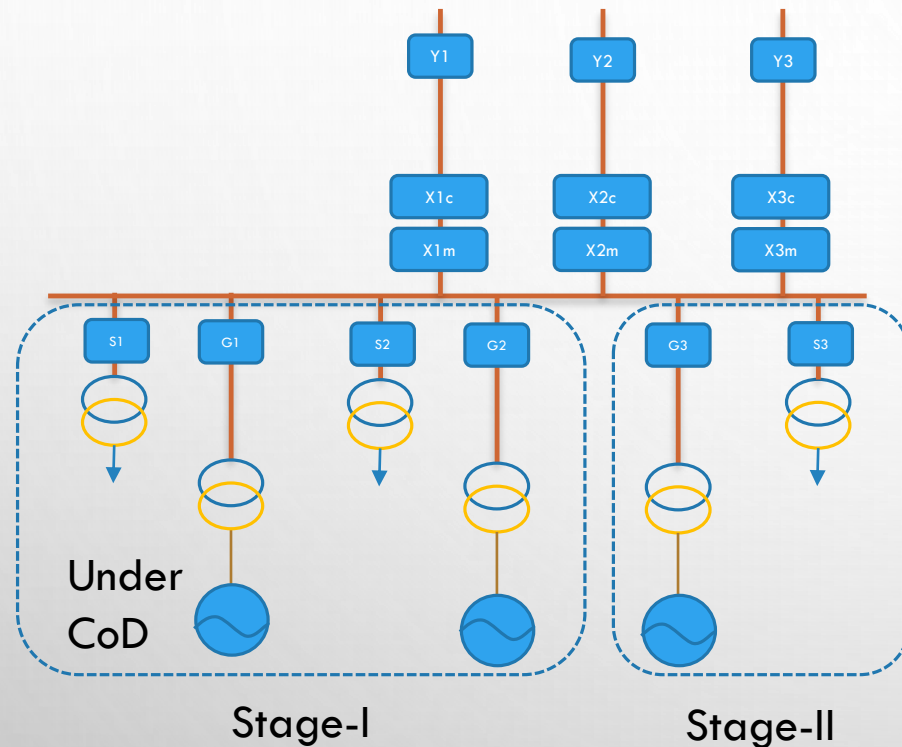
For Total Injection:

1. $X1c, X2c, X3c$
2. $-Y1, -Y2, -Y3$

For Stage II:

1. Net Bus
2. SCADA/PMU data

CASE 3: TWO STAGE ISGS CONNECTED AT SAME BUS (ALL UNITS **NOT** UNDER COMMERCIAL OPERATION)



X1m,X2m,X3m: Main Meters installed at ISGS SS
 X1c, X2c, X3c: Check Meters installed at ISGS SS
 Y1,Y2,Y3: Meters installed at other end
 G1,G2,G3: Meters installed on HV side of GT
 S1,S2,S3: Meter installed HV side of ST

Total Injection :

$$1. X1m+X2m+X3m----->(Z)$$

Injection for Stage-II:

$$1. G3+S3$$

Injection for Stage-I Unit not under CoD:

$$1. G2+S2$$

Injection for Stage-I Unit under CoD:

$$1. Z-(G2+S2+G3+S3)$$

In Absence of Main Meter Data:

For Total Injection:

1. X1c, X2c, X3c
2. -Y1, -Y2, -Y3

For Stage-I or II:

1. Net Bus
2. SCADA/PMU Data