



भारत सरकार Government of India

शक्ति विभाग Ministry of Power

उत्तर-पूर्व क्षेत्रीय शक्ति आयोग

North Eastern Regional Power Committee

मेघालय राज्य आवास वित्त सहकारी समाज लि. भवन

Meghalaya State Housing Finance Co-Operative Society Ltd. Building

नंग्रिम हिल्स, शिल्लोंग - 793003

Nongrim Hills, Shillong - 793003.

SPEED POST/FAX

Ph : 0364-2520034

Fax: 0364-2520030

email: msnerpc@dataone.in

website: www.nerpc.nic.in

No.: NERPC/COM/CC_Min/2011/3029-65

Dated: 7th September 2011

To

1. Member (Tech), Assam State Electricity Board, Bijuli Bhawan, Paltan Bazar, Guwahati-781 001
2. Member (Tech), MeSEB, Lumjingshai, Short Round Road, Shillong - 793 001
3. Engineer-in-Chief (P&E), Department of Power, Govt. of Mizoram, Khatla, Aizawl - 796 001
4. Chief Engineer (WE Zone), Department of Power, Govt. of Arunachal Pradesh, Itanagar- 791 111
5. Chief Engineer (EE Zone), Department of Power, Govt. of Arunachal Pradesh, Itanagar- 791 111
6. Chief Engineer (P&E), Department of Power, Govt. of Nagaland, Kohima - 797 001
7. Chief Engineer (P), Electricity Department, Govt. of Manipur, Keishampat, Imphal - 795 001
8. General Manager, TSECL, Agartala - 799 001
9. Addl. General Manager, NERLDC, Dongtiah-Lower Nongrah, Lapalang, Shillong -793 006
10. GM (Comml.), NERTS, PGCIL, Dongtiah-Lower Nongrah, Lapalang, Shillong -793 006
11. GM (LD&C), PGCIL, "Saudamini" Plot No.. 2, Sector - 29, Gurgaon, Haryana - 122 001
12. ED (O&M), NEEPCO Ltd., Brookland Compound, Lower New Colony, Shillong-793003
13. ED (Commercial), NEEPCO Ltd., Brookland Compound, Lower New Colony, Shillong-793003
14. ED (O&M), NHPC, NHPC Office Complex, Sector-33, Faridabad, Haryana-121003
15. ED (Commercial), NHPC, NHPC Office Complex, Sector-33, Faridabad, Haryana-121003
16. Vice President, PTCIL, 2nd Floor, NBCC Tower, 15, Bhikaji Cama Place, New Delhi - 110066
17. AGM (BD), NVVN, Core 5, 3rd floor, Scope Complex, 7 Institutional Area, Lodhi Rd., N. Delhi-3
18. Member Secretary, ERPC, 14 Golf Club Road, Tollygunge, Kolkata-700033
19. Chief Engineer, GM Division, CEA, Sewa Bhawan, R.K. Puram, New Delhi - 110066

Sub: Minutes of the 16th CC meeting held on 29/08/2011 at NEEPCO Conference Hall, Shillong.

Sir,

Please find enclosed herewith the minutes of 16th Commercial Committee Meeting held at NEEPCO Conference Hall, Shillong on 29th August, 2011 for your kind information and further necessary action please.

Encl.: As above

आपका / Yours faithfully,

(**ब. क. जैन** / B. K. Jain)

020%02020 / Member Secretary

1. SA to Member(GO&D), CEA, Sewa Bhawan, R.K. Puram, New Delhi - 110066
2. Chief Engineer, AEGCL, Bijuli Bhawan, Guwahati - 781001
3. Chief Engineer, APGCL, Bijuli Bhawan, Guwahati - 781001
4. MD, CA DISCOM, Bijuli Bhawan, Guwahati - 781001
5. MD, UA DISCOM, Bijuli Bhawan, Guwahati - 781001
6. MD, LA DISCOM, Bijuli Bhawan, Guwahati - 781001
7. Chief General Manager, SLDC Complex, AEGCL, Kahilipara, Guwahati - 781019
8. S.E. (Comml.), MeSEB Lumjingshai, Short Round Road, Shillong - 793 001
9. Head of SLDC, MeSEB, Lumjingshai, Short Round Road, Shillong - 793 001
10. Head of SLDC, Department of Power, Govt. of Arunachal Pradesh, Itanagar- 791 111
11. A.C.E. (Gen & Trans), Department of Power, Govt. of Nagaland, Kohima - 797 001
12. Head of SLDC, Department of Power, Dimapur, Nagaland
13. A.C.E. (Power-I), Electricity Department, Govt. of Manipur, Keishampat, Imphal - 795 001
14. Head of SLDC, Electricity Department, Govt. of Manipur, Keishampat, Imphal - 795 001
15. S.E. (Commercial), Department of Power, Govt. of Mizoram, Khatla, Aizawl - 796 001
16. Head of SLDC, Department of Power, Govt. of Mizoram, Aizawl - 796 001
17. Head of SLDC, TSECL, Agartala - 799 001
18. Chief Engineer, Loktak HEP, Vidyt Vihar, Komkeirap, P.O. Loktak, Manipur - 795 124

North Eastern Regional Power Committee

Minutes of the 16th Commercial Committee Meeting

Date: 29/08/2011

Venue: NEEPCO Conference Hall, Shillong.

The 16th Commercial Committee meeting of the NERPC was held at NEEPCO Conference Hall, Shillong on 29.08.2011. The list of participants is given at **Annexure-I.**

Shri N. Chakraborty, Executive Director (Comml), NEEPCO welcomed all the participants of 16th Commercial Committee Meeting and requested Shri U.Moral, Director (Tech.) NEEPCO to deliver a welcome speech.

Shri U.Moral Director (Tech.), NEEPCO welcomed all the participants of 16th Commercial Committee Meeting and wished the participants a pleasant stay at Shillong. He informed that some plants of NEEPCO are very old and they require proper maintenance and it has been brought to the notice of the forum for consideration.

Shri A.G.West Director (Fin.), NEEPCO also welcomed all the participants of 16th Commercial Committee Meeting and expressed his concern about the outstanding bills and arrears receivable by NEEPCO from its beneficiaries. He requested all the beneficiaries to pursue with their respective Governments so that the outstanding bills are cleared at the earliest.

Shri B.K.Jain, Member Secretary welcomed all the participants of 16th Commercial Committee Meeting and thanked NEEPCO for hosting the meeting. He agreed with the concerns expressed by Dir (Tech.) and Dir (Fin.) and assured that the forum will try to resolve such issues. However, for payment of outstanding dues, he requested NEEPCO to approach higher authorities of the concerned beneficiaries and if necessary, agenda can be brought in next TCC/ RPC meeting. He then requested Shri A.K.Mishra, SE (Comml) NERPC to take up the agenda items.

Then the agenda items were taken up.

1. Confirmation of the minutes of 15th CC Meeting held on 4th March 2011 at SLDC, Agartala

Minutes of the 15th CC Meeting held at Agartala on the 4th March 2011 were circulated, vide no. NERPC/COM/CC_Min/2011/4064-100 dated 16th March 2011. No observation has been received.

The Minutes of the 15th CCM were confirmed.

2. a) Presentation by NERLDC on commercial issues (presentation enclosed at Annexure - 2A)

b) Presentation by NERPC on Methodology for preparation of RTA and RTDA (presentation enclosed at Annexure - 2B)

3. Follow-up actions from previous meetings.

3.1 Downloading of Special Energy Meter Data through RS-485.

In the 15th Commercial Committee Meeting, AGM NERTS informed the members that: -

- *Out of total 20 stations, RS-485 Converters have been installed in the following 11 stations - Bongaigaon, Salakati, RC Nagar, Kumarghat, Badarpur, Khliehriat, Khandong, Kopili, Balipara, Nirjuli and Dimapur.*
- *4 nos. converters shall be installed departmentally in the following stations by 07/03/2011. Doyang, Aizawl, Jiribam and Ranganadi.*
- *5 nos. converters shall be installed in the following stations during installation of balance meters. Kathalguri, Mariani, Loktak, Samaguri and Yurembam.*

Deliberations in the Meeting

GM (Comml), NERTS informed the members that out of total 20 stations, work is completed in the following 14 stations - Bongaigaon, Salakati, RC Nagar, Kumarghat, Badarpur, Khliehriat, Khandong, Kopili, Balipara, Nirjuli, Dimapur, Doyang, Aizawl & Jiribam. Installation at Ranganadi, Kathalguri, & Loktak will be completed in September 2011. PCs for this purpose are not available at Mariani, Samaguri & Yurembam. Since meter readings at these locations are being taken by POWERGRID it is proposed to install AMR system with modems at these locations.

3.2 Replacement of all Secure make SEMs by L&T make SEMs in NER:

In the 15th Commercial Committee Meeting, AGM NERTS informed the members that: -

- *Out of 50 nos. meters, 17 nos. meters have been replaced during December 2010 at the following locations:
Lumsnong, Haflong, Dullavcherra, Pailapool, Jiribam, Kolasib and Aizawl.*
- *Installation at balance sites halted due to problem faced in accessing the meter data.*

Deliberations in the Meeting

GM (Comml), NERTS informed the members that Installation of balance 10 meters at locations given below will be completed in September 2011.

BTPS (2), Gorgaon(1), Lekhapani(1), Gelegphu(1), Tinsukia(1) Rupai(1), Deomali(1) Mokukchung(2)

3.3 Modification of Design Energy of hydro Electric Plants for calculation of ECR as per CERC (Terms and Conditions of Tariff) Regulations 2009.

In the 14th Commercial Committee Meeting, it was agreed that the detailed calculations submitted by NEEPCO will be examined by all the members and observations if any will be sent to NERPC Secretariat. Representatives from Tripura and Assam will verify the claims of NEEPCO from logbooks of the 2 Hydro Electric Projects as agreed in the 14th Commercial Committee Meeting. The issue may be reviewed in the next Commercial Committee Meeting.

Deliberations in the Meeting

Representative from NEEPCO informed the members that as per decision of the 14th Commercial Committee meeting, detail calculation on the modified design energy for the Ranganadi Hydro Electric Project (3 X 135 MW) and Kopili Stage II (1 X 25 MW) on account of low rain fall during 2009-10 have been circulated during the 15th Commercial Committee meeting held at Agartala on 04.03.2011. Representative from NEEPCO informed that since no comments were received from the beneficiaries till date on the said calculation, same may be considered as accepted for the purpose of computing ECR for recovery of Energy Charge shortfall as per the regulation 22 (6)(i) of the CERC (Terms and Conditions of Tariff) Regulations 2009.

However, as requested by the representatives from APDCL and MeECL, it was decided to allow another one month time, i.e., upto 29.09.2011, to the beneficiaries to communicate their comment, if any, on the aforesaid calculations to NEEPCO. It was also decided that if no comments were received within the said specified time, calculation circulated by NEEPCO would be considered as final and bills be raised by NEEPCO accordingly.

As advised by the Member Secretary, representative from NEEPCO re-circulated the calculation of modified design energy for the Ranganadi Hydro Electric Project and Kopili Stage II Power Station to the beneficiary states in the meeting.

3.4 Non-submission of weekly SEM readings by Tuesday noon

The issue was deliberated in the 15th Commercial Committee Meeting and the following points were observed: -

- The problem of sending SEM reading in time from Doyang HEP still persists. Representatives from NEEPCO informed the members that the issue has been pursued with concerned officials.
- Representatives from APDCL informed that Kahelipara, Sarusajai and other Sub-stations are sharing one DCD and therefore hampers timely sending of SEM reading from these locations. It was agreed that APDCL should pursue with NERLDC to provide adequate DCDs for the above locations so that SEM readings may be sent in time.
- Sr. Manager, NERLDC informed that the general trends of receipt of readings from other sub-stations have improved.

It was also agreed that Automatic Meter Reader may be installed in some of the critical locations as pilot projects. NERTS may explore the feasibility and the issue may be reviewed in the next Commercial Committee Meeting.

Deliberations in the Meeting

NERLDC representative informed that problems of Doyang, Kahelipara and Sarusajai have been sorted out.

GM (Comml.) NERTS informed that automatic meter reading pilot project would be initiated for Mariani and Samaguri and data collection would be at Misa. On a request from ASEB, it was agreed to include Tinsukia in the pilot project.

3.5 Payment of income Tax due to revision of tariff

The issue was deliberated in the 15th Commercial Committee Meeting and it was agreed that reconciliation is required between beneficiaries and NERTS. NERTS was requested to provide to the beneficiaries year-wise statements showing details of revision of transmission tariff depicting separately differences on income taxes due to such revisions and enclosing auditor certificate wherever applicable.

Deliberations in the Meeting

GM, NERTS informed the members that re-conciliation has been done.

4. Agenda items from NEEPCO.

4.1 Revision of Annual Fixed Charges (AFC) for Ranganadi Hydro-Electric Project (RHEP) (3x135 MW) and Agartala Gas Turbine Power Project (AGTPP) (4x21MW) for the Financial Years 2009-10 to 2011-12

Annual Fixed Charge (AFC) for AGTPP and RHEP for the tariff period 2009-14 have been issued by CERC on 11.03.2011 and 10.05.2011 respectively. While deciding on tariff vide the aforesaid orders, the central commission have considered MAT rate as applicable for the financial year 2008-09 for the purpose of grossing up of "Return on Equity" as the CERC (Terms and Conditions of Tariff) Regulations, 2009. However, the CERC (Terms and Conditions of Tariff) (Second Amendment) Regulations, 2011 provides the provision for grossing up of "Return on Equity" based on MAT/Corporate Income Tax rate as applicable for the respective financial year and revision of AFC accordingly. Relevant regulation of the aforesaid Tariff Amendment Regulations states as follows:

"6(5) The generating company or the transmission licensee, as the case may be, shall recover the shortfall or refund the excess Annual Fixed Charge on account of Return on Equity due to change in applicable Minimum Alternate/Corporate Income Tax Rate as per the Income Tax Act, 1961 (as amended from time to time) of the respective financial year directly without making any application before the Commission"

Based on the MAT rates for the financial year 2009-10, 2010-11 and 2011-12 as per the relevant Finance Acts and applicable Surcharge and Educational cess, the AFC for AGTPP and RHEP for the aforesaid financial years have been revised and stands as follows:

AGTPP (4x21 MW)

Particulars	Financial Years		
	2009-10	2010-11	2011-12
Depreciation	1714.87	1714.87	470.93
Interest on Loan	0.00	0.00	0.00
Return on Equity	3083.77	3196.73	3203.34
Interest on Working Capital	464.16	477.03	462.33
O & M Expences	2667.00	2819.88	2981.16
Total	7929.80	8208.51	7117.76

RHEP (3x135 MW)

Particulars	Financial Years		
	2009-10	2010-11	2011-12
Depreciation	9052.01	9055.58	9059.15
Interest on Loan	1744.85	980.43	300.04
Return on Equity	13600.87	14102.39	14119.57
Interest on Working Capital	786.22	796.70	799.74
O & M Expences	5551.91	5869.48	6205.21
Total	30735.86	30804.58	30483.71

Deliberations in the Meeting

Representative from NEEPCO circulated the calculation on revised Annual Fixed Charges (AFC) for Ranganadi Hydro-Electric Project and Agartala Gas Turbine Power Project due to consideration of Minimum Alternate Tax (MAT) rates for the financial years 2009-10, 2010-11 & 2011-12 as per the relevant Finance Acts. The revised AFC circulated is supported with detail calculation of "Return on Equity" & "Interest on Working Capital" and copies of relevant Finance Acts for MAT rates and amendment to relevant tariff regulation. Representative from NEEPCO communicated that the aforesaid revised AFC have been calculated in terms of CERC (Terms and Conditions of Tariff) (Second Amendment) Regulations, 2011. He also informed that as per the aforesaid amendment to the Regulations, no application is required to be filed before the Hon'ble Commission for the said revised AFC and the same should be effective from 01.04.2009.

It was decided that since the revision have been made as per the relevant tariff regulations & related amendment there-of, same are acceptable for immediate modification of AFC for the said two Power Stations with effect from 01.04.2009.

Members noted the same.

4.2 Dues on account of Arrear Bills on revision of Tariff

Arrear Bills raised to the beneficiaries on revision of AFC for RHEP and AGTPP are as follows:

Beneficiary	Arrear-RHEP	Arrear-AGTPP	Total
APDCL	8668.32	2386.23	11054.55
Mizoram	1142.30	326.32	1468.62
Manipur	1675.13	430.33	2105.46
TSECL	1507.40	915.34	2422.75
Ar. Pradesh	1292.80	326.18	1618.98
Nagaland	1067.34	295.49	1362.83
MeECL	2252.23	599.84	2852.07
Total	17605.52	5279.74	22885.26

Apart from the above, bills raised on beneficiaries on account of simple interest on arrear bill is Rs 2835.10 lakhs and bills relating to re-imburement of filing fee & publication fee is Rs 22.30 lakhs. So, total dues relating to revision of tariff for RHEP and AGTPP is Rs 25742.66 lakhs.

To incentivize the beneficiaries for early payment of arrear bills, NEEPCO proposed to allow rebate @2%, 1.5% and 1% for payment of arrear bills by the beneficiaries within 15 days, 30 days and 60 days respectively deviating from the regulation norms. But no response on the proposal received from the beneficiaries.

In fact, after expiry of 04 to 05 months from the date of arrear billing, no payment received till date on account of arrear bills.

Further arrear bills are likely to be raised to the beneficiaries on finalization of revised AFC for the remaining power stations of NEEPCO. Moreover, arrear bills will be raised shortly due to revision of AFC on account of MAT rates.

Deliberations in the Meeting

Representative from NEEPCO circulated beneficiary-wise dues relating to arrear bills already raised on them due to finalization of Annual Fixed Charges (AFC) for Ranganadi Hydro-Electric Project and Agartala Gas Turbine Power Project for the period 2009-14. Total arrear bill consists of arrear on sale of energy for the period 2009-10 & 2010-11, Simple interest on arrear bill, filing fee for 2009-10 & 2010-11 and publication fee. He requested all the beneficiaries to look into the matter and to take up with their appropriate authority on priority to settle the claims.

NEEPCO also apprised the members that more arrear bills are likely to be raised shortly on finalization of AFC for the period 2009-14 for the remaining power stations of the Corporation and revision of AFC due to applicable MAT rate as per the CERC (Terms and Conditions of Tariff) (Second Amendment) Regulations, 2011.

Member Secretary, NERPC also advised the beneficiaries to take up the matter relating to payment of arrear bills on priority and to discuss the issue with their respective appropriate authority for proper planning and early payment to NEEPCO.

It was also agreed that beneficiaries may approach NEEPCO with a proposal to stagger the arrear bills so that the burden on beneficiaries may be distributed in longer period.

4.3 Receivable from Meghalaya Energy Corporation Ltd (MeECL) on sale of energy – long outstanding dues

As per records, total dues receivable from MeECL as on 06.08.2011 is Rs. 13090.70 lakhs, out of which dues outstanding for 90 days & above is Rs.6913.07 lakhs.

M/S MeECL is falling continuously to liquidate their outstanding dues. In spite of our repeated request to clear the dues, no improvement on the same could be noticed till date.

Payment trend of MeECL for last one year clearly shows that they are setting only about 50% of their dues relating to monthly energy bills. As a result, outstanding dues of MeECL are increasing every day.

Due to enhancement of O&M expenses including fuel cost for the thermal power stations, NEEPCO is facing acute financial crunch and the same will be deteriorated further unless the outstanding dues are not settled by the beneficiaries in time.

Deliberations in the Meeting

Representatives from NEEPCO expressed their deep concern on the huge outstanding dues receivable by them from MeECL. They requested the representatives from MeECL to take up the matter with their appropriate authority on priority basis for early payment of NEEPCO's dues and to arrange for releasing at least a substantial lump-sum amount against their outstanding dues immediately, which will help NEEPCO to solve its present financial crunch to some extent.

Member Secretary, NERPC also advised the representatives from MeECL to arrange for early settlement of NEEPCO's dues.

MeECL assured to look into the matter.

4.4 Payment made by beneficiaries and reference of bills there-of

Generally, payments are released by the beneficiaries in two modes:

- a) Through by banks through Letter of Credit (LOC)
- b) Directly through Cheque/RTGS.

In case of payment through LOC, NEEPCO could link the same with the concerned bill. But in case of payment made by the beneficiaries directly through Cheque/RTGS, NEEPCO is not in a position to link the same with the concerned bill unless the same is communicated by the beneficiary.

It is seen that in many cases no communication received by NEEPCO from the beneficiaries regarding the bill references for which payments have been released. The said problem is more crucial where payments are made in parts by the beneficiaries. This results in difficulty by NEEPCO in maintaining records/accounts.

Deliberations in the Meeting

Representative from NEEPCO communicated that in many cases the payments received by them are not supported by the bill details, which results in difficulty for proper accounting & recording. The problem is more crucial in cases where part payments are received. NEEPCO requested the members from the beneficiaries to communicate henceforth the bill details for each & every payments released by them to NEEPCO. Moreover, NEEPCO requested them to furnish a consolidated statement showing bill details for all the payment released to NEEPCO since 01.04.2011 till date. In addition, NEEPCO expressed that in case no such detail is communicated by the beneficiary, same will be considered as payment against their oldest outstanding bill.

Member Secretary, NERPC also advised all the beneficiaries to communicate the bill references for each and every payments released by them to any generating company for proper reconciliation of accounts. He also advised that in case no communication on bill detail on payment released is received, the generating company may communicate to the beneficiary the bill reference against which the said payment is adjusted by them.

Members agreed to the same.

4.5 Procurement of one new runner with related accessories for RHEP

The Ranganadi Hydro Electric Plant with installed capacity 3X135 MW was commissioned in the year 2002. The RHEP units have been in operation for more than 8(eight) years and this Power Station have been supplying a major share of power requirement in the NER region.

It is to mention that, on inspection during the last Annual Planned Maintenance (APM) of the Power Plant units, erosion on the runner blades have been observed by the site engineers. The runner being vital equipment for the Power station, action has been initiated for procurement of one new runner along with required accessories directly from the Original Equipment Manufacturer (M/S BHEL) to maintain the equipment as spare. As per offer of M/S BHEL, the tentative financial implication in procurement of one new runner with accessories shall be Rs. 10.60 crores.

The runner of all the three units of the Power Plant is identical and against all the three units, there is no spare runner to meet any exigency.

Moreover, manufacturing and delivery time of BHEL for such equipment is more than 18(eighteen) months. Repair of such vital equipment also requires substantial time and therefore in the event exigency, for restoration in minimum down time of generating unit, keeping one spare runner at hand is of utmost importance.

Deliberations in the Meeting

Representative from NEEPCO highlighted the importance to keep one spare runner for the Ranganadi Hydro Electric Power Station in the interest of maintaining smooth plant operation and generation of electricity for its beneficiary states. Representative from NEEPCO also explained the justification to keep one such spare runner considering age of the power station, conditions of the existing runner blades, repairing time for damaged runner, if required and delivery time for a new runner by the OEM.

NEEPCO was advised to approach CERC as per tariff regulations to procure spare runner.

5. Agenda items from TSECL

5.1 Presently Manipur have LC amounting to Rs.65.21 lakhs for Unit IV and Rs.107.59 lakhs for Unit V. The LC amount needs to be enhanced to Rs.107.59 lakhs for Unit IV. In spite of repeated request from Tripura, Manipur have not increase the LC of Rs.107.59 lakhs yet. Presently as on today, Manipur has an outstanding amount of Rs.2.00 crores and above. In every month the amount will be increased approx. 40 lakhs. Manipur is to provide commitment for increase of LC amount as per MOM and clear up the outstanding.

Deliberations in the Meeting

Representative from Manipur informed the members that the outstanding amount of Rs. 2 crores will be cleared within this week and Govt. approval is awaited for enhancement of LC.

5.2 TSECL raised bill on 13/05/2011 to Mizoram against REA for the month of energy sold on April 11 amounting to Rs.1,74,13,054.83 against LC amount Rs.1.65 crores. But payment received on 03/06/11 though LC was reported to be alive. Again TSECL raised bill for energy sold on May and June,11 amounting to Rs.96,92,426.42 and Rs.1,16,82,009.83 respectively. But till today TSECL have not received any payment from advising Bank as Mizoram failed to reinstate the LC amount with their SBI, Dawrpui Branch. It is also mention here that Mizoram have not opened the LC against purchase of power from Unit V of Baramura till date. As on today Mizoram has an outstanding of Rs.2.32 crores. Dept. of Power & Electricity, Govt. of Mizoram is to ensure irrevocable/revolving LC for timely payment to TSECL. Otherwise TSECL will be compelled to regulate supply power with one week notice.

Deliberations in the Meeting

SE, SLDC, Mizoram informed the members that LC has been opened for Unit-V of Baramura and due to problem in fund transfer; payment was not received by Tripura immediately.

5.3 As per CERC regulation every constituent have to open LC for UI disbursement. UI payment is always received in late. For this late payment and surcharge is to be levied. TSECL requested NERLDC to publish constituent wise amount receivable/payable from the pool. NERLDC is further requested to take all out efforts to recover the receivable amount so that payment can be made to the constituent with applicable interest accrued.

Deliberations in the Meeting

NERLDC representative clarified that statement on UI outstanding is available in NERLDC website. Regarding opening of LC, NERLDC informed that only NEEPCO and Tripura had opened the same. It was decided that NERLDC would issue reminders to NER Constituents to open LC in line with CERC Regulations

5.4 In view of number of CERC order in respect of Fixation of Transmission as well as generation tariff with retrospective effect, the Transmission as well as generation utility is raising number of claims to the beneficiary for payment. It is now unmanageable to account for such claims as this kind of claims are very old i.e. 5 to 6 years back. In this situation, the beneficiary like Tripura is now not in a

position to exactly ascertain how much of outstanding dues are pending for payment. A methodology is to be devised for reconciliation of outstanding dues.

Members noted and agreed.

5.5 Point of connection charges has already been notified by CERC w.e.f. 1st July, 2011. Now as per directives of CERC, a transmission service agreement is to be signed between CTU & other beneficiary using the Transmission assets of PGCIL. Model TSA has been circulated by PGCIL accordingly. The said TSA is a voluminous document consists of Transmission service agreement, revenue sharing agreement and billing, collection and disbursement procedure. A one day workshop along with presentation is required to be organized by CTU to explain each and every clause of the said agreement as well as the action to be taken by the beneficiary. This will help the beneficiaries to understand the TSA agreement as well as to process the same to authority for acceptance. For more participation in the workshop, constituent's wise workshop is requested.

Deliberations in the Meeting

It was agreed that TSECL or any other beneficiary may seek clarification from PGCIL on the TSA clauses.

5.6 Under POC regime how the arrear bills of Annual Transmission charge, if any, will be shared and paid needs clarification. Further the total annual Transmission charge recoverable and amount recovered under POC needs reconciliation and this should be published monthly for information of all constituents.

Deliberations in the Meeting

Clarified in the presentation of NERPC.

6. Agenda items from APDCL (ASEB)

6.1 Erratic generation of RHEP, NEEPCO during June, 2011 and July, 2011

It is seen that during June, 2011 and July, 2011 there is very erratic and unreliable generation from RHEP, NEEPCO. During this year though there is shortage of rainfall in NER but even when there was rainfall in catchments area of RHEP the daily generation of RHEP are not in commensuration with the rainfall.

The issue has been referred to OCC.

6.2 Impact of Implementation of new PoC charge for July 2011

It is seen that due to implementation of new PoC system for sharing of transmission charges and losses for ISTS, the burden of transmission charges payable by APDCL for July' 2011 has gone up. Prima Facie one of the reasons of increase of transmission charges under new mechanism is the consideration of approved injection by Hydro Generating Station @ 110% of its installed capacity.

Thereby the share burden of beneficiary states on account of PoC charges attributable to generators is escalated than that of actual capacity. It is worth mentioning here that in this region most of the central Sector generating stations have not been able to attain the normative plant availability factor on sustained basis not to speak of excess generation beyond installed capacity.

Deliberations in the Meeting

Clarified in the presentation of NERPC.

7. Agenda items from MeECL

7.1 In the recent weeks there have been many revisions on the UI billings. The reason for such revision is due to the revision of schedule drawl of Nagaland. However, it is found that there are no changes in the schedule drawl of Meghalaya whereas there is revision in the amount of UI billing. Strangely, it is found that wherever receivables by Meghalaya, there are no change and wherever payables by Meghalaya there are an increase in amount. Clarification on this issue is solicited.

Deliberations in the Meeting

It was explained with example in the presentation of NERLDC that any revision in UI Account would have impact in the incoming / outgoing amount of the pool thereby having monetary implication on all Constituents. MeECL representative appreciated the issue and it was agreed that any UI payables/ receivables arising out of revisions of UI Accounts may be adjusted in the subsequent weeks UI Accounts issued by NERPC following the issue of revised UI Account.

7.2 Annual Fixed Charges of ISGS and POWERGRID are never updated in the REA even after so many orders been out months before, Also the new lines by POWERGRID needs to updated.

Deliberations in the Meeting

Regarding new lines of POWERGRID, PoC has been implemented from July 2011 and the list of lines is not required to be depicted in the REA anymore. The financial year corresponding to AFC depicted in the REA will be corrected henceforth.

7.3 It has been found that information on UI outstanding has been given to CERC which is different from what the constituents have. The reason for such is that due to the revision, which are yet to be dispatched to the constituents. In future it is suggested that no amount by included if it is not yet intimated to the constituents.

Deliberations in the Meeting

On an enquiry from MeECL, NERLDC representative clarified that any information to CERC on UI outstanding is given only based on weekly UI Accounts published by NERPC Secretariat in its website. No intimation is given before publication of UI Account. It was agreed to follow the similar practice.

8. Agenda items from NERLDC.

8.1 UI outstanding:

Status of UI outstanding as on 05.08.2011 is attached (**Annexure - 8.1**). From the same it can be seen that Assam and Mizoram are the largest defaulters with outstanding of Rs.10.73 Crores and Rs.3.13 Crores respectively. Such payment default is creating serious constraint in timely settlement of UI pool account.

Deliberations in the Meeting

Mizoram representative intimated that the outstanding would be cleared shortly. ASEB was advised to take necessary action to clear the dues at the earliest.

8.2 Non-payment of NERLDC fees and charges bills

CERC has issued (fees and charges of Regional Load Despatch Centers and other related matters) Regulation, 2009 vide notification No.L-7/145(160)2008-CERC dated 18.9.2009 and order dated 18.3.2011 on approval of fees and charges of NERLDC for the period 01.4.200- to 31.03.2014.

As per the provisions of CERC Regulation, monthly bills for NERLDC fees and charges from October, 2010 onwards have already been issued on the users. **Meghalaya and Nagaland** are yet to make any payment against above bills.

Defaulting constituents may frame action plan to liquidate outstanding dues.

Deliberations in the Meeting

MeECL representative stated that they have initiated action for payment of NERLDC fees and charges bills. Member Secretary, NERPC requested all the Constituents to make regular payment of monthly NERLDC fees and charges bill to enable NERLDC to continue to provide its services to the Region.

NERLDC representative stated that the monthly bills can be sent to the constituents by e-mail which would enable them to process and pay quickly thereby enabling availing rebate as per CERC Regulations. It was also intimated by NERLDC that TSECL has been following the practice. ASEB representative advised NERLDC to send the bill by e-mail as well. It was decided that bills would be sent to all by e-mail also.

NERLDC requested all Constituents to furnish details of payments made against the bills along with details of TDS if any. The case of NHPC was specifically mentioned who have been deducting TDS while making payment but information regarding this was not being sent to NERLDC. NHPC representative agreed to look into it and do the needful.

8.3 Non-submission of weekly SEM readings by Kolasib (Mizoram) and Deomali (Ar.Pradesh).

As per IEGC (**effective from 3.5.2010**) Sub-clause-22 of Clause-6.4 (**demarcation of responsibilities**), all concerned utilities in whose premises SEMs are installed shall take weekly meter readings and transmit the same to RLDC by Tuesday noon for timely issuance of UI-account.

Kolasib and Deomali are the drawal points of the respective states. SEMs have been installed at all the drawl points. But till now, weekly SEM readings are not received from the said locations. All our efforts to streamline collection and transmittal of weekly SEM reading from the above locations have yielded no result. In the absence of readings from the above locations, we are forced to use other end readings for energy accounting computations.

Deliberations in the Meeting

Mizoram representative stated that installation of software in Kolasib was complete and reading would be sent now onwards. Since Arunachal representative was not present, NERLDC was requested to take up with Arunachal Pradesh again.

8.4 Irregular receipt of weekly SEM readings

Receipt of weekly SEM readings is irregular from Misa (PG) and 79-Tilla (Tripura). Persuasion/Reminder is needed in every week to get weekly readings.

Deliberations in the Meeting

GM (Comml.), POWERGRID NERTS intimated that the matter has been taken-up with Misa and there would not be any delay in sending the readings. He requested to take up the issues like non-receipt of SEM reading in OCC forum as this activity is done by operational persons. TSECL also assured to send SEM readings timely from 79 Tilla S/S.

8.5 Charging of 132 KV Rangia (Assam) – Deothang (Bhutan) line

Chief General Manager (SLDC), AEGCL proposed charging of Rangia-Deothang line on regular basis vide letter no.AEGCL/CGM/SLDC/Tech-12/NERLDC/Pt-1/11/34 dated July 28, 2011.

Deliberations in the Meeting

NERLDC representative explained the position through the PowerPoint presentation (Annexure - 2A). The following decision taken in 65th OCC meeting of ERPC held on 19.08.2011 was noted:

QUOTE

In order to achieve increased grid connectivity of Kiruchu HEP, OCC concurred with above ERLDC proposal for charging the 132 kV Rangia-Motunga line. ERLDC was requested to take a lead for installation of requisite meters in the line. As additional ER-NER tie point would come up with this line, OCC referred the matter to Commercial Sub-Committee for further discussion.

UNQUOTE

It was decided that charging of the line would be agreed subject to the fact that there would not be any loading of transmission charges on NER for 132 KV Rangia-Deothang line. Further, ASEB would confirm if they would claim any wheeling charges for wheeling of the Bhutan energy from Rangia upto Salakati and same would be intimated to ERPC for discussion in their Commercial forum.

In the meantime, POWERGRID NERTS would go ahead with installation of L&T make SEM at both ends of Rangia-Motonga line.

8.6 Tabling quarterly figures of UI and Reactive Pool Account in Commercial Committee

The quarterly figures of UI and Reactive Accounts were tabled in the meeting by NERLDC. Observations, if any should be sent within 15 days to NERLDC. If no observation is received, the accounts will be taken as final.

9. Agenda items from NHPC.

9.1 Positive and negative UI during shut down period of all the Loktak Units.

UI charges amounting to Rs 1.30 lakhs have been paid by Loktak Power Station during the period when the power station was under complete shutdown from 04/05/2011 to 24/06/2011, even though the station had not drawn from the grid.

Deliberations in the Meeting

The issue was deliberated and it was agreed to revise the UI accounts for relevant period by setting the payables of NHPC to zero and adjusting the same proportionately in the receivables provided NHPC could establish that they had intimated NERLDC/ NERPC about non-availability of Station Transformer prior to availing shutdown of Loktak HEP.

It was also agreed that all generating stations should send the SEM readings of Station Transformer to NERLDC on weekly basis. If any SEM or station transformer is out of service, the same should be communicated immediately to NERLDC/ NERPC to prevent such problems in future.

9.2 During spillage of water due to heavy rainfall, hydel Power Plants may be allowed upward revision of generation.

Deliberations in the Meeting

NHPC was advised to revise the DCs as per provisions in the IEGC 2010.

9.3 Regional Energy Account from April 2009 to May 2011 needs to be revised on the basis of installed capacity of Loktak Power Station as allowed by CERC vide Loktak's Tariff order for the period of 2009-14. Matter has already been taken up with NERPC.

Deliberations in the Meeting

NERPC issued the revised REAs vide letter no. NERPC/COM/REA/2011/2857-81 dated 24th August 2011. Members noted the same.

9.4 Letter of Credit amounting to Rs 31.62 lakhs opened by Mizoram in favour of NHPC Ltd has expired on 31.03.2011. The renewed LC has not been received till date.

Deliberations in the Meeting

SE, SLDC, Mizoram informed that renewal of LC has already been processed and confirmation from Bank was awaited.

9.5 Letter of Credit amounting to Rs 34.00 lakhs opened by Arunachal Pradesh in favour of NHPC Ltd has expired on 31.03.2011. The renewed LC has not been received till date.

Deliberations in the Meeting

NHPC was advised to pursue with Govt. of Arunachal Pradesh since AP was not represented.

10. Agenda items from Mizoram.

10.1 Defective SEMs at Bawktlang 132KV Sub-station, Kolasib.

The SEM installed at Aizawl (PG) incoming panel boards at Bawktlang 132KV Sub-station, Kolasib is found defective since October 2009. An official letter for bringing the matter to the notice of the Manager, PGCIL, Luangmual, Aizawl, had been sent on 16th April 2010. But as the said meter is showing no display till today and since the said meter is taken into account for preparation of Energy Accounting for the state of Mizoram, the implementing agency (PGCIL) is requested to take necessary action for rectification of the said meter immediately.

Discussed under Item 8.3.

11. Agenda items from NERTS(Powergrid).

11.1 Outstanding dues against constituents.

Constituents	Total outstanding (Rs in crore)	Outstanding (Rs in crore) over 60 days
Ar. Pradesh	5.65	1.06
ASEB (Assam)	57.01	18.63
Manipur	13.52	8.25
MeECL (Meghalaya)	16.84	9.67
Mizoram	5.57	1.10
Nagaland	3.99	2.23
TSECL (Tripura)	3.24	1.18
TOTALS	105.82	42.12

The total outstanding as on 31.07.11 is Rs 105.82 crore. Out of total outstanding Rs. 42.12 crore is over 60 days. It may be seen that outstanding against most constituents has gone to an alarming level. Constituents are requested to clear at least the outstanding dues over 60 days, by August 31, 2011 to avoid regulation of power. POWERGRID may not have any other alternative, but to resort regulation if the outstanding dues over 60 days are not cleared till the end of August'11 or a time bound commitment for liquidation of outstanding dues is not received from the constituents.

Deliberations in the Meeting

All beneficiaries were requested to pursue with respective organization to liquidate the outstanding dues at the earliest and prevent regulation of power supply.

11.2 Signing of Transmission Service Agreement.

The TSA has been signed only by NEEPCO and Mizoram. Since signing of TSA is mandatory as per CERC norms, the other Constituents were requested to sign the TSA which has already been sent to them.

Members noted the same.

GM (Comml), NERTS informed the members that a new rebate scheme of Powergrid for the period 23/08/2011 to 31/03/2012 is available and requested the beneficiaries to make prompt payment so that applicable rebate may be availed. (Copy enclosed at Annexure - 11.2).

12. Date & venue for the next CC meeting.

It was agreed that the next Commercial Committee Meeting would be held in the month of November/ December 2011 and will be hosted by NHPC. Exact date and venue will be intimated in due course.

Member Secretary, NERPC thanked all the participants of Commercial Committee Meeting and also thanked the NEEPCO for hosting the meeting.

The meeting ended with vote of thanks to the Chair.

Annexure – IList of participants in the 16th Commercial Committee meeting of the NERPC

SN	NAME OF PARTICIPANT	DESIGNATION	e-mail/ Mobile/ Fax
ARUNACHAL PRADESH			
	Not represented		
ASSAM			
1	M.K.Adhikary	DGM (Comml)	m_adhikary@msn.com 9864049287
2	Kumud Goswami	AGM (Comml)	kumud_goswami@rediffmail.com 9864020019 0361-2739501
3	J.K.Baishya	AGM, SLDC	jatinbaishya@yahoo.com 9435041494 0361-2382263
MANIPUR			
1	S. Premananda Singh	EE (NED-II)	premanandasunban@gmail.com 9856249998
2	I. Saratchandra	SO (Comml)	saratchandrairom@yahoo.in 9856208473 0385-2451106
MEGHALAYA			
1	A. Kharpan	SE, SLDC	apkharpan@yahoo.co.in 9436117802
2	F.E. Kharshiing	EE, SLDC	sldc.shg@gmail.com 9863066960 0364-2550020
3	S.S. Kharmih	EE, SM	9436164780
4	T. Gidon	AEE, SLDC	
MIZORAM			
1	C. Lianlunga	SE, SLDC	lianlunga@gmail.com 9436142332 0389-2311397
NAGALAND			
	Not represented		
TRIPURA			
1	A. K. Sinha	AGM	f_ashim@rediffmail.com 9436462358 03826-223323
2	Sankha Baran Debbarma		sankhabaran@rediffmail.com 9436453401
NEEPCO			
1	P.C. Burman	DGM (Comml)	barmanpcb@gmail.com 9435144141 0364-2225035
2	Rana Bose	Sr. Manager (Fin.)	rana_og@rediffmail.com 9436632123 0364-2225035

Annexure – IList of participants in the 16th Commercial Committee meeting of the NERPC

SN	NAME OF PARTICIPANT	DESIGNATION	e-mail/ Mobile/ Fax
NHPC			
1	K.L. Solanki	GM	klsolanki@yahoo.com 8974000835 03879-261223
2	N.A. Kumar	Mgr (ESC)	ashoknhpc@yahoo.com 9911543642 0129-2256558
3	M.M. Mishra	DM (Fin.)	mmm_mis@sify.com 9911537220
NTPC			
	Not represented		
NERTS (PGCIL)			
1	Ajoy Patir	GM (Comml)	apatir@gmail.com 9436302529 0364-2536397
Trading Companies			
	Not represented		
NERLDC			
1	T.S. Singh	AGM	tssingh@rediffmail.com 9436302717
2	R. Sutradhar	CM (MO)	rajib_shg@hotmail.com 9436302714
3	S.K. saha	Mgr (MO)	skr_saha@yahoo.co.in 9436335371
NERPC			
1	B .K. Jain	Member Secretary	bkjain1952@yahoo.co.in 9436706436 0364-2520030
2	P.D. Siwal	SE(Operation)	pdsiwal@yahoo.com 9436998378
3	A.K. Mishra	SE(Commercial)	akmishra1956@rediffmail.com 9402134275
4	Lalrinsanga	EE(Commercial)	lhrengsa@yahoo.com 9436161886
5	S. M. Aimol	E.E	shialloa@yahoo.com 8974002106

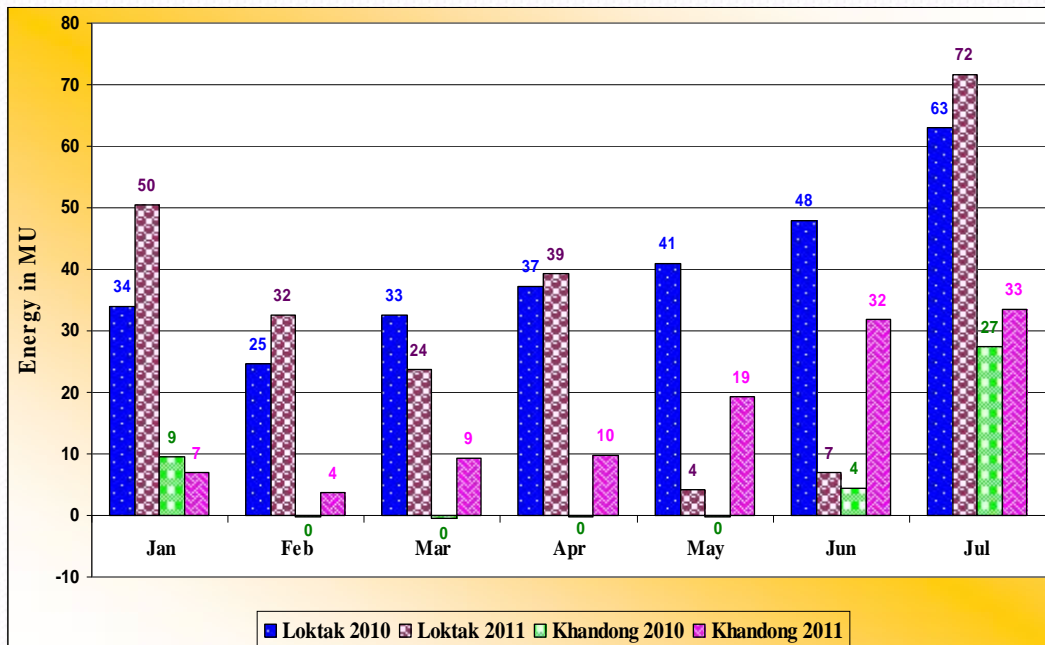


Presentation in 16th Commercial Committee meeting of NER at Shillong

**NERLDC, Shillong
29th August, 2011**

**Generation - Demand pattern in NER
during
2010 and 2011**

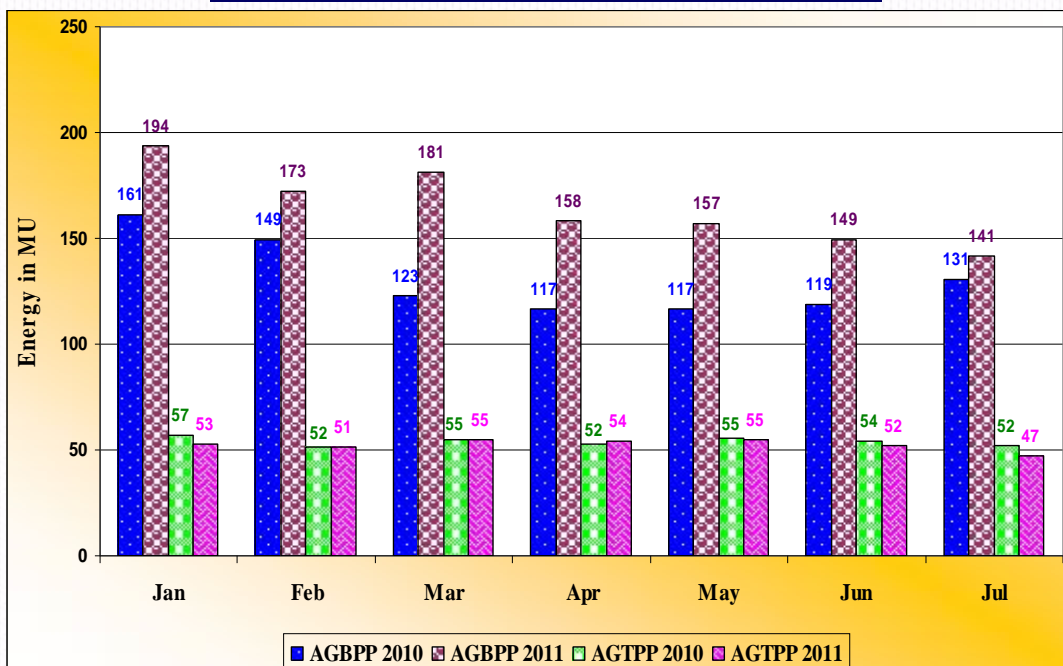
Generation of Loktak and Khandong



Loktak Gen 2010 : 280 MU
 2011 : 229 MU

Khandong Gen 2010 : 40 MU
 2011 : 114 MU

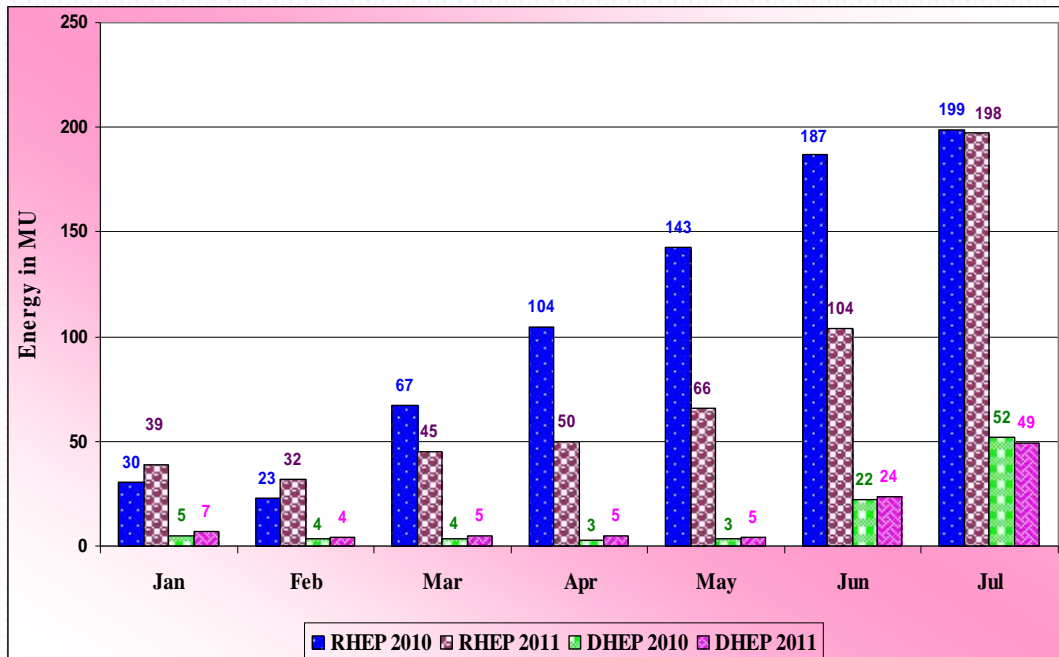
Generation of AGBPP & AGTPP



AGBPP Gen 2010 : 917 MU
 2011 : 1153 MU

AGTPP Gen 2010 : 377 MU
 2011 : 367 MU

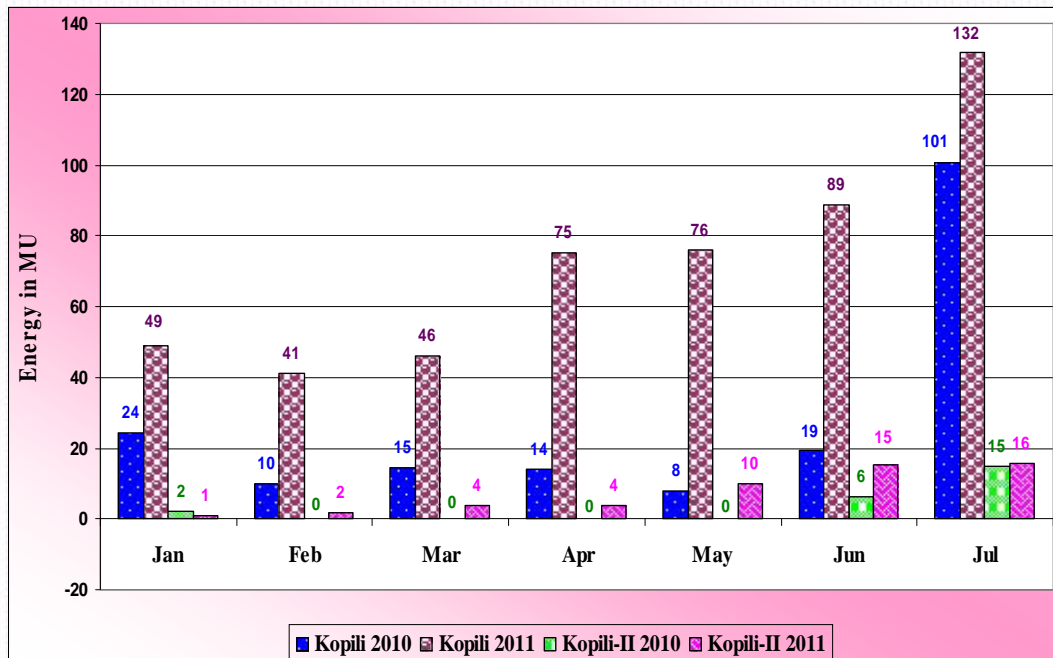
Generation of RHEP and DHEP



RHEP Gen 2010 : 753 MU
 2011 : 533 MU

DHEP Gen 2010 : 93 MU
 2011 : 98 MU

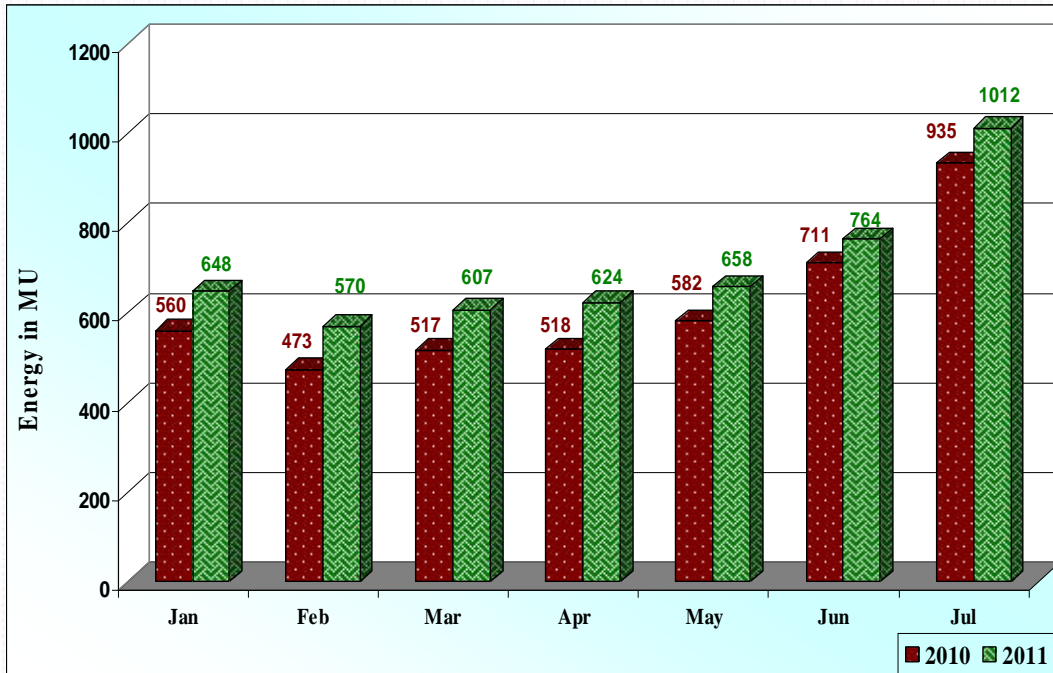
Generation of Kopili and Kopili-II



Kopili Gen 2010 : 191 MU
 2011 : 507 MU

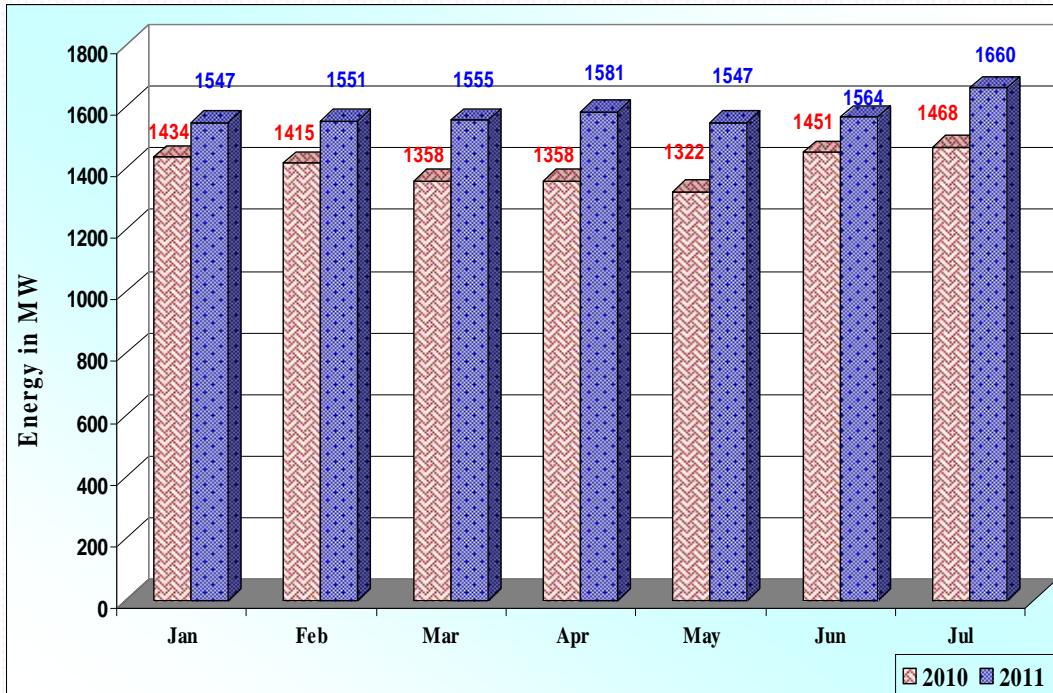
Kopili-II Gen 2010 : 23 MU
 2011 : 51 MU

Total Generation of NER

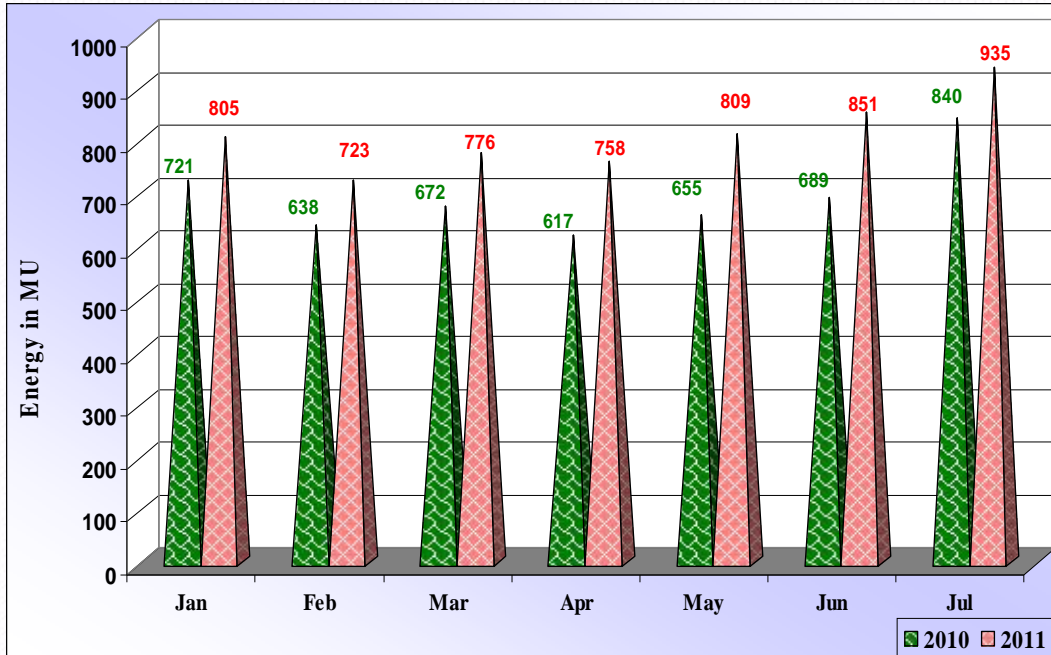


Total Generation in 2010 : 4295 MU , Total Generation in 2011 : 4881 MU

Peak Demand Met of NER

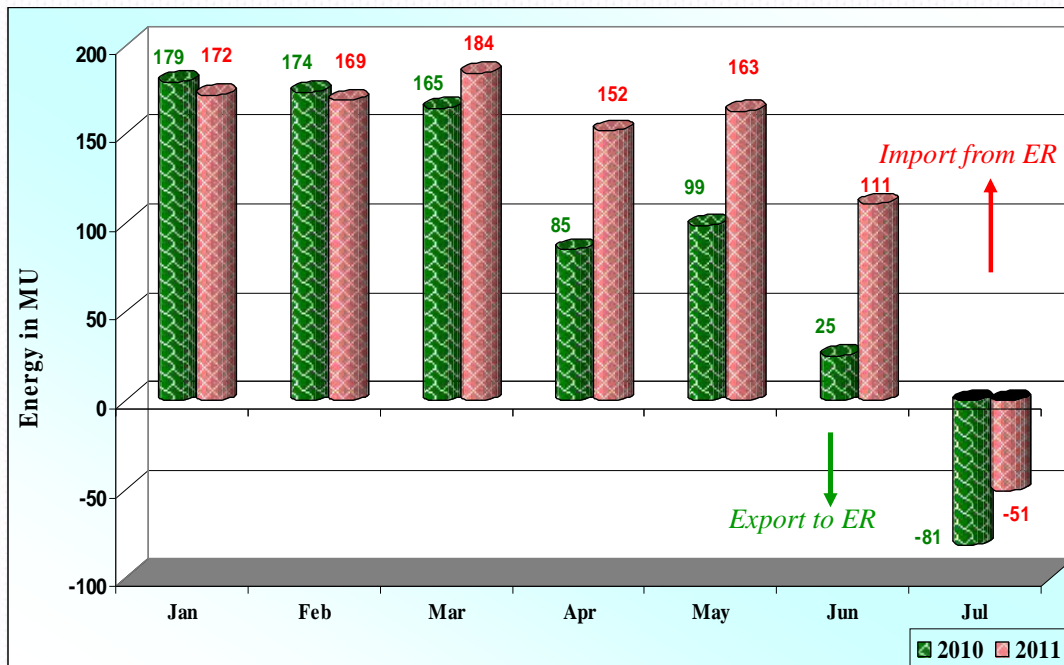


Energy Met of NER



Total met in 2010 : 4833 MU , Total met in 2011 : 5657 MU

ER-NER net Energy Exchange



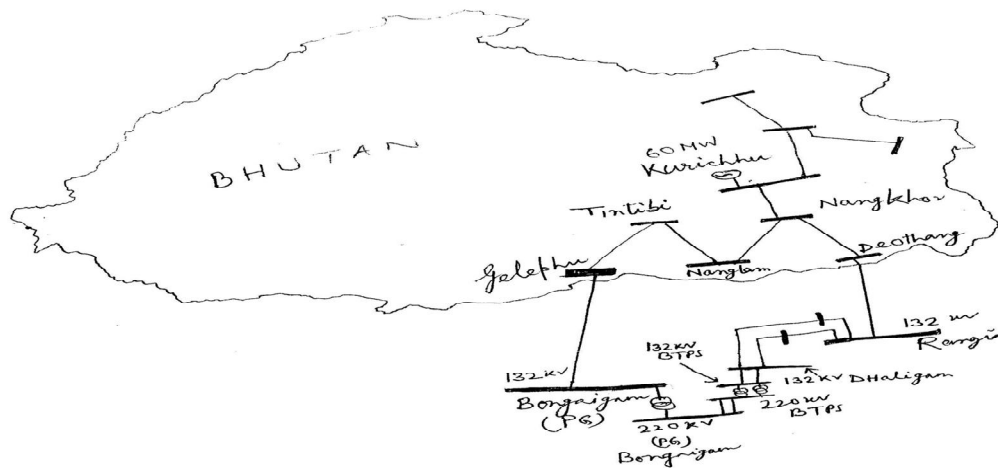
Total exchange in 2010 : 646 MU , Total exchange in 2011 : 901 MU

Charging of 132 KV Rangia-Motonga line

- The said line is international interconnection with Bhutan and beneficiaries of Bhutan (Kurichu HEP) are in ER
- AEGCL requested for charging of the line on continuous basis.
- NERLDC took up the matter with ERLDC and requested for discussion in ERPC forum
- ERPC discussed in 65th. OCC meeting

Contd.....

Charging of 132 KV Rangia-Motonga line



SINGLE LINE DIAGRAM
(INDICATIVE ONLY)

Contd.....

Charging of 132 KV Rangia-Motonga line

MINUTES OF 65TH OCC MEETING HELD ON 19.08.11 AT ERPC, KOLKATA

ITEM NO. E.8: CHARGING OF 132 KV RANGIA (ASSAM) DEOTHANG/MOTUNGA (BHUTAN) LINE --- ERLDC

132 kV Rangia –Deothang/Motung line between Bhutan and Assam has since been ready for commissioning. A request was received from Bhutan for closing this line. The issue was discussed in ERPC forum also. Presently power from Kiruchu is being scheduled over 132 kV Salakati-Geylegphu line for its beneficiaries as DVC & West Bengal. With the commissioning of afore said line, Kiruchu power would be further getting an alternative route through NER, thus increasing the reliability. With the operation of the aforesaid line, the scheduling of power of Kiruchu would continue as per normal practice being followed now. However, additional meters at Rangia as well as Motunga need to be installed. Under the circumstances, **NERTS, Powergrid may be advised for installation of meters at the aforesaid places. For meters at Motunga, Powergrid may raise necessary bills on PTC for reimbursement. With the commissioning of the aforesaid line, Rangia, Salakati, Birpara and Bongaigaon would be considered as ER-NER boundary/tie points.**

Deliberation in the meeting

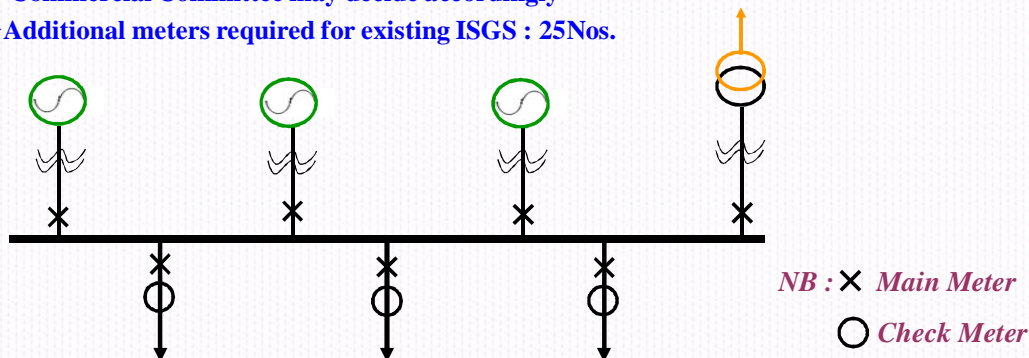
In order to achieve increased grid connectivity of Kiruchu HEP, OCC concurred with above ERLDC proposal for charging the 132 kV Rangia-Motunga line. ERLDC was requested to take a lead for installation of requisite meters in the line. As additional ER-NER tie point would come up with this line, OCC referred the matter to Commercial Sub-Committee for further discussion.

Installation of Check meter in ISGS locations

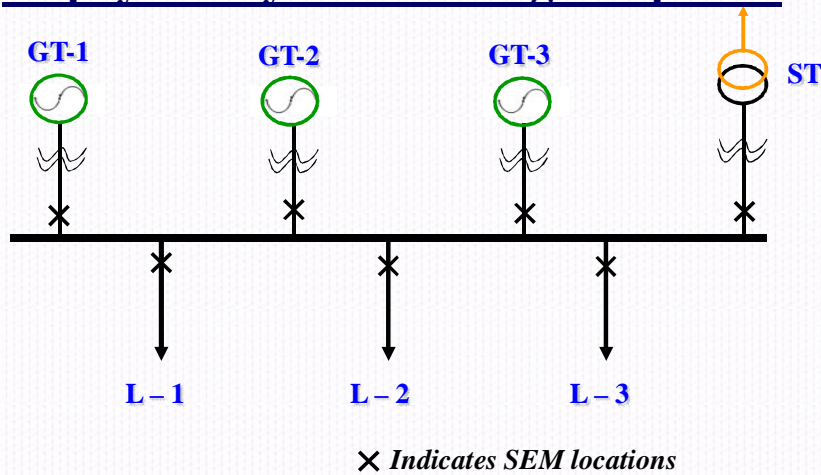
As per clause 7 (1) of CEA “Installation and Operation of Meters Regulations, 2006” dtd. 17th March, 2006.

Sl No.	Stages	Main Meter	Check Meter	Standby Meter
A.	Generating Station	On all outgoing Feeders	On all outgoing Feeders	(i) High Voltage (HV) side of Generator Transformers. (ii) High Voltage (HV) side of all Station Auxiliary Transformers.

- Check Meters should be installed at all outgoing feeders of ISGS
- Commercial Committee may decide accordingly
- Additional meters required for existing ISGS : 25Nos.



UI payable by ISGS during S/D period



- When ST is in service, power is drawn by ISGS is through ST.
- In case of Loktak, as ST was not there, power was drawn from DISCOM during S/D period from 03/05/11 to 26/06/11.

Contd.....

UI payable by ISGS during S/D period

- SEMs are connected at GTs, ST & Outgoing EHV feeders
- Accuracy of SEM, CT & PT gets reflected in computed energy.
- There will always be a net bus mismatch depending on accuracy of CT/PT/SEM.
- Meters are installed as per CEA “Installation and Operation of Meters Regulations, 2006” dtd. 17th March, 2006.
- In normal running, this mismatch is absorbed by the ISGS.

Contd.....

UI payable by ISGS during S/D period

- Whenever ST is out of service, same needs to be informed to RLDC/RPC.
- In such case, Generation by a station may be treated as zero during S/D (similar practice being followed by NRPC)
- GT/ST readings should always be sent to RLDC even during S/D period by using 63.3 V single phase supply to SEM.
- This will enable check before issuance of accounts.

Revision of UI Account due to change in Nagaland Schedule

*Example : 13/03/2011
Before UI Revision*

Organisation	UI Payable (₹)	UI Receivable (₹)	Min of Payable / Receivable	UI Payable (₹)	UI Receivable (₹)
MeECL	2194130		3422174	1653500	
Nagaland	901796			679595	
4541090		3422174		3422174	3422174

After UI Revision

Organisation	UI Payable (₹)	UI Receivable (₹)	Min of Payable / Receivable	UI Payable (₹)	UI Receivable (₹)
MeECL	2194130		3422174	1942367	
Nagaland	226451			200467	
3865746		3422174	0	3422174	3422174

Change in Nagaland schedule has impact in other States as well

Thank You

***Methodology of preparing Regional
Transmission Account and Regional
Transmission Deviation Account***

Presentation by –
Lalrinsanga
Executive Engineer
North Eastern Regional Power Committee

INPUTS

- The Point of Connection Tariff has been implemented in the country w.e.f 1st July 2011. The Regional Transmission Account and Regional Transmission Deviation Account have already been issued by NERPC Secretariat for the month of July 2011.

- Approved Injection :-

$$\text{Hydro} = \text{IC} \times (1 - \text{Aux}) \times 1.10$$

$$\text{Thermal} = \text{IC} \times (1 - \text{Aux}) \times 1.05$$

INPUTS

- Approved Withdrawal = Summation of weighted average allocated share (in MW) from Central Generating Stations at the ex-bus of generating stations and long term access, medium term open access granted by CTU.

- PoC Charge = Rs. 85000/MW/Month both for Approved Injection and Approved Withdrawal

Preparation of Regional Transmission Account

- Transmission Charge to be paid by beneficiaries for the month (in Rs.) = Approved Withdrawal x PoC Charge.
- Transmission Charge to be paid by generators for the month (in Rs.)
= Approved Injection x PoC Charge.

However, the transmission charges payable by a generating station due to Approved Injection will be shared by its long term beneficiaries in proportion to their allocation in the generating station.

Preparation of Regional Transmission Account

- If there is any approved additional medium term withdrawal, the concern beneficiary has to pay additional transmission charge at the same rate.
- If there is any approved additional medium term injection, the concerned generator has to bill directly to the concerned beneficiary for additional transmission charge at the same rate.

The additional transmission charge due to approved additional medium term injection will not be shared by the Long Term Beneficiaries.

Preparation of Regional Transmission Account

- Revenue from Approved Additional Medium term open access that was not considered in the Approved Injection / Approved Withdrawal shall be used for truing up the YEARLY TRANSMISSION CHARGE for the next financial year.
- The allocation to NER states from outside NER was not included in the Approved Withdrawal for the month of July 2011, which may be included from the month of August 2011
- [RTA for July 2011](#)

Preparation of Regional Transmission Deviation Account

- Approved Total Injection is inclusive of Approved Injection + Additional Medium Term Injection + Approved Short Term Injection through Bilateral and exchanges.
- Approved Total Withdrawal is inclusive of Approved Withdrawal (inclusive of allocation from ER) + Additional Medium Term Withdrawal + Approved Short Term Withdrawal through Bilateral and exchanges.

Preparation of Regional Transmission Deviation Account

- Actual Injection or Withdrawal (in MW) is calculated from block-wise energy (in MWH) recorded by SEMs. The MWH figure is multiplied by 4 to get the average MW figure for that block.
- Deviation up to 20% of Approved Total Injection/Withdrawal will be charged at the normal PoC charge i.e. Rs. 85000/MW/month i.e. Rs. 28.56/MW/time-block for the month of July 2011.

Preparation of Regional Transmission Deviation Account

- Transmission charges due to deviation up to 20% of Approved Total Withdrawal shall be borne by the concerned beneficiary.
- Transmission charges due to deviation up to 20% of Approved Total Injection shall be passed on to beneficiaries in proportion to their shares.

Preparation of Regional Transmission Deviation Account

- Any deviation beyond 20% of Approved Total Injection/ Withdrawal will be charged at 1.25 times the normal PoC charge i.e. Rs. 32.325/MW/time-block for the month of July 2011.
- Transmission charges arising out of deviation beyond 20% of Approved Total Injection/ Withdrawal will be borne directly by the concerned utility and may not be passed on to beneficiaries by generators.

Preparation of Regional Transmission Deviation Account

- Any withdrawal by Generator and injection by Demand DIC is reverse deviation and charges will be applicable at 1.25 times the normal PoC. Reverse deviation from generators are observed in the month of July 2011 specially during the off-peak period.
- [RTDA for July 2011](#)

Points to be noted

- As per the regulation, losses are also to be shared by DICs and therefore injection loss of 1.5% and withdrawal loss of 1.5% have been implemented from 1st July 2011. For Example, schedule in the 1st block of 01.07.2011 looks like this [Schedule](#)
- List of non-ISTS lines whose charges were being shared as on 15th June 2010 are included in the calculation of PoC charges. (Clause 4.7, assumptions in computation of PoC Charges)

Points to be noted

- For inclusion of new lines, CERC regulation says (Reg 19, L1/44/2010-CERC dated 4.4.2011)

“We direct that all lines, which have at the time of notification of these regulations, been approved by the respective RPCs, would continue to be considered *ipso facto*. For certifying new non ISTS lines for carrying inter-state power, the same would have to be determined through the process of load flow studies. The results of the load flow studies, on an annual average basis, should show these lines carrying more than 50% of the total power carried by it to be inter-state power.”

NRPC is carrying out Load Flow Studies from IIT, Mumbai and ERPC is carrying out such studies from ERLDC. NERPC may also start such studies.

Points to be noted

- Allocation from shared project like Baramura are not considered in the approved injection /withdrawal at present.
- The target Availability of POWERGRID lines remain unchanged and will be calculated as per norms mentioned in CERC (Terms and Conditions of Tariff) Regulations, 2009.

Points to be noted

- Any under-recovery/ over-recovery will be adjusted in the preceding Yearly Transmission Charge. YTC to be revised initially on a six monthly basis i.e. on 1st April and 1st October each year and later on three monthly basis, i.e. on 1st April, 1st July, 1st October and 1st December to represent season-wise demarcation. (Reg 10, L1/44/2010-CERC dated 4.4.2011)

Present YTC considered for calculation of PoC

Points to be noted

- All DICs are required to sign the TSA, RSA & BCD, only NEEPCO and Mizoram have signed the agreements till date.
- The 1st Bill raised to beneficiaries due to Approved Injection and Approved Withdrawal are unlikely to change unless there is change in allocation from the ISGS.
- Rebate of 2% allowed if payment is made within 1 working day and rebate of 1% allowed if payment is made within 1 month.

Thank You

UNSCHEDULED INTERCHANGE STATUS AS ON

05.08.11

Amount in Lakhs

NAME OF UTILITY	CUMULATIVE RECEIVABLE UPTO Wk-16 of FY 11-12(i.e. upto 17.07.11)	CUMULATIVE PAYABLE UPTO Wk-16 of FY 11-12 (i.e. upto 17.07.11)	UI AMOUNT RECEIVED FROM THE POOL (by NER Const. till Wk-13(part) & by ER till Wk-12 of 11-12)	UI SURPLUS AMOUNT RECEIVED FROM POOL	TOTAL AMOUNT RECEIVED FROM POOL INCLUDING DIFFERENTIAL	UI AMOUNT PAID TO THE POOL	Additional UI Charge payable to pool from Week-01 of 2009-10 till Wk-16 of 2011-12 (upto 17.07.11)	ADDITIONAL UI CHARGE PAID TO POOL	BALANCE UI INCL. ADDITIONAL UI CHARGE PAYABLE TO POOL	BALANCE UI RECEIVABLE FROM POOL AFTER SETTLEMENT OF DIFFERENTIAL
	(1)	(2)	(3)	(4)	(5)=(3)+(4)	(6)	(7)	(8)	9=(2+7- 6- 8)	10 = (1 - 5)
AP	220.61434	87.05293	158.11430	62.50004	220.61434	87.05293	179.82427	179.82427	0.00000	0.00000
ASSAM	1198.74742	1148.53124	1058.97269	139.77473	1198.74742	133.32211	448.43259	390.35748	1073.28424	0.00000
MANIPUR	606.49268	86.10962	165.02880	191.71027	356.73908	86.10962	119.01647	119.01647	0.00000	249.75361
MEGHALAYA	361.39852	177.52647	118.26166	0.00000	118.26166	64.24606	209.05715	184.17351	138.16405	243.13686
MIZORAM	104.66055	1084.09193	44.23702	0.27129	44.50831	779.20640	122.93676	114.03681	313.78548	60.15224
NAGALAND	241.25550	1.79015	57.51739	124.92820	182.44559	1.79015	358.92127	358.92127	0.00000	58.80991
TRIPURA	424.67172	0.00000	352.09175	72.57996	424.67172	0.00000	178.56802	178.56802	0.00000	0.00000
NHPC	45.43613	2.81401	38.87982	6.55631	45.43613	2.81401	0.00000	0.00000	0.00000	0.00000
NEEPCO	494.33205	80.11994	379.46556	114.86649	494.33205	77.97062	55.31060	55.31060	2.14932	0.00000
ER	305.8659	1450.30417	81.97345	223.89247	305.86592	1369.6344	0.00000	0.0000	80.6698	0.00000
Pool Differential	114.8657	0.00000	0.00000	0.00000	0.00000	0.00000	0.00000	0.00000	0.00000	937.0798
TOTAL	4118.3405	4118.3405	2454.5424	937.0798	3391.6222	2602.1463	1672.0671	1580.2084	1608.0529	1548.9324

UI Billed:	2003-04	7037.755	Lacs.	2004-05	21942.294	Lacs.	2005-06	14511.463	Lacs.
	2006-07	21623.292	Lacs.	2007-08	49485.132	Lacs.	2008-09	51278.893	Lacs.
	2009-10	25101.930	Lacs.	2010-11	22289.951	Lacs.			

Note:- 1. UI Payable and UI Receivable by each utility as on 28.03.11 have been used as opening balance of current FY 2011-12.

Col. 1 & 2 show opening balance plus UI payable/receivable till date. The statement includes ER settlement since Wk-12

- Differential amount started from Wk-131 of 2007-08 (07.01.08 - 13.01.08). Differential figure in Col.1 indicates amount w.e.f Wk-11 of 2011-12
- Difference between Col. 3 and Col. 6 is ₹ 147.60382 Lacs is equal to pool differential amt. realised during 2011-12(From Week-11)
- Total pool differential amount as per bill till Wk-16 (11.07.11 - 17.07.11) : ₹ 3843.09971 Lacs A
- Total pool differential amount realised till date ₹ 3843.09971 Lacs B
- Total pool differential amount disbursed till date ₹ 58.95357 Lacs C
- Total pool differential amount in bank as on date (5 - 6) ₹ 3754.33683 Lacs D
- Total Addl. UI amount as per bill till Wk-16 (11.07.11 - 17.07.11) : ₹ 1672.06712 Lacs E
- Total Additional UI charges realized: ₹ 1580.20843 Lacs F
- Total Addl. UI amount disbursed till date ₹ 812.02744 Lacs G
- Total Addl. amount in bank as on date (9 - 10) ₹ 768.18099 Lacs H
- UI interest amount collected & disbursed to NER constituents ₹ 66.09880 Lacs I
- RTGS charge deducted by Bank from UI capping A/C ₹ 0.01246 Lacs J
- Balance amount transferred to PSDF (excluding bank interest) ₹ 4118.49360 Lacs K (excluding bank interest)
- Amount with NERLDC ₹ 404.01176 Lacs (D + H - J - K)
- Pool differential in Col.1 indicates ISGS capping amount since Week-11 of 2011-12. The capping amount of Week-01 to Week-10 (₹ 221.36389 lakhs) is included in opening balance as same was settled during 2010-11.
- Difference between Col. 9 and Col. 10 is ₹ 59.12051 Lacs is equal to sum of Addl. UI amt and pool differential not paid to pool.

**REBATE SCHEME OF POWERGRID FOR THE PERIOD 23/08/2011 TO 31/03/2011 FOR ALLOWING
REBATE FOR PROMPT PAYMENT**

Rebate shall be allowed on gross bill amount settled through RTGS, EFT, LC or cheque @ 2% up to 6th day from presentation of Bill (i.e., T + 5) and for other days (i.e., T + 6 to T + 30) as per following table:

Day	Approved
T + 0	2.00
T + 1	2.00
T + 2	2.00
T + 3	2.00
T + 4	2.00
T + 5	2.00
T + 6	1.98
T + 7	1.96
T + 8	1.94
T + 9	1.79
T + 10	1.76
T + 11	1.73
T + 12	1.70
T + 13	1.67
T + 14	1.64
T + 15	1.61
T + 16	1.58
T + 17	1.55
T + 18	1.52
T + 19	1.49
T + 20	1.46
T + 21	1.43
T + 22	1.40
T + 23	1.37
T + 24	1.34
T + 25	1.31
T + 26	1.28
T + 27	1.25
T + 28	1.22
T + 29	1.19
T + 30	1.00

T = Day of presentation of bill

The above scheme is applicable for payments towards ULDC, Communication / other charges / billing of bilateral assets, bills of past period on account of CERC/ Appellate Tribunal Order, etc. The rebate policy shall be effective from 23/08/2011 up to 31/03/2012 & subject to reconfirmation for the next Financial Year.

A similar scheme may be operated under PoC regime subject to consent of ISTS licensees and approval of CERC