



भारत सरकार Government of India  
 विद्युत मंत्रालय Ministry of Power  
 उत्तर पूर्वी क्षेत्रीय विद्युत समिति  
 North Eastern Regional Power Committee  
 मेघालया स्टेट हाउसिंग फिनांस को-ऑपरेटिव सोसायटी लि. बिल्डिंग  
 Meghalaya State Housing Finance Co-Operative Society Ltd. Building  
 नॉग्रिम हिल्स, शिल्लॉंग - 793003  
 Nongrim Hills, Shillong - 793003.

**SPEED POST/FAX**  
 Ph : 0364-2520034  
 Fax: 0364-2520030  
 email: [msnerpc@dataone.in](mailto:msnerpc@dataone.in)  
 website: [www.nerpc.nic.in](http://www.nerpc.nic.in)

No. 103/2/NERPC/OCC/2008/ 2480-515

Date: 28<sup>th</sup> August, 2008

To

1. Member (Tech), Assam State Electricity Board, Bijuli Bhawan, Paltan Bazar, Guwahati-781 001
2. Member (Tech), MeSEB, Lumjingshai, Short Round Road, Shillong - 793 001
3. Chief Engineer (WE Zone), Department of Power, Govt. of Arunachal Pradesh, Itanagar- 791 111
4. Chief Engineer (EE Zone), Department of Power, Govt. of Arunachal Pradesh, Itanagar- 791 111
5. Chief Engineer (P), Department of Power, Govt. of Nagaland, Kohima - 797 001
6. Chief Engineer (P), Electricity Department, Govt. of Manipur, Keishampat, Imphal - 795 001
7. Chief Engineer (P&E), Department of Power, Govt. of Mizoram, Aizawl - 796 001
8. General Manager, TSECL, Agartala - 799 001
9. GM, NERLDC, Dongtiah-Lower Nongrah, Lapalang, Shillong -793 006
10. ED (O&M), NERTS, PGCIL, Dongtiah-Lower Nongrah, Lapalang, Shillong -793 006
11. ED (O&M), NEEPCO Ltd., Brookland Compound, Lower New Colony, Shillong-793003
12. ED (Commercial), NEEPCO Ltd., Brookland Compound, Lower New Colony, Shillong-793003
13. ED (O&M), NHPC, NHPC Office Complex, Sector-33, Faridabad, Haryana-121003
14. ED (Commercial), NHPC, NHPC Office Complex, Sector-33, Faridabad, Haryana-121003
15. Vice President, PTCIL, 2<sup>nd</sup> Floor, NBCC Tower, 15, Bhikaji Cama Place, New Delhi
16. AGM(BD), NVVN, Core5, 3<sup>rd</sup> Floor, Scope Complex, 7 Institutional Area, Lodhi Road, New Delhi
17. Member Secretary, ERPC, 14 Golf Club Road, Tollygunge, Kolkata-700033
18. Chief Engineer, GM Division, Central Electricity Authority, New Delhi - 110016

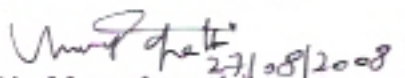
Sir,

Sub: Minutes of the 29<sup>th</sup> OCC Meeting held on 05<sup>th</sup> August, 2008 at Shillong.

The Minutes of the 29<sup>th</sup> OCC Meeting of NERPC held on 05/08/2008 at NERPC Conference Hall, Shillong is enclosed for favour of kind information and necessary action please.

Encl: As above

भद्वीय / Yours faithfully,

  
 (A. Magudapathi)

सदस्य सचिव / Member Secretary

Copy to:

1. SA to Member(GO&D), CEA, Sewa Bhawan, R.K. Puram, New Delhi - 110066
2. Chief Engineer, AEGCL, Bijuli Bhavan, Guwahati - 781001
3. Chief Engineer, APGCL, Bijuli Bhavan, Guwahati - 781001
4. MD, CA DISCOM, Bijuli Bhavan, Guwahati - 781001
5. MD, UA DISCOM, Bijuli Bhavan, Guwahati - 781001
6. MD, LA DISCOM, Bijuli Bhavan, Guwahati - 781001
7. CGM (LDC), SLDC Complex, AEGCL, Kahelipara, Guwahati-781019.
8. S.E. (Trans. & Dist), MeSEB Lumjingshai, Short Round Road, Shillong - 793 001
9. Head of SLDC, MeSEB, Lumjingshai, Short Round Road, Shillong - 793 001
10. Head of SLDC, Department of Power, Govt. of Arunachal Pradesh, Itanagar- 791 111
11. A.C.E. (Gen & Trans), Department of Power, Govt. of Nagaland, Kohima - 797 001
12. Head of SLDC, Department of Power, Dimapur, Nagaland
13. A.C.E. (Power-I), Electricity Department, Govt. of Manipur, Keishampat, Imphal - 795 001
14. Head of SLDC, Electricity Department, Govt. of Manipur, Keishampat, Imphal - 795 001
15. S.E. (Trans & Dist), Department of Power, Govt. of Mizoram, Aizawl - 796 001
16. Head of SLDC, Department of Power, Govt. of Mizoram, Aizawl - 796 001
17. Head of SLDC, TSECL, Agartala - 799 001
18. Chief Engineer(Elect), Loktak HEP, Vidyut Vihar, Kom Keirap, Manipur- 795124



# **North Eastern Regional Power Committee**

## **Minutes of 29<sup>th</sup> Operation Coordination Committee Meeting**

**Date:** 05/08/2008

**Venue:** NERPC Secretariat, Shillong

Sh. A. Magudapathi, Member Secretary, NERPC addressed the participants and conveyed his warm welcome. Then agenda items were taken up.

List of participants is at [Annexure-I](#).

### **1. Confirmation of the minutes of 28<sup>th</sup> Operation Coordination Committee meeting held at NERPC Secretariat, Shillong on 9<sup>th</sup>, July 2008.**

The minutes of the 28<sup>th</sup> Operation Co-ordination Committee meeting held at NERPC Secretariat, Shillong were confirmed without any amendment as no observation was received from the constituents.

### **2. Installation of Backup Meter at Kopili Stage-II – NERLDC.**

The proposal given by NERLDC vide letter No.NERLDC/Comml/105/7872-76 dt 16.07.08 is enclosed as [Annexure-II](#). In reply, representative from KHEP, NEEPCO stated that they had the provision, but, it did not support the software provided by NERLDC. MS, NERPC suggested to arrange a joint visit to Kopili Power Station by the officials of NERLDC, NEEPCO and NERPC so that the matter could be resolved then and there itself.

### **3. Distribution of Power at DHEP Township and adjoining area – Nagaland.**

This issue could not be deliberated since no representative from Nagaland was present in the meeting.

### **4. Requisition of Power from Kumguri Power Project 750 MW (3x250 MW) in Kokrajhar District, Assam – Manipur.**

ASEB representatives informed that there was no such power project to be commissioned at Kokrajhar District of Assam. The OCC forum concluded that it might be about the proposed Bongaigaon Thermal Power Station of NTPC. Regarding allocation of power, MS, NERPC informed that Ministry of Power, GoI would finalise the allocation from ISGS as per norms.

### **5. Replacement of Transformer at Nirjuli Sub-Station – PGCIL :**

This issue could not be deliberated and resolved since the representative from NERTS was not present in the meeting. However, it was informed that the issue would be discussed in the 6<sup>th</sup> TCC / 6<sup>th</sup> RPC meetings to be held in New Delhi on 7<sup>th</sup> / 8<sup>th</sup> August, 2008.

## **6. Generation Planning :**

The reservoir levels recorded as on 07.08.08 were as follows :

<u>Sl.No.</u>	<u>HEP</u>	<u>Reservoir level (in meters)</u>	<u>Energy Content (in MU) for the month</u>
1.	Khandong	719.30	27
2.	Kopili	609.50	53
3.	Loktak	769	
4.	Doyang	333	45.60
5.	Barapani	3197 feet	
6.	Gumti	88.90	

So, on the basis of the reservoir levels, it was proposed by the NERLDC the generation schedule for the coming month as follows :

1. Khandong + Kopili-II = (1.056 + 0.504) MU/day
2. Kopili = 3.097 ( w.e.f. 30.07.08)
3. Loktak = 1.998 MU/day
4. Doyang = 1.80 MU/day

Members agreed to the decision.

ASEB requested to maintain generation at least near to the DC; otherwise they had to face difficulty in complying their bilateral agreements. NEEPCO representatives stated that only in case of Kopili, they failed to maintain due to natural problem, in other cases they maintained. Regarding LGBR data, MS informed that it was prepared by CEA, New Delhi on the basis of the data provided by the respective constituents.

## **7. Outage Planning for Generator & Transmission elements:**

The approved outage planning for the Transmission elements for the month of August'08 is furnished in **Annexure-III**. Regarding generating Stations, NEEPCO representative gave the following schedule of planned outage :

1. Kathalguri ISGS: G-3 is under shut down till 7<sup>th</sup> Aug'08.
2. G-4 will be under S/d from 21.8.08 till 16.9.08

These are taken for overhauling purposes.

All the Steam Generators are to be taken under S/d from 28.8.08 to 15.9.08 for condenser cleaning. The loss of nearly 150 MW because of this s/d will be compensated by generating fully in Koipili HEP during this period as Kopili may have sufficient reserve.

## **8. Review of Grid Performance in the Previous Month:**

The data furnished by NERLDC in this regard is enclosed in **Annexure-IV**.

Assam & Ar. Pradesh's demand met increased by double digit in %agewise during last month compared to previous month / corresponding month of the previous year. It was also seen during presentation that Tripura & Meghalaya States have a negative figures, this is mainly due to transmission/transformation bottleneck in the 132 kV pocket and in regard to Tripura it may be attributed due to bilateral trading.

Reservoir levels of the major reservoirs were less in comparison with last year for the corresponding period.

Kahelipara S/s experienced very low voltage level of the order of 126 kV during peak hours. ASEB representatives informed that this was due to heavy industrial loads at Sisugram which is fed from Kahelipara S/s. This would be overcome after installing one 100 MVA transformer at Rangia to meet Sisugram's load by feeding from Kahelipara S/s.

NERLDC observed that Ranganadi HEP's generation exceeded considerably to the tune of 420 MW for 24 hrs for at least 4 to 5 days a week as per SEM data. This practice should be avoided and they should maintain the generation as per DC. NEEPCO representatives explained that it was not 420 MW but 412 MW only which they resorted to for precautionary measure to avoid catastrophic effect of flood. In case of Loktak HEP, water level is allowed to rise to its FRL.

#### **9. Major Grid disturbances in the previous month ( July 2008):**

There was a major grid failure at 23:54 hrs on 7<sup>th</sup> July'08. This was due to failure of one CT at Misa-Samaguri-I. It results in tripping of the ICT at Misa due to overload. The detail report as submitted by NERLDC is furnished at [Annexure-V](#).

#### **10. Any other items:**

Representative from Tripura wanted to know the status regarding additional 132 kV transmission line between Kopili and Khandong . MS told that it was already discussed in the last TCC / RPC meeting. NEEPCO informed that the work has already been awarded. It is supposed to be completed by March' 09.

#### **11. Date and venue of next OCC.**

It was decided tentatively in the forum to hold the next OCCM (30<sup>th</sup> ) in the NERPC Secretariat on 9<sup>th</sup> September, 2008 at 10:00 AM.

Members expressed their heartfelt grace and thanks to Sh. A. Magudapathi, Member Secretary, NERPC who will superannuate on 31<sup>st</sup> August 2008. Member Secretary expressed his sincere thanks to all delegates including those who couldn't attend the meeting. He said he was happy to succeed in sifting the Secretariat office from the old building at Nongrimbah Road to this new building located at Nongrim Hills and that helped him to convene the meetings here instead of various places which were inconvenient for all. He also conveyed his gratitude to all for their full co-operation in all the matters during his tenure in NER.

\*\*\*\*\*

**NERPC/CEA****List of Participants in the 29<sup>th</sup> OCC meeting held on 05/08/2008**

Venue : NERPC Secretariat, Shillong

Sl. No	Name & Designation	Organization	Contact No. /e-mail ID
1	Er. Bar Takum, E.E	DoP, Ar. Pradesh	9436040417
2	Er. W. Rehman, E.E	DoP, Ar. Pradesh	9436050735
3	Sh. H. Hazarika, D.G.M	LDC, AEGCL	9854809104
4	Sh.A.K. Saikia, Sr. Mgr	SLDC, AEGCL	9864116176
5	Sh. D.J. Lyngdoh, A.E.E	SLDC, MeSEB	9863063375
6	Sh. T. Gidon, A.E.E	SLDC, MeSEB	9436326178
7	Smt. Sampa Sen, Manager	SLDC, Tripura	9436120263
8	Sh. H. Lalnunsanga, A.E	P&E, Mizoram	9436144651
9	Sh. H. Zonunsanga, E.E	P&E, Mizoram	9436156337
10	Sh. Benjamin L. Saiato, E.E	System Control	9436024085
11	Sh.Th.Kamin mohan Singh, E.E	TCD - I	9856506106
12	Sh. B.B. Sharma, Sr. Manager	NHPC	9436038547
13	Sh. T.S. Singh, D.G.M	NERLDC	9436302717
14	Sh. N.R. Paul, Chief Manager	NERLDC	9436302723
15	Sh. S.K. Saha, Dy. Manager	NERLDC	9436335371
16	Sh. B. Medhi, Engineer	NERLDC	9436335376
17	Sh. M. Hussain, Manager	NERLDC	9436302713
18	Sh. H.K. Changmai, D.G.M	KHEP, NEEPCO	03670-288233
19	Sh. Bhaskar Goswami, S.M	NEEPCO	0364-2504355
20	Sh. K.K. Khongwar, Dy.Manager	KHEP, NEEPCO	03670-288617
21	Sh. A. Magudapathi, M.S	NERPC	9436706436
22	Sh. G. Medhi, A.E	NERPC	0364-2520046

**POWERGRID CORPORATION OF INDIA LIMITED  
NORTH EASTERN REGIONAL LOAD DESPATCH CENTRE  
SHILLONG**

NERLDC/Comm/105/7872-76

Date: 16.07.2008

To:  
ED (O&M),  
NEEPCO,  
Lower New Colony,  
Shillong-793003.

Copy To:  
1. MS, NERPC  
2. ED(Comm), NEEPCO  
3. DGM(E), KHEP, NEEPCO  
4. AGM(O&M), NERTS, Shillong

Sub: Installation of backup meter at Kopili Stage-II

Ref: (i) Msg No. KPH/08/97 dtd 12/07/08  
(ii) Msg No. KPH/08/98 dtd 13/07/08  
(iii) NEEPCO/KHEP/DGM(E)/O&M-06/2008-09/1031 dtd 14/07/08  
(iv) Msg No. KPH/08/102 dtd 15/07/08

Sir,

The present scheme of SEMs at Khandong and Kopili-II is enclosed herewith. Khandong and Kopili-II generators inject power to common 132 KV bus and generation from these stations is evacuated through common outgoing feeders. As a result it is not possible to segregate ex-bus injection of the individual stations. Under such circumstances, a mutually agreed methodology (copy enclosed) for separate/individual energy accounting of the two generating stations is being followed. It is ensured that total ex-bus energy injection by NEEPCO from these generating stations is properly accounted and energy computation of individual stations is done as per agreed methodology. As per the meter installed in Khandong/Kopili-II, although there is backup arrangement for total injection by these stations, there does not exist any backup in case of Kopili-II station injection.

During the period as mentioned in referred communications, due to erroneous energy recording by Kopili-II GT, computation of Kopili-II injection is not possible in the absence of backup. To avoid such problem, it is necessary to install one more SEM at Kopili-II GT which is to be used as backup. The SEM has to be installed using different CT/PT source, installation at 11 KV side may serve the purpose.

You are requested to examine and confirm on this matter.

In the meantime, we shall continue to compute Khandong/Kopili-II injection as per agreed methodology where proper reflection of total injection of Khandong and Kopili-II is ensured.

Encl: As Above



*L.K. Kanungo*  
(L.K. Kanungo)  
GM, NERLDC

**Annexure – III**

**Proposed Shut down Program of POWERGRID Elements for the month of July, 08**

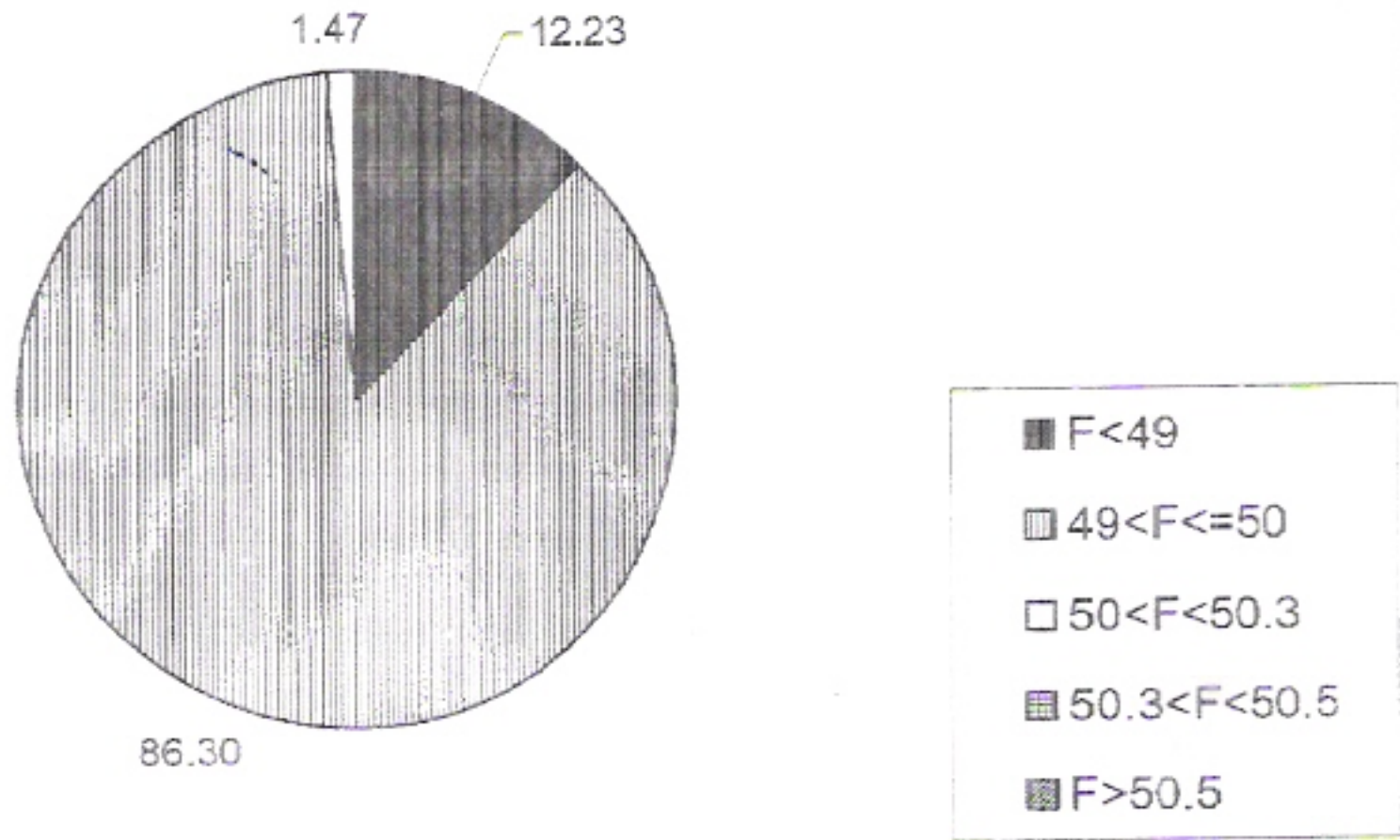
S/N	NAME OF T/L	S/D DATE	S/D TIME	PURPOSE	FEEDERS AFFECTED
1	132 KV Gohpur - Itanagar	28.08.08	08:00hrs to 16:00hrs	AMP	Gohpur - Itanagar
2	132 KV Khandong - Khliehriat - I	27.08.08			Khandong - Khliehriat - I
3	132 KV Loktak - Imphal - II	11.08.08			Loktak - Imphal - II
4	220 KV Misa - Dimapur - I	19.08.08 & 20.08.08			Misa - Dimapur - I
5*	220 KV Misa - Dimapur - II	21.08.08 & 22.08.08			Misa - Dimapur - II
6*	400 KV Balipara - Misa - I	26.08.08 & 27.08.08			Balipara - Misa - I
7	400 KV Balipara - Misa - II	29.08.08 & 30.08.08			Balipara - Misa - II

\* Sl. No 2 subject to availability

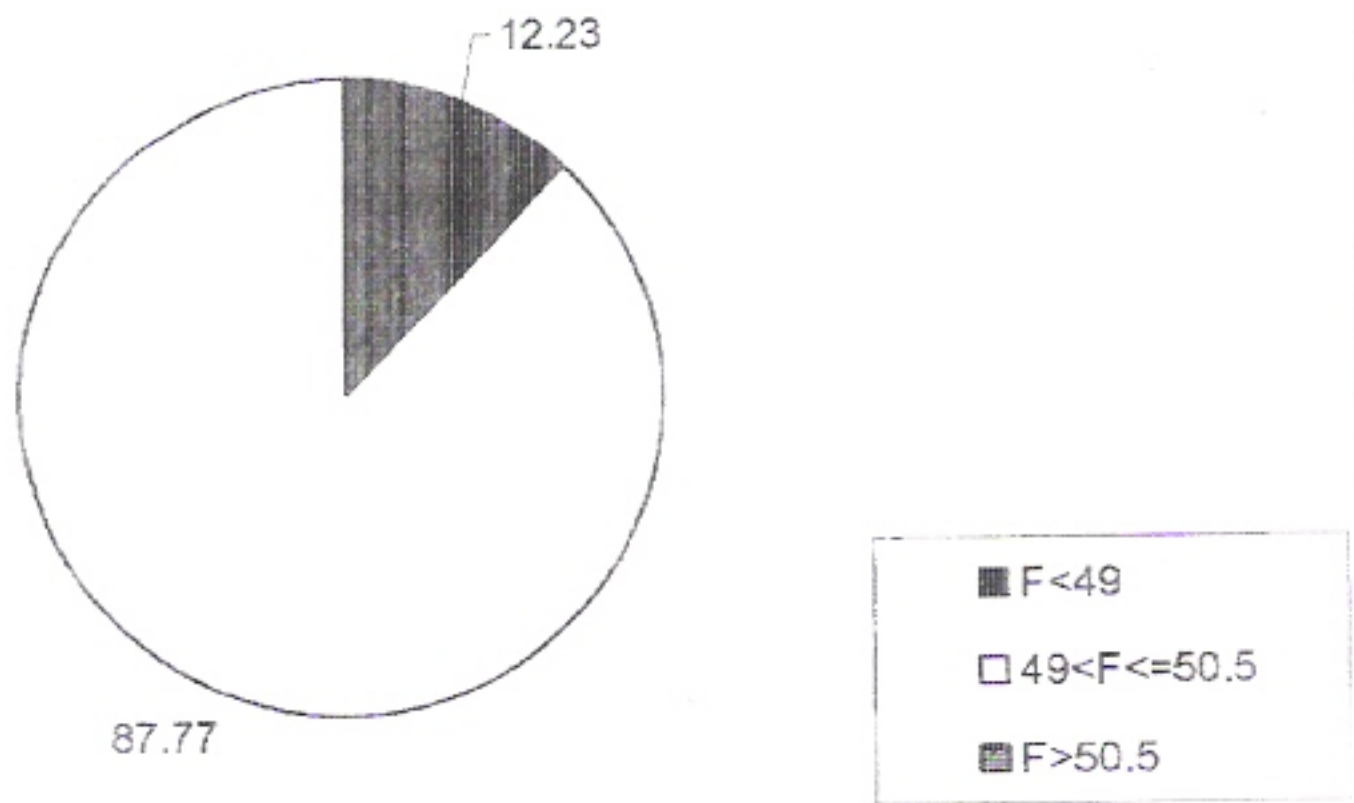
**S/D Program for POWERGRID sub-stations/Bays/ICTs/Reactors:-**

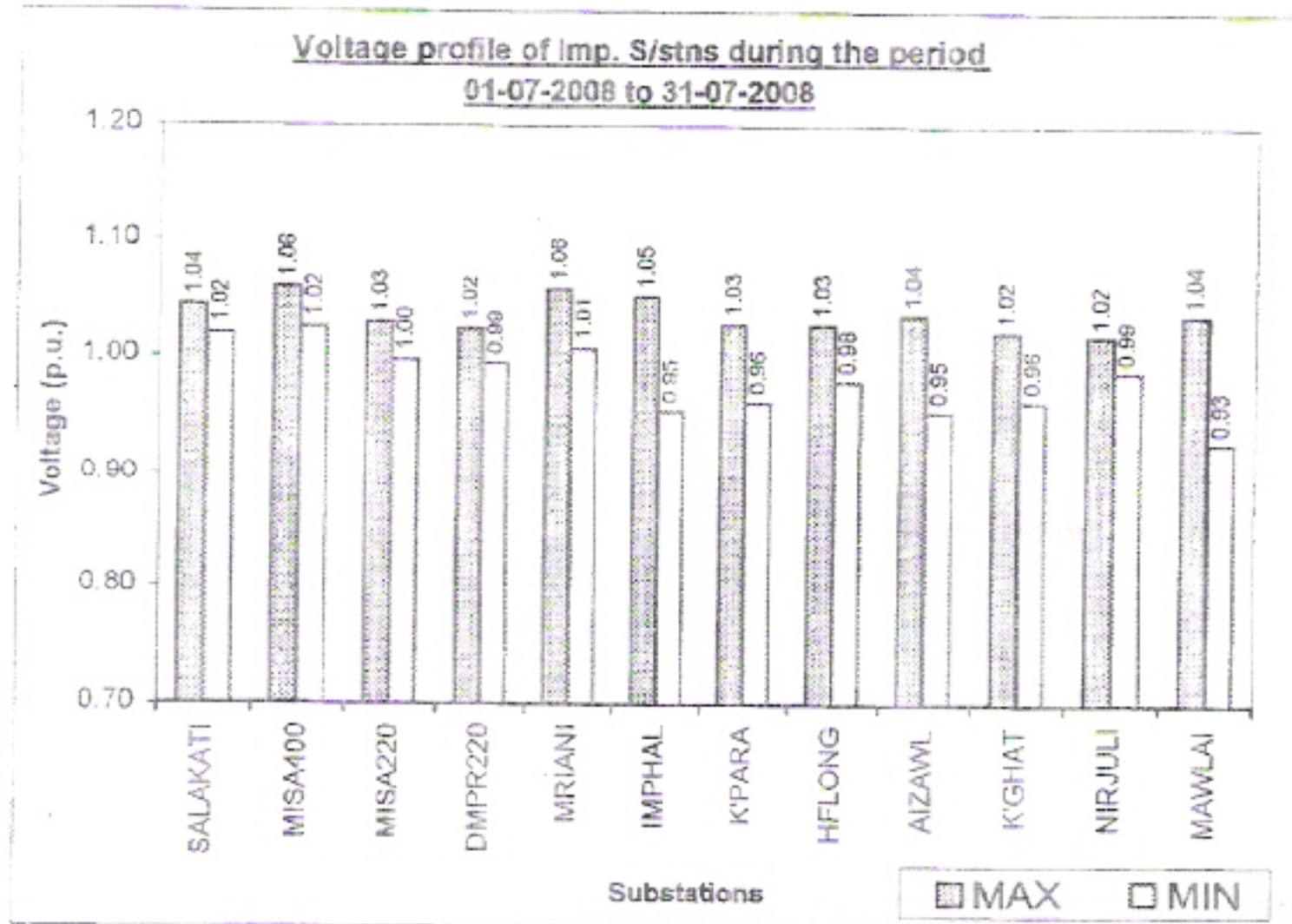
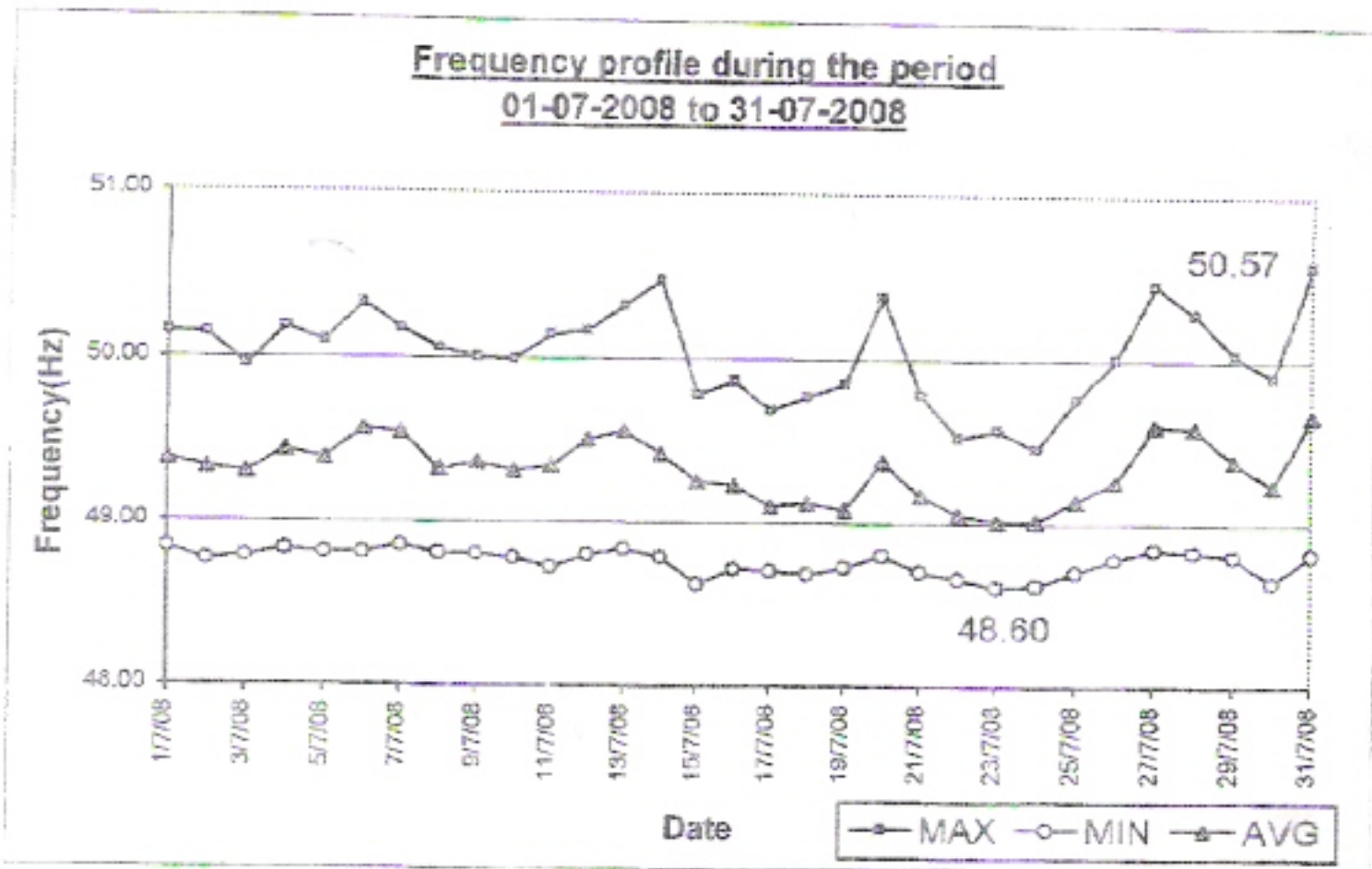
S/N	NAME OF SUB-STATION/BAYS/ICT/ REACTOR	S/D DATE	S/D TIME	PURPOSE	AREAS/FEEDERS AFFECTED
1	132kV Main Bus at Nirjuli	22.08.08 & 23.08.08	09:00hrs to 14500hrs	AMP	Nirjuli - Ranganadi & Gohpur - Itanagar

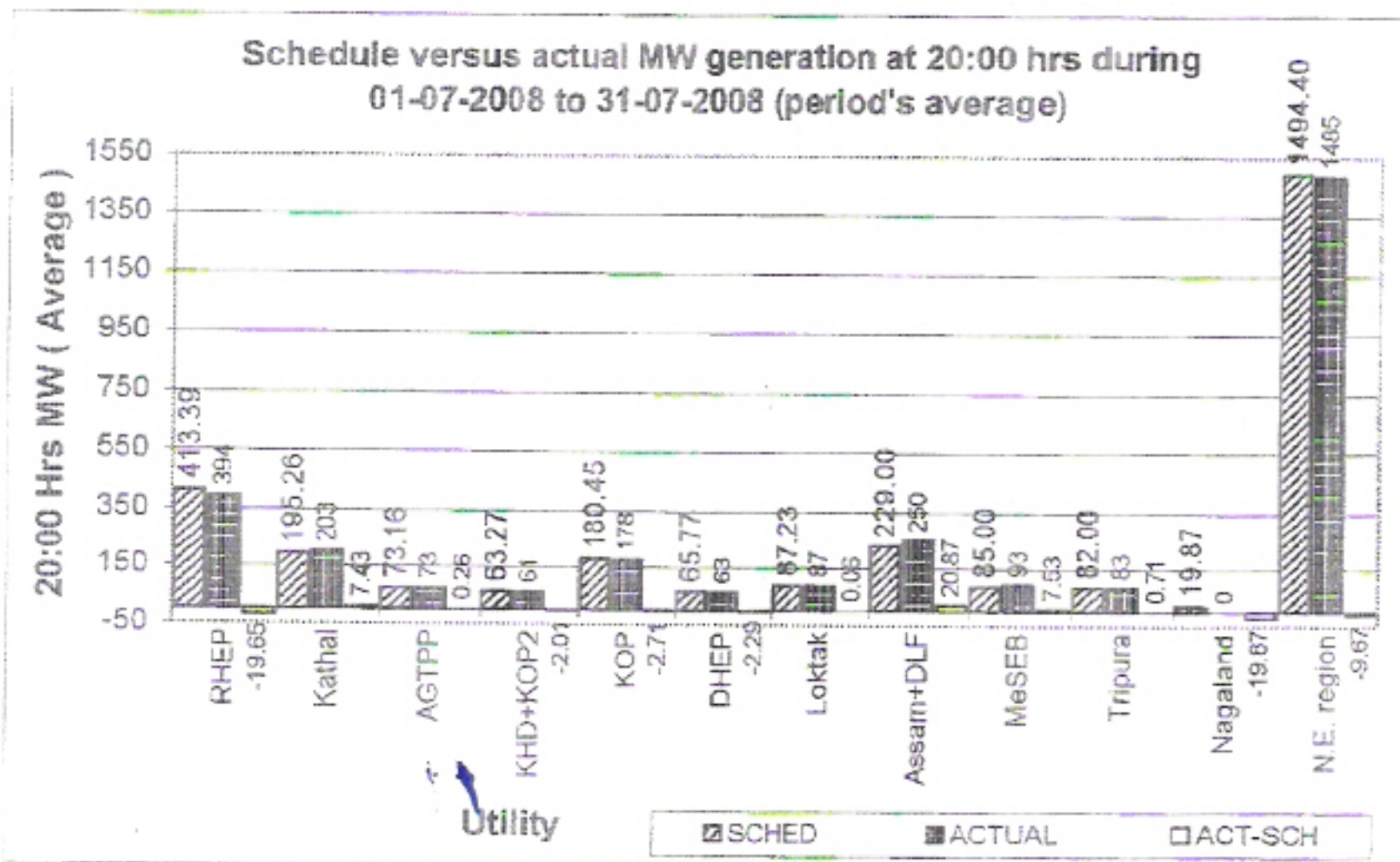
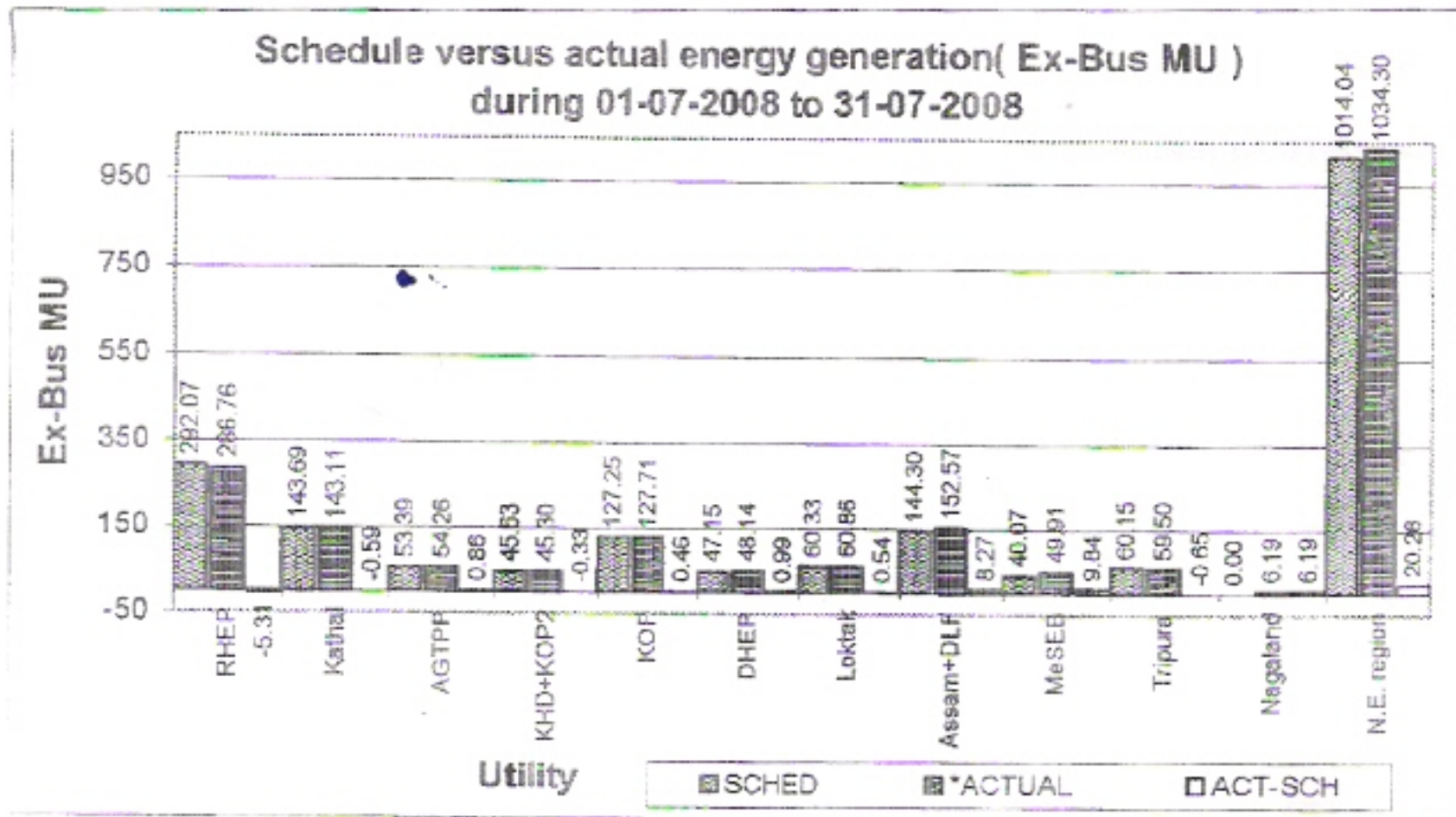
Duration of frequency in relevant ranges during  
01-07-2008 to 31-07-2008



Duration of frequency in IEGC ranges during  
01-07-2008 to 31-07-2008





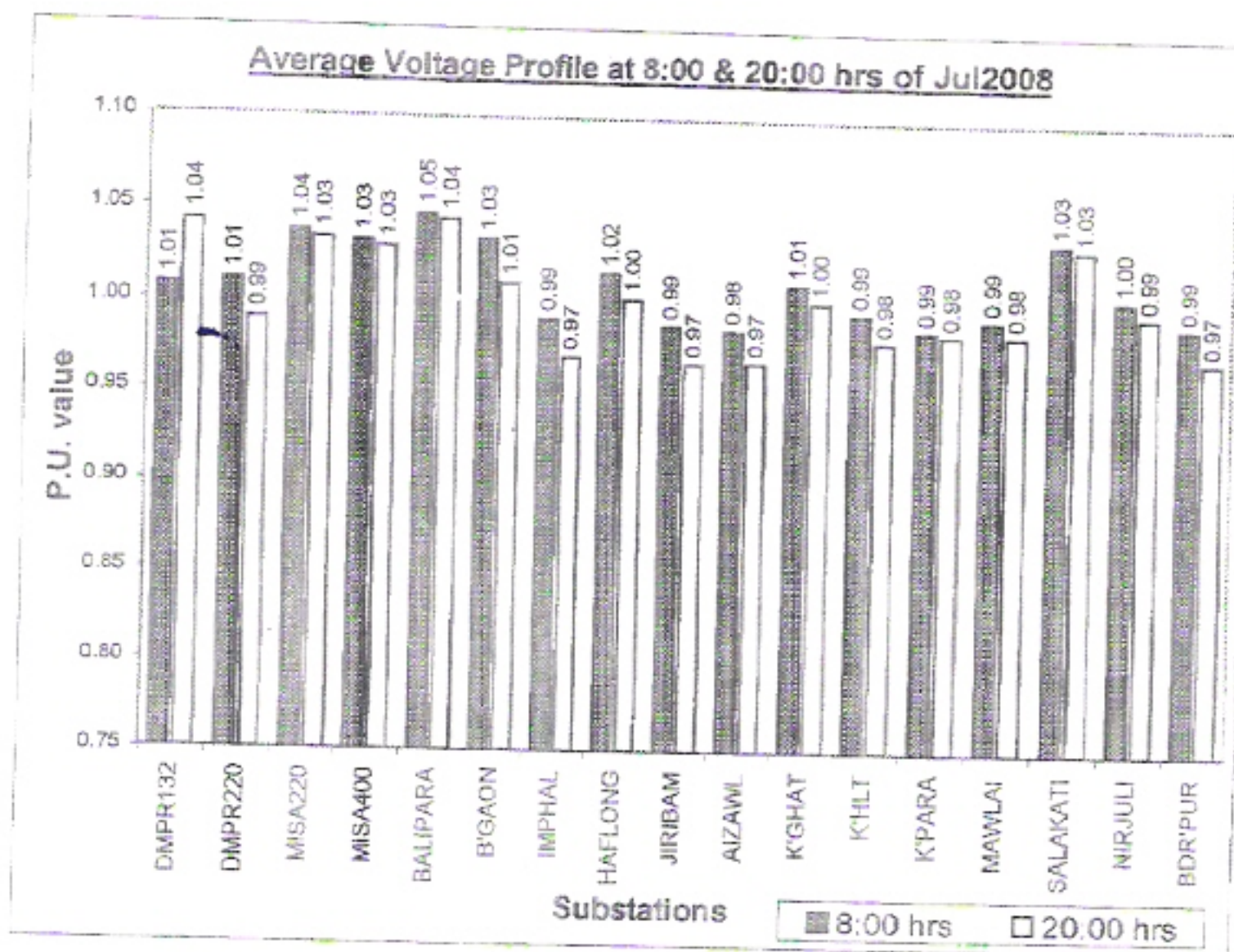


NOTE: Schedule corresponds to 20-21 hrs

Net Export to E. Region

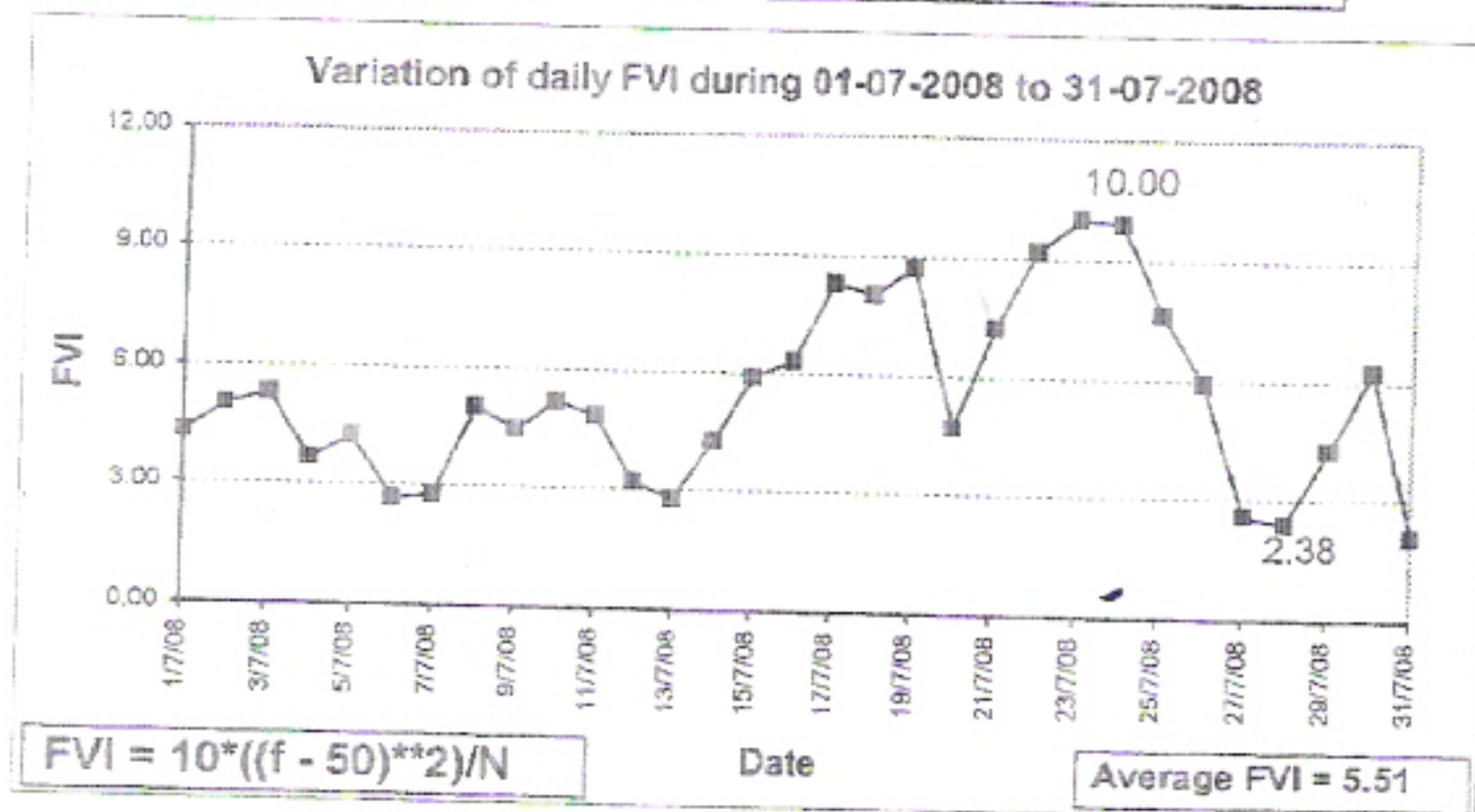
	Schedule	Actual	Act-Schd
MU	153.88	288.40	134.52
MW, 20:00 (average)	93.18	153.71	60.53

VIOLATION BY GENERATORS NOT REPORTED



**IEGC NORMS**

SL NO.	SYSTEM VOLTAGE	KV	PU
1	400KV	360KV-420KV	0.9-1.05
2	220KV	200KV-245KV	0.9-1.11
3	132KV	120KV-145KV	0.9-1.09



$$FVI = 10 * ((f - 50) ** 2) / N$$

## NORTH EASTERN REGIONAL LOAD DESPATCH CENTRE GRID INCIDENCE REPORT

**TO: ED (SO), NEW DELHI**

 Copy to: 1. Member Secretary, NERPC, Shillong;  
 3. S/I SLDC Kahilipara/NEHU/Agartala/Imphal/Dimapur/Aizawl/Itanagar

2. S/I, NPSD, New Delhi;

DATE OF OCCURANCE	07	07	2008	TIME OF OCCURANCE	23	54
-------------------	----	----	------	-------------------	----	----

**(A) PRE-FAULT CONDITION:**

SYSTEM FREQUENCY		49.65	Hz	NER EXPORT	339	MW
<b>GENERATION (MW) PRIOR TO INCIDENCE</b>						
TRIPURA	76	KHANDONG	43	KOPILI	185	
ASEB	222	RCNAGAR	74	LOKTAK	89	
MeSEB	93	K'GURI	236	DOYANG	62	
NAGALAND	19	RANGANADI	404	KOPILI STG # II	21	
<b>MAJOR LINE/MACHINE OUTAGE / OPEN</b>						
SL NO	NAME OF THE LINE/MACHINE		REMARKS			
1	132 kV Loktak - Jiribam I		Faulty since 0801 Hrs on 28.10.2002			
2	132 kV Panchgram - Failagool		Faulty since 1655 Hrs on 5.10.2000			
3	400 kV Balipara - Misa I		Open since 2116 Hrs on 07.07.08 (H/T on O/V)			
4	132 kV Karong - Kohima		Faulty since 0330 Hrs on 14.04.06			
5	132 kV Mariani - Mokokchung		Faulty since 1512 Hrs on 12.03.06			
6	Kopili Bus Coupler		Open since 1756 HRS on 07.07.08 (system requirement).			
7	132 kV Umium St I - Umium St III - I		Open since 2339 Hrs on 07.07.08 (system requirement).			
8	132 kV Umium St I - Umium St III - II		Open since 2339 Hrs on 07.07.08 (system requirement).			

**(B) DESCRIPTION OF INCIDENCE:**

NER system was running in synchronization with NEW Grid through 400 kV Bongaigaon - New Siliguri I & II & 120 kV Birpara - Salekati I & II lines.

At 2354 Hrs, B phase CT of 220 kV Misa - Samaguri I at Samaguri end burst. Due to this incidence, all outgoing feeders from Samaguri tripped instantaneously & 400/220 kV, 315 MVA ICT at Misa overloaded & tripped (Relay - 67AX & 50 AL). 220 kV Misa - Kathalguri & 220 kV Misa - Mariani lines tripped immediately on over voltage. This resulted into isolation of Part of Assam, Part of Meghalaya, Nagaland, Manipur, Mizoram, Tripura from Main Grid of NER & power interruption occurred in Part of Assam, Part of Meghalaya, Nagaland, Manipur & Mizoram due to Load - Generation mismatch. However, Tripura system alongwith R C Nagar Generation & Upper Assam system alongwith Kathalguri Generation survived.

System progressively restored at 0026 HRS on 08.07.08.

(C) STATES AFFECTED :		(D) POWER STATIONS AFFECTED (GENERATION LOSS)			
AR. PRADESH	Nil	KATHALGURI	170 MW	LOKTAK	Full (89 MW)
ASSAM	Partial (Load - 759 MW to 422 MW)	R.C. NAGAR	50 MW	DOYANG	Full (62 MW)
MANIPUR	Full (Load - 68 MW to Nil)	KOPILI	Full (185 MW)	MeSEB	27 MW
MEGHALAYA	Partial (Load - 179 MW to 24 MW)	KHANDONG	Full (43 MW)	KOPILI STAGE # II	Full (21 MW)
MIZORAM	Full (Load - 24 MW to Nil)	ASEB	28 MW	NAGALAND	Full (19 MW)
NAGALAND	Full (Load - 42 MW to Nil)	RANGANADI	Nil		
TRIPURA	Separated with R C Nagar Generation	TRIPURA	Nil		

To, MS, NERPC, Shillong  
for kind intimation pl.

3/1/08  
08.07.08