



भारत सरकार
Government of India
उत्तर पूर्वी क्षेत्रीय विद्युत समिति

Phone: 0364-2520034
: 0364-2520050
FAX : 0364-2520030

North Eastern Regional Power Committee
"Meghalaya State Housing Financing Cooperative Society Ltd,
Nongrim Hills Shillong – 793 003

No. 103/2/NERPC/OCC/2008/6052-86

Date: 14th March, 2008

To,

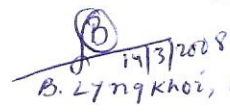
1. Member (Tech), Assam State Electricity Board, Bijuli Bhawan, Paltan Bazar, Guwahati-781 001
2. Member (Tech), MeSEB, Lumjingshai, Short Round Road, Shillong – 793 001
3. Chief Engineer (WE Zone), Department of Power, Govt. of Arunachal Pradesh, Itanagar- 791 111
4. Chief Engineer (EE Zone), Department of Power, Govt. of Arunachal Pradesh, Itanagar- 791 111
5. Chief Engineer (P), Department of Power, Govt. of Nagaland, Kohima – 797 001
6. Chief Engineer (P), Electricity Department, Govt. of Manipur, Keishampat, Imphal – 795 001
7. Chief Engineer (P&E), Department of Power, Govt. of Mizoram, Aizawl – 796 001
8. General Manager, TSECL, Agartala – 799 001
9. General Manager, NERLDC, Dongtiah-Lower Nongrah, Lapalang, Shillong -793 006
10. AGM (O&M), NERTS, PGCIL, Dongtiah-Lower Nongrah, Lapalang, Shillong -793 006
11. ED (O&M), NEEPCO Ltd., Brookland Compound, Lower New Colony, Shillong-793003
12. ED (Commercial), NEEPCO Ltd., Brookland Compound, Lower New Colony, Shillong-793003
13. ED (O&M), NHPC, NHPC Office Complex, Sector-33, Faridabad, Haryana-121003
14. ED (Commercial), NHPC, NHPC Office Complex, Sector-33, Faridabad, Haryana-121003
15. Vice President, PTCIL, 2nd Floor, NBCC Tower, 15, Bhikaji Cama Place, New Delhi
16. Member Secretary, EREB, 14 Golf Club Road, Tollygunge, Kolkata-700033
17. Chief Engineer, GM Division, Central Electricity Authority, New Delhi – 110016

Sub: Minutes of the 24th OCC Meeting held on 11th March, 2008 at Shillong.

The Minutes of the 24th OCC Meeting of NERPC held on 11.03.08 at "NERLDC Conference Hall" Lapalang, Shillong is enclosed for favour of kind information and further necessary action please.

Encl: As above.

भवदीय / Yours faithfully,


B. L. N. Khori, Asstt Secretary
f सदस्य सचिव / Member Secretary

Copy to:

1. SA to Member(GO&D), CEA, Sewa Bhawan, R.K. Puram, New Delhi – 110066
2. Chief Engineer, AEGCL, Bijuli Bhavan, Guwahati - 781001
3. Chief Engineer, APGCL, Bijuli Bhavan, Guwahati - 781001
4. MD, CA DISCOM, Bijuli Bhavan, Guwahati - 781001
5. MD, UA DISCOM, Bijuli Bhavan, Guwahati - 781001
6. MD, LA DISCOM, Bijuli Bhavan, Guwahati - 781001
7. CGM (LDC) SLDC Complex, AEGCL, Kahelipara, Guwahati-781019.
8. S.E. (Trans. & Dist), MeSEB Lumjingshai, Short Round Road, Shillong – 793 001
9. Head of SLDC, MeSEB, Lumjingshai, Short Round Road, Shillong – 793 001
10. Head of SLDC, Department of Power, Govt. of Arunachal Pradesh, Itanagar- 791 111
11. A.C.E. (Gen & Trans), Department of Power, Govt. of Nagaland, Kohima – 797 001
12. Head of SLDC, Department of Power, Dimapur, Nagaland
13. A.C.E. (Power-I), Electricity Department, Govt. of Manipur, Keishampat, Imphal – 795 001
14. Head of SLDC, Electricity Department, Govt. of Manipur, Keishampat, Imphal – 795 001
15. S.E. (Trans & Dist), Department of Power, Govt. of Mizoram, Aizawl – 796 001
16. Head of SLDC, Department of Power, Govt. of Mizoram, Aizawl – 796 001
17. Head of SLDC, TSECL, Agartala – 799 001
18. Chief Engineer, Loktak HEP, Vidyut Vihar, Komkeirap, P.O. Loktak, Manipur - 7950124

North Eastern Regional Power Committee

Minutes of 24th Operation Coordination Committee Meeting

Date: 11/03/2008

**Venue: "NERLDC Conference Hall", Shillong
(Hosted By Manipur)**

In the absence of Member Secretary, NERPC, Shri B. Lyngkhoi, Asstt. Secretary welcomed the participants to 24th. OCC meeting. He thanked Department of Power, Govt. of Manipur for hosting the meeting and requested Manipur representative to continue to participate in future meetings also so that important issues could be resolved. He briefed the members about agenda of the meeting and expressed hope that the meeting would yield fruitful results. He then requested Shri L.K. Kanungo, GM, NERLDC to chair the meeting.

GM, NERLDC welcomed all participants to the meeting and expressed satisfaction at the large no. of participation. He stated that absence of Tripura and Nagaland might be due to recent Assembly elections held at those States and hoped that next meeting would have participation of all NER Constituents. He called upon the members to deliberate positively in the meeting to arrive at positive outcome.

List of participants of the meeting is at Annexure-I.

The meeting started with a presentation by NERLDC on the performance of NER Grid during the month of February, 2008. Sh. S.K. Saha, Dy. Manager, NERLDC made the presentation and highlighted facts and figures of the month under review. Constituents appreciated the presentation and requested NERLDC to continue with similar presentation in every meeting. GM, NERLDC stated that NERLDC is making presentation in OCC, Commercial, TCC meetings and this would continue.

Then the Agenda items were taken up for discussion.

1. Confirmation of the minutes of 23rd. Operation Coordination Committee meeting held at Shillong

- a) Representative of NEEPCO clarified the factual position of the operation of AGTPP Station on the dates mentioned in the minutes of following portion :

QUOTE

AGTPP has been observed that on 20.01.2008 while their Declared Capacity was 84 MW then they suddenly revised to 76 MW. But when the R.C. Nagar – Kumarghat line was shutdown they increased their DC to 85 MW which was not proper. The same was repeated on 02.02.2008. NERLDC has advised not to repeat again otherwise they will take up the matter. NEEPCO representative has informed that they will take up the case with the officers of AGTPP.

UNQUOTE

NEEPCO representative, Sh. B.R. Bhattacharjee stated that generation of AGTPP being linked to availability of Gas supply; they had little control in playing with DC. He stated the following:

1. Revision of DC prior to S/D was duly intimated by NEEPCO on previous night with sole consideration of gas availability.
2. S/D was availed in AGTPP-Kumarghat at a very short notice (received by them at 01:00 Hrs. on the same day) although there was no approval of same in OCC.
3. Downward revision of DC just after return of S/D was due to the fact that opening of gas valve would take some time for resumption of normal gas supply. Once the procedure was complete, DC was revised upwards by NEEPCO back to normal.

Constituents expressed satisfaction at the clarification given by NEEPCO. Regarding S/D of AGTPP-Kumarghat, it was checked and found that although same was approved, it was inadvertently not reflected properly in minutes of 22nd OCC meeting thereby creating confusion.

The following were resolved:

1. Shutdown programme approved in OCC should be clearly spelt out in the meeting, noted by all members and subsequently recorded correctly in minutes and same should be communicated to all Constituents.
 2. Shutdown of 132 KV AGTPP-Kumarghat line, whenever availed, should be returned within 1600 Hrs. and subsequently four (04) to six (06) time blocks time would be taken by NEEPCO to revert back to normal DC of AGTPP. Downward revision of DC during this intermittent period would be allowed to AGTPP.
- b) Regarding Item No. 6 of minutes of 23rd. OCC meeting, representative of ASEB opined that the item should be recorded as "CT could not be replaced immediately and informed that they would look into the matter" instead of "due to fund constraint" and "ASEB was not keen to replace the CT".
- c) Regarding Item No. 7 of minutes of 23rd. OCC meeting, representative of ASEB informed that the line should be read as 220 KV BTPS-Agia-Sarusajai II instead of Ckt-I which is to be commissioned and therefore the question of restoration as recorded does not arise.

The minutes of 23rd. OCC meeting was taken as confirmed with above amendments / clarifications.

2. Restricted drawal of Power from Khliehriat (PGCIL) Substation to MeSEB

GM, NERLDC requested MeSEB to clarify the agenda item.

Representative from MeSEB explained that they had two points to highlight:

- a) They have connectivity with NER Grid from two sides viz. from Khliehriat (POWERGRID) and from Sarusajai/Kahelipara (ASEB) and they draw from these two sides to meet their demand. Drawal of MeSEB from ASEB side attracts a transmission tariff / wheeling charge payable by them to AEGCL and also more drawl from ASEB side causes overloading in some of their intra-State lines. In view of this, MeSEB would like to draw more Power from Khliehriat (PG) side and requested NERLDC to arrange for same.
- b) Whenever there is some occurrence in 132 KV Pocket (for example recent outage of Khandong/Kopili machines due to law and order problem), drawal of MeSEB from Khliehriat side gets restricted drastically. MeSEB requested that there should be some ratio for such curtailment and MeSEB drawal should not be curtailed in an unfair manner.

The matter was deliberated in detail. NERLDC presented some graphs showing MeSEB drawal from the two sides during peak-off-peak.

The following were resolved:

- A. In an interconnected Grid, Power flow would depend upon load, generation, line parameters. MeSEB being interconnected to NER Grid from both sides, ratio of flow to MeSEB would be governed by these factors alone and can not be controlled externally. Regarding, transmission / wheeling charges payable by MeSEB to AEGCL it was felt by OCC that MeSEB should take up same bilaterally with Assam and as such it has already been agreed in 4th. Special TCC meeting not to have any transmission tariff for transfer of Power using State owned lines.
MeSEB agreed to same.
- B. GM, NERLDC assured MeSEB that in case of any shortage / occurrence in 132 KV pocket, distribution of available Power to the concerned Constituents would be done in a transparent, fair and equitable manner.

MeSEB once again expressed their dis-satisfaction on distribution of Power during shortage and felt that same should be done in fair way as assured.

3. Status of 132kV Mokokchung-Mariani Line -- NERLDC

Representatives from ASEB informed that the line is still out of service.

Asst. Secretary, NERPC informed the members that a letter has been received from Nagaland mentioning that the fault had been rectified and the line charged on 10.02.2008. The line is presently idle charged from Mokokchung end.

However, representatives from ASEB informed that the line tripped one and half hour after being charged and no information regarding the current status is available.

It was decided that Nagaland would be asked to furnish details regarding the present status of the line.

4. Generation Planning - NERLDC

The daily energy availability of ISGS shall be as follows:

(i) Khandong - 0.13 MU, (ii) Kopili stage-II - 0.072 MU, (iii) Kopili - 2.3MU, (iv) Doyang - 0.24 MU, (v) RHEP - subject to water inflow (vi) Loktak - 0.936 MU, (vii) AGBPP & AGTPP - subject to availability of gas supply.

5. Putting Line Reactor/Bus Reactor(RHEP/Balipara) when line is not in service - NERLDC

GM, NERLDC informed the members that a team comprising of representatives from NERPC, NERLDC, POWERGRID and NEEPCO had visited RHEP station to explore the option of utilizing the line reactor at RHEP as bus reactor. The team agreed for an experiment to this effect and the same was conducted w.e.f. 1250 hrs of 8th March, 2008. The profile of bus voltages at RHEP, Balipara and Misa was also displayed to the members.

It was found that reduction in voltage level was of the order of 5-8 kV at Ranganadi HEP, 8-10k V at Balipara S/s and 4-5kV at Misa S/s.

GM, NERLDC thanked NEEPCO for the initiative and further informed that this being a temporary measure, in due course, as decided by the team members and communicated in the MOM dated 07.03.08 by NERPC, switching reactors will be installed at Balipara S/s due to space constraints at RHEP to address this problem.

However, representatives from NEEPCO informed that during this exercise, few inter-locks in the control circuit had to be by-passed in violation to the approved scheme and were apprehensive about any consequential equipment damage in the event of which NEEPCO should be compensated.

In this context, Asst. Secretary, NERPC read out the minutes of discussion at RHEP whereupon it was noted that matter will be reviewed in case of any operational problem. Asst. Secretary also suggested that the detailed expenditure/cost can be worked out after technical observation. It was agreed that the present arrangements and modifications at RHEP in this context will be examined in the coming PCC and System Studies Committee of NERPC and appropriate action would be taken.

6. Outage planning for generator and transmission elements - NERLDC

Refer to Annexure-II, III & IV

GM, NERLDC enquired about the law and order situation at Kopili HEP. NEEPCO informed that the matter has been taken up with the highest authority and NERPC Secretariat has also taken up the issue with GM Division, CEA, Delhi. The situation, though tense, is slowly improving. However local authorities have still not given clearance for free movement in the area.

NEEPCO informed that even on the day of the untoward incident the station was operating and efforts are on to keep the station operational under any adverse situation.

The forum expressed their sincere appreciation for the spirit shown by NEEPCO.

7. Review of grid performance in the previous month

Refer to Annexure- V & VI.

Grid performance was already reviewed at the beginning through PowerPoint presentation. Hardcopy of the frequency profile, frequency variation index, voltage profile and schedule and actual generation of the previous month was distributed to the members.

8. Grid disturbances in the previous month (February, 2008)

Representatives from NERLDC informed that there was a grid disturbance on 04.02.2008. Members agreed to refer the issue to the coming PCC meeting of NERPC on 26.03.2008.

9. Requirement of data at NERLDC for preparation of various reports - NERLDC

Refer to Annexure - VII

Representatives from NERLDC requested that hourly generation reports sent by generating stations may be discontinued as they are no longer required. NERLDC further requested that monthly generation data from constituents are required in a timely and consistent manner by the 1st day of next month to enable preparation of monthly Power Supply Position report to be sent to CEA. All the Constituents were also requested to send weekly even report for preparation of weekly report by NERLDC.

NEEPCO representatives informed that event reports being sent from ISGSs of NEEPCO is sufficient for the purpose. NERLDC informed that event reports are being received from all generating stations except RHEP and asked NEEPCO to look into the matter.

10. Any other item

Representatives from NEEPCO informed that PLCC links are out of service most of the time and requested NERTS for periodical check-up of the same so that PLCC links may be always healthy and operational.

NERTS informed that since the RTUs are going to be strengthened, dependency/requirement of PLCC will be reduced in near future. Hence the issue of periodical check of PLCC may be kept in abeyance.

11. Date and venue of next OCC meeting

Asst. Secretary, NERPC informed the members that the next OCC meeting is likely to be held on 09.04.2008 at NERPC Conference Hall, Shillong and as per turn Meghalaya will be the host. The exact date and venue will be intimated in due course.

LIST OF PARTICIPANTS IN THE 24th O.C.C MEETING OF NERPC

S. N.	NAME OF PARTICIPANT	DESIGNATION
ARUNACHAL PRADESH		
1.	W. Rehman	E.E. (E)
ASEB		
1.	H. Hararika	Deputy General Manager, SLDC
2.	A.K. Saikia	Sr. Manager, SLDC
MANIPUR		
1.	H. Shati Kumar	E.E
2.	K.Jila Singh	E.E
MEGHALAYA		
1.	T.Passah	S.E., SLDC
2.	T. Gidon	A.E.E., SLDC
3.	D.J. Lyngdoh	A.E.E, SLDC
MIZORAM		
1.	V. Rodingliana	E.E
2.	H. Lalnunsanga	A.E.E
NAGALAND		
TRIPURA		
NEEPCO		
1.	B.K.Chakraborty	Sr. Manager,
2.	P. Konwar	Sr. Manager (E)
3.	Bhaskar Goswami	Sr. Manager
4.	A.K. Goswami	Sr. Manager
5.	B.R. Bhattacharya	Manager, AGBP
6.	Peter Lalthanmuana	Deputy Manager
NERLDC		
1.	L.K. Kanungo	GM
2.	N.R. Paul	Chief Manager
3.	R. Sutradhar	Chief Manager
4.	S.K.Saha	Deputy Manager
NERTS (PGCIL)		
1.	Utpal Sharma	Chief Manager
NHPC		
Trading Companies		
NERPC		
1.	B. Lyngkhoi	Assistant Secretary
2.	Lalrinsanga	E.E. (Coml.)
3.	G. Medhi	A. E

Annexure – II**Proposed Shut down Program of POWERGRID Elements for the month of March, 08**

S/N	NAME OF T/L	S/D DATE	S/D TIME	PURPOSE	FEEDERS AFFECTED
1	220 KV Misa-Kopili - II	26.03.08 & 27.03.08	08:00hrs to 16:00hrs	Replacement of defective CT	Misa -Kopili - II
2	132 KV Gohpur - Itanagar	18.03.08		AMP	Gohpur - Itanagar

****Note:** All the associates bays maintenance would be done during the S/D of respective Transmission lines

S/D Program for POWERGRID sub-stations/Bays/ICTs/Reactors:-

S/N	NAME OF SUB-STATION/BAYS/ICT/ REACTOR	S/D DATE	S/D TIME	PURPOSE	AREAS/FEEDERS AFFECTED
1	400 KV, Bus - A at Misa	14.03.08 & 15.03.08	08:00 hrs to 16:00 hrs	AMP	400 KV Bus - A
2	400 KV Bus - B at Misa	18.03.08 & 19.03.08	08:00 hrs to 16:00 hrs	AMP	400 KV Bus-B
3	33 KV Incomer Bay and 1 MVA Transformer at Bongaigoan.	25.03.08 & 26.03.08	09:00 hrs to 15:00 hrs	AMP	2 X 25 MVAR tertiary reactor & 1 MVA transformer
4	25 MVAR Tertiary Reactor - I at Balipara	14.03.08 & 15. 3.08	09:00 hrs to 16:00 hrs	Tan delta measurement	Reactive power of 25 MVAR
5	25 MVAR Tertiary Reactor - II at Balipara	17.03.08 & 18.03.08			Reactive power of 25 MVAR
6	25 MVAR Tertiary Reactor - III at Balipara	19.03.08 & 20.03.08			Reactive power of 25 MVAR

Annexure – III

**A. Proposed Shut down Program of Manipur Elements for the month of March, 08
For termination of Halflong Feeder at Loktak Ckt - I Bay**

S/N	NAME OF T/L	S/D DATE	Status of Feeder	Remarks
1	Dismantling/Removal of Bay equipment of Halflong Feeder & Loktak Ckt - I. Removal of conductor of span H1 - G and stringing the span H1 - L1	12.03.08	Shutdown of Halflong Feeder	H1 - Dead End of Halflong Feeder. L1 Dead End of Loktak Ckt - I. G - Gantry
2	Interchanging of Bay equipment of Halflong Feeder with that of Loktak Ckt - I	13.03.08	- Do -	
3	Testing of equipment and charging of the lines	14.03.08	- Do -	

**B. Proposed Shut down Program of Manipur Elements for the month of March, 08
For shifting of Badarpur Feeder**

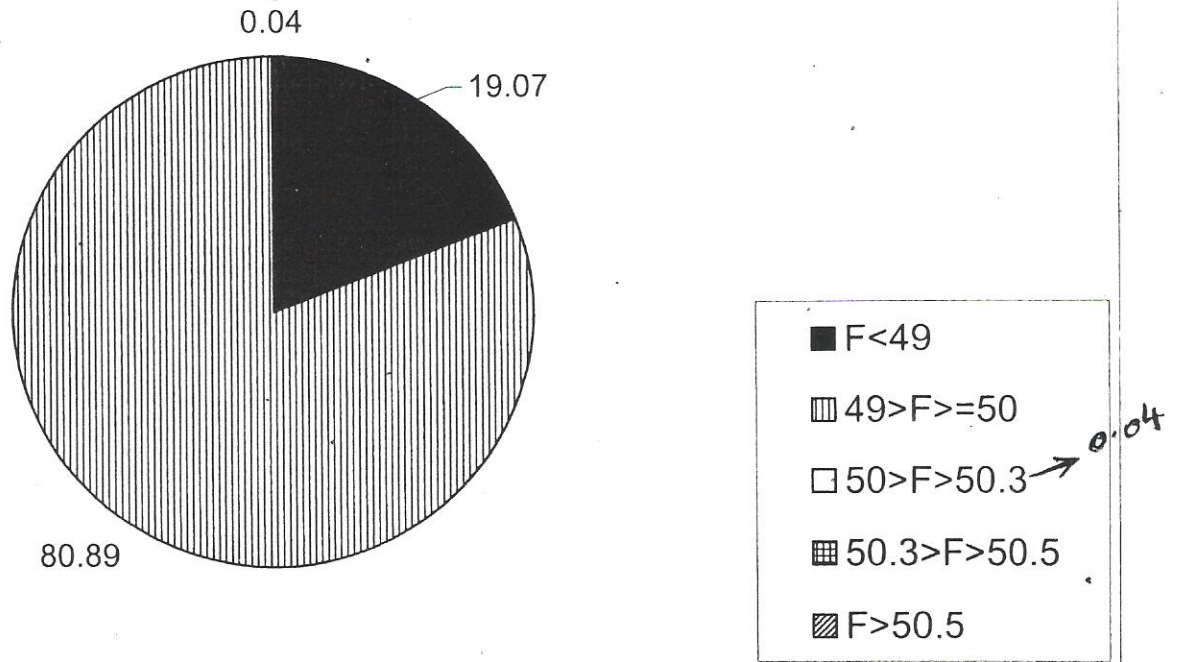
S/N	NAME OF T/L	S/D DATE	Status of Feeder	Remarks
1	Stringing the span DS1 - DS2.	22.03.08	Shutdown of Badarpur Feeder not required.	B1 - Dead End of Badarpur Feeder. B2 & B3 - other affected towers
2	Removal of conductors of the Span B1 - B2 & B2 - B3. Stringing the Spans B1 - DS2 & DS1 - B3	23.03.08	Shutdown of Badarpur Feeder	DS1 & DS2 - towers for shifting the line.

Annexure – IV

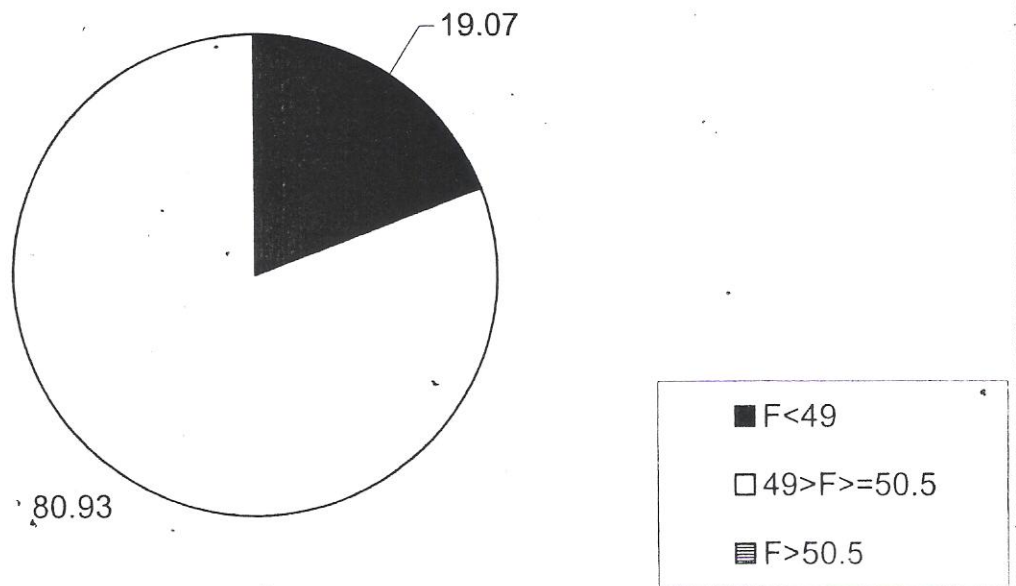
Proposed Shut down Program of Generating Stations for the month of March, 08

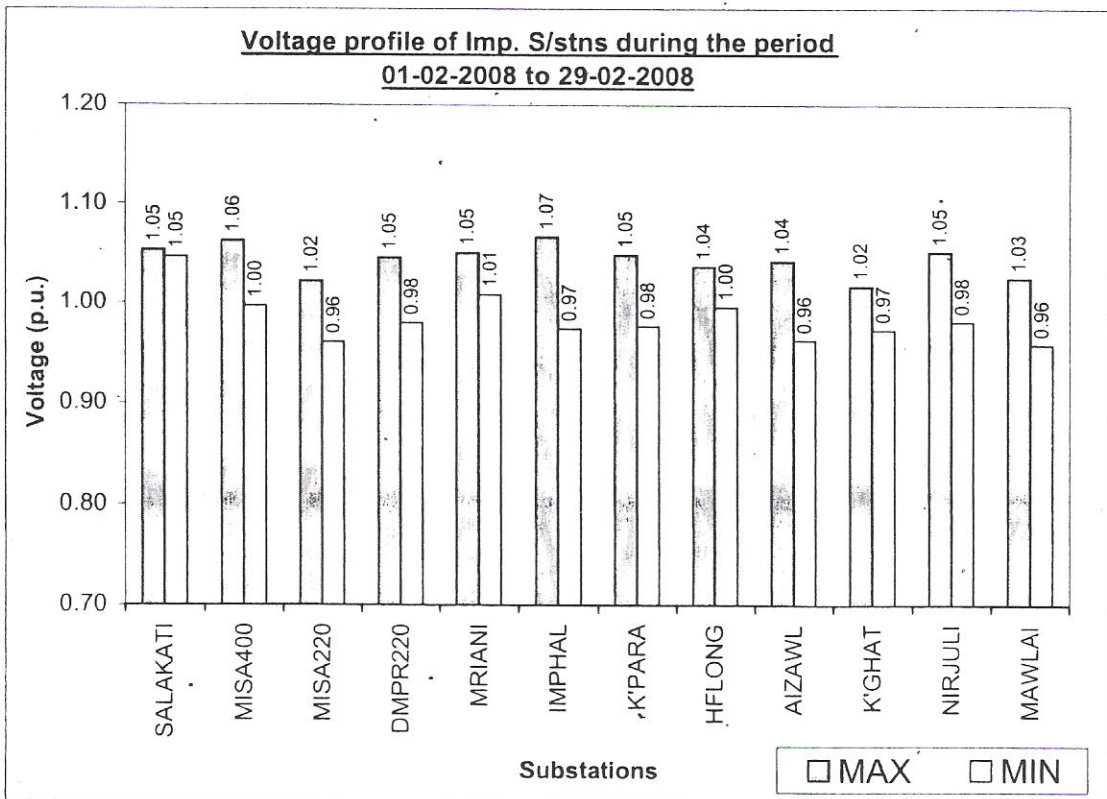
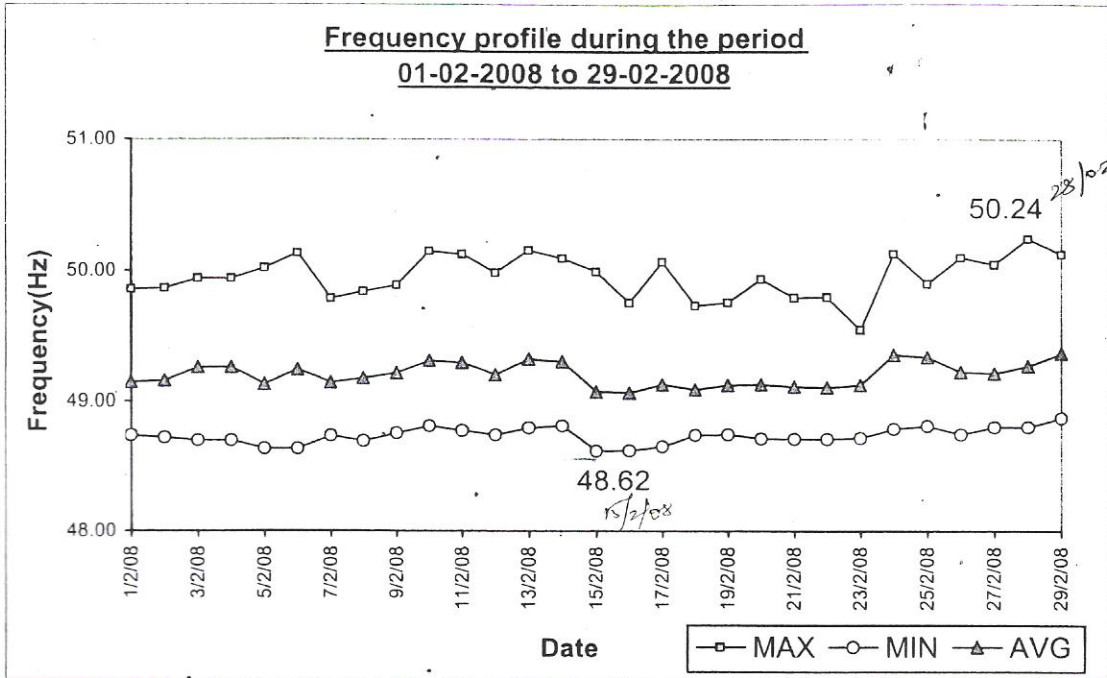
S/N	NAME OF UNIT GENERATING UNIT	SHUTDOWN DATE
1	Kopili Unit I & II.	Both Units up to 15.05. 2008
2	Khandong Unit - I	From 15.03.2008 to 15.04.2008
3	Doyang Unit - III	From 09.03.2008 to 21.03.2008
4	Khandong Complete plan	From 22.03.2008 to 25.03.2008
5	Kopili Unit III & IV	Daytime Shutdown (08:00 Hrs - 16:00 Hrs) From 25.03.2008 to 25.04.2008

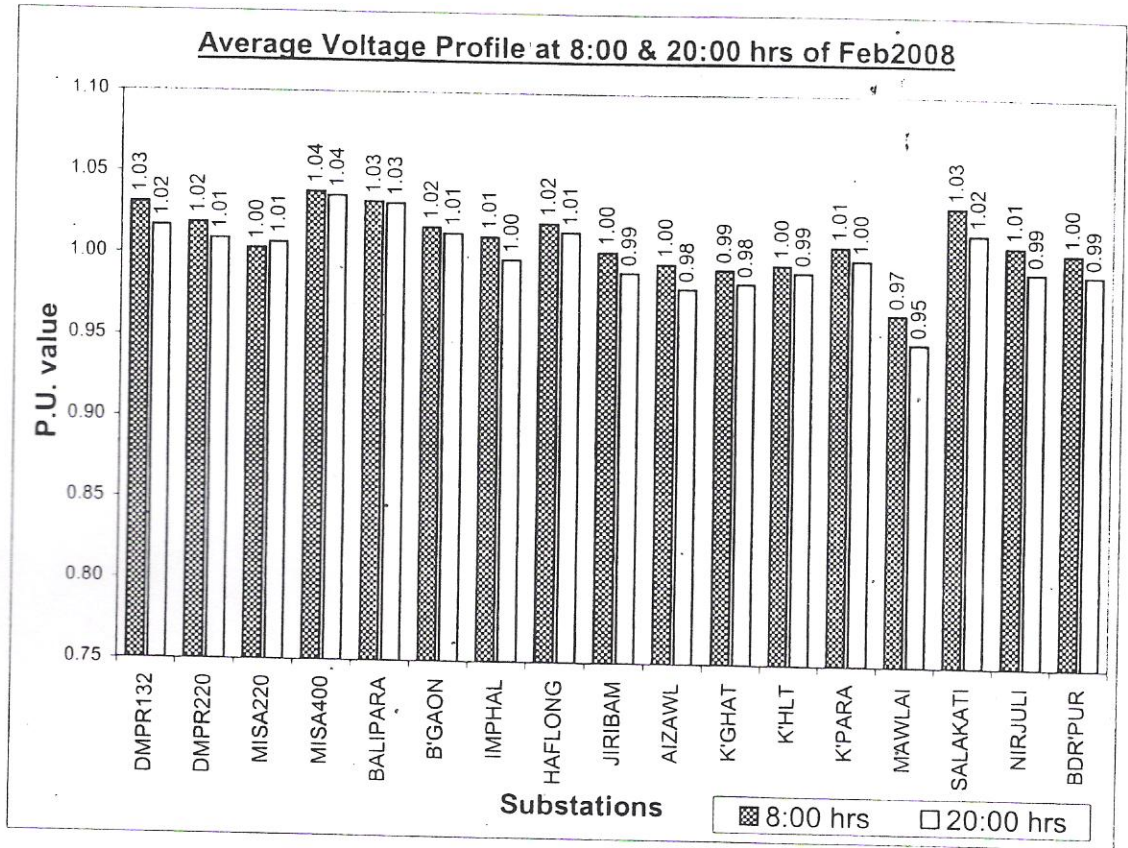
**Duration of frequency in relevant ranges during
01-02-2008 to 29-02-2008**



**Duration of frequency in IEGC ranges during
01-02-2008 to 29-02-2008**

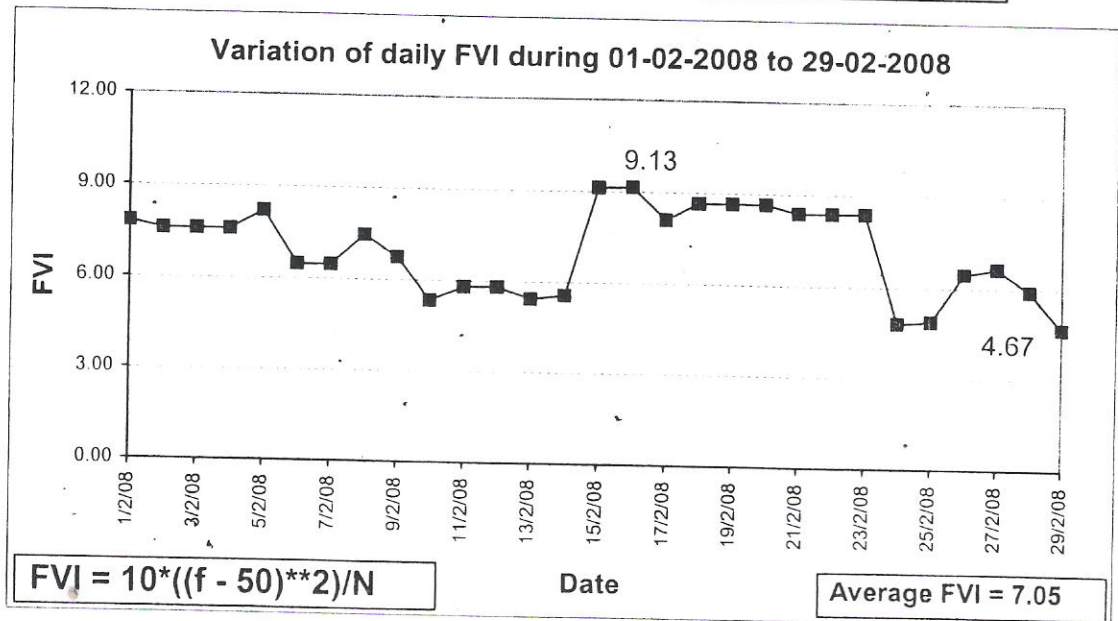




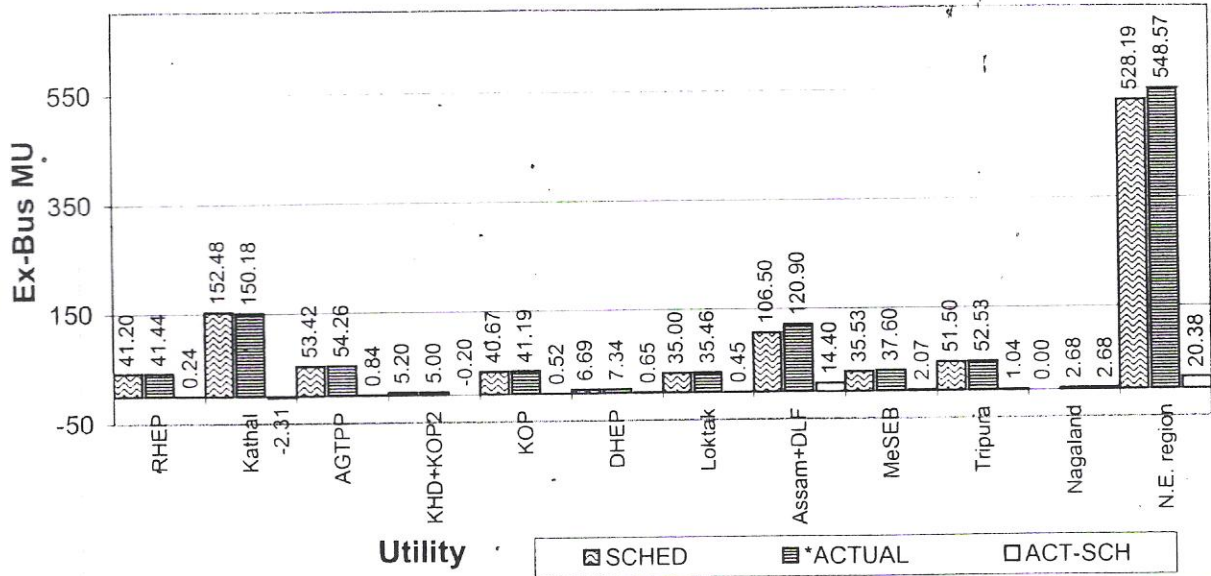


IEGC NORMS

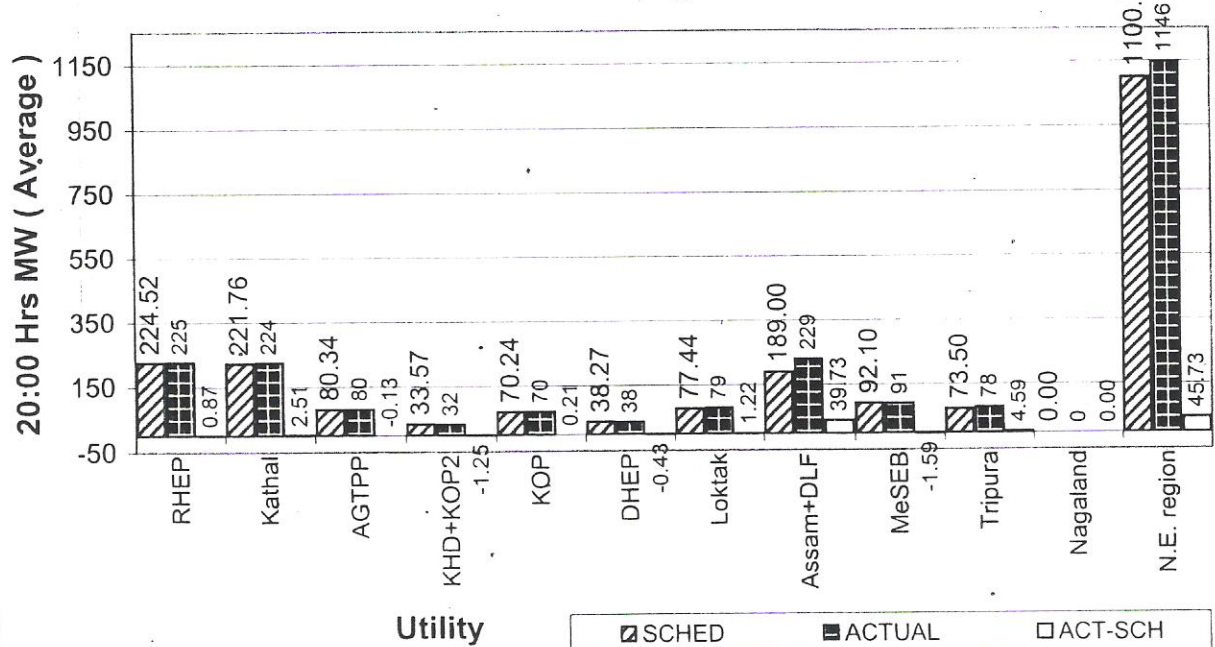
SL NO.	SYSTEM VOLTAGE	KV	PU
1	400KV	360KV-420KV	0.9-1.05
2	220KV	200KV-245KV	0.9-1.11
3	132KV	120KV-145KV	0.9-1.09



**Schedule versus actual energy generation(Ex-Bus MU)
during 01-02-2008 to 29-02-2008**



**Schedule versus actual MW generation at 20:00 hrs during
01-02-2008 to 29-02-2008 (period's average)**



NOTE: Schedule corresponds to 20-21 hrs

Net Export to E. Region

	Schedule	Actual	Act-Schd
MU	-60.91	-22.76	38.15
MW, 20:00	-127.36	-64.34	63.02
(average)			

VIOLATION BY GENERATORS NOT REPORTED

Actual Drawal of MeSEB from Khliehriat (PGCIL) S/S on 13th February 2008

Time	MeSEB						Mizoram		Tripura		132KV Stage-I-Mawlai loading (MW)	132KV Stage-I-NEHU loading (MW)
	Scheduled Drawal	Actual drawal From		Scheduled drawal	Actual	Scheduled drawal	Actual	Scheduled drawal	Actual			
		Khliehriat	Sarusajai							Total drawal		
15:20**	52.20	55.10	17.10	72.20	22.00	37.00	9.00	13.00	33.50	19.20		
15:50**	54.00	62.40	18.90	81.30	23.00	30.00	8.00	13.00	33.00	19.20		
16:00	56.50	24.30	51.20	75.50	24.00	30.00	6.00	10.00	47.80	43.50		
16:45	69.60	21.90	55.90	77.80	30.00	33.00	19.00	1.00	54.10	47.80		
17:17	91.70	27.40	72.20	99.60	40.00	38.00	50.00	22.00	62.70	55.30		
17:41	95.10	28.60	84.40	113.00	41.00	39.00	53.00	48.00	71.00	62.00		
18:00	89.00	34.20	81.80	116.00	39.00	32.00	51.00	48.00	75.00	65.50		
18:45	88.10	31.20	75.60	106.80	39.00	36.00	53.00	41.00	70.10	62.00		
20:05	91.40	32.50	70.30	102.80	40.00	35.00	54.00	39.00	68.70	59.50		
21:00	79.40	32.50	67.80	100.30	34.00	38.00	45.00	37.00	69.50	60.00		
22:00	70.80	28.00	59.00	87.00	30.00	30.00	38.00	11.00	67.00	58.00		

NOTE :- (a.) ** Sufficient support from Khliehriat (PGCIL) when there was no constraints in the 132KV pocket (i.e.system was not broken from NEHU-Khliehriat (MeSEB) lines).

(b.) From 16:00 hrs onwards during peak hours, restriction of support from Khliehriat (PGCIL) when there was constraint in the 132KV pocket (i.e.No Kopili & Khandong

Generations due law and order problem). Restriction to draw 30MW only from Khliehriat (PGCIL) was only possible by breaking the system at NEHU-Khliehriat (MeSEB) lines).

(d.) Due to Overloading of 132KV Stage-I-Mawlai and 132KV Stage-I-NEHU lines, MeSEB implemented load shedding (10-20MW) during every such peak hours to avoid tripping of the said lines.

पावर ग्रिड कारपोरेशन ऑफ इंडिया लिमिटेड
 उत्तर पूर्वी क्षेत्रीय भार प्रेषण केंद्र
 लोवर नंगरा, डोंगती, लापालंग, शिलांग
 POWER GRID CORPORATION OF INDIA LIMITED
 NORTH EASTERN REGIONAL LOAD DESPATCH CENTRE
 LOWER NONGRAH, DONGTIEH, LAPALANG, SHILLONG

Ref: NERLDC/OS/01/6095-165

Dated : 28/02/2008

To,

1. Chief Engineer (West), Power Department, Govt. of Arunachal Pradesh, Itanagar
2. Chief General Manager (SLDC), AEGCL, Kahelipara, Guwahati
3. Chief Engineer (Electrical), Department of Power, Govt. of Manipur, Imphal
4. Member (Technical), MeSEB, Lum Jingshai Short Round Road, Shillong
5. Chief Engineer (Power), Department of Power, Govt. of Mizoram, Aizwal
6. Chief Engineer (Power), Department of Power, Govt. of Nagaland, Kohima
7. Chairman & Managing Director, TSECL, North Banamalipur, Agartala, Tripura
8. ED (O&M), NEEPCO, Lower New Colony, Shillong
9. Chief Engineer, Loktak Power Station (NHPC), Loktak, Kom Keirep, Manipur

Copy: Member Secretary (NERPC), MSHFCS Ltd. Building, Nongrim Hills, Shillong – 3

Subject: Requirement of data at NERLDC for preparation of various reports.

Sir,

At NERLDC, following reports are generated and posted in NERLDC website:

- a) Weekly outage report
- b) Monthly system status report
- c) Monthly performance report
- d) Quarterly system status report
- e) Monthly power supply position report published on 1st day of next month

All reports are published based on data received from the constituents in addition to data available at NERLDC through SCADA as well as Special Energy Meters installed in the region. It is to emphasize here that data availability from the constituents is vital & crucial for publishing the reports.

Requirement of data from the constituents is given below:

1. State own generation – unit wise (monthly) to be faxed to NERLDC on 1st day of next month.
2. Generation of ISGS – unit wise (monthly) to be faxed to NERLDC on 1st day of next month.
3. Weekly outage report of all generating units and transmission lines (132 KV & above) to be received at NERLDC by Wednesday (for previous week, Monday to Sunday).

Present status of receipt of data:

- | | |
|--|--|
| 1. State own generation (monthly) and Mizoram | : Not received from AP, Nagaland |
| 2. Generation of ISGS (monthly) | : Received from all |
| 3(a). Weekly outage report of generators | : Not received from RHEP (NEEPCO), Tripura, AP, Nagaland and Mizoram |
| 3(b). Weekly outage report of state sector lines | : Not received from AP, Manipur, Mizoram, Nagaland and Tripura |

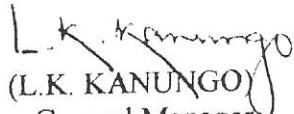
It may be appreciated that non-receipt of data from so many locations create constraint for us in preparation of report(s) and at time we have to go ahead excluding data of some states in our report(s).

It is requested that all concerned may please be suitably directed to ensure that data from all locations is sent to NERLDC within the time limit mentioned above to enable us to prepare detailed reports and send to various authorities/publish in NERLDC website.

It is also to be mentioned here that hourly generation data (hard copy) of various power station is being sent to NERLDC on regular basis. This practice is being continued since long. However, at present hourly data is taken from the SCADA /SEM and figures sent by constituents is not being used. In view of this, sending of hourly data may please be discontinued immediately. Instead hourly demand data of each state may please be sent to NERLDC on daily basis as already discussed and agreed in the NERPC OCC forum.

Thanking you

Yours Faithfully


(L.K. KANUNGO)
General Manager