



भारत सरकार Government of India

शक्ति विभाग Ministry of Power

भारतीय बिजली प्राधिकरण

Central Electricity Authority

उत्तर-पूर्व क्षेत्रीय बिजली प्राधिकरण

North Eastern Regional Power Committee

शिल्लोंग Shillong

Progress Report

For the month of

September, 2012

CONTENTS

Sl. No.	Topics	Page No.
1	Brief Highlights of North Eastern Regional Power System	1
2	Salient Features	2
<u>DETAILS OF THE REPORT</u>		
3	Monthly Power Supply Position: (i) Energy generation in the Region (ii) Requirement Vs Availability in the Region (iii) Estimation of Peak Demand (MW) (iv) Estimation of Energy Requirement (MU)	3 3 4 4
4	Station wise Energy Generation (MU) & Peak Generation (MW): (i) State Sector (ii) Central Sector	5, 6 7
5	Plant Load Factor (PLF)	8
6	Voltage Profile of Important Sub-Stations	8
7	(i) Inter Regional Energy Exchange (ii) Major Grid disturbances (iii) Meetings held by NERPC	9 9 9
8	Status of progress of: (i) Generating Units (ii) Transmission Lines	10 11, 12
9	Commercial Status (i) UI Accounting (ii) Schedule and CS Share Allocation	13 14, 15
10	NER Grid Status on (i) Regional Peak Demand day (ii) Regional Minimum Demand day	16 17
<u>ANNEXURES</u>		
A-1	Major Reservoir Levels	I
A-2	Frequency Analysis and it's Profile	II
A-3	Scheduled Bilateral Exchanges	III
A-4	Energy Exchanges	IV
<u>EXHIBITS</u>		
B-1	Frequency Profile: (i) Duration of frequency in different ranges (ii) Frequency Variation Index	I II
B-2	Voltage Profile: (i) Voltage Profile of Important Sub-Stations	III
B-3	Energy Generation: (i) Energy Generation by Constituents during the month (ii) Energy scenario of State's during the month	IV V
B-4	Reservoir profile : (i) Reservoir statistics for the month	VI

NORTH EASTERN REGIONAL POWER COMMITTEE

Brief highlights of North Eastern Regional Power System for the month of September, 2012

- ❖ The maximum unrestricted demand during the month of **September, 2012** was **1998 MW**, which was **1960 MW** in the month of **August, 2012**. The peak demand met in NER during the period under review was **1805 MW**, which was **1789 MW** last month.
- ❖ The energy requirement during the month of **September, 2012** was **1027.90 MU**, which was **1070.19 MU** in the month of **August, 2012**. The energy availability in NER during the period under review was **962.43 MU**, which was **1004.88 MU** last month.
- ❖ The maximum, minimum & average system frequency were **50.69, 49.02 & 50.08 Hz** respectively. The maximum, minimum & average FVI were **1.767, 0.17 & 0.391** respectively. The average FVI was **less** than its previous month's figure. (refer Annex-II).
- ❖ Maximum export of power from NER to ER was **200 MW (on 17/09/12 at 16:16 hrs)** and that from ER to NER was **522 MW (09/09/12 at 20:38 hrs)**. Total net energy import during the month was **63.1 MU (from ER)**.

**SALIENT FEATURES OF
NORTH EASTERN REGIONAL GRID FOR SEPTEMBER, 2012**

1	New unit/ transmission lines/Transformers commissioned during this month	Nil	
2	Number of total grid disturbance during this month	Nil	
		Sep-12	Sep-11
3	Installed Capacity of the Region (in MW)(grid)	2190.82	2091.32
4	Energy Generation in MU (Gross)::		
	Thermal	334.241	350.962
	Hydel	546.265	548.346
	Diesel / Oil	0.000	0.000
	Total	880.505	899.308
5	Demand in MW ::		
	Registered Peak demand	1998.00	1876.00
	Peak demand met	1805.00	1690.00
	Shortage (% age)	-9.66	-9.91
6	Regional Energy(Gross) in MU ::		
	Energy requirement	1027.90	1018.15
	Energy availability	962.43	936.45
	Surplus (+) / Deficit (-) (% age)	-6.37	-8.02
7	Inter Regional Energy Exchange in MU ::		
	NER ----> ER	27.161	22.681
	ER ----> NER	90.265	67.782
	Net Import	63.104	45.10
8	Frequency profile ::		
	Average frequency (Hz)	50.08	49.92
	Average Frequency Variation Index	0.391	0.503
9	Load Factor (in %)	66.90	69.33

ENERGY GENERATION IN THE REGION FOR THE MONTH OF Sep-12

All figures in MU

Constituents	Hydro		Coal / Oil fired		Gas Based(OpenCycle)		Gas Based(Com Cycle)		Total(gen)	Total(gen)
	Gross	Net	Gross	Net	Gross	Net	Gross	Net	Gross	Net
	A	B	C	D	E	F	G	H	I	J
State Sector :										
Assam	65.056	64.405	0.000	0.000	72.120	71.399	39.691	38.500	176.867	174.305
Meghalaya	86.525	85.659	0.000	0.000	0.000	0.000	0.000	0.000	86.525	85.659
Mizoram	4.374	4.331	0.000	0.000	0.000	0.000	0.000	0.000	4.374	4.331
Tripura	4.707	4.660	0.000	0.000	64.581	63.935	0.000	0.000	69.288	68.595
Nagaland	16.900	16.731	0.000	0.000	0.000	0.000	0.000	0.000	16.900	16.731
Total (State Sector)									353.954	349.621
Central Sector :										
NEEPCO :										
Khd+Kop+Kop-II	92.349	91.426	0.000	0.000	0.000	0.000	0.000	0.000	92.349	91.426
K'guri	0	0	0.000	0.000	0	0	132.406	128.434	132.406	128.434
RCNagar	0	0	0	0	43.940	43.501	0	0	43.940	43.501
Doyang	41.653	41.237	0	0	0	0	0	0	41.653	41.237
Ranganadi	198.286	196.303	0	0	0	0	0	0	198.286	196.303
NHPC :										
Loktak	68.010	67.330	0.000	0.000	0.000	0.000	0.000	0.000	68.010	67.330
Total (Central Sector)									576.644	568.229
Total NER	577.860	572.081	0.000	0.000	180.641	178.835	172.097	166.934	930.598	917.850

REQUIREMENT Vs AVAILABILITY IN THE REGION

STATES	ENERGY requirement (MU) at 50 Hz				POWER requirement (MW) at 50 Hz			
	Availability & L/S at prevailing freq.				Availability & L/S at prevailing freq.			
	Requirt.	Availy.	Shortfall	%Shortfall	Requirt.	Availy.**	Shortfall	%Shortfall
Ar.Pr.	54.97	50.80	4.17	7.59%	115	112	4	3.13%
Assam	596.07	559.99	36.07	6.05%	1144	1073	71	6.19%
Manipur	53.95	51.49	2.46	4.56%	118	114	4	3.27%
M'laya	137.60	125.31	12.29	8.93%	281	278	3	0.92%
Mizoram	33.83	31.03	2.81	8.29%	65	64	1	1.19%
Nagaland	53.23	50.65	2.58	4.84%	100	97	3	3.44%
Tripura	98.25	93.15	5.10	5.19%	201	197	4	2.05%
REGION	1027.90	962.43	65.48	6.37%	1998	1805	193	9.65%

ESTIMATION OF PEAK DEMAND (in MW)

Constituents	Peak Demand Met	Date	Freq. (Hz)	Freq. Corr.**	L/S	Estimated Peak demand at 50 Hz
Arunachal Pradesh	111.63	10/09/2012	49.93	0.23	3	115.23
Assam	1072.82	02/09/2012	50.20	-6.44	77	1143.56
Manipur	113.77	29/09/2012	49.82	0.61	3	117.61
Meghalaya	278.00	10/09/2012	49.93	0.58	2	280.58
Mizoram	64.00	24/09/2012	50.12	-0.23	1	64.77
Nagaland	96.59	17/09/2012	49.99	0.03	3	100.03
Tripura	197.00	11/09/2012	49.98	0.12	4	201.12
REGION	1805.00	13/09/2012	50.04	-2.17	195	1997.83

** Freq.Correction = Demand met x 0.03 x (50 - Av. Freq.)

ESTIMATION OF ENERGY REQUIREMENT (in MU)

Average Frequency 50.08 Hz

Constituents	Generation	Energy drawal from grid			Over(+) / Under(-) Drawal	Energy Availability*	Freq. Corr.**	L / S	Actual Requirement
		Entitlement frm ISGS of NER	Entitlement frm ISGS of ER	Drawal					
Ar.Pr.	0.000	54.685	2.747	50.801	-6.631	50.801	-0.122	4.30	54.974
Assam	174.305	252.071	72.763	385.687	60.854	559.992	-1.344	37.42	596.066
Manipur	0.000	57.538	0.000	51.490	-6.048	51.490	-0.124	2.58	53.951
M'laya	85.659	46.527	19.207	39.651	-26.083	125.311	-0.301	12.59	137.596
Mizoram	4.331	29.028	1.994	26.697	-4.325	31.028	-0.074	2.88	33.834
Nagaland	16.731	35.662	6.059	33.923	-7.797	50.654	-0.122	2.70	53.232
Tripura	68.595	44.670	0.000	24.555	-20.114	93.150	-0.224	5.32	98.250
REGION	349.621	520.180	102.770	612.805	-10.145	962.425	-2.310	67.79	1027.903

*Energy availability means energy consumed by constituents

** Freq.Correction = Demand met x 0.03 x (50 - Av.Freq.)

ENERGY GENERATED (MU) AND PEAK GENERATION (MW) FROM GENERATING STATIONS/UNITS:

Sl. No.	Power Stations / Units	Installed Capacity(MW)	Peak Generation(MW)	Energy Generation (MU)	
				Sep-12	Sep-11
STATE SECTOR : HYDRO					
ASSAM :: HYDRO					
1	KARBI HEP U - 1	50.00	0.00	33.792	30.209
2	KARBI HEP U - 2	50.00	0.00	31.264	28.134
TOTAL		100.00		65.056	58.343
MEGHALAYA :: HYDRO					
1	STAGE - 1	36.00	30.69	10.808	10.110
2	STAGE - 2	18.00	34.17	5.197	0.000
3	STAGE - 3	60.00	60.41	13.809	14.270
4	STAGE - 4	60.00	61.00	28.540	29.080
5	UMTRU	11.20	12.00	2.680	3.560
TOTAL		185.20		61.034	57.020
NAGALAND :: HYDRO					
6	LIKIMRO - 1				
7	LIKIMRO - 2	24.00	24.00	15.170	14.918
8	LIKIMRO - 3				
TOTAL		24.00		15.170	14.918
TRIPURA :: HYDRO					
9	GUMTI - 1	5.00	Gumti Stn. Peak = 0 MW	0.000	0.000
10	GUMTI - 2	5.00		2.628	2.697
11	GUMTI - 3	5.00		2.079	2.611
TOTAL		15.00		4.707	5.308
TOTAL STATE (HYDRO) :		324.20		145.967	135.589

ENERGY GENERATED (MU) AND PEAK GENERATION (MW) FROM GENERATING STATIONS/UNITS:

Sl. No.	Power Stations / Units	Installed Capacity(MW)	Peak Generation(MW)	Energy Generation (MU)	
				Sep-12	Sep-11
STATE SECTOR : THERMAL/GAS					
MIZORAM ::Thermal					
1	Bairabi	22.92	0.00	0.000	0.000
TRIPURA :: THERMAL					
1	BARAMURA - 1	5.00	Baramura Stn. Peak = 20.9 MW	0.000	0.000
2	BARAMURA - 2	5.00		0.000	0.000
3	BARAMURA - 3	6.50		0.000	0.000
4	BARAMURA - 4	21.00		13.548	14.556
5	BARAMURA - 5	21.00		14.576	14.742
6	ROKHIA - 1	8.00	Rokhia Stn. Peak = 49.4MW	0.000	0.000
7	ROKHIA - 2	8.00		0.000	0.000
8	ROKHIA - 3	8.00		0.000	0.000
9	ROKHIA - 4	8.00		3.281	4.560
10	ROKHIA - 5	8.00		0.000	0.000
11	ROKHIA - 6	8.00		4.054	0.000
12	ROKHIA - 7	21.00		14.878	10.396
13	ROKHIA - 8	21.00		14.245	14.916
	TOTAL	148.50		64.581	59.169
ASSAM :: THERMAL					
1	LTPS - 1	15.00	0	4.790	5.310
2	LTPS - 2	15.00	0	6.580	8.110
3	LTPS - 3	15.00	0.0	0.000	8.660
4	LTPS - 4	15.00	0	5.666	7.500
5	LTPS - 5	20.00	0	11.631	10.742
6	LTPS - 6	20.00	0	10.187	9.896
7	LTPS - 7	20.00	0.0	12.082	10.252
8	NTPS - 1	20.00	0.0	12.351	11.150
9	NTPS - 2	21.00	0.0	10.438	12.095
10	NTPS - 3	21.00	0.0	6.168	4.419
11	NTPS - 4	11.00	0.0	3.802	5.492
12	NTPS - 5	22.00	0.0	0.459	0.000
13	NTPS - 6	22.00	0.0	6.473	7.084
14	DLF	24.50	2.6	2.687	5.019
	TOTAL	261.50		93.314	105.729
TOTAL STATE THERMAL/GAS :		432.92		157.895	164.898
TOTAL SC GEN(HY+TH/GAS)		757.12		303.861	300.487

ENERGY GENERATED (MU) AND PEAK GENERATION (MW) FROM GENERATING STATIONS/UNITS:

Sl. No.	Power Stations / Units	Installed Capacity(MW)	Peak Generation(MW)	Energy Generation (MU)	
				Sep-12	Sep-11
CENTRAL SECTOR : HYDRO					
1	KHANDONG - 1	25.00	24.67	11.281	10.217
2	KHANDONG - 2	25.00	24.76	11.152	12.696
3	KOPI LI Stg - II	25.00	23.74	13.061	15.055
4	KOPI LI - 1	50.00	47.46	16.143	32.650
5	KOPI LI - 2	50.00	0.00	0.000	34.303
6	KOPI LI - 3	50.00	49.21	17.775	32.436
7	KOPI LI - 4	50.00	50.59	22.937	30.959
8	DOYANG -1	25.00	25.32	14.684	16.725
9	DOYANG -2	25.00	25.15	11.843	16.631
10	DOYANG -3	25.00	26.52	15.126	16.880
11	LOKTAK - 1	35.00	38.79	20.375	22.776
12	LOKTAK - 2	35.00	37.51	23.396	22.790
13	LOKTAK - 3	35.00	37.00	24.239	23.577
14	RANGANADI - 1	135.00	138.94	66.721	40.672
15	RANGANADI - 2	135.00	134.80	67.491	36.483
16	RANGANADI - 3	135.00	140.39	64.074	47.908
TOTAL HYDRO :		860.00		400.298	412.758
CENTRAL SECTOR : THERMAL/GAS					
1	KATHALGURI - 1	33.50	32.51	21.240	5.563
2	KATHALGURI - 2	33.50	32.80	1.820	9.289
3	KATHALGURI - 3	33.50	32.51	20.349	21.646
4	KATHALGURI - 4	33.50	33.33	15.664	22.102
5	KATHALGURI - 5	33.50	35.39	19.592	19.825
6	KATHALGURI - 6	33.50	36.12	19.384	21.118
7	KATHALGURI - 7	30.00	22.50	7.477	0.000
8	KATHALGURI - 8	30.00	26.64	11.778	14.558
9	KATHALGURI - 9	30.00	29.28	15.103	16.042
10	R.C.NAGAR - 1	21.00	22.45	14.842	14.227
11	R.C.NAGAR - 2	21.00	13.35	0.095	13.846
12	R.C.NAGAR - 3	21.00	21.97	14.765	13.743
13	R.C.NAGAR - 4	21.00	21.44	14.238	14.107
TOTAL THERMAL/GAS :		375.00		176.346	186.063
TOTAL CS (HY + TH/GAS) :		1235.000		576.644	598.821
TOTAL NER GEN(HY+TH/GAS) :		1992.120		880.505	899.308

Plant Load Factor (PLF) and Voltage Profile :

Sep-12

PLANT LOAD FACTOR OF THE THERMAL/ GAS STATIONS IN NER

Sl. No.	Power Station	State/ Constituent	Installed Capacity (MW)	Generation (in MU)	Stationwise PLF (%)
1	LTPS*	AEGCL	120.00	50.936	58.95
2	NTPS*	AEGCL	117.00	39.691	47.12
3	Baramura	Tripura	58.50	28.123	66.77
4	Rokhia	Tripura	90.00	36.458	56.26
5	AGBPP	NEEPCO	291.00	132.406	63.19
6	AGTPP	NEEPCO	84.00	43.940	72.65

*LTPS-- Lakwa Thermal Power Station, NTPS-- Namrup Thermal Power Station

VOLTAGE PROFILE :

A. MAXIMUM AND MINIMUM VOLTAGE (kV) OF IMPORTANT SUB - STATIONS :

Sl. No.	NAME OF S/S	MAXIMUM (kV)	MINIMUM (kV)
1	BALIPARA 400 kV	419	378
2	MISA 400 kV	424	393
3	MISA 220 kV	228	208
4	SALAKATI 220 kV	213	196
5	HAFLONG 132 kV	143	121
6	AIZAWL 132kV	140	110
7	KUMARGHAT 132kV	147	118

Voltage Range in kV as percentage of time for the block

SUB-STATION	kV < 360	360<kV<380	380<kV<420	kV>420
MISA	0.00	0.00	95.35	4.65
BALIPARA	3.55	0.00	96.38	0.07

1 **INTER - REGIONAL EXCHANGE :**

All Fig in MU

NER to ER	27.161
ER to NER	90.265
NET IMPORT	63.104

2 **Major Grid Disturbances during this month**

Nil

3 **MEETING HELD BY NERPC DURING THIS MONTH**

1. 77th OCC Meeting was held on 13.09.12 at Guwahati.

2. 5th PCC Meeting was held on 14.09.12 at Guwahati.

PROGRESS OF GENERATION PROJECTS IN NER				
Name of the Generation Scheme	No. of Units	Capacity (MW)	Commissioning Schedule	REMARKS
[A] NEEPCO				
1. Monarchak TGBPP		104	2013	Activities in progress
2. Tuirial HEP Mizoram	2	2 X 30	2015	Being reviewed by PIB
3. Kameng HEP A. Pradesh	4	4X150	2017	Activities in progress
4. Tuival H.E. Proj. Mizoram	3	3X70	2015	Status not available
5. Tipaimukh HEP		1500	2015	Activities in progress
6. Mawphu HEP	2	90	2015	UNDER CCEA
7. Pare HEP, Ar. Pradesh		110	2015	UNDER CCEA
[B] NHPC				
a). Loktak Downstream HEP	2	66	2014	Activities in progress
b) Subansiri Lower HEP		2000	2016-17	Activities in progress
c) Siang Middle HEP		2000	2016	Activities in progress
d) Subansiri Upper HEP		2000	DPR Under prep	
e) Subansiri Middle HEP		1000	DPR Under prep	
f) Dibang Multipurpose Project		3000	Under TEC	
[C] NTPC				
a). Bongaigaon TPS	3	3X250	2013-14	Activities in progress
[D] JV PROJECT				
a). Palatana CCPP	2	2X323.3	2012	Activities in progress
[E] ASSAM				
(a) Lakwa WHRP		37.2	2012	Activities in progress
(b) Namrup CCPP	2	2X40	2014	
[F] MIZORAM				
(a) Tuivai Hydrel Project	2	51	2015	Activities in progress
(b) Bairabi Dam Project	2	2 X 40	2015	Activities in progress
(G) MeECL				
(a) Myntdu - Leishka HEP	2+1	3x42	2012-13	Activities in progress
(b) New Umtru HEP	2	2X20	2014-15	Activities in progress

PROGRESS OF TRANSMISSION LINES IN NE REGION									
	Name of the line	Length	Comm'n'g Sch		Total no.	Stubs com -	Tower	Stringing	Remarks
		(ckt kms)	Ann.pl	Ant/revd	of locs .	pleted(nos)	Erected	complt-ckm	
A : Lines under ASEB:									
1	LILo of 400 kV D/C Ranganadi-Balipara at Kukurmara	20	Jul-13		20				Deposit work to PGCIL
2	220 kV, D/C Bongaigaon TPS (NTPC) -Rangia	360	Dec-13		504	150	140	0	Design apprvd, prototype test
3	220 kV, S/C BTPS(AEGCL) - Agia-Sarusajai-II	198	Mar-12		601	601	0		
4	220 kV S/C (on D/C) Namrup TPS-Mariani	141	May-13	41609					Contract awarded
5	LILo of 220 kV D/C Agia-Sarusajai at Kukurmara	4	Feb-12	Sep-12	8	8	8	4	Commissioned
6	132 kV D/C BTPS - Kokrajhar	18	Dec-12	Mar-13	50	5	5	0	
7	132 kV D/C Kokrajhar-Bilashipara-Gauripur	70	Oct-13	Dec-13	121				
8	132 kV D/C Kukurmara-Azara	6	Dec-12	May-12	28				Contract awarded
9	132 kV D/C Kukurmara- Boko	25	May-13		126	126	126	80	Completed
B : Lines under MeECL :									
1	LILo of 400kV D/C Silchar - Bongaigaon at Killing (Byt	9	Dec-12		9	1	0	0	Evaluation of tender in progress
2	132 kV S/C New Umtru HEP-Norbong (EPIP II)	3	Mar-12						
3	132 kV D/C Killing(Bymihat)-EPIP I	17	Mar-12						Work in progress
4	132 kV D/C Mawngap - Sumer	66	Dec-11	Dec-12	102	102	102	66	
5	132 kV D/C Rongkhon - Ampati	33	Mar-12	Mar-13	103				Work in progress
6	132 kV S/C Nangalbibra - Agia	92	Mar-12		316	316	316	91	Work in progress
7	LILo of 132 kV S/C Agia-Nangalbibra at Mendipathar	5	Mar-12	Nov-12	9	9	5	0	
8	LILo of 132 kV D/C Mawlai-Cherrapunjee at Mawngap	10	Dec-11	Dec-12	15	10	5	0	
9	LILo of 132 kV D/C Mawlai-nangalbibra at Mawngap	5	Mar-12	Dec-12	13	0	0	0	Work in progress
C : Lines under Mizoram :									
1	LILo of 132 kV S/C Zemabak - W. Phaileng at Sinh	5	Dec-11						
D : Lines under TSECL :									
1	400 kV D/C Purba kanchan Bari- Surajmani Nagar	260	Mar-12						Fund not yet tied up.
2	132 kV D/C Surjyamani Nagar - 79 Tilla (Agartala)	36	Mar-12		41	18	0	0	Work in progress
3	132 kV D/C Surjyamani Nagar - Badarghat	6	Mar-12						Fund not yet tied up.
4	132 kV D/C Surjyamani Nagar - Budhjangnagar	36	Apr-12		63	25	0	0	ROW problem
5	132 kV D/C Surjyamani Nagar - Rokhia	35	Mar-12						Fund not yet tied up.
6	132 kV D/C Surjyamani Nagar - Udaipur	50	Mar-12		41	41	41	12	Completed
E : Lines under NETC :									
1	400 kV D/C Palatana - Silchar	492	Feb-12	Aug-12	680	680	680	495	Commissioned on Aug, 12
2	400 kV D/C Bongaigaon- Silchar	830	Jun-12	Apr-13	1150	950	886	440	Forest clearance awaited

	Name of the line	Length (ckt kms)	Comm'n'g Sch		Total no. of locs	Stubs com - pleted(nos)	Tower Erected	Stringing complt-ckm	Remarks
			Ann.pl	Ant/revd					
F : POWERGRID Lines:									
1	+/- 800kv HVDC Bipole Biswanath Chariyali - Agra	1971	Aug-13	Sep-14	4228	3400	2710	461	Matching with HVDC Converter
2	400kV Balipara - Biswanath Chariyali D/C	130	Aug-13	Aug-13	167	146	138	67	Matching with L. Subansiri
3	LILO of 400 kv Ranganadhi Balipara D/C at Biswanath	54	Aug-13	Aug-13	76	70	69	20	Matching with Gen. of L.Subansi
4	132 kV D/C B. Chariyali-B. Chariyali (AEGCL)	32	Aug-13	Aug-13	55	21	2		
5	400 kV Kameng-Balipara D/C	110	Feb-13	Mar-14	142	57	9	0	Matching with Gen. of Kameng
6	400kV Balipara- Bongaigaon D/C line	596	Feb-13	Feb-13	837	769	661	224	Matching with Gen. of Kameng
7	400kV Lower Subansari-Biswanath Charrali line-I	334	Feb-13	Dec-13	444	317	218	64	Matching with Gen. Project
8	400kV Lower Subansari-Biswanath Charrali Line-II	340	Feb-13	Feb-13	442	325	196	35	Matching with Gen. Project
9	132 kV Kopili- Khandong-II	12	Sep-09		43	37	24	8	Forest clearance awaited
10	400 kV D/C Bongaigaon TPS-Bongaigaon line	6	Mar-12		11	8	4	0	
11	400kV D/C Pallatana- Surajmani -nagar line	70	Dec-11	Jun-12	118	118	118	74	Compl. of Suraj-mannagar by TSECL
12	400kV D/C Silchar-Purba Kanchan Bari line	252	Mar-12	Jun-12	373	308	203	38	ROW problem
13	400kV D/C Silchar-Melriat(New) line	320	Dec-12	Mar-13	435	135	89	32	1st Stg Forest clearance awaited
14	400kV D/C Silchar-Imphal(New) line	280	Dec-12	Jun-12	427	135	28	0	Likely to be delayed Efforts to be made to match U#2 of Palatana GBPP
15	220kV D/C Mariani(New)-Mokikchung(PG)	112	Dec-12	Mar-13	160	46	25	0	
16	132kV Silchar-Badarpur(PG) SW Interconnecting line	42	Nov-11		69	68	64	28	To match with U#1 of Palatana
17	132kV D/C Melriat(New)- Melriat (Mizo) Interconnecting line	60	Dec-12	Mar-13	85				Melriat S/s by Mizoram
18	132kV D/C Silchar-Srikona (AEGCL) line	6	Dec-11		10	7	7	2	Award Placed
19	132kV D/C Silchar-Hailakandi (AEGCL) line	50	Dec-11		65	65	65	39	Completion matching with S/S Efforts to be made to match U#2 of Palatana GBPP
20	132kV D/C Mokikchung(PG)- Mokikchung(Naga) line	2	Dec-12	Mar-13	4				
21	132 kV S/C Pasighat-Roing line (on D/C)	70	Dec-12	Mar-13	338	41	0	0	Completion matching with S/S.
22	132 kV S/C Roing-Tezu line (on D/C)	60	Dec-12	Mar-13	241	70	37	0	Engg. in progress
23	132 kV S/C Tezu-Namsai line (on D/C)	90	Dec-12	Mar-13	330	52	27	0	Completion matching with S/S.
24	LILO of 400kV S/C Kathalguri -Misa line at Mariani(Nev)	2	Dec-12		20				
25	LILO of 132 kV S/C Loktak-Imphal line at Imphal (Nev)	60	Dec-12		150	0	0	0	
26	220 kV D/C Bongaigaon TPS (NTPC)-Bongaigaon	15	Dec-12		11	10	10	3	

UI Receivable/ Payable for the month of**Sep-12**

Organisation	Actual (MU)	Schedule (MU)	UI Energy (MU)	UI Receivable (Rs. in Lakhs)	UI Payable (Rs. in Lakhs)
Arunachal Pradesh	50.801	57.915	-7.114	116.636	17.948
ASEB	385.687	373.809	11.878	62.578	379.534
Manipur	51.490	64.059	-12.569	168.969	0.042
MeSEB	39.651	46.489	-6.838	134.162	11.165
Mizoram	26.697	31.586	-4.889	68.950	3.920
Nagaland	33.923	41.720	-7.797	98.623	1.177
Tripura	24.555	28.412	-3.857	63.453	27.139

Entitlement, Schedule, Drawal and UI Charges**Sep-12**

Name of beneficiaries	Entit. from scheduled energy from ISGS in NER (Ex-PP State)	Entit. from scheduled energy from ISGS in ER (Ex-PP State)	Total Entitlement (Ex-PP State) (in MU)	Schedule (Ex-PP State) (in MU)	Actual Drawal from Grid (MU)	Over Drawal (+) / Under Drawal (-) (MU)	UI Payable (-)/ Receivable (+) (Rs. In Cr)
Arunachal Pradesh	54.685	2.747	57.432	57.915	50.801	-7.114	0.987
ASEB	252.071	72.763	324.834	373.809	385.687	11.878	-3.170
Manipur	57.538	0.000	57.538	64.059	51.490	-12.569	1.689
MeSEB	46.527	19.207	65.734	46.489	39.651	-6.838	1.230
Mizoram	29.028	1.994	31.022	31.586	26.697	-4.889	0.650
Nagaland	35.662	6.059	41.720	41.720	33.923	-7.797	0.974
Tripura	44.670	0.000	44.670	28.412	24.555	-3.857	0.363

(Source : UI A/c, NERPC)

* In addition to total entitlement, bilateral exchanges and purchase/sell through traders/exchange are covered in Annexure-III

Schedule for ISGS's Generation and State's Drawl for the month of

Sep-12

States	Schedule From ISGS(MWH)	Bilateral Schedule from Outside NER (MWH)	Total Schedule (MWH)	Ex.PP. Drawal (MWH)	Tr. Energy (MWH)
Arunachal Pradesh	55732.76	2774.45	58507.21	52358.58	58507.21
ASEB	257525.26	73703.70	331228.96	397514.63	397514.63
Manipur	58647.03		58647.03	53068.71	58647.03
MeSEB	47561.08	30877.10	78438.18	40867.11	78438.18
Mizoram	29730.25	2932.25	32662.50	27516.04	32662.50
Nagaland	36464.52	6706.38	43170.90	34963.14	43170.90
Tripura	45262.80		45262.80	25308.41	45262.80
Total	530923.70	116993.88	647917.57	631596.62	714203.25

ISGS	Schedule (MWH)	Injection (MWH)
LOKTAK	56543.98	72927.32
KHANDONG	20996.30	31011.03
KOPILI-I	52756.90	69477.89
KOPILI-II	12719.15	14639.61
DHEP	38846.77	49851.74
RHEP	193173.66	164617.36
AGTPP	37587.33	52011.10
AGBPP	118299.62	139969.74
Total	530923.70	594505.79

Source : Provisional REA for the month:

Sep-12

Cumulative wt. Average Share Allocation (%) (Up to this month) in CS Stations

States	KOPILI	KOPILI-II	KHANDONG	RHEP	DHEP	AGBPP	AGTPP	Loktak HEP
	(200 MW)	(25 MW)	(50 MW)	(405 MW)	(75 MW)	(291 MW)	(84 MW)	(90 MW)
Arunachal Pradesh	5.191	5.992	4.194	18.462	6.852	5.694	6.132	4.940
Assam	53.455	52.355	56.285	43.328	43.808	56.503	45.585	29.445
Manipur	7.395	6.945	6.555	8.373	7.865	8.105	8.313	30.115
Meghalaya	17.395	13.675	16.905	11.505	11.455	11.815	11.813	12.393
Mizoram	4.610	6.040	3.940	5.700	5.250	5.410	5.980	5.020
Nagaland	6.147	5.735	6.653	5.335	17.967	5.805	5.377	6.435
Tripura	5.807	9.258	5.468	7.297	6.803	6.668	16.800	11.652
Total	100.00	100.00	100.00	100.00	100.00	100.00	100.00	100.00

Details of Fixed and Energy Charges of CS Stations for FY 2011-12

Projects	Installed Capacity (MW)	Design Energy (GWh)	Annual Fixed Charge (Rs. Crore)	Reference
KOPILI HEP	200	1186.14*	81.2979 *	*As per CERC order dated 30.09.2011 in petition No 294/2009.
KOPILI -II	25	86.3*	13.3856 **	* Provisional, ** As per CERC order dated 01.01.08 in pet. No 70/2006
KHANDONG HEP	50	277.61*	44.7731 *	*As per CERC order dated 30.09.2011 in petition No 297/2009.
RHEP*	405	1509.69	291.3941	*As per CERC order dated 10.05.2011 in petition No.296/2009.
DHEP	75	227.24	58.5 *	*As per CERC order dated 03.10.07 in petition No 88/2007.
AGBPP	291	NA	238.82 *	As per CERC order dated 6.9.2011 in Pet.No295 / 2009
AGTPP	84	NA	69.8278 *	Base Rate of energy Charge as per the CERC Order
LOKTAK HEP	105	448.00	101.2114 *	*As per CERC order dated 11.03.11 in Pet.No 299/2009,^Base Engy. charge as per CERC order
				*As per CERC order dated 14.06.11 in Pet.No 108/2010

HOURLY DATA ON PEAK DEMAND MET DAY

DATE:- 13.09.2012

All figures in MW

HRS.	Total ISGS Injection (MW)	STATE SECTOR																		ER					Total Drawal by States
		ASEB			MeSEB			Tripura			Manipur		Mizoram			Nagaland		Ar. Pradesh			Total N.E.R GEN	Total Demand Met	Gross Demand met	Actual Loss	
		GEN	Drawal	Demand Met	GEN	Drawal	Demand Met	GEN	Drawal	Demand Met	Drawal	Demand Met	GEN	Drawal	Demand Met	Drawal	Demand Met	Drawal	Demand Met						
1	886	210	543	753	125	83	208	105	13	117	41	41	8	25	33	32	32	60	60	-52	1333	1244	1281	37	849
2	842	213	497	710	125	110	235	104	10	114	32	32	7	22	30	27	27	59	59	-43	1291	1206	1248	42	800
3	841	213	471	683	125	106	230	105	7	112	26	26	8	22	29	29	29	62	62	-79	1291	1170	1211	41	800
4	846	213	451	664	125	110	235	105	5	109	22	22	8	21	28	30	30	58	58	-110	1296	1147	1186	40	807
5	865	213	424	636	125	124	249	105	0	105	33	33	8	22	30	31	31	63	63	-125	1314	1147	1189	42	822
6	909	214	390	603	125	121	245	104	-12	92	81	81	8	37	45	61	61	70	70	-129	1359	1198	1230	32	876
7	905	157	417	573	107	125	232	104	-6	99	86	86	8	52	59	49	49	69	69	-79	1280	1168	1202	34	871
8	767	155	483	639	95	129	223	98	6	104	89	89	8	51	59	43	43	67	67	127	1123	1223	1250	27	740
9	775	198	451	649	101	114	215	98	9	107	88	88	8	38	46	40	40	68	68	65	1179	1213	1245	31	744
10	821	221	469	690	101	100	201	98	7	104	86	86	8	35	43	29	29	68	68	13	1249	1222	1261	39	782
11	739	245	475	720	102	85	187	85	8	93	78	78	8	32	40	33	33	68	68	74	1179	1219	1254	34	705
12	723	248	487	735	102	79	181	84	17	101	78	78	8	31	38	40	40	69	69	102	1164	1240	1266	26	697
13	716	245	502	747	100	96	196	84	17	100	75	75	8	32	40	37	37	69	69	136	1153	1264	1290	26	691
14	724	254	486	740	108	61	169	84	20	104	68	68	8	36	44	41	41	68	68	77	1178	1234	1256	21	703
15	738	257	468	725	135	56	191	90	14	104	66	66	8	44	51	46	46	71	71	18	1228	1256	1246	-9	748
16	753	257	514	771	132	122	254	89	21	109	79	79	8	53	60	57	57	73	73	196	1238	1403	1434	31	722
17	884	238	570	808	132	89	221	94	18	112	82	82	8	54	62	58	58	84	84	96	1356	1426	1452	25	859
18	956	224	754	978	165	104	269	98	69	167	92	92	8	55	63	70	70	100	100	315	1450	1738	1765	27	930
19	969	214	796	1011	177	64	241	98	57	155	103	103	8	57	65	71	71	102	102	313	1466	1748	1779	31	938
20	968	223	810	1033	195	77	273	97	60	157	100	100	8	55	63	64	64	101	101	330	1491	1792	1822	30	938
21	972	230	784	1015	196	72	268	98	47	144	105	105	8	51	59	58	58	100	100	282	1504	1749	1786	37	935
22	971	244	737	981	170	81	251	98	52	150	102	102	8	43	51	52	52	92	92	225	1490	1678	1715	38	933
23	969	241	686	928	164	52	216	98	58	156	87	87	8	34	42	41	41	77	77	99	1481	1547	1580	33	936
24	967	252	597	849	141	90	231	98	43	141	75	75	8	29	37	38	38	73	73	8	1467	1443	1474	31	936
Max	972	257	810	1033	196	129	273	105	69	167	105	105	8	57	65	71	71	102	102	330	1504	1792	1822	42	938
Min	716	155	390	573	95	52	169	84	-12	92	22	22	7	21	28	27	27	58	58	-129	1123	1147	1186	-9	691

HOURLY DATA ON **MINIMUM DEMAND MET DAY**

DATE:- **16.09.2012**

All figures in MW

HRS.	Total ISGS Injection (MW)	STATE SECTOR																		ER					Total Drawal by States
		ASEB			MeSEB			Tripura			Manipur		Mizoram			Nagaland		Ar. Pradesh			Total N.E.R GEN	Total Demand Met	Gross Demand met	Actual Loss	
		GEN	Drawal	Demand Met	GEN	Drawal	Demand Met	GEN	Drawal	Demand Met	Drawal	Demand Met	GEN	Drawal	Demand Met	Drawal	Demand Met	Drawal	Demand Met						
1	793	257	482	740	125	72	197	98	43	141	29	29	8	22	30	29	29	69	69	-21	1281	1233	1260	26	767
2	797	251	466	716	125	75	200	98	37	134	21	21	8	24	31	28	28	68	68	-69	1278	1199	1210	11	787
3	797	240	445	685	125	99	223	98	24	121	19	19	8	23	30	29	29	64	64	-59	1267	1172	1209	37	761
4	798	232	439	671	125	96	221	97	27	124	18	18	8	22	30	29	29	67	67	-75	1260	1161	1186	25	773
5	851	230	405	634	125	90	215	97	12	110	23	23	8	23	31	28	28	70	70	-146	1310	1111	1165	54	797
6	877	228	405	633	125	90	215	97	4	101	68	68	8	33	41	45	45	71	71	-145	1335	1174	1202	29	848
7	882	222	426	648	107	102	209	97	7	103	78	78	8	51	59	61	61	81	81	-51	1315	1239	1264	25	856
8	874	223	432	655	95	93	188	98	11	109	86	86	8	52	60	49	49	85	85	-36	1298	1233	1261	28	846
9	851	223	447	670	101	87	187	98	14	112	88	88	8	37	45	44	44	80	80	-21	1280	1226	1259	32	818
10	783	231	449	680	101	114	215	98	11	109	87	87	8	32	39	56	56	79	79	73	1220	1266	1292	26	757
11	787	202	494	696	102	72	174	92	18	110	80	80	8	25	32	55	55	77	77	50	1190	1224	1241	16	771
12	787	207	499	706	102	84	186	91	18	110	84	84	8	29	37	60	60	74	74	81	1195	1256	1276	19	768
13	778	211	492	704	100	74	174	77	39	116	85	85	8	29	36	60	60	69	69	95	1174	1244	1269	25	753
14	776	216	475	691	108	107	214	77	34	111	72	72	8	29	37	67	67	65	65	94	1184	1257	1278	21	755
15	811	219	461	680	135	99	234	77	37	114	77	77	8	35	43	71	71	74	74	62	1250	1294	1312	18	793
16	787	231	433	665	132	100	232	77	41	117	94	94	8	49	57	58	58	71	71	83	1234	1293	1318	25	762
17	836	243	498	741	132	86	218	98	43	141	88	88	8	49	57	60	60	87	87	102	1316	1392	1418	26	810
18	997	230	733	963	165	83	248	103	75	178	86	86	8	53	61	68	68	86	86	217	1502	1690	1719	29	967
19	929	213	759	972	177	63	241	103	64	167	91	91	7	53	60	70	70	101	101	292	1430	1700	1722	21	908
20	945	207	701	908	195	80	275	102	65	168	88	88	7	50	58	64	64	96	96	235	1458	1657	1693	36	909
21	952	208	736	944	196	65	261	104	68	172	92	92	7	43	50	57	57	92	92	232	1467	1668	1700	31	921
22	955	234	660	894	170	54	224	103	65	168	99	99	8	36	44	53	53	87	87	132	1470	1569	1602	33	922
23	969	251	570	821	164	42	206	103	54	157	82	82	8	29	37	42	42	68	68	-48	1495	1412	1447	35	934
24	977	244	484	728	141	65	206	104	47	150	78	78	8	22	30	38	38	65	65	-139	1473	1295	1334	39	938
Max	997	257	759	972	196	114	275	104	75	178	99	99	8	53	61	71	71	101	101	292	1502	1700	1722	54	967
Min	776	202	405	633	95	42	174	77	4	101	18	18	7	22	30	28	28	64	64	-146	1174	1111	1165	11	753

ANNEXURES
&
EXHIBITS

RESERVOIR PARTICULARS OF THE MONTH :

Sep-12

Name of the Reservoirs	FRL	MDDL	Beginning of the month		End of the month	
			Level	Energy content(MU)	Level	Energy content(MU)
KHANDONG	719.3 M	704 M	712.80	9.99	718.90	21.93
KOPILI	609.5 M	592.83 M	609.60	98.20	609.04	98.20
LOKTAK	768.5 M	766.2 M	767.48	58.00	768.10	140.00
BARAPANI	3220 Ft	3150 Ft	3209.42	38.08	3217.64	47.38
GUMTI	93.55 M	83.6 M	88.80	11.06	88.45	10.12
DOYANG	333 M	306 M	324.00	36.10	321.10	27.20

FREQUENCY ANALYSIS FOR THE MONTH OF : Sep-12

Frequency	(Freq.in Hz)	(Time: H:M)	(Date:D.M.Y)
1. Maximum frequency	50.69	18:03	23-Sep-12
2. Minimum frequency	49.02	14:18	10-Sep-12
3. Monthly average	50.08		

Frequency in Hz as %age of time for the blocks :

f < 49.5	49.5 < f < 50.2	f >50.2
0.39	75.13	24.47

Daily Frequency Variation Index :

DATE	FVI	DATE	FVI
1-Sep-12	0.370	17-Sep-12	0.540
2-Sep-12	0.260	18-Sep-12	0.480
3-Sep-12	0.300	19-Sep-12	0.480
4-Sep-12	0.310	20-Sep-12	0.480
5-Sep-12	0.460	21-Sep-12	0.290
6-Sep-12	0.460	22-Sep-12	0.200
7-Sep-12	1.767	23-Sep-12	0.300
8-Sep-12	0.360	24-Sep-12	0.170
9-Sep-12	0.430	25-Sep-12	0.230
10-Sep-12	0.380	26-Sep-12	0.220
11-Sep-12	0.280	27-Sep-12	0.240
12-Sep-12	0.240	28-Sep-12	0.250
13-Sep-12	0.270	29-Sep-12	0.430
14-Sep-12	0.560	30-Sep-12	0.200
15-Sep-12	0.280		
16-Sep-12	0.490	Average FVI	0.391

Annexure-III

Details of Scheduled Bilateral Exchanges within the Region in

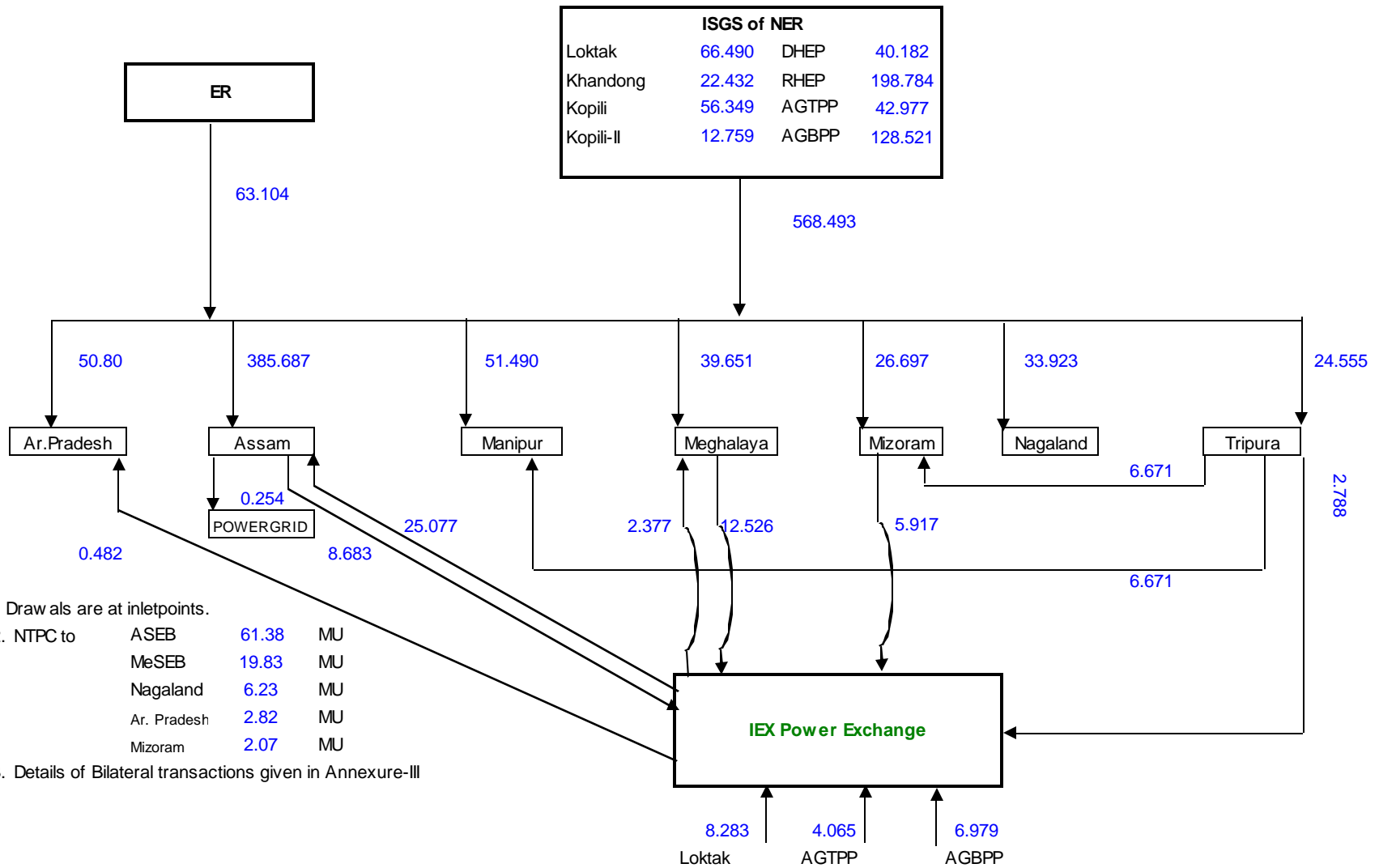
Sep-12

Sl.No.	From	To	Energy (At Seller Injn. Point) (MWH)		Energy (At State Periphery) (MWH)
1	Tripura (Baramura-IV)	Manipur	-3322.625000		-3247.387451
2	Tripura (Baramura-IV)	Mizoram	-3322.625000		-3227.708614
3	Tripura (Baramura-V)	Manipur	-3348.750000		-3273.441173
4	Tripura (Baramura-V)	Mizoram	-3348.750000		-3253.606028
5	ASEB	POWERGRID^	253.916750	^ The actual energy consumed by POWERGRID	

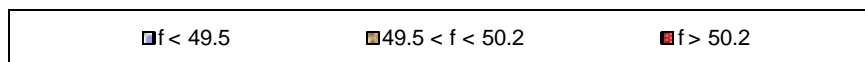
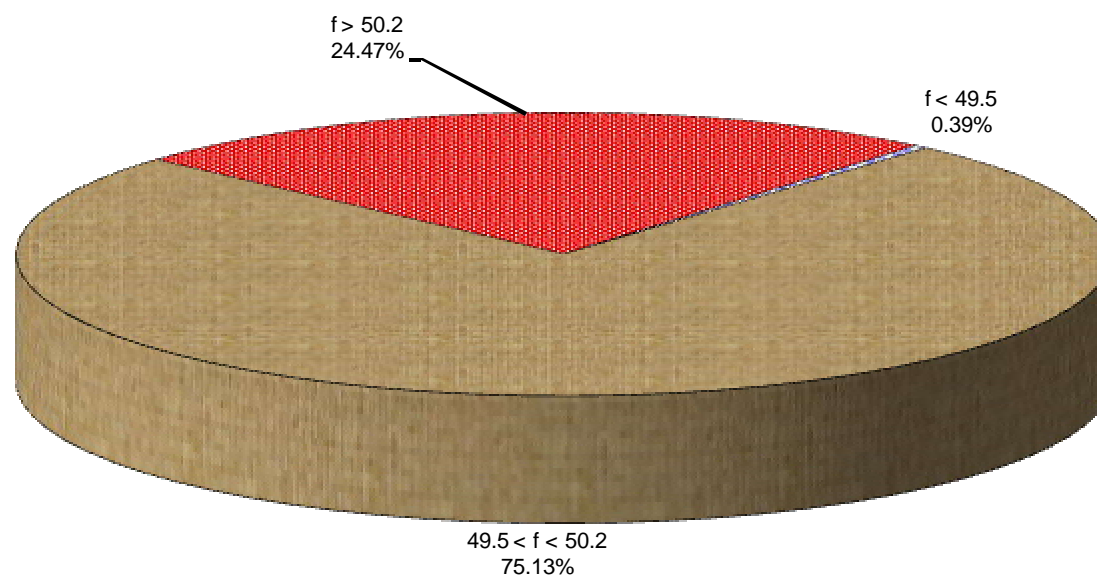
Scheduled Bilateral Exchange with SEBs / Organisations in other Regions

Sl.No.	From	To	Energy (At Seller Periphery) (MWH)	Energy (At NER-ER Periphery) (MWH)	Energy (At Buyer Periphery) (MWH)
1	LBHP	APDCL (PTC)		8400.000000	8282.400000
2	LAPL	APDCL (PTC)		18186.000000	17957.760000
3	LAPL	APDCL (PTC)		6425.930000	6341.630000
4	MeECL	WBSEDCL (NVVN)	-8791.260000	-8652.125000	
5	MeECL	UPPCL (NVVN)	-304.200000	-300.000000	
6	TSECL	WBSEDCL (NVVN)	-127.350000	-125.820000	
7	Farakka*	Ar. Pradesh	1172.871375	1154.975000	1143.764963
8	Kahalgaon 1*	Ar. Pradesh	996.895125	988.525000	978.849500
9	Talcher*	Ar. Pradesh	646.105500	630.950000	624.709625
10	Farakka*	Assam	11929.604525	11766.150000	11616.671688
11	Kahalgaon 1*	Assam	8527.621575	8382.350000	8275.172550
12	Kahalgaon 2*	Assam	35266.795850	34679.850000	34236.254100
13	Talcher*	Assam	5658.234450	5582.475000	5510.579088
14	Farakka 3*	Assam	13472.675000	13292.875000	13124.204713
15	Farakka*	MeECL	3644.670375	3590.950000	3534.566150
16	Kahalgaon 1*	MeECL	3076.097600	3031.400000	2983.546050
17	Kahalgaon 2*	MeECL	11151.556000	10961.875000	10788.770725
18	Talcher*	MeECL	1952.702125	1930.450000	1899.792150
19	Farakka*	Nagaland	2631.073250	2596.875000	2563.885000
20	Kahalgaon 1*	Nagaland	2210.315300	2179.050000	2151.193100
21	Talcher*	Nagaland	1384.441075	1361.250000	1343.709338
22	Farakka*	Mizoram	866.225800	849.575000	836.233025
23	Kahalgaon 1*	Mizoram	736.243475	721.425000	710.04085
24	Talcher*	Mizoram	465.735	455.075000	447.841625
Bilateral exchange through IEX Power Exchange (-ve means injection, +ve means drawal)					
25	Ar. Pradesh			486.700000	482.380000
26	Assam		-8683.450000	-8570.140000	
27	Assam			25400.000000	25077.335000
28	MeECL		-12526.357500	-12315.620000	
29	MeECL			2416.897500	2376.762500
30	Mizoram		-5916.817500	-5857.107500	
31	Tripura		-2787.835000	-2749.642500	
32	NHPC (Loktak)		-8282.747500	-8.201600	
33	NEEPCO (AGBPP)		-6978.500000	-6887.462500	
34	NEEPCO (AGTPP)		-4065.087500	-4012.697500	

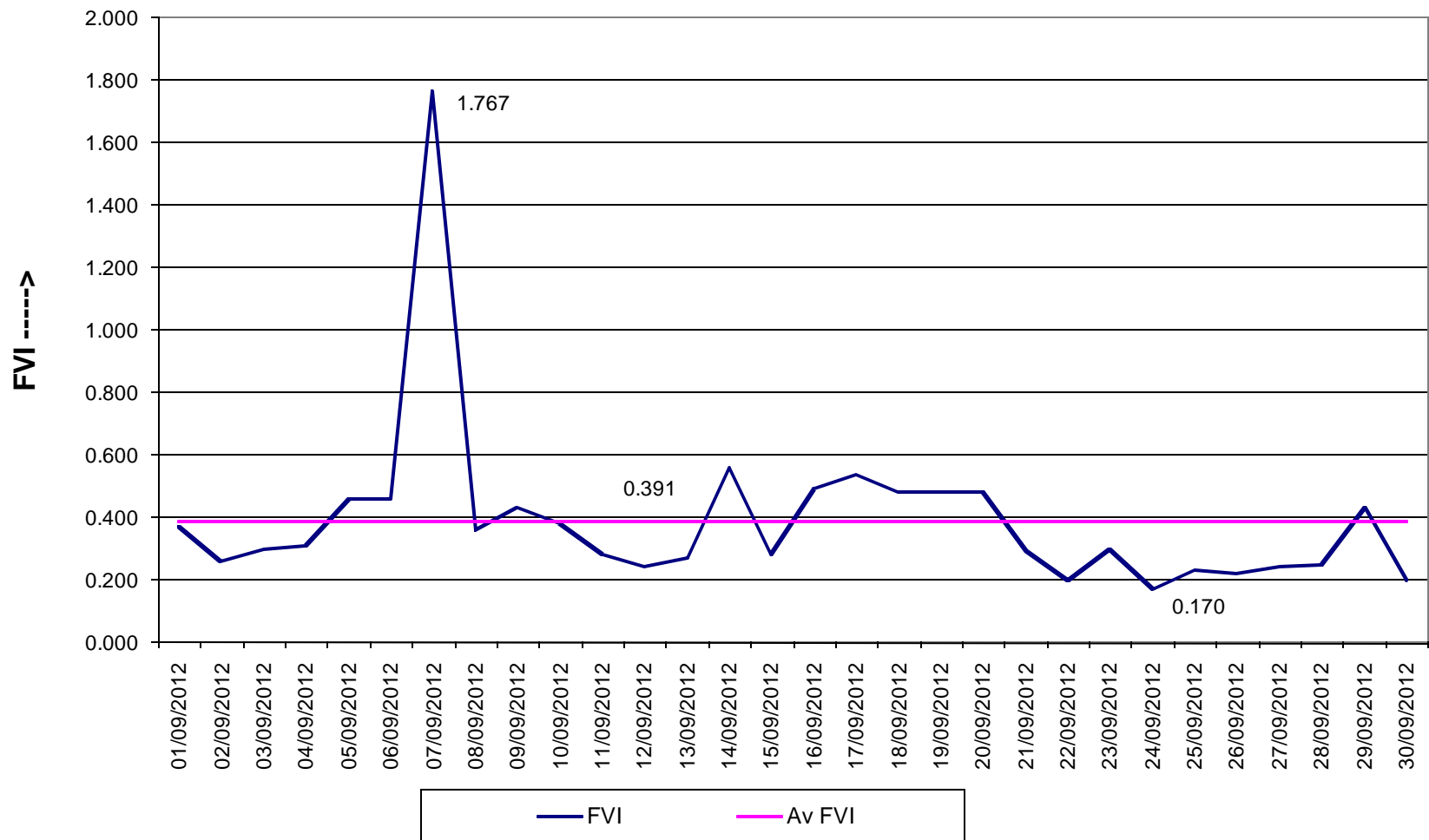
ENERGY EXCHANGE(in MU) IN NER DURING September, 2012



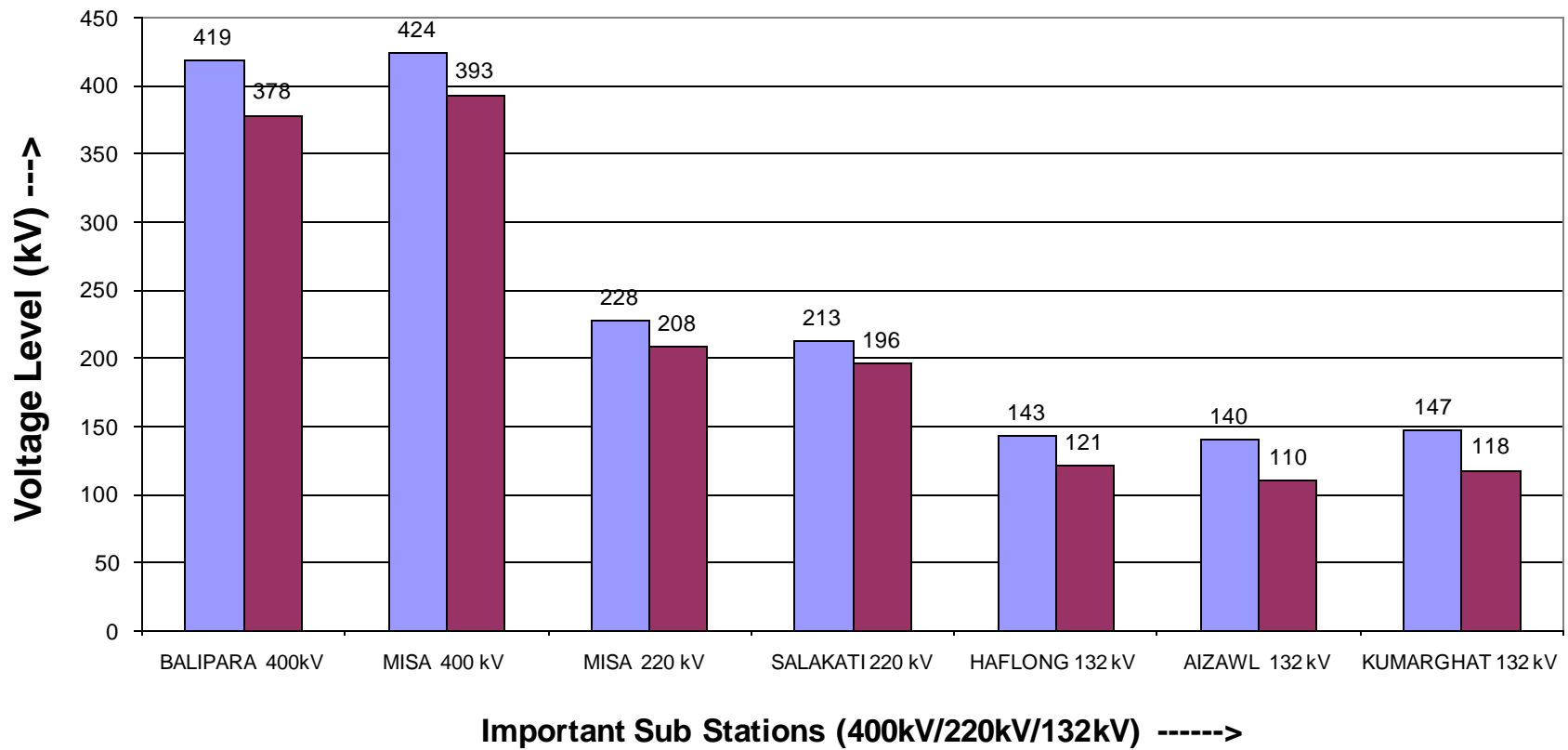
Frequency Duration for September, 2012



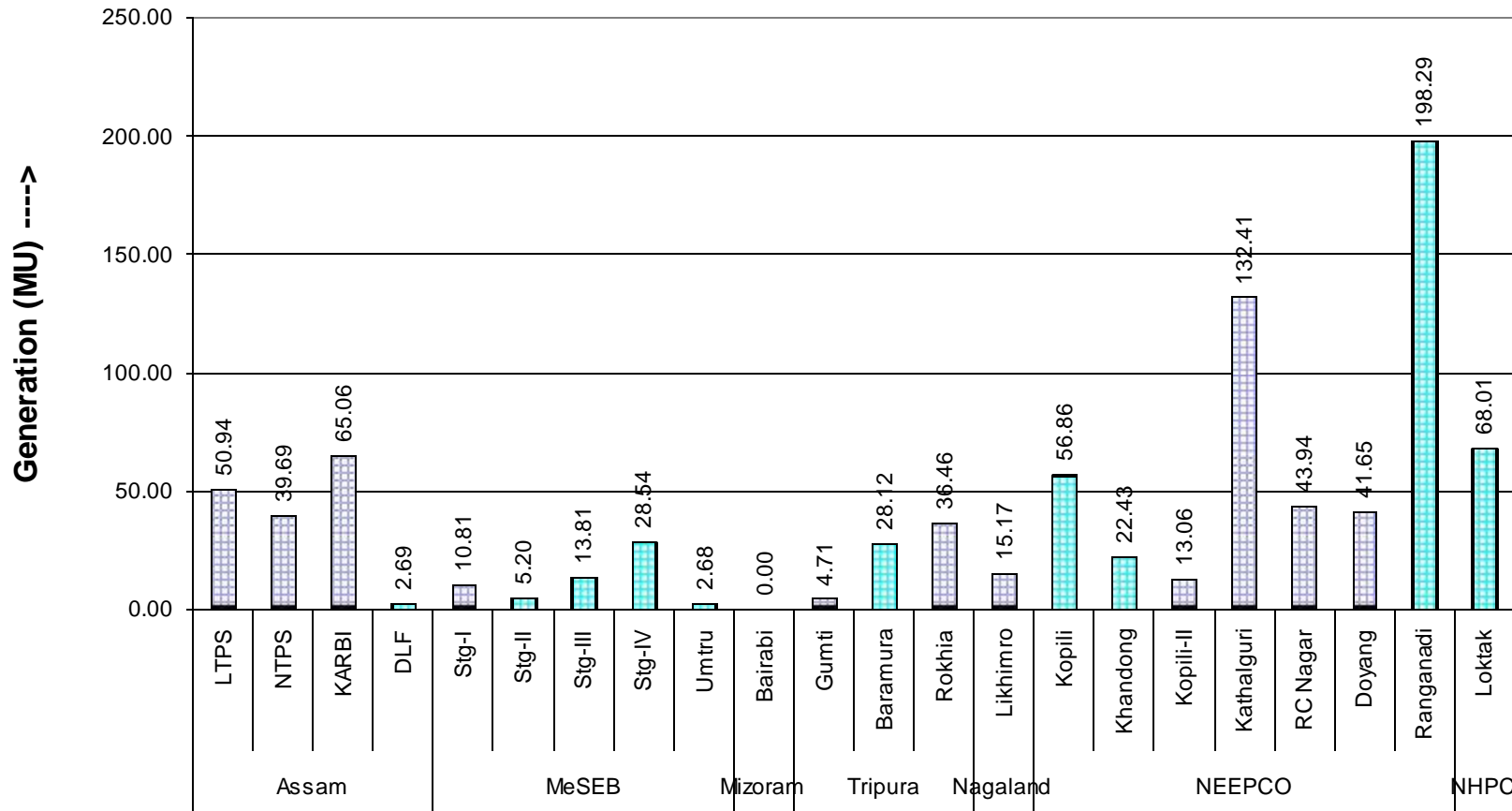
FVI Characteristics for September, 2012



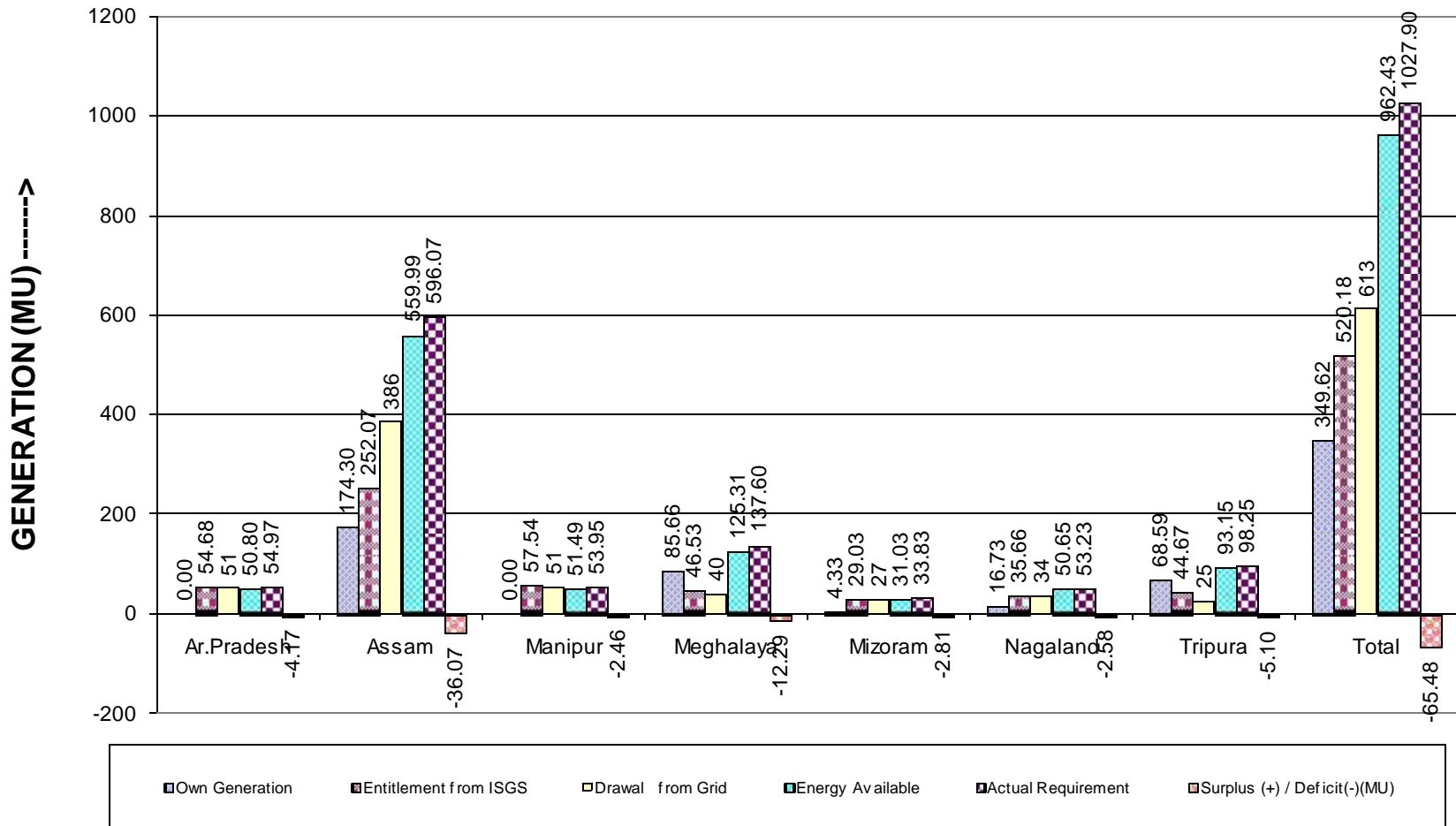
Maximum & Minimum Voltage Levels of Important Substations in NER during September, 2012



State and Central Sector Generation (MU) in NER in September, 2012



NER States Energy Scenario in September, 2012



Reservoir Statistics of NER in September, 2012

