

भारत सरकार Government of India

शक्ति विभाग Ministry of Power

केन्द्रीय बिजली प्राधिकरण

Central Electricity Authority

उत्तर-पूर्व क्षेत्रीय बिजली प्राधिकरण

North Eastern Regional Power Committee

शिल्लॉंग Shillong

Progress Report

For the month of

March, 2012

CONTENTS

Sl. No.	Topics	Page No.
1	Brief Highlights of North Eastern Regional Power System	1
2	Salient Features	2
<u>DETAILS OF THE REPORT</u>		
3	Monthly Power Supply Position:	
	(i) Energy generation in the Region	3
	(ii) Requirement Vs Availability in the Region	3
	(iii) Estimation of Peak Demand (MW)	4
	(iv) Estimation of Energy Requirement (MU)	4
4	Station wise Energy Generation (MU) & Peak Generation (MW):	
	(i) State Sector	5, 6
	(ii) Central Sector	7
5	Plant Load Factor (PLF)	8
6	Voltage Profile of Important Sub-Stations	8
7	(i) Inter Regional Energy Exchange	9
	(ii) Major Grid disturbances	9
	(iii) Meetings held by NERPC	9
8	Status of progress of:	
	(i) Generating Units	10
	(ii) Transmission Lines	11, 12
9	Commercial Status:	
	(i) UI Accounting	13
	(ii) Schedule and CS Share Allocation	14, 15
10	NER Grid Status on (i) Regional Peak Demand day	16
	(ii) Regional Minimum Demand day	17
<u>ANNEXURES</u>		
A-1	Major Reservoir Levels	I
A-2	Frequency Analysis and it's Profile	II
A-3	Scheduled Bilateral Exchanges	III
A-4	Energy Exchanges	IV
<u>EXHIBITS</u>		
B-1	Frequency Profile:	
	(i) Duration of frequency in different ranges	I
	(ii) Frequency Variation Index	II
B-2	Voltage Profile:	
	(i) Voltage Profile of Important Sub-Stations	III
B-3	Energy Generation:	
	(i) Energy Generation by Constituents during the month	IV
	(ii) Energy scenario of State's during the month	V
B-4	Reservoir profile :	
	(i) Reservoir statistics for the month	VI

NORTH EASTERN REGIONAL POWER COMMITTEE

Brief highlights of North Eastern Regional Power System for the month of March, 2012

- ❖ The maximum unrestricted demand during the month of **March, 2012** was **1859 MW**, which was **1813 MW** in the month of **February, 2012**. The peak demand met in NER during the period under review was **1625 MW**, which was **1620 MW** last month.
- ❖ The energy requirement during the month of **March, 2012** was **905.64 MU**, which was **832.63 MU** in the month of **February, 2012**. The energy availability in NER during the period under review was **818.41 MU**, which was **742.76 MU** last month.
- ❖ The maximum, minimum & average system frequency were **50.68, 49.02 & 49.90 Hz** respectively. The maximum, minimum & average FVI were **1.00, 0.19 & 0.505** respectively. The average FVI was **less** than its previous month's figure. (refer Annex-II).
- ❖ Maximum export of power from NER to ER was **173 MW** (on **03/03/12** at **19:42 hrs**) and that from ER to NER was **695 MW** (**31/03/12** at **22:18 hrs**). Total net energy import during the month was **334.89 MU** (from ER).

**SALIENT FEATURES OF
NORTH EASTERN REGIONAL GRID FOR MARCH, 2012**

1	New unit/ transmission lines/Transformers commissioned during this month	Nil	
2	Number of total grid disturbance during this month	Nil	
		Mar-12	Mar-11
3	Installed Capacity of the Region (in MW)(grid)	2133.32	2054.12
4	Energy Generation in MU (Gross)::		
	Thermal	390.354	431.663
	Hydel	113.672	176.703
	Diesel / Oil	0.000	0.000
	Total	504.026	608.366
5	Demand in MW ::		
	Registered Peak demand	1859.00	1670.00
	Peak demand met	1624.85	1555.00
	Shortage (% age)	-12.60	-6.89
6	Regional Energy(Gross) in MU ::		
	Energy requirement	905.64	811.09
	Energy availability	818.41	758.68
	Surplus (+) / Deficit (-) (% age)	-9.63	-6.46
7	Inter Regional Energy Exchange in MU ::		
	NER ----> ER	2.615	1.877
	ER ----> NER	337.506	182.971
	Net Import	334.891	181.09
8	Frequency profile ::		
	Average frequency (Hz)	49.90	49.88
	Average Frequency Variation Index	0.505	0.650
9	Load Factor (in %)	59.17	61.06

ENERGY GENERATION IN THE REGION FOR THE MONTH OF Mar-12

All figures in MU

Constituents	Hydro		Coal / Oil fired		Gas Based(OpenCycle)		Gas Based(Com Cycle)		Total(gen)	Total(gen)
	Gross	Net	Gross	Net	Gross	Net	Gross	Net	Gross	Net
	A	B	C	D	E	F	G	H	I	J
State Sector :										
Assam	16.140	15.979	0.000	0.000	77.642	76.866	49.555	48.068	143.337	140.913
Meghalaya	20.581	20.375	0.000	0.000	0.000	0.000	0.000	0.000	20.581	20.375
Mizoram	0.000	0.000	0.000	0.000	0.000	0.000	0.000	0.000	0.000	0.000
Tripura	0.000	0.000	0.000	0.000	69.609	68.912	0.000	0.000	69.609	68.912
Nagaland	2.456	2.431	0.000	0.000	0.000	0.000	0.000	0.000	2.456	2.431
Total (State Sector)									235.983	232.632
Central Sector :										
NEEPCO :										
Khd+Kop+Kop-II	25.937	25.678	0.000	0.000	0.000	0.000	0.000	0.000	25.937	25.678
K'guri	0	0	0.000	0.000	0	0	144.664	140.324	144.664	140.324
RCNagar	0	0	0	0	57.533	56.958	0	0	57.533	56.958
Doyang	4.227	4.185	0	0	0	0	0	0	4.227	4.185
Ranganadi	31.116	30.805	0	0	0	0	0	0	31.116	30.805
NHPC :										
Loktak	13.533	13.397	0.000	0.000	0.000	0.000	0.000	0.000	13.533	13.397
Total (Central Sector)									277.010	271.347
Total NER	113.989	112.850	0.000	0.000	204.784	202.736	194.219	188.393	512.993	503.978

REQUIREMENT Vs AVAILABILITY IN THE REGION

STATES	ENERGY requirement (MU) at 50 Hz				POWER requirement (MW) at 50 Hz			
	Availability & L/S at prevailing freq.				Availability & L/S at prevailing freq.			
	Requirt.	Availy.	Shortfall	%Shortfall	Requirt.	Availy.**	Shortfall	%Shortfall
Ar.Pr.	54.99	52.23	2.76	5.03%	101	97	4	3.97%
Assam	487.58	459.74	27.84	5.71%	1032	978	54	5.21%
Manipur	36.72	34.42	2.30	6.26%	105	103	2	2.22%
M'laya	167.64	122.10	45.54	27.17%	292	253	39	13.35%
Mizoram	29.69	26.73	2.96	9.97%	75	73	2	2.31%
Nagaland	46.02	42.98	3.04	6.61%	101	96	5	5.09%
Tripura	83.00	80.23	2.78	3.35%	181	171	10	5.75%
REGION	905.64	818.41	87.23	9.63%	1859	1625	234	12.60%

ESTIMATION OF PEAK DEMAND (in MW)

Constituents	Peak Demand Met	Date	Freq. (Hz)	Freq. Corr.**	L/S	Estimated Peak demand at 50 Hz
Arunachal Pradesh	96.92	19/03/2012	49.68	0.93	3	100.93
Assam	978.00	03/03/2012	49.94	1.76	52	1031.76
Manipur	103.00	17/03/2012	49.89	0.34	2	105.34
Meghalaya	253.00	14/03/2012	49.74	1.97	37	291.97
Mizoram	73.40	03/03/2012	49.94	0.13	2	75.13
Nagaland	95.54	20/03/2012	49.77	0.66	4	100.66
Tripura	171.00	29/03/2012	49.72	1.44	9	181.44
REGION	1624.85	18/03/2012	49.71	14.14	220	1859.14

** Freq.Correction = Demand met x 0.03 x (50 - Av. Freq.)

ESTIMATION OF ENERGY REQUIREMENT (in MU)

Average Frequency 49.90 Hz

Constituents	Generation	Energy drawal from grid			Over(+) / Under(-) Drawal	Energy Availability*	Freq. Corr.**	L / S	Actual Requirement
		Entitlement frm ISGS of NER	Entitlement frm ISGS of ER	Drawal					
Ar.Pr.	0.000	19.112	4.806	52.226	28.309	52.226	0.157	2.61	54.991
Assam	140.913	135.192	94.572	318.826	89.062	459.739	1.379	26.46	487.582
Manipur	0.000	24.477	0.000	34.416	9.939	34.416	0.103	2.20	36.715
M'laya	20.375	18.865	30.477	101.723	52.381	122.098	0.366	45.18	167.640
Mizoram	0.000	14.582	3.535	26.727	8.610	26.727	0.080	2.88	29.686
Nagaland	2.431	15.625	10.627	40.545	14.294	42.977	0.129	2.91	46.020
Tripura	68.912	24.403	0.000	11.314	-13.089	80.226	0.241	2.54	83.005
REGION	232.632	252.255	144.017	585.778	189.507	818.410	2.455	84.77	905.639

*Energy availability means energy consumed by constituents

** Freq.Correction = Demand met x 0.03 x (50 - Av.Freq.)

ENERGY GENERATED (MU) AND PEAK GENERATION (MW) FROM GENERATING STATIONS/UNITS:

Sl. No.	Power Stations / Units	Installed Capacity(MW)	Peak Generation(MW)	Energy Generation (MU)	
				Mar-12	Mar-11
STATE SECTOR : HYDRO					
ASSAM :: HYDRO					
1	KARBI HEP U - 1	50.00	46.80	0.000	7.430
2	KARBI HEP U - 2	50.00	73.70	16.140	3.340
TOTAL		100.00		16.140	10.770
MEGHALAYA :: HYDRO					
1	STAGE - 1	36.00	18.53	4.230	3.610
2	STAGE - 2	18.00	10.10	2.133	7.690
3	STAGE - 3	60.00	30.94	5.350	9.600
4	STAGE - 4	60.00	48.05	5.928	1.750
5	UMTRU	11.20	12.00	2.623	0.330
TOTAL		185.20		20.264	22.980
NAGALAND :: HYDRO					
6	LIKIMRO - 1				
7	LIKIMRO - 2	24.00	12.00	2.456	2.940
8	LIKIMRO - 3				
TOTAL		24.00		2.456	2.940
TRIPURA :: HYDRO					
9	GUMTI - 1	5.00	3.51	0.000	0.000
10	GUMTI - 2	5.00	4.36	0.000	2.598
11	GUMTI - 3	5.00	4.36	0.000	2.585
TOTAL		15.00		0.000	5.183
TOTAL STATE (HYDRO) :		324.20		38.860	41.873

ENERGY GENERATED (MU) AND PEAK GENERATION (MW) FROM GENERATING STATIONS/UNITS:

Sl. No.	Power Stations / Units	Installed Capacity(MW)	Peak Generation(MW)	Energy Generation (MU)	
				Mar-12	Mar-11
STATE SECTOR : THERMAL/GAS					
MIZORAM ::Thermal					
1	Bairabi	22.92	0.00	0.000	0.000
TRIPURA :: THERMAL					
1	BARAMURA - 1	5.00	Baramura Stn. Peak = 21.7 MW	0.000	0.000
2	BARAMURA - 2	5.00		0.000	0.000
3	BARAMURA - 3	6.50		0.000	0.000
4	BARAMURA - 4	21.00		14.637	15.104
5	BARAMURA - 5	21.00		15.476	15.072
6	ROKHIA - 1	8.00	Rokhia Stn. Peak = 47.9MW	0.000	0.000
7	ROKHIA - 2	8.00		0.000	0.000
8	ROKHIA - 3	8.00		0.000	2.400
9	ROKHIA - 4	8.00		4.129	4.384
10	ROKHIA - 5	8.00		0.000	0.000
11	ROKHIA - 6	8.00		5.007	0.000
12	ROKHIA - 7	21.00		14.981	15.247
13	ROKHIA - 8	21.00		15.379	15.499
	TOTAL	148.50		69.609	67.706
ASSAM :: THERMAL					
1	LTPS - 1	15.00	18	6.350	7.910
2	LTPS - 2	15.00	15.1	6.950	8.010
3	LTPS - 3	15.00	0.0	0.000	10.950
4	LTPS - 4	15.00	15.5	7.360	8.550
5	LTPS - 5	20.00	30.21	14.034	14.470
6	LTPS - 6	20.00	23.81	15.941	15.370
7	LTPS - 7	20.00	21.8	13.475	1.350
8	NTPS - 1	20.00	20.5	12.781	13.610
9	NTPS - 2	21.00	21.0	13.241	14.860
10	NTPS - 3	21.00	18.0	10.756	9.600
11	NTPS - 4	11.00	11.5	6.290	6.080
12	NTPS - 5	22.00	0.0	0.000	0.000
13	NTPS - 6	22.00	19.5	6.487	8.320
14	DLF	24.50	7.45	4.883	5.110
	TOTAL	261.50		118.548	124.190
TOTAL STATE THERMAL/GAS :		432.92		188.157	191.896
TOTAL SC GEN(HY+TH/GAS)		757.12		227.016	233.769

ENERGY GENERATED (MU) AND PEAK GENERATION (MW) FROM GENERATING STATIONS/UNITS:

Sl. No.	Power Stations / Units	Installed Capacity(MW)	Peak Generation(MW)	Energy Generation (MU)	
				Mar-12	Mar-11
CENTRAL SECTOR : HYDRO					
1	KHANDONG - 1	25.00	23.32	0.249	5.180
2	KHANDONG - 2	25.00	25.83	0.997	3.720
3	KOPILI Stg - II	25.00	26.42	3.509	4.100
4	KOPILI - 1	50.00	100.00	8.238	0.000
5	KOPILI - 2	50.00	55.09	3.459	9.600
6	KOPILI - 3	50.00	100.00	0.000	18.030
7	KOPILI - 4	50.00	100.00	9.485	19.100
8	DOYANG -1	25.00	26.49	1.618	1.700
9	DOYANG -2	25.00	18.74	0.818	2.110
10	DOYANG -3	25.00	27.87	1.792	2.110
11	LOKTAK - 1	35.00	37.00	4.999	0.000
12	LOKTAK - 2	35.00	36.93	4.142	0.000
13	LOKTAK - 3	35.00	37.09	4.392	24.310
14	RANGANADI - 1	135.00	136.14	11.152	15.780
15	RANGANADI - 2	135.00	136.48	9.515	11.700
16	RANGANADI - 3	135.00	137.37	10.449	17.390
TOTAL HYDRO :		860.00		74.813	134.830
CENTRAL SECTOR : THERMAL/GAS					
1	KATHALGURI - 1	33.50	36.24	10.897	22.310
2	KATHALGURI - 2	33.50	33.74	9.187	21.610
3	KATHALGURI - 3	33.50	35.33	23.410	22.950
4	KATHALGURI - 4	33.50	35.68	21.843	21.820
5	KATHALGURI - 5	33.50	34.51	23.070	21.440
6	KATHALGURI - 6	33.50	34.95	23.018	22.820
7	KATHALGURI - 7	30.00	0.00	0.000	15.790
8	KATHALGURI - 8	30.00	25.23	15.344	17.630
9	KATHALGURI - 9	30.00	26.52	17.896	17.700
10	R.C.NAGAR - 1	21.00	22.59	14.664	14.201
11	R.C.NAGAR - 2	21.00	21.94	14.469	13.985
12	R.C.NAGAR - 3	21.00	22.25	14.387	13.925
13	R.C.NAGAR - 4	21.00	20.97	14.013	13.586
TOTAL THERMAL/GAS :		375.00		202.197	239.767
TOTAL CS (HY + TH/GAS) :		1235.000		277.010	374.597
TOTAL NER GEN(HY+TH/GAS) :		1992.120		504.026	608.366

Plant Load Factor (PLF) and Voltage Profile :

Mar-12

PLANT LOAD FACTOR OF THE THERMAL/ GAS STATIONS IN NER

Sl. No.	Power Station	State/ Constituent	Installed Capacity (MW)	Generation (in MU)	Stationwise PLF (%)
1	LTPS*	AEGCL	120.00	64.110	71.81
2	NTPS*	AEGCL	117.00	49.555	56.93
3	Baramura	Tripura	58.50	30.113	69.19
4	Rokhia	Tripura	90.00	39.496	58.98
5	AGBPP	NEEPCO	291.00	144.664	66.82
6	AGTPP	NEEPCO	84.00	57.533	92.06

*LTPS-- Lakwa Thermal Power Station, NTPS-- Namrup Thermal Power Station

VOLTAGE PROFILE :**A. MAXIMUM AND MINIMUM VOLTAGE (kV) OF IMPORTANT SUB - STATIONS :**

Sl. No.	NAME OF S/S	MAXIMUM (kV)	MINIMUM (kV)
1	BALIPARA 400 kV	425	378
2	MISA 400 kV	430	375
3	MISA 220 kV	233	206
4	SALAKATI 220 kV	410	77
5	HAFLONG 132 kV	142	124
6	AIZAWL 132kV	142	112
7	KUMARGHAT 132kV	136	121

Voltage Range in kV as percentage of time for the block

SUB-STATION	kV < 360	360<kV<380	380<kV<420	kV>420
MISA	0.12	0.01	88.92	10.94
BALIPARA	0.00	0.04	99.38	0.57

1 **INTER - REGIONAL EXCHANGE :**

All Fig in MU

NER to ER	2.615
ER to NER	337.506
NET IMPORT	334.891

2 **Major Grid Disturbances during this month**

Nil

3 **MEETING HELD BY NERPC DURING THIS MONTH**

1. 71st OCC Meeting was held on 12.03.12 at Guwahati.

2. 18th CC Meeting was held on 14.03.12 at Sonapur, Assam

PROGRESS OF GENERATION PROJECTS IN NER

Name of the Generation Scheme	No. of Units	Capacity (MW)	Commissioning Schedule	REMARKS
[A] NEEPCO				
1. Monarchak TGBPP		104	2013	Activities in progress
2. Tuirial HEP Mizoram	2	2 X 30	WORKS HELD-UP	Being reviewed by PIB
3. Kameng HEP A. Pradesh	4	4X150	2016-17	Activities in progress
4. Tuival H.E. Proj. Mizoram	3	3X70	2015	Status not available
5. Tipaimukh HEP		1500	2015	Activities in progress
6. Mawphu HEP	2	90	2015	UNDER CCEA
7. Pare HEP, Ar. Pradesh		110	2015	UNDER CCEA
[B] NHPC				
a). Loktak Downstream HEP	2	66	2014	Activities in progress
b) Subansiri Lower HEP		2000	2016-17	Activities in progress
c) Siang Middle HEP		2000	2016	Activities in progress
d) Subansiri Upper HEP		2000	DPR Under prep	
e) Subansiri Middle HEP		1000	DPR Under prep	
f) Dibang Multipurpose Project		3000	Under TEC	
[C] NTPC				
a). Bongaigaon TPS	3	3X250	2013-14	Activities in progress
[D] JV PROJECT				
a). Palatana CCPP	2	2X323.3	2012	Activities in progress
[E] ASSAM				
(a) Lakwa WHRP		37.2	2012	Activities in progress
(b) Namrup CCPP	2	2X40	2014	
[F] MIZORAM				
(a) Tuivai Hydrel Project	2	51	2015	Activities in progress
(b) Bairabi Dam Project	2	2 X 40	2015	Activities in progress
(G) MeECL				
(a) Myntdu - Leishka HEP	2+1	3x42	2011-12	Activities in progress
(b) New Umtru HEP	2	2X20	2014-45	Activities in progress

PROGRESS OF TRANSMISSION LINES IN NE REGION									
	Name of the line	Length	Comm'n'g Sch		Total no.	Stubs com -	Tower	Stringing	Remarks
		(ckt kms)	Ann.pl	Ant/revd	of locs .	pleted(nos)	Erected	complt-ckm	
A : Lines under ASEB.									
1	LILo of 400 kV D/C Ranganadi-Balipara at Kukurmara	20	Jul-13		20	20			Deposit work to PGCIL
2	220 kV, D/C Bongaigaon TPS (NTPC) -Rangia	360	Dec-13		479	6			Design apprvd, prototype test
3	220 kV, S/C BTPS(AEGCL) - Agia-Sarusajai-II	198	Mar-12		601	601	0		
4	220 kV S/C (on D/C) Namrup TPS-Mariani	141	May-13						Contract awarded
5	LILo of 220 kV D/C Agia-Sarusajai at Kukurmara	4	Feb-12		8	4			Work in progress
6	132 kV D/C BTPS - Kokrajhar	18	Dec-12	Aug-12	75				Work order placed
7	132 kV D/C Kokrajhar-Bilashipara-Gauripur	70	Oct-13	Dec-13	121				
8	132 kV D/C Kukurmara-Azara	6	Dec-12	May-12					Contract awarded
9	132 kV D/C Kukurmara- Boko	25	May-13						Row Problem
B : Lines under MeECL :									
1	LILo of 400kV D/C Silchar - Bongaigaon at Killing (Byt	9	Dec-12						Evaluation of tender in progress
2	132 kV S/C New Umtru HEP-Norbong (EPIP II)	3	Mar-12						
3	132 kV D/C Killing(Byrmihat)-EPIP I	6	Mar-12						Work in progress
4	132 kV D/C Mawngap - Sumer	33	Dec-11	Dec-12	102	100	96	30	
5	132 kV D/C Rongkhon - Ampati	33	Mar-12		103				Work in progress
6	132 kV S/C Nangalbibra - Agia	92	Mar-12		316	316	316	89	Work in progress
7	LILo of 132 kV S/C Agia-Nangalbibra at Mendipathar	5	Mar-12						
8	LILo of 132 kV D/C Mawlai-Cherrapunjee at Mawngap	5	Dec-11	Dec-12	15	15	10	5	
9	LILo of 132 kV D/C Mawlai-nangalbibra at Mawngap	3	Mar-12		13				Work in progress
C : Lines under Mizoram :									
1	LILo of 132 kV S/C Zemabak - W. Phaileng at Sinh	5	Dec-11						
D : Lines under TSECL :									
1	400 kV D/C Purba kanchan Bari- Surajmani Nagar	260	Mar-12						Fund not yet tied up.
2	132 kV D/C Surjyamani Nagar - 79 Tilla (Agartala)	36	Mar-12		41	18			Work in progress
3	132 kV D/C Surjyamani Nagar - Badarghat	6	Mar-12						Fund not yet tied up.
4	132 kV D/C Surjyamani Nagar - Budhjangnagar	36	Apr-12		63	25			ROW problem
5	132 kV D/C Surjyamani Nagar - Rokhia	35	Mar-12						Fund not yet tied up.
6	132 kV D/C Surjyamani Nagar - Udaipur	50	Mar-12						Fund not yet tied up.
E : Lines under NETC :									
1	400 kV D/C Palatana - Silchar	492	Feb-12		675	638	518	230	Forest clearance awaited
2	400 kV D/C Bongaigaon- Silchar	830	Jun-12	Jun-12	1125	765	471	108	Forest clearance awaited

	Name of the line	Length (ckt kms)	Comm'ing Sch		Total no. of locs	Stubs com - pleted(nos)	Tower Erected	Stringing complt-ckm	Remarks
			Ann.pl	Ant/revd					
F : POWERGRID Lines:									
1	+/- 800kv HVDC Bipole Biswanath Chariyali - Agra	1971	Aug-13	Sep-14	4228	2752	1408	4	Matching with HVDC Converter
2	400kV Balipara - Biswanath Chariyali D/C	130	Aug-13	Aug-13	167	137	121	60	Matching with L. Subansiri
3	LILO of 400 kv Ranganadhi Balipara D/C at Biswanath	54	Aug-13	Aug-13	76	70	36	4	Matching with Gen. of L.Subansi
4	132 kV D/C B. Chariyali-B. Chariyali (AEGCL)	32	Aug-13	Aug-13	55	21	2		
5	400 kV Kameng-Balipara D/C	110	Feb-13	Mar-14	142	54	4		Matching with Gen. of Kameng
6	400kV Balipara- Bongaigaon D/C line	596	Feb-13	Feb-13	838	778	557	160	Matching with Gen. of Kameng
7	400kV Lower Subansari-Biswanath Charrali line-I	334	Feb-13	Dec-13	432	297	213	38	Matching with Gen. Project
8	400kV Lower Subansari-Biswanath Charrali Line-II	340	Feb-13	Feb-13	442	315	195	30	Matching with Gen. Project
9	132 kV Kopili- Khandong-II	12	Sep-09		43	37	24	8	Forest clearance awaited
10	400 kV D/C Bongaigaon TPS-Bongaigaon line	6	Mar-12		11	8	4	0	
11	400kV D/C Pallatana- Surajmani –nagar line	70	Dec-11		87	78	38		Compl. of Suraj-maninagar by TSECL
12	400kV D/C Silchar-Purba Kanchan Bari line	244	Mar-12	Jun-12	325	240	118	10	ROW problem
13	400kV D/C Silchar-Melriat(New) line	320	Dec-12	Mar-13	400	124	68		1 st Stg Forest clearance awaited
14	400kV D/C Silchar-Imphal(New) line	280	Dec-12	Jun-12	389	22			Likely to be delayed
15	220kV D/C Mariani(New)-Mokikchung(PG)	112	Dec-12	Mar-13	160	11			Efforts to be made to match U#2 of Palatana GBPP
16	132kV Silchar-Badarpur(PG) SW Interconnecting line	42	Nov-11		69	68	64	28	To match with U#1 of Palatana
17	132kV D/C Melriat(New)- Melriat (Mizo) Interconnecting line	60	Dec-12	Mar-13	85				Melriat S/s by Mizoram
18	132kV D/C Silchar-Srikona (AEGCL) line	6	Dec-11		7	7	7	2	Award Placed
19	132kV D/C Silchar-Hailakandi (AEGCL) line	50	Dec-11		86	30	5		Completion matching with S/S
20	132kV D/C Mokikchung(PG)- Mokikchung(Naga) line	2	Dec-12	Mar-13	4				Efforts to be made to match U#2 of Palatana GBPP
21	132 kV S/C Pasighat-Roing line (on D/C)	70	Dec-12	Mar-13	550	67			Completion matching with S/S.
22	132 kV S/C Roing-Tezu line (on D/C)	60	Dec-12	Mar-13	550	67			Engg. in progress
23	132 kV S/C Tezu-Namsai line (on D/C)	90	Dec-12		180	8			Completion matching with S/S.
24	LILO of 400kV S/C Kathalguri -Misa line at Mariani(New)	2	Dec-12		20				
25	LILO of 132 kV S/C Loktak-Imphal line at Imphal (New)	60	Dec-12		150				
26	220 kV D/C Bongaigaon TPS (NTPC-Bongaigaon)	15	Dec-12		20				

UI Receivable/ Payable for the month of**Mar-12**

Organisation	Actual (MU)	Schedule (MU)	UI Energy (MU)	UI Receivable (Rs. in Lakhs)	UI Payable (Rs. in Lakhs)
Arunachal Pradesh	52.226	29.723	22.503	0.000	636.895
ASEB	318.826	303.057	15.768	52.151	471.324
Manipur	34.416	30.762	3.655	0.000	134.884
MeSEB	101.723	60.849	40.874	0.000	1159.057
Mizoram	26.727	18.136	8.592	0.000	238.450
Nagaland	40.545	25.977	14.568	0.000	421.542
Tripura	11.314	8.032	3.282	33.591	147.504

Entitlement, Schedule, Drawal and UI Charges**Mar-12**

Name of beneficiaries	Entit. from scheduled energy from ISGS in NER (Ex-PP State) (in MU)	Entit. from scheduled energy from ISGS in ER (Ex-PP State) (in MU)	Total Entitlement (Ex-PP State) (in MU) *	Schedule (Ex-PP State) (in MU)	Actual Drawal from Grid (MU)	Over Drawal (+) / Under Drawal (-) (MU)	UI Payable (-)/ Receivable (+) (Rs. In Cr)
Arunachal Pradesh	19.112	4.806	23.918	29.723	52.226	22.503	-6.369
ASEB	135.192	94.572	229.763	303.057	318.826	15.768	-4.192
Manipur	24.477	0.000	24.477	30.762	34.416	3.655	-1.349
MeSEB	18.865	30.477	49.342	60.849	101.723	40.874	-11.591
Mizoram	14.582	3.535	18.117	18.136	26.727	8.592	-2.385
Nagaland	15.625	10.627	26.251	25.977	40.545	14.568	-4.215
Tripura	24.403	0.000	24.403	8.032	11.314	3.282	-1.139

(Source : UI A/c, NERPC)

* In addition to total entitlement, bilateral exchanges and purchase/sell through traders/exchange are covered in Annexure-III

Schedule for ISGS's Generation and State's Draw for the month of

Mar-12

States	Schedule From ISGS(MWH)	Schedule from ER ISGS (MWH)	Total ISGS Schedule (MWH)	Ex.PP. Drawal (MWH)	Tr. Energy (MWH)
Arunachal Pradesh	19312.85	4891.80	24204.65	53975.03	53975.03
ASEB	137741.91	96254.10	233996.01	329500.42	329500.42
Manipur	24800.35		24800.35	35568.59	35568.59
MeSEB	19061.85	31019.28	50081.12	105129.17	105129.17
Mizoram	14804.30	4891.80	14804.30	27622.34	27622.34
Nagaland	15925.58	10815.88	26741.45	41902.95	41902.95
Tripura	24437.52		24437.52	11692.46	24437.52
Total	256084.35	147872.85	399065.40	605390.97	618136.02

ISGS	Schedule (MWH)	Injection (MWH)
LOKTAK	13252.45	12978.31
KHANDONG	1089.20	1143.84
KOPILI-I	20944.60	21048.88
KOPILI-II	3359.40	3400.45
DHEP	3779.50	3843.46
RHEP	30155.20	29991.19
AGTPP	50787.27	56453.22
AGBPP	132716.74	141640.83
Total	256084.35	270500.17

Source : Provisional REA for the month: **Mar-12**

Cumulative wt. Average Share Allocation (%) (Up to this month) in CS Stations

States	KOPILI	KOPILI-II	KHANDONG	RHEP	DHEP	AGBPP	AGTPP	Loktak HEP
	(200 MW)	(25 MW)	(50 MW)	(405 MW)	(75 MW)	(291 MW)	(84 MW)	(90 MW)
Arunachal Pradesh	5.191	5.992	4.194	18.462	6.852	5.694	6.132	4.940
Assam	53.455	52.355	56.285	43.328	43.808	56.503	45.585	29.445
Manipur	7.395	6.945	6.555	8.373	7.865	8.105	8.313	30.115
Meghalaya	17.395	13.675	16.905	11.505	11.455	11.815	11.813	12.393
Mizoram	4.610	6.040	3.940	5.700	5.250	5.410	5.980	5.020
Nagaland	6.147	5.735	6.653	5.335	17.967	5.805	5.377	6.435
Tripura	5.807	9.258	5.468	7.297	6.803	6.668	16.800	11.652
Total	100.00	100.00	100.00	100.00	100.00	100.00	100.00	100.00

Details of Fixed and Energy Charges of CS Stations for FY 2011-12

Projects	Installed Capacity (MW)	Design Energy (GWh)	Annual Fixed Charge (Rs. Crore)	Reference
KOPILI HEP	200	1186.14*	75.1117 *	*As per CERC order dated 30.09.2011 in petition No 294/2009.
KOPILI -II	25	86.3*	12.9511 **	* Provisional, ** As per CERC order dated 01.01.08 in pet. No 70/2006
KHANDONG HEP	50	277.61*	33.886 *	*As per CERC order dated 30.09.2011 in petition No 297/2009.
RHEP*	405	1509.69	290.7301	*As per CERC order dated 10.05.2011 in petition No.296/2009.
DHEP	75	227.24	58.5 *	*As per CERC order dated 03.10.07 in petition No 88/2007.
AGBPP	291	NA	233.81 *	As per CERC order dated 6.9.2011 in Pet.No295 / 2009
AGTPP	84	NA	67.9814 *	Base Rate of energy Charge as per the CERC Order
LOKTAK HEP	105	448.00	95.7935 *	*As per CERC order dated 11.03.11 in Pet.No 299/2009,^Base Engy. charge as per CERC order
				*As per CERC order dated 14.06.11 in Pet.No 108/2010

HOURLY DATA ON PEAK DEMAND MET DAY

DATE:- 23.03.2012

All figures in MW

HRS.	Total ISGS Injection (MW)	STATE SECTOR														ER					Total Drawal by States
		ASEB			MeSEB			Tripura			Manipur	Mizoram	Nagaland	ArPr	Total N.E.R GEN		Total Demand Met	Gross Demand met	Actual Loss		
		GEN	Drawal	Demand Met	GEN	Demand Met	Drawal	GEN	Demand Met	Drawal	DM	DM	DM	DM							
1	261.64	138	392.57	530.1	13	166.7	179.79	96	26.4	122.63	21.07	25.40	46.62	67.62	516.25	508.48	883.93	915.36	31.4	230.20	
2	267.59	139	388.42	527.1	0	132.2	132.23	96	21.3	117.40	18.24	25.66	50.37	71.03	472.48	502.32	845.92	878.67	32.7	234.84	
3	265.54	138	374.88	513.3	0	147.1	147.15	96	15.3	111.75	13.70	24.97	50.20	69.44	410.22	500.36	834.05	814.10	-20.0	285.50	
4	271.62	138	383.86	522.3	0	123.1	123.11	96	12.6	108.75	14.04	25.17	53.95	66.84	442.76	506.25	818.07	852.81	34.7	236.87	
5	277.59	139	401.33	540.4	0	119.1	119.08	96	13.0	108.84	17.60	26.88	49.94	69.01	455.17	512.52	835.88	871.76	35.9	241.71	
6	276.61	138	424.07	561.6	0	157.1	157.07	96	4.8	100.85	39.06	39.77	68.96	76.70	572.38	510.23	948.01	986.51	38.5	238.11	
7	268.29	137	485.01	622.3	0	153.0	153.03	96	7.4	103.85	40.29	39.79	59.82	63.32	612.47	502.09	985.94	1018.02	32.1	236.21	
8	268.06	138	500.74	638.8	24	168.5	192.79	96	7.4	103.67	33.90	39.38	58.96	65.26	636.82	526.76	1012.19	1042.92	30.7	237.33	
9	265.02	137	420.83	557.4	24	156.5	180.71	96	5.6	101.23	45.81	32.46	51.43	63.72	534.32	521.53	912.88	935.89	23.0	242.02	
10	253.60	137	436.78	574.2	24	150.5	174.76	96	9.9	105.43	39.86	35.09	48.97	58.99	533.39	510.77	917.56	924.35	6.8	246.80	
11	271.19	145	419.72	565.2	24	144.4	168.56	92	12.7	104.77	39.11	33.51	42.25	54.76	501.44	532.82	892.02	918.07	26.0	245.15	
12	269.93	145	400.90	545.7	0	146.7	146.73	92	12.3	103.88	34.24	33.49	46.48	57.50	484.52	506.28	876.48	899.20	22.7	247.22	
13	266.71	145	402.78	547.9	6	128.0	134.06	91	12.3	103.22	36.00	44.48	47.89	59.37	490.07	508.78	875.92	901.82	25.9	240.81	
14	267.10	136	421.07	557.3	6	145.4	151.54	53	17.5	70.67	39.46	44.80	53.03	58.57	540.01	462.60	916.16	943.31	27.2	239.95	
15	192.25	132	373.94	505.8	6	115.7	121.82	93	53.4	146.00	3.33	9.75	58.55	60.79	477.06	422.83	807.33	801.12	-6.2	198.46	
16	268.44	133	413.17	546.1	6	135.2	141.25	94	24.0	117.76	37.85	22.44	58.39	60.48	508.46	501.18	884.49	909.78	25.3	243.15	
17	315.94	151	450.94	602.3	6	143.5	149.57	95	21.3	116.61	43.33	25.70	63.30	81.92	526.46	568.66	981.41	993.68	12.3	303.67	
18	576.34	147	594.39	741.7	8	148.5	156.66	96	65.5	161.42	72.65	51.67	73.21	102.47	561.01	827.65	1255.73	1284.53	28.8	547.54	
19	751.75	194	711.90	905.5	9	155.8	164.76	95	64.0	158.85	88.28	62.61	63.07	106.13	539.57	1049.13	1445.34	1484.77	39.4	712.32	
20	781.52	192	690.20	882.4	9	162.1	171.05	96	64.1	160.02	91.37	50.79	68.27	111.48	496.95	1078.60	1430.47	1470.55	40.1	741.43	
21	524.52	190	617.77	807.3	33	162.5	195.40	96	43.9	139.44	85.96	48.66	69.27	104.81	641.34	842.55	1322.38	1355.30	32.9	491.60	
22	486.76	207	573.22	779.8	24	146.6	170.62	95	33.4	128.58	85.44	47.65	58.37	97.37	590.55	812.56	1248.61	1283.78	35.2	451.58	
23	331.16	201	465.73	666.5	24	155.6	179.62	96	34.2	129.71	82.22	35.76	53.25	77.31	626.71	651.45	1104.89	1158.61	53.7	277.44	
24	273.94	156	446.72	602.4	24	155.9	179.92	96	23.5	119.02	71.61	28.18	48.51	72.56	603.38	549.10	1002.68	1032.93	30.3	243.69	
Max	781.52	207	711.90	905.46	33	168.5	195.40	96	65.5	161.42	91.37	62.61	73.21	111.48	641.34	1078.60	1445.34	1484.77	53.7	741.43	
Min	192.25	132	373.94	505.80	0	115.7	119.08	53	4.8	70.67	3.33	9.75	42.25	54.76	410.22	422.83	807.33	801.12	-20.0	198.46	

HOURLY DATA ON MINIMUM DEMAND MET DAY

DATE: 14.03.2012

All figures in MW

HRS.	Total ISGS Injection (MW)	STATE SECTOR													ER	Total N.E.R GEN	Total Demand Met	Gross Demand met = Sum of demand met of all the states+loss	Actual Loss	Total Drawal by States
		ASEB			MeSEB			Tripura			Manipur	Mizoram	Nagaland	ArPr						
		GEN	Demand Met	Drawal	GEN	Demand Met	Drawal	GEN	drawal	Demand Met	DM	DM	DM	DM						
1	194.96	163	334.4	497.87	13	151.9	165.34	96	-10.39	85.92	23.01	24.00	44.52	68.12	466.59	468.2	731.9	757.80	25.9	169.04
2	200.72	163	334.4	497.53	0	105.0	105.00	96	-13.76	82.26	15.93	22.78	41.40	64.31	399.02	459.8	666.1	695.69	29.6	171.14
3	201.25	165	331.1	496.55	0	122.4	122.44	96	-14.76	81.17	14.59	22.98	38.41	66.63	406.78	462.6	677.4	703.90	26.5	174.72
4	202.20	166	326.5	492.08	0	120.9	120.91	96	-15.33	80.82	10.47	21.72	40.78	64.64	397.04	463.9	665.8	695.33	29.5	172.69
5	207.11	170	341.1	510.59	0	121.5	121.49	96	-14.37	81.58	16.55	24.05	43.76	66.48	417.11	472.6	695.0	720.11	25.1	181.99
6	209.27	179	369.0	547.62	0	121.5	121.49	96	-8.30	87.87	40.69	32.89	58.25	78.62	542.23	484.0	788.8	812.45	23.6	185.66
7	219.71	173	447.6	620.65	0	148.6	148.60	96	-6.12	90.06	44.23	21.86	63.02	86.94	615.84	488.9	902.4	931.68	29.3	190.39
8	221.36	206	400.1	606.54	38	163.1	200.90	96	-1.34	94.89	41.35	32.08	63.55	80.87	584.02	561.8	876.0	901.55	25.6	195.78
9	196.49	166	384.4	550.14	49	147.8	196.55	96	-4.58	91.82	45.18	24.65	54.14	78.42	554.84	507.4	826.4	847.68	21.3	175.22
10	201.11	152	383.4	535.42	49	128.0	176.70	96	0.74	96.73	48.23	25.29	44.86	67.97	517.72	497.8	794.5	814.77	20.3	180.79
11	198.58	150	368.3	517.89	49	112.4	161.07	96	-3.12	92.64	33.93	27.66	47.77	66.42	470.93	492.6	749.1	765.22	16.1	182.47
12	209.23	155	347.6	502.92	61	120.8	182.29	95	-4.70	90.50	32.62	28.45	47.96	69.95	456.19	521.2	737.9	760.57	22.6	186.58
13	221.46	154	342.2	496.03	37	112.8	149.61	94	-2.63	90.96	40.20	29.48	50.36	70.24	444.42	505.7	736.2	759.42	23.2	198.28
14	174.24	166	341.6	507.38	37	121.7	159.01	94	-4.22	89.43	35.78	15.34	46.09	67.96	463.64	471.0	717.9	731.48	13.6	160.68
15	205.50	165	322.7	487.27	28	120.1	148.46	93	0.67	93.93	30.29	24.57	54.11	63.93	433.72	491.7	709.6	732.41	22.8	182.71
16	243.06	139	350.3	489.05	24	120.2	144.29	93	2.75	95.88	35.09	31.74	54.31	67.58	442.39	499.0	755.1	778.53	23.4	219.68
17	460.01	174	400.8	575.13	49	134.7	183.45	93	10.12	103.36	41.94	39.43	64.14	86.45	363.76	776.3	870.8	916.90	46.1	413.92
18	604.74	206	566.3	772.30	49	143.2	191.87	94	58.44	152.40	75.43	54.40	76.83	91.48	491.63	953.4	1160.0	1190.22	30.2	574.55
19	754.24	212	594.2	806.57	25	164.6	189.30	96	58.62	154.15	91.18	54.10	76.57	106.44	443.41	1086.9	1241.2	1293.07	51.9	702.37
20	621.60	209	647.5	856.32	25	154.5	179.22	96	55.29	151.26	95.52	54.78	71.67	102.28	555.43	951.1	1277.5	1272.89	-4.6	626.22
21	550.02	191	549.6	740.43	18	158.7	176.80	97	52.05	148.94	87.51	50.00	63.17	103.85	538.84	855.8	1161.8	1185.64	23.8	526.19
22	433.66	214	520.0	733.78	18	136.6	154.63	97	37.46	134.76	71.71	37.79	59.44	91.41	529.85	762.8	1051.6	1060.70	9.1	424.60
23	356.16	205	393.7	598.40	42	159.5	201.39	97	21.63	118.79	71.48	32.67	57.77	79.87	485.34	700.0	913.7	938.61	24.9	331.29
24	296.49	200	366.4	566.39	33	141.7	174.79	97	3.46	100.00	61.76	28.90	49.47	71.60	455.17	626.1	819.8	848.15	28.3	268.18
Max	754.24	214	647.5	856.32	61	164.6	201.39	97	58.62	154.15	95.52	54.78	76.83	106.44	615.84	1086.9	1277.5	1293.07	51.9	702.37
Min	174.24	139	322.7	487.27	0	105.0	105.00	93	-15.33	80.82	10.47	15.34	38.41	63.93	363.76	459.8	665.8	695.33	-4.6	160.68

ANNEXURES
&
EXHIBITS

RESERVOIR PARTICULARS OF THE MONTH :

Mar-12

Name of the Reservoirs	FRL	MDDL	Beginning of the month		End of the month	
			Level	Energy content(MU)	Level	Energy content(MU)
KHANDONG	719.3 M	704 M	712.70	9.99	710.95	8.03
KOPILI	609.5 M	592.83 M	597.51	18.70	596.59	13.80
LOKTAK	768.5 M	766.2 M	767.78	81.00	766.79	19.00
BARAPANI	3220 Ft	3150 Ft	3179.10	13.09	3174.56	10.78
GUMTI	93.55 M	83.6 M	84.00	1.52	83.60	1.11
DOYANG	333 M	306 M	311.72	7.00	308.79	2.65

FREQUENCY ANALYSIS FOR THE MONTH OF : Mar-12

Frequency	(Freq.in Hz)	(Time: H:M)	(Date:D.M.Y)
1. Maximum frequency	50.68	17:04	08-Mar-12
2. Minimum frequency	49.02	19:09	23-Mar-12
3. Monthly average	49.90		

Frequency in Hz as %age of time for the blocks :

f < 49.5	49.5 < f < 50.2	f > 50.2
2.96%	91.38%	5.66%

Daily Frequency Variation Index :

DATE	FVI	DATE	FVI
1-Mar-12	0.880	17-Mar-12	0.730
2-Mar-12	1.000	18-Mar-12	0.730
3-Mar-12	0.700	19-Mar-12	0.500
4-Mar-12	0.390	20-Mar-12	0.330
5-Mar-12	0.370	21-Mar-12	0.340
6-Mar-12	0.450	22-Mar-12	0.450
7-Mar-12	0.310	23-Mar-12	0.660
8-Mar-12	0.190	24-Mar-12	0.660
9-Mar-12	0.200	25-Mar-12	0.370
10-Mar-12	0.600	26-Mar-12	0.490
11-Mar-12	0.430	27-Mar-12	0.490
12-Mar-12	0.390	28-Mar-12	0.550
13-Mar-12	0.430	29-Mar-12	0.590
14-Mar-12	0.560	30-Mar-12	0.500
15-Mar-12	0.590		
16-Mar-12	0.390	Average FVI	0.505

Annexure-III

Details of Scheduled Bilateral Exchanges within the Region in

Mar-12

Sl.No.	From	To	Energy (At Seller Injn. Point) (MWH)		Energy (At State Periphery) (MWH)
1	Tripura (Baramura-IV)	Manipur	3534.000000		3411.292908
2	Tripura (Baramura-IV)	Mizoram	0.000000		0.000000
3	Tripura (Baramura-V)	Manipur	3421.250000		3303.039159
4	Tripura (Baramura-V)	Mizoram	342.000000		331.480166
5	TSECL	MeECL (NVVN)	3232.080000		3119.700000
6	ASEB	POWERGRID^	200.516500	^ The actual energy consumed by POWERGRID	

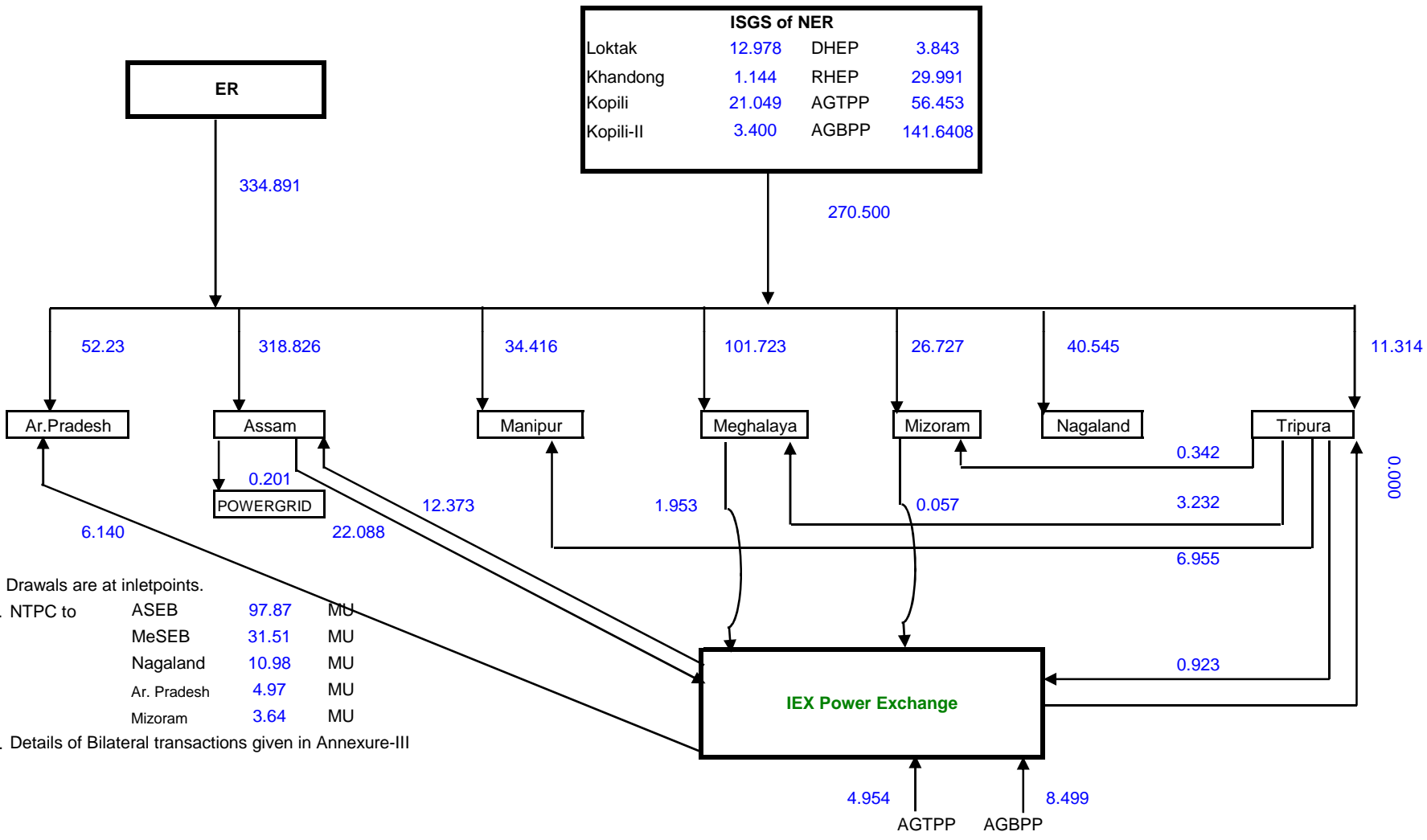
Scheduled Bilateral Exchange with SEBs / Organisations in other Regions

Sl.No.	From	To	Energy (At Seller Periphery) (MWH)	Energy (At NER-ER Periphery) (MWH)	Energy (At Buyer Periphery) (MWH)
1	BALCO	APDCL (PTC)		43451.750000	42690.152500
2	JPL	APDCL (PTC)		43451.750000	42690.152500
3	WBSEDCL	MeECL (NVVN)		7920.000000	7782.710000
4	TSECL	WBSEDCL (NVVN)	4490.530000	4411.000000	
5	Farakka*	Ar. Pradesh	2302.181725	2252.050000	2212.695538
6	Kahalgaon 1*	Ar. Pradesh	1154.854325	1157.275000	1137.042138
7	Talcher*	Ar. Pradesh	1509.376125	1482.475000	1456.502000
8	Farakka*	Assam	23449.803200	23055.500000	22652.780075
9	Kahalgaon 1*	Assam	9878.330575	9709.475000	9539.773588
10	Kahalgaon 2*	Assam	51261.215500	50392.650000	49511.987500
11	Talcher*	Assam	13285.648375	13096.475000	12867.036700
12	Farakka*	MeECL	7160.783825	7043.575000	6920.530788
13	Kahalgaon 1*	MeECL	3562.117950	3510.775000	3449.412038
14	Kahalgaon 2*	MeECL	16209.080000	15945.950000	15667.304600
15	Talcher*	MeECL	4574.101625	4518.975000	4439.805413
16	Farakka*	Nagaland	5170.793950	5081.600000	4992.835088
17	Kahalgaon 1*	Nagaland	2552.386175	2517.675000	2473.677488
18	Talcher*	Nagaland	3258.478000	3216.600000	3160.246200
19	Farakka*	Mizoram	1699.650325	1677.475000	1648.168163
20	Kahalgaon 1*	Mizoram	853.028000	837.750000	823.101025
21	Talcher*	Mizoram	1086.240375	1082.950000	1063.975513

Bilateral exchange through IEX Power Exchange (-ve means injection, +ve means drawal)

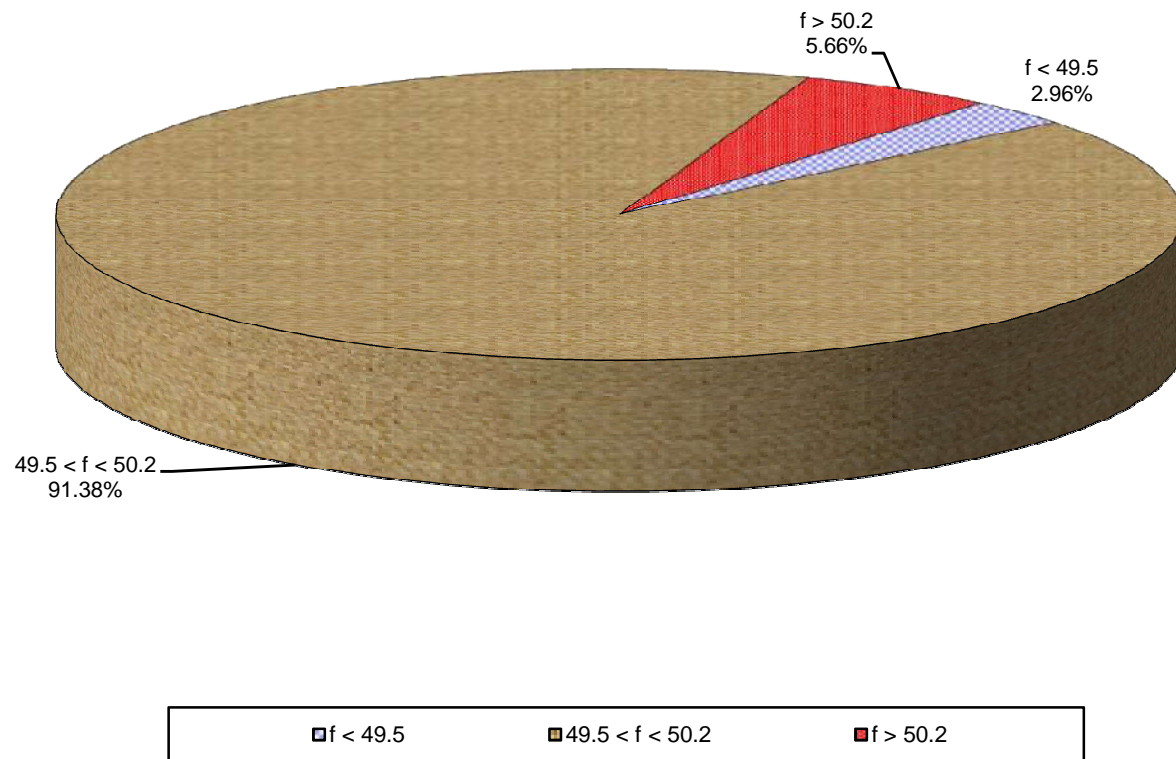
22	Ar. Pradesh			6247.100000	6140.180000
23	Assam		-22087.620000	-21700.000000	
24	Assam			12593.200000	12372.970000
25	MeECL		-1952.770000	-1919.200000	
26	MeECL			2939.700000	2889.100000
27	Mizoram		-57.260000	-56.000000	
28	Tripura		-923.210000	-905.000000	
29	NEEPCO (AGBPP)		-8499.350000	-8350.880000	
30	NEEPCO (AGTPP)		-4953.68	-4865.290000	

ENERGY EXCHANGE(in MU) IN NER DURING March, 2012

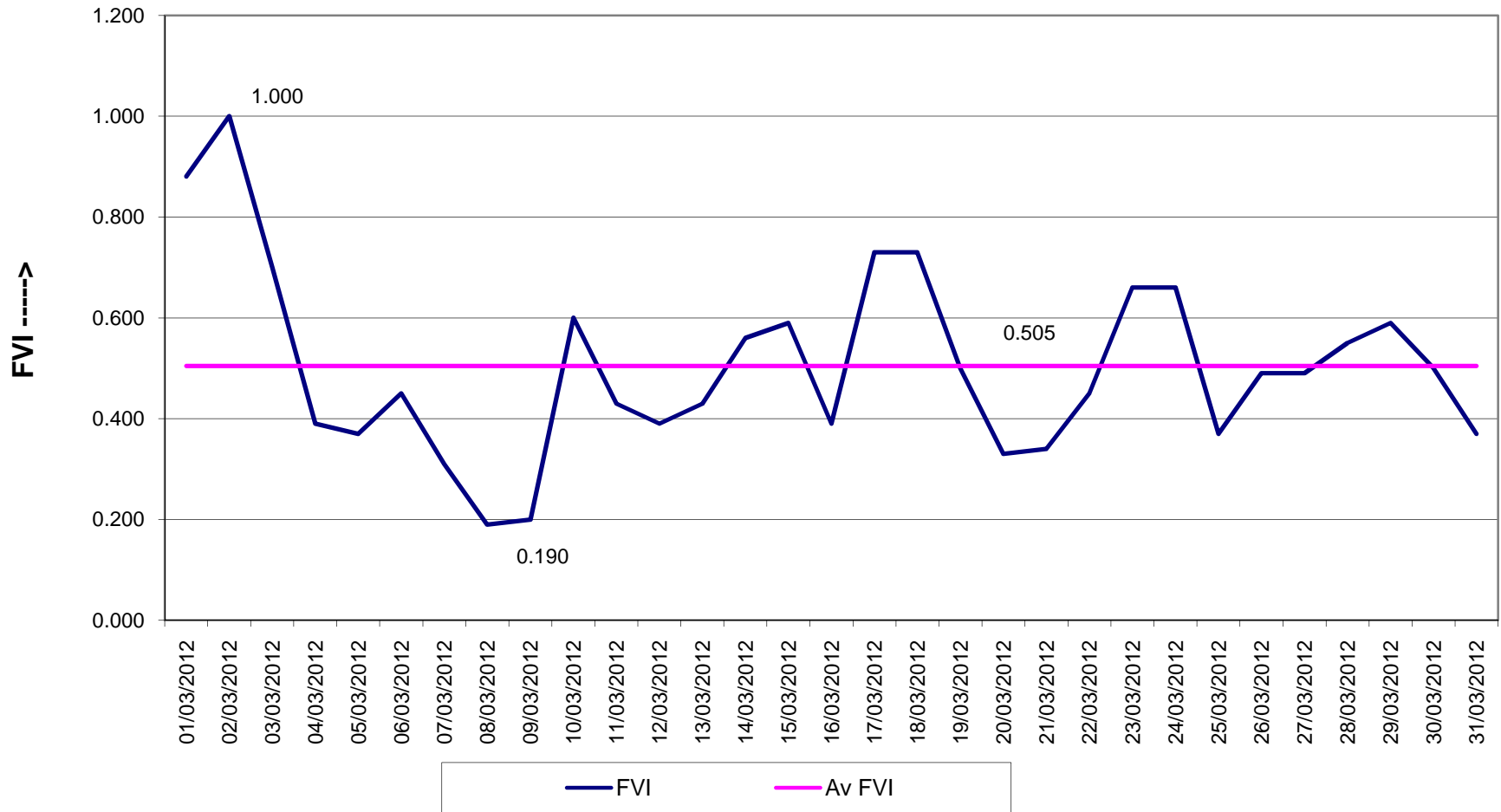


- N.B - 1. Drawals are at inletpoints.
 2. NTPC to
- | | | |
|-------------|-------|----|
| ASEB | 97.87 | MU |
| MeSEB | 31.51 | MU |
| Nagaland | 10.98 | MU |
| Ar. Pradesh | 4.97 | MU |
| Mizoram | 3.64 | MU |
3. Details of Bilateral transactions given in Annexure-III

Frequency Duration for **March, 2012**

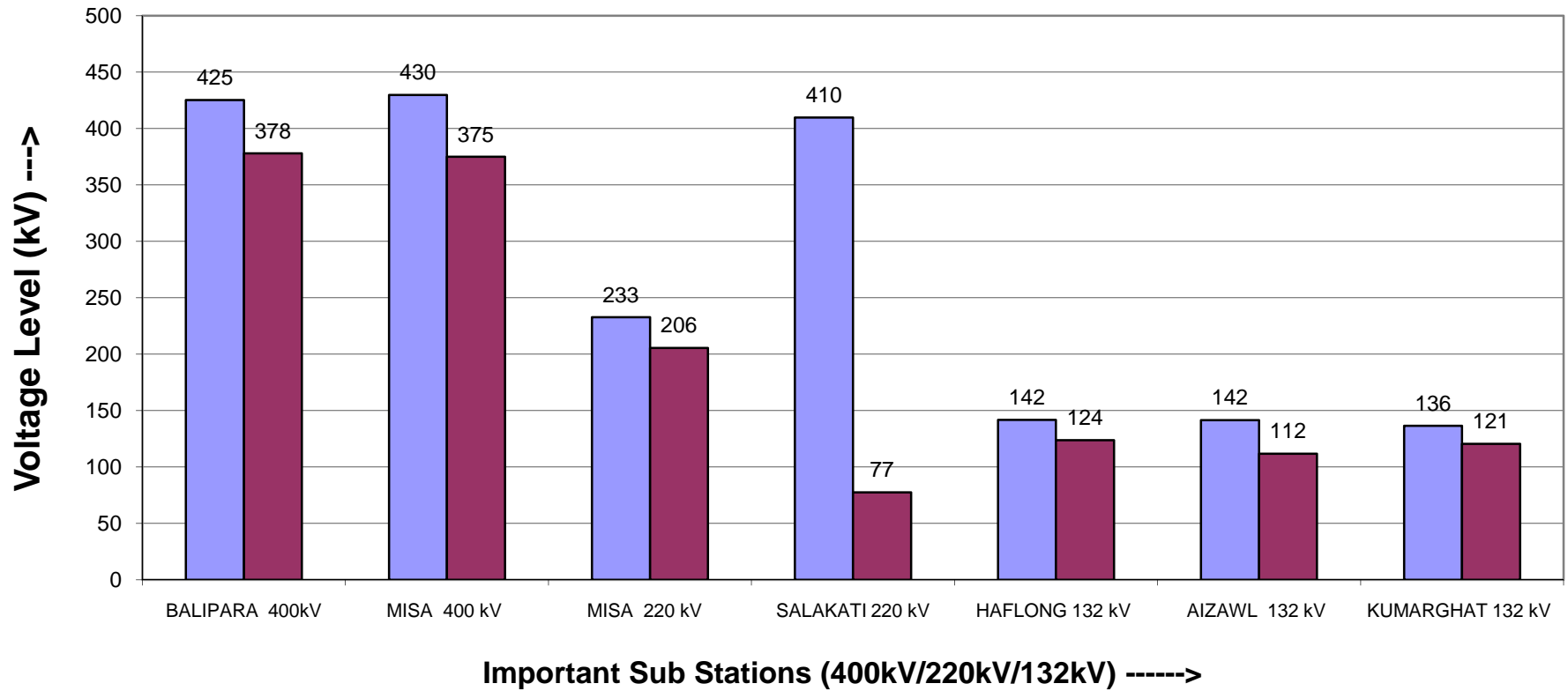


FVI Characteristics for March, 2012

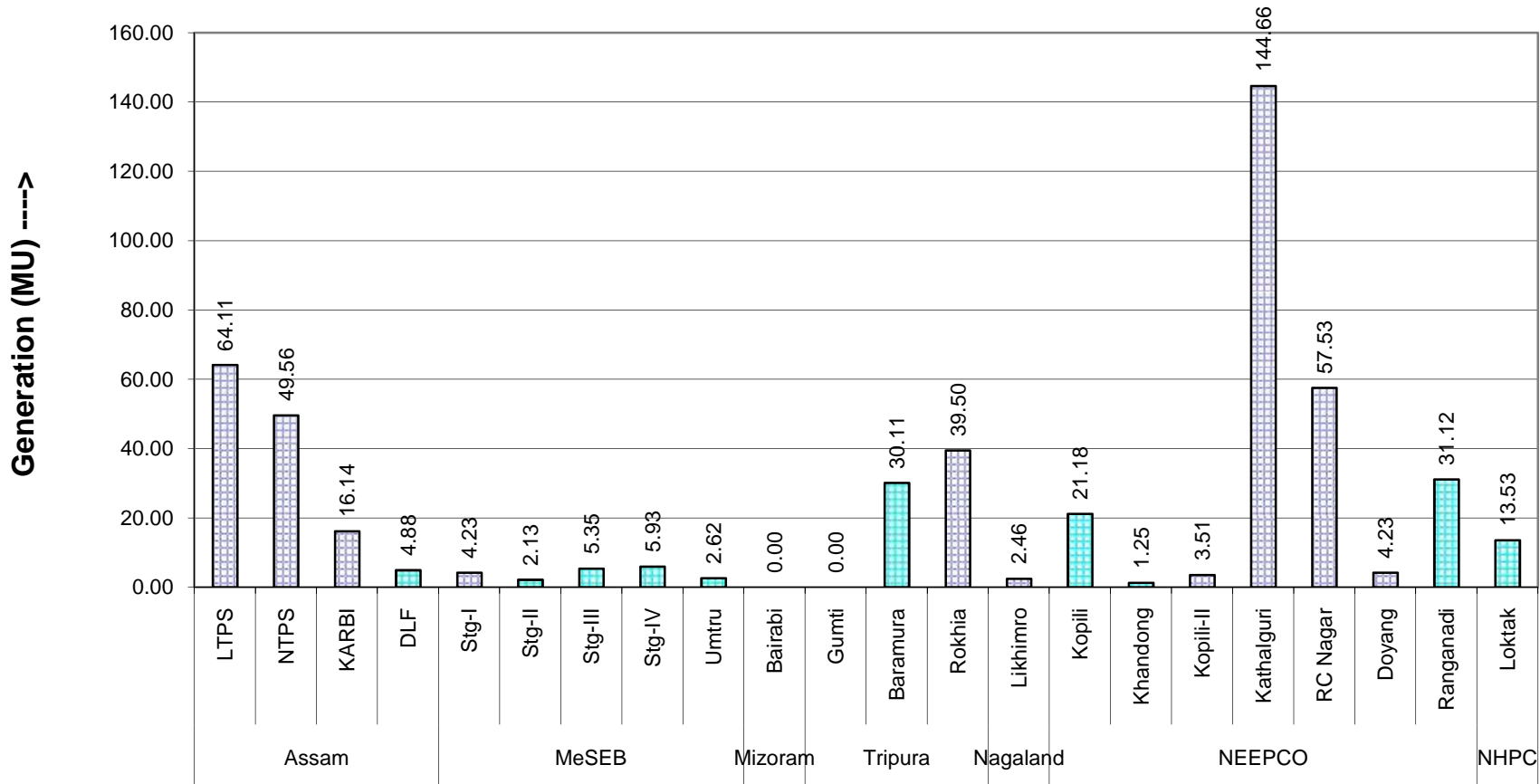


Maximum & Minimum Voltage Levels of Important Substations in NER during

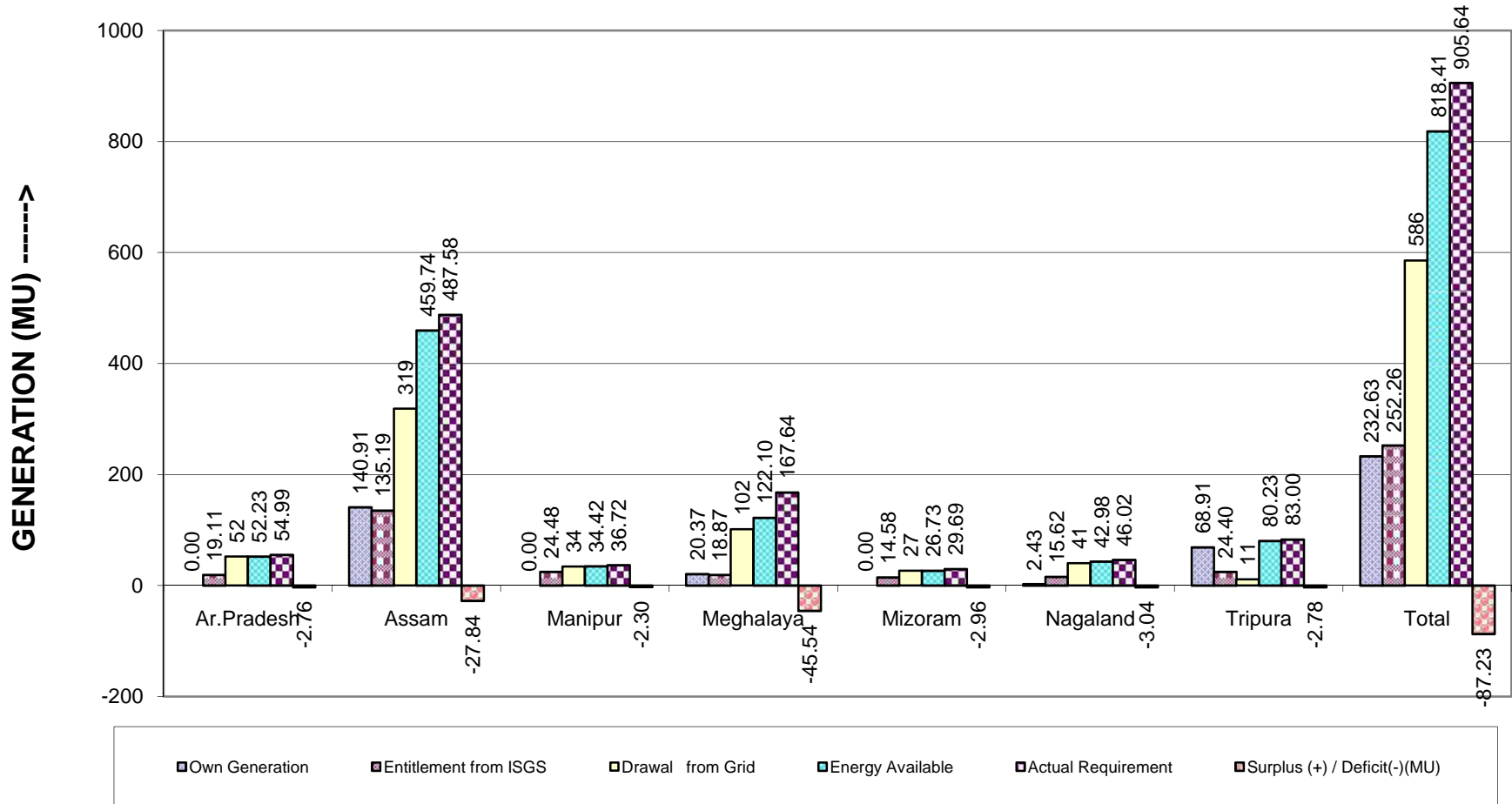
March, 2012



State and Central Sector Generation (MU) in NER in March, 2012



NER States Energy Scenario in March, 2012



Reservoir Statistics of NER in March, 2012

