



भारत सरकार Government of India

शक्ति विभाग Ministry of Power

भारतीय बिजली प्राधिकरण

Central Electricity Authority

उत्तर-पूर्व क्षेत्रीय बिजली प्राधिकरण

**North Eastern Regional Power Committee**

शिल्लॉंग Shillong

**Progress Report**

*For the month of*

**June, 2012**

## CONTENTS

Sl. No.	Topics	Page No.
1	Brief Highlights of North Eastern Regional Power System	1
2	Salient Features	2
<b><u>DETAILS OF THE REPORT</u></b>		
3	Monthly Power Supply Position: (i) Energy generation in the Region (ii) Requirement Vs Availability in the Region (iii) Estimation of Peak Demand (MW) (iv) Estimation of Energy Requirement (MU)	3 3 4 4
4	Station wise Energy Generation (MU) & Peak Generation (MW): (i) State Sector (ii) Central Sector	5, 6 7
5	Plant Load Factor (PLF)	8
6	Voltage Profile of Important Sub-Stations	8
7	(i) Inter Regional Energy Exchange (ii) Major Grid disturbances (iii) Meetings held by NERPC	9 9 9
8	Status of progress of: (i) Generating Units (ii) Transmission Lines	10 11, 12
9	Commercial Status (i) UI Accounting (ii) Schedule and CS Share Allocation	13 14, 15
10	NER Grid Status on (i) Regional Peak Demand day (ii) Regional Minimum Demand day	16 17
<b><u>ANNEXURES</u></b>		
A-1	Major Reservoir Levels	I
A-2	Frequency Analysis and it's Profile	II
A-3	Scheduled Bilateral Exchanges	III
A-4	Energy Exchanges	IV
<b><u>EXHIBITS</u></b>		
B-1	Frequency Profile: (i) Duration of frequency in different ranges (ii) Frequency Variation Index	I II
B-2	Voltage Profile: (i) Voltage Profile of Important Sub-Stations	III
B-3	Energy Generation: (i) Energy Generation by Constituents during the month (ii) Energy scenario of State's during the month	IV V
B-4	Reservoir profile : (i) Reservoir statistics for the month	VI

## NORTH EASTERN REGIONAL POWER COMMITTEE

### *Brief highlights of North Eastern Regional Power System for the month of June, 2012*

- ❖ The maximum unrestricted demand during the month of June, 2012 was 1988 MW, which was 1851 MW in the month of May, 2012. The peak demand met in NER during the period under review was 1770 MW, which was 1698 MW last month.
- ❖ The energy requirement during the month of June, 2012 was 947.99 MU, which was 886.54 MU in the month of May, 2012. The energy availability in NER during the period under review was 872.76 MU, which was 788.87 MU last month.
- ❖ The maximum, minimum & average system frequency were 50.74, 48.83 & 49.68 Hz respectively. The maximum, minimum & average FVI were 3.93, 0.44 & 1.518 respectively. The average FVI was more than its previous month's figure. (refer Annex-II).
- ❖ Maximum export of power from NER to ER was 542 MW (on 01/06/12 at 03:45 hrs) and that from ER to NER was 447 MW (26/06/12 at 05:30 hrs). Total net energy import during the month was 106.46 MU (from ER).

**SALIENT FEATURES OF  
NORTH EASTERN REGIONAL GRID FOR JUNE, 2012**

1	New unit/ transmission lines/Transformers commissioned during this month	Nil	
2	Number of total grid disturbance during this month	Nil	
		<b>Jun-12</b>	<b>Jun-11</b>
3	<b>Installed Capacity</b> of the Region ( in MW )(grid)	2188.82	2054.12
4	<b>Energy Generation in MU (Gross)::</b>		
	Thermal	333.385	204.600
	Hydel	428.392	390.649
	Diesel / Oil	0.000	0.000
	Total	761.776	595.249
5	<b>Demand in MW ::</b>		
	Registered Peak demand	1988.00	1758.00
	Peak demand met	1770.00	1564.00
	Shortage ( % age )	-10.97	-11.04
6	<b>Regional Energy(Gross) in MU ::</b>		
	Energy requirement	947.99	941.10
	Energy availability	872.76	850.23
	Surplus (+) / Deficit (-) ( % age )	-7.94	-9.66
7	<b>Inter Regional Energy Exchange in MU ::</b>		
	NER ----> ER	18.313	5.745
	ER ----> NER	124.772	118.747
	Net Import	106.459	113.00
8	<b>Frequency profile ::</b>		
	Average frequency ( Hz )	49.68	49.89
	Average Frequency Variation Index	1.518	0.554
9	Load Factor ( in % )	60.97	67.17

**ENERGY GENERATION IN THE REGION FOR THE MONTH OF Jun-12**

*All figures in MU*

Constituents	Hydro		Coal / Oil fired		Gas Based(OpenCycle)		Gas Based(Com Cycle)		Total(gen)	Total(gen)
	Gross	Net	Gross	Net	Gross	Net	Gross	Net	Gross	Net
	A	B	C	D	E	F	G	H	I	J
<b>State Sector :</b>										
Assam	25.736	25.479	0.000	0.000	79.435	78.641	35.282	34.224	140.453	138.343
Meghalaya	55.645	55.088	0.000	0.000	0.000	0.000	0.000	0.000	55.645	55.088
Mizoram	1.802	1.784	0.000	0.000	0.000	0.000	0.000	0.000	1.802	1.784
Tripura	3.346	3.312	0.000	0.000	52.374	51.850	0.000	0.000	55.719	55.162
Nagaland	7.741	7.664	0.000	0.000	0.000	0.000	0.000	0.000	7.741	7.664
<b>Total ( State Sector )</b>									<b>261.361</b>	<b>258.041</b>
<b>Central Sector :</b>										
NEEPCO :										
Khd+Kop+Kop-II	127.454	126.179	0.000	0.000	0.000	0.000	0.000	0.000	127.454	126.179
K'guri	0	0	0.000	0.000	0	0	133.480	129.476	133.480	129.476
RCNagar	0	0	0	0	54.353	53.809	0	0	54.353	53.809
Doyang	11.959	11.839	0	0	0	0	0	0	11.959	11.839
Ranganadi	186.912	185.043	0	0	0	0	0	0	186.912	185.043
NHPC :										
Loktak	26.526	26.260	0.000	0.000	0.000	0.000	0.000	0.000	26.526	26.260
<b>Total ( Central Sector )</b>									<b>540.683</b>	<b>532.607</b>
<b>Total NER</b>	<b>447.120</b>	<b>442.649</b>	<b>0.000</b>	<b>0.000</b>	<b>186.162</b>	<b>184.300</b>	<b>168.762</b>	<b>163.699</b>	<b>802.044</b>	<b>790.648</b>

**REQUIREMENT Vs AVAILABILITY IN THE REGION**

STATES	ENERGY requirement (MU) at 50 Hz				POWER requirement (MW) at 50 Hz			
	<i>Availability &amp; L/S at prevailing freq.</i>				<i>Availability &amp; L/S at prevailing freq.</i>			
	Requirt.	Availy.	Shortfall	%Shortfall	Requirt.	Availy.**	Shortfall	%Shortfall
Ar.Pr.	47.52	44.38	3.14	6.61%	116	114	2	1.54%
Assam	560.04	510.07	49.97	8.92%	1186	1052	134	11.27%
Manipur	43.27	40.67	2.59	5.99%	116	113	3	2.52%
M'laya	131.80	121.56	10.24	7.77%	272	268	4	1.62%
Mizoram	30.81	28.35	2.47	8.01%	64	62	2	2.37%
Nagaland	47.42	44.89	2.54	5.35%	100	95	5	4.56%
Tripura	87.13	82.85	4.28	4.92%	181	179	2	1.35%
<b>REGION</b>	<b>947.99</b>	<b>872.76</b>	<b>75.23</b>	<b>7.94%</b>	<b>1988</b>	<b>1770</b>	<b>218</b>	<b>10.95%</b>

**ESTIMATION OF PEAK DEMAND (in MW)**

Constituents	Peak Demand Met	Date	Freq. (Hz)	Freq. Corr.**	L/S	Estimated Peak demand at 50 Hz
Arunachal Pradesh	113.90	13/06/2012	49.80	0.68	1	115.68
Assam	1052.00	09/06/2012	49.82	5.68	128	1185.68
Manipur	113.00	08/06/2012	49.73	0.92	2	115.92
Meghalaya	268.00	14/06/2012	49.70	2.41	2	272.41
Mizoram	62.00	08/06/2012	49.73	0.50	1	63.50
Nagaland	95.00	29/06/2012	49.46	1.54	3	99.54
Tripura	179.00	08/06/2012	49.73	1.45	1	181.45
REGION	1770.00	09/06/2012	49.82	9.56	208	1987.56

\*\* Freq.Correction = Demand met x 0.03 x ( 50 - Av. Freq.)

**ESTIMATION OF ENERGY REQUIREMENT (in MU)**

Average Frequency 49.68 Hz

Constituents	Generation	Energy drawal from grid			Over(+) / Under(-) Drawal	Energy Availability*	Freq. Corr.**	L / S	Actual Requirement
		Entitlement frm ISGS of NER	Entitlement frm ISGS of ER	Drawal					
Ar.Pr.	0.000	51.829	4.170	44.377	-11.621	44.377	0.426	2.71	47.518
Assam	138.343	249.215	71.669	371.725	50.840	510.068	4.897	45.07	560.036
Manipur	0.000	46.612	0.000	40.674	-5.938	40.674	0.390	2.20	43.267
M'laya	55.088	65.111	23.097	66.472	-21.736	121.560	1.167	9.07	131.800
Mizoram	1.784	27.497	3.019	26.561	-3.955	28.345	0.272	2.20	30.814
Nagaland	7.664	30.619	9.135	37.222	-2.531	44.886	0.431	2.10	47.421
Tripura	55.162	41.521	0.000	27.686	-13.835	82.848	0.795	3.49	87.132
REGION	258.041	512.403	111.090	614.717	-8.776	872.758	8.378	66.85	947.989

\*Energy availability means energy consumed by constituents

\*\* Freq.Correction = Demand met x 0.03 x ( 50 - Av.Freq.)

**ENERGY GENERATED (MU) AND PEAK GENERATION (MW) FROM GENERATING STATIONS/UNITS:**

Sl. No.	Power Stations / Units	Installed Capacity(MW)	Peak Generation(MW)	Energy Generation (MU)	
				Jun-12	Jun-11
<b>STATE SECTOR : HYDRO</b>					
<b>ASSAM :: HYDRO</b>					
1	KARBI HEP U - 1	50.00	50.70	18.139	34.250
2	KARBI HEP U - 2	50.00	4.60	7.597	31.430
TOTAL		100.00		25.736	65.680
<b>MEGHALAYA :: HYDRO</b>					
1	STAGE - 1	36.00	27.20	7.138	10.360
2	STAGE - 2	18.00	19.00	3.767	0.000
3	STAGE - 3	60.00	58.77	11.012	12.630
4	STAGE - 4	60.00	60.26	13.276	18.290
5	UMTRU	11.20	12.00	3.525	3.870
TOTAL		185.20		38.719	45.150
<b>NAGALAND :: HYDRO</b>					
6	LIKIMRO - 1				
7	LIKIMRO - 2	24.00	24.00	7.741	6.500
8	LIKIMRO - 3				
TOTAL		24.00		7.741	6.500
<b>TRIPURA :: HYDRO</b>					
9	GUMTI - 1	5.00	Gumti Stn. Peak = 7 MW	0.000	0.000
10	GUMTI - 2	5.00		1.380	0.634
11	GUMTI - 3	5.00		1.965	2.135
TOTAL		15.00		3.346	2.769
<b>TOTAL STATE (HYDRO) :</b>		324.20		75.541	120.099

**ENERGY GENERATED (MU) AND PEAK GENERATION (MW) FROM GENERATING STATIONS/UNITS:**

Sl. No.	Power Stations / Units	Installed Capacity(MW)	Peak Generation(MW)	Energy Generation (MU)	
				Jun-12	Jun-11
<b>STATE SECTOR : THERMAL/GAS</b>					
<b>MIZORAM ::Thermal</b>					
1	Bairabi	22.92	0.00	0.000	0.000
<b>TRIPURA :: THERMAL</b>					
1	BARAMURA - 1	5.00	Baramura Stn. Peak = 42 MW	0.000	0.000
2	BARAMURA - 2	5.00		0.000	0.000
3	BARAMURA - 3	6.50		0.000	0.000
4	BARAMURA - 4	21.00		14.610	14.840
5	BARAMURA - 5	21.00		14.610	14.980
6	ROKHIA - 1	8.00	Rokhia Stn. Peak = 53.5MW	0.000	0.000
7	ROKHIA - 2	8.00		0.000	0.000
8	ROKHIA - 3	8.00		0.000	0.000
9	ROKHIA - 4	8.00		3.743	4.480
10	ROKHIA - 5	8.00		0.000	0.000
11	ROKHIA - 6	8.00		4.863	0.000
12	ROKHIA - 7	21.00		0.000	14.510
13	ROKHIA - 8	21.00		14.548	15.160
	TOTAL	148.50		52.374	63.970
<b>ASSAM :: THERMAL</b>					
1	LTPS - 1	15.00	0	0.000	7.120
2	LTPS - 2	15.00	13.9	6.600	6.940
3	LTPS - 3	15.00	0.0	0.000	9.240
4	LTPS - 4	15.00	14.8	6.806	6.820
5	LTPS - 5	20.00	20.9	12.975	6.330
6	LTPS - 6	20.00	76.6	15.031	10.420
7	LTPS - 7	20.00	20.2	11.957	8.230
8	NTPS - 1	20.00	20.0	8.612	12.580
9	NTPS - 2	21.00	20.5	11.455	11.510
10	NTPS - 3	21.00	15.0	7.726	7.930
11	NTPS - 4	11.00	14.4	0.542	6.840
12	NTPS - 5	22.00	0.0	0.000	0.000
13	NTPS - 6	22.00	13.5	6.947	5.720
14	DLF	24.50	6.8	4.527	4.960
	TOTAL	261.50		93.178	104.640
TOTAL STATE THERMAL/GAS :		432.92		145.552	168.610
TOTAL SC GEN(HY+TH/GAS)		757.12		221.093	288.709

**ENERGY GENERATED (MU) AND PEAK GENERATION (MW) FROM GENERATING STATIONS/UNITS:**

Sl. No.	Power Stations / Units	Installed Capacity(MW)	Peak Generation(MW)	Energy Generation (MU)	
				Jun-12	Jun-11
<b>CENTRAL SECTOR : HYDRO</b>					
1	KHANDONG - 1	25.00	29.38	16.282	15.590
2	KHANDONG - 2	25.00	24.67	5.100	16.040
3	KOPI LI Stg - II	25.00	27.00	16.651	15.440
4	KOPI LI - 1	50.00	50.18	25.343	27.210
5	KOPI LI - 2	50.00	55.76	24.970	10.660
6	KOPI LI - 3	50.00	46.46	10.760	33.520
7	KOPI LI - 4	50.00	51.18	28.348	17.160
8	DOYANG -1	25.00	17.86	4.176	7.910
9	DOYANG -2	25.00	16.96	3.670	9.690
10	DOYANG -3	25.00	17.93	4.113	7.570
11	LOKTAK - 1	35.00	38.83	6.101	0.510
12	LOKTAK - 2	35.00	37.76	5.532	3.700
13	LOKTAK - 3	35.00	38.37	14.893	4.400
14	RANGANADI - 1	135.00	140.00	64.994	32.850
15	RANGANADI - 2	135.00	136.03	61.450	31.330
16	RANGANADI - 3	135.00	140.72	60.468	36.970
<b>TOTAL HYDRO :</b>		<b>860.00</b>		<b>352.850</b>	<b>270.550</b>
<b>CENTRAL SECTOR : THERMAL/GAS</b>					
1	KATHALGURI - 1	33.50	33.19	6.881	17.950
2	KATHALGURI - 2	33.50	32.42	13.652	16.250
3	KATHALGURI - 3	33.50	34.48	21.417	20.530
4	KATHALGURI - 4	33.50	33.54	21.670	18.420
5	KATHALGURI - 5	33.50	34.89	19.939	18.780
6	KATHALGURI - 6	33.50	35.54	19.651	20.180
7	KATHALGURI - 7	30.00	0.00	0.000	10.800
8	KATHALGURI - 8	30.00	28.75	15.390	13.650
9	KATHALGURI - 9	30.00	26.93	14.881	15.100
10	R.C.NAGAR - 1	21.00	21.86	13.676	14.000
11	R.C.NAGAR - 2	21.00	19.77	12.780	13.870
12	R.C.NAGAR - 3	21.00	20.83	13.877	11.500
13	R.C.NAGAR - 4	21.00	21.02	14.020	13.570
<b>TOTAL THERMAL/GAS :</b>		<b>375.00</b>		<b>187.833</b>	<b>204.600</b>
<b>TOTAL CS ( HY + TH/GAS ) :</b>		<b>1235.000</b>		<b>540.683</b>	<b>475.150</b>
<b>TOTAL NER GEN(HY+TH/GAS) :</b>		<b>1992.120</b>		<b>761.776</b>	<b>763.859</b>

**Plant Load Factor (PLF) and Voltage Profile :**

Jun-12

**PLANT LOAD FACTOR OF THE THERMAL/ GAS STATIONS IN NER**

Sl. No.	Power Station	State/ Constituent	Installed Capacity (MW)	Generation (in MU)	Stationwise PLF (%)
1	LTPS*	AEGCL	120.00	53.369	61.77
2	NTPS*	AEGCL	117.00	35.282	41.88
3	Baramura	Tripura	58.50	29.220	69.37
4	Rokhia	Tripura	90.00	23.154	35.73
5	AGBPP	NEEPCO	291.00	133.480	63.71
6	AGTPP	NEEPCO	84.00	54.353	89.87

\*LTPS-- Lakwa Thermal Power Station, NTPS-- Namrup Thermal Power Station

**VOLTAGE PROFILE :****A. MAXIMUM AND MINIMUM VOLTAGE (kV ) OF IMPORTANT SUB - STATIONS :**

Sl. No.	NAME OF S/S	MAXIMUM ( kV )	MINIMUM ( kV )
1	BALIPARA 400 kV	424	388
2	MISA 400 kV	430	383
3	MISA 220 kV	232	206
4	SALAKATI 220 kV	237	215
5	HAFLONG 132 kV	142	125
6	AIZAWL 132kV	143	110
7	KUMARGHAT 132kV	143	120

**Voltage Range in kV as percentage of time for the block**

SUB-STATION	kV < 360	360<kV<380	380<kV<420	kV>420
MISA	0.37	0.00	98.74	0.89
BALIPARA	0.00	5.53	94.38	0.09

1 **INTER - REGIONAL EXCHANGE :**

All Fig in MU

NER to ER	18.313
ER to NER	124.772
NET IMPORT	106.459

2 **Major Grid Disturbances during this month**

Nil

3 **MEETING HELD BY NERPC DURING THIS MONTH**

1. 74th OCC Meeting was held on 08.06.12 at Guwahati.

<b>PROGRESS OF GENERATION PROJECTS IN NER</b>				
Name of the Generation Scheme	No. of Units	Capacity (MW)	Commissioning Schedule	REMARKS
<b>[A] NEEPCO</b>				
1. Monarchak TGBPP		104	2013	Activities in progress
2. Tuirial HEP Mizoram	2	2 X 30	2015	Being reviewed by PIB
3. Kameng HEP A. Pradesh	4	4X150	2017	Activities in progress
4. Tuival H.E. Proj. Mizoram	3	3X70	2015	Status not available
5. Tipaimukh HEP		1500	2015	Activities in progress
6. Mawphu HEP	2	90	2015	UNDER CCEA
7. Pare HEP, Ar. Pradesh		110	2015	UNDER CCEA
<b>[B] NHPC</b>				
a). Loktak Downstream HEP	2	66	2014	Activities in progress
b) Subansiri Lower HEP		2000	2016-17	Activities in progress
c) Siang Middle HEP		2000	2016	Activities in progress
d) Subansiri Upper HEP		2000	DPR Under prep	
e) Subansiri Middle HEP		1000	DPR Under prep	
f) Dibang Multipurpose Project		3000	Under TEC	
<b>[C] NTPC</b>				
a). Bongaigaon TPS	3	3X250	2013-14	Activities in progress
<b>[D] JV PROJECT</b>				
a). Palatana CCPP	2	2X323.3	2012	Activities in progress
<b>[E] ASSAM</b>				
(a) Lakwa WHRP		37.2	2012	Activities in progress
(b) Namrup CCPP	2	2X40	2014	
<b>[F] MIZORAM</b>				
(a) Tuivai Hydrel Project	2	51	2015	Activities in progress
(b) Bairabi Dam Project	2	2 X 40	2015	Activities in progress
<b>(G) MeECL</b>				
(a) Myntdu - Leishka HEP	2+1	3x42	2012-13	Activities in progress
(b) New Umtru HEP	2	2X20	2014-15	Activities in progress

<b>PROGRESS OF TRANSMISSION LINES IN NE REGION</b>									
	Name of the line	Length	Comm'n'g Sch		Total no.	Stubs com -	Tower	Stringing	Remarks
		(ckt kms)	Ann.pl	Ant/revd	of locs .	pleted(nos)	Erected	complt-ckm	
<b>A : Lines under ASEB:</b>									
1	LILO of 400 kV D/C Ranganadi-Balipara at Kukurmara	20	Jul-13		20				Deposit work to PGCIL
2	220 kV, D/C Bongaigaon TPS (NTPC) -Rangia	360	Dec-13		479	6			Design apprvd, prototype test
3	220 kV, S/C BTPS(AEGCL) - Agia-Sarusajai-II	198	Mar-12		601	601	0		
4	220 kV S/C (on D/C) Namrup TPS-Mariani	141	May-13	Dec-13					Contract awarded
5	LILO of 220 kV D/C Agia-Sarusajai at Kukurmara	4	Feb-12		8	4			Work in progress
6	132 kV D/C BTPS - Kokrajhar	18	Dec-12	Aug-12	75				Work order placed
7	132 kV D/C Kokrajhar-Bilashipara-Gauripur	70	Oct-13	Dec-13	121				
8	132 kV D/C Kukurmara-Azara	6	Dec-12	May-12	28				Contract awarded
9	132 kV D/C Kukurmara- Boko	25	May-13						Row Problem
<b>B : Lines under MeECL :</b>									
1	LILO of 400kV D/C Silchar - Bongaigaon at Killing (Byt	9	Dec-12		1				Evaluation of tender in progress
2	132 kV S/C New Umtru HEP-Norbong (EPIP II)	3	Mar-12						
3	132 kV D/C Killing(Bymihat)-EPIP I	17	Mar-12						Work in progress
4	132 kV D/C Mawngap - Sumer	66	Dec-11	Dec-12	102	102	102	66	
5	132 kV D/C Rongkhon - Ampati	33	Mar-12	Mar-13	103				Work in progress
6	132 kV S/C Nangalbibra - Agia	92	Mar-12		316	316	316	91	Work in progress
7	LILO of 132 kV S/C Agia-Nangalbibra at Mendipathar	5	Mar-12	Jun-12	9	9	5	0	
8	LILO of 132 kV D/C Mawlai-Cherrapunjee at Mawngap	5	Dec-11	Dec-12	15	10	5	0	
9	LILO of 132 kV D/C Mawlai-nangalbibra at Mawngap	3	Mar-12		13				Work in progress
<b>C : Lines under Mizoram :</b>									
1	LILO of 132 kV S/C Zemabak - W. Phaileng at Sinh	5	Dec-11						
<b>D : Lines under TSECL :</b>									
1	400 kV D/C Purba kanchan Bari- Surajmani Nagar	260	Mar-12						Fund not yet tied up.
2	132 kV D/C Surjyamani Nagar - 79 Tilla (Agartala)	36	Mar-12		41	18			Work in progress
3	132 kV D/C Surjyamani Nagar - Badarghat	6	Mar-12						Fund not yet tied up.
4	132 kV D/C Surjyamani Nagar - Budhjangnagar	36	Apr-12		63	25			ROW problem
5	132 kV D/C Surjyamani Nagar - Rokhia	35	Mar-12						Fund not yet tied up.
6	132 kV D/C Surjyamani Nagar - Udaipur	50	Mar-12						Fund not yet tied up.
<b>E : Lines under NETC :</b>									
1	400 kV D/C Palatana - Silchar	492	Feb-12	Jul-12	680	678	672	484	Forest clearance awaited
2	400 kV D/C Bongaigaon- Silchar	830	Jun-12	Apr-13	1150	951	866	410	Forest clearance awaited

	Name of the line	Length (ckt kms)	Comm'ing Sch		Total no. of locs.	Stubs com - pleted(nos)	Tower Erected	Stringing complt-ckm	Remarks
			Ann.pl	Ant/revd					
<b>F : POWERGRID Lines:</b>									
1	+/- 800kv HVDC Bipole Biswanath Chariyali - Agra	1971	Aug-13	Sep-14	4228	3320	2710	461	Matching with HVDC Converter
2	400kV Balipara - Biswanath Chariyali D/C	130	Aug-13	Aug-13	167	144	137	67	Matching with L. Subansiri
3	LILO of 400 kv Ranganadhi Balipara D/C at Biswanath	54	Aug-13	Aug-13	76	70	67	19	Matching with Gen. of L.Subansi
4	132 kV D/C B. Chariyali-B. Chariyali (AEGCL)	32	Aug-13	Aug-13	55	21	2		
5	400 kV Kameng-Balipara D/C	110	Feb-13	Mar-14	142	57	9	0	Matching with Gen. of Kameng
6	400kV Balipara- Bongaigaon D/C line	596	Feb-13	Feb-13	837	764	658	224	Matching with Gen. of Kameng
7	400kV Lower Subansari-Biswanath Charrali line-I	334	Feb-13	Dec-13	432	301	218	51	Matching with Gen. Project
8	400kV Lower Subansari-Biswanath Charrali Line-II	340	Feb-13	Feb-13	442	325	196	35	Matching with Gen. Project
9	132 kV Kopili- Khandong-II	12	Sep-09		43	37	24	8	Forest clearance awaited
10	400 kV D/C Bongaigaon TPS-Bongaigaon line	6	Mar-12		11	8	4	0	
11	400kV D/C Pallatana- Surajmani –nagar line	70	Dec-11	Jun-12	118	118	118	74	Compl. of Suraj-maninagar by TSECL
12	400kV D/C Silchar-Purba Kanchan Bari line	252	Mar-12	Jun-12	373	305	177	38	ROW problem
13	400kV D/C Silchar-Melriat(New) line	320	Dec-12	Mar-13	435	135	83	32	1 <sup>st</sup> Stg Forest clearance awaited
14	400kV D/C Silchar-Imphal(New) line	280	Dec-12	Jun-12	427	113	18	0	Likely to be delayed
15	220kV D/C Mariani(New)-Mokikchung(PG)	112	Dec-12	Mar-13	160	44	14	0	Efforts to be made to match U#2 of Palatana GBPP
16	132kV Silchar-Badarpur(PG) SW Interconnecting line	42	Nov-11		69	68	64	28	To match with U#1 of Palatana
17	132kV D/C Melriat(New)- Melriat (Mizo) Interconnecting line	60	Dec-12	Mar-13	85				Melriat S/s by Mizoram
18	132kV D/C Silchar-Srikona (AEGCL) line	6	Dec-11		10	7	7	2	Award Placed
19	132kV D/C Silchar-Hailakandi (AEGCL) line	50	Dec-11		65	65	65	39	Completion matching with S/S
20	132kV D/C Mokikchung(PG)- Mokikchung(Naga) line	2	Dec-12	Mar-13	4				Efforts to be made to match U#2 of Palatana GBPP
21	132 kV S/C Pasighat-Roing line (on D/C)	70	Dec-12	Mar-13	550	124	39	0	Completion matching with S/S.
22	132 kV S/C Roing-Tezu line (on D/C)	60	Dec-12	Mar-13					Engg. in progress
23	132 kV S/C Tezu-Namsai line (on D/C)	90	Dec-12		180	8			Completion matching with S/S.
24	LILO of 400kV S/C Kathalguri -Misa line at Mariani(Ne)	2	Dec-12		20				
25	LILO of 132 kV S/C Loktak-Imphal line at Imphal (Ne)	60	Dec-12		150				
26	220 kV D/C Bongaigaon TPS (NTPC-Bongaigaon)	15	Dec-12		11	10	10	3	

**UI Receivable/ Payable for the month of****Jun-12**

Organisation	Actual (MU)	Schedule (MU)	UI Energy (MU)	UI Receivable (Rs. in Lakhs)	UI Payable (Rs. in Lakhs)
Arunachal Pradesh	44.377	55.999	-11.621	489.361	44.827
ASEB	371.725	394.130	-22.405	977.559	584.484
Manipur	40.674	53.131	-12.458	467.870	11.625
MeSEB	66.472	80.040	-13.569	571.334	6.879
Mizoram	26.561	32.906	-6.345	264.134	2.722
Nagaland	37.222	38.492	-1.269	143.552	166.836
Tripura	27.686	39.902	-12.217	464.923	97.576

**Entitlement, Schedule, Drawal and UI Charges****Jun-12**

Name of beneficiaries	Entit. from scheduled energy from ISGS in NER (Ex-PP State)	Entit. from scheduled energy from ISGS in ER (Ex-PP State)	Total Entitlement (Ex-PP State) (in MU)	Schedule (Ex-PP State) (in MU)	Actual Drawal from Grid (MU)	Over Drawal (+) / Under Drawal (-) (MU)	UI Payable (-)/ Receivable (+) (Rs. In Cr)
Arunachal Pradesh	51.829	4.170	55.999	55.999	44.377	-11.621	4.445
ASEB	249.215	71.669	320.884	394.130	371.725	-22.405	3.931
Manipur	46.612	0.000	46.612	53.131	40.674	-12.458	4.562
MeSEB	65.111	23.097	88.208	80.040	66.472	-13.569	5.645
Mizoram	27.497	3.019	30.516	32.906	26.561	-6.345	2.614
Nagaland	30.619	9.135	39.753	38.492	37.222	-1.269	-0.233
Tripura	41.521	0.000	41.521	39.902	27.686	-12.217	3.673

( Source : UI A/c, NERPC )

\* In addition to total entitlement, bilateral exchanges and purchase/sell through traders/exchange are covered in Annexure-III

**Schedule for ISGS's Generation and State's Drawl for the month of**

**Jun-12**

States	Schedule From ISGS(MWH)	Bilateral Schedule from Outside NER ( MWH )	Total Schedule ( MWH )	Ex.PP. Drawal ( MWH )	Tr. Energy ( MWH )
Arunachal Pradesh	53421.37	4230.33	57651.69	46275.20	57651.69
ASEB	258141.69	72930.85	331072.54	387621.76	387621.76
Manipur	48020.67		48020.67	42413.17	48020.67
MeSEB	67596.70	23575.95	91172.65	69314.38	91172.65
Mizoram	28533.24	3081.98	31615.22	27696.64	31615.22
Nagaland	31716.65	9296.13	41012.77	38814.11	41012.77
Tripura	42596.73		42596.73	28869.74	42596.73
<b>Total</b>	<b>530027.05</b>	<b>113115.23</b>	<b>643142.27</b>	<b>641004.98</b>	<b>699691.49</b>

ISGS	Schedule ( MWH )	Injection ( MWH )
LOKTAK	24201.73	26162.33
KHANDONG	21238.55	3357.23
KOPILI-I	88575.00	23983.56
KOPILI-II	16204.40	7362.94
DHEP	11179.21	1830.19
RHEP	185856.30	65273.29
AGTPP	52761.77	55650.61
AGBPP	130010.09	143796.41
<b>Total</b>	<b>530027.05</b>	<b>327416.55</b>

Source : Provisional REA for the month: Jun-12

**Cumulative wt. Average Share Allocation (%) ( Up to this month) in CS Stations**

States	KOPILI	KOPILI-II	KHANDONG	RHEP	DHEP	AGBPP	AGTPP	Loktak HEP
	(200 MW)	(25 MW)	( 50 MW)	(405 MW)	(75 MW)	(291 MW)	( 84 MW)	( 90 MW)
Arunachal Pradesh	5.191	5.992	4.194	18.462	6.852	5.694	6.132	4.940
Assam	53.455	52.355	56.285	43.328	43.808	56.503	45.585	29.445
Manipur	7.395	6.945	6.555	8.373	7.865	8.105	8.313	30.115
Meghalaya	17.395	13.675	16.905	11.505	11.455	11.815	11.813	12.393
Mizoram	4.610	6.040	3.940	5.700	5.250	5.410	5.980	5.020
Nagaland	6.147	5.735	6.653	5.335	17.967	5.805	5.377	6.435
Tripura	5.807	9.258	5.468	7.297	6.803	6.668	16.800	11.652
Total	100.00	100.00	100.00	100.00	100.00	100.00	100.00	100.00

**Details of Fixed and Energy Charges of CS Stations for FY 2011-12**

Projects	Installed Capacity ( MW )	Design Energy (GWh)	Annual Fixed Charge ( Rs. Crore)	Reference
KOPILI HEP	200	1186.14*	81.2979 *	*As per CERC order dated 30.09.2011 in petition No 294/2009.
KOPILI -II	25	86.3*	13.3856 **	* Provisional, ** As per CERC order dated 01.01.08 in pet. No 70/2006
KHANDONG HEP	50	277.61*	44.7731 *	*As per CERC order dated 30.09.2011 in petition No 297/2009.
RHEP*	405	1509.69	291.3941	*As per CERC order dated 10.05.2011 in petition No.296/2009.
DHEP	75	227.24	58.5 *	*As per CERC order dated 03.10.07 in petition No 88/2007.
AGBPP	291	NA	238.82 *	As per CERC order dated 6.9.2011 in Pet.No295 / 2009
AGTPP	84	NA	69.8278 *	Base Rate of energy Charge as per the CERC Order
LOKTAK HEP	105	448.00	101.2114 *	*As per CERC order dated 11.03.11 in Pet.No 299/2009,^Base Engy. charge as per CERC order
				*As per CERC order dated 14.06.11 in Pet.No 108/2010

## HOURLY DATA ON PEAK DEMAND MET DAY

DATE:- 20.06.2012

All figures in MW

HRS.	Total ISGS Injection (MW)	STATE SECTOR																		ER	Total N.E.R GEN	Total Demand Met	Gross Demand met	Actual Loss	Total Drawal by States
		ASEB			MeSEB			Tripura			Manipur		Mizoram			Nagaland		Ar. Pradesh							
		GEN	Drawal	Demand Met	GEN	Drawal	Demand Met	GEN	Drawal	Demand Met	Drawal	Demand Met	GEN	Drawal	Demand Met	Drawal	Demand Met	Drawal	Demand Met						
1	486.71	229	579.32	807.8	83	88.957	172.4	78	46.205	124.2	48.0192	48.02	6.82	28.872	35.69	44.887	44.89	40.756	40.76	437.42	876.69	1273.82	1320.97	47.1	439.56
2	486.90	190	611.77	801.4	83	89.299	172.7	78	41.99	120.1	29.9232	29.92	6.87	27.1008	33.97	43.44	43.44	38.833	38.83	434.03	838.01	1240.34	1278.94	38.6	448.29
3	488.12	190	641.50	831.4	54	75.683	129.7	78	38.438	116.5	20.3856	20.39	6.93	23.9328	30.86	41.563	41.56	36.37	36.37	428.02	810.18	1206.86	1245.16	38.3	449.82
4	487.64	187	622.70	809.5	42	83.15	125.1	79	36.499	115.0	19.3296	19.33	6.93	23.2128	30.14	43.502	43.50	36.886	36.89	417.02	794.87	1179.43	1218.84	39.4	448.23
5	602.53	186	560.74	747.1	18	118.44	136.2	79	24.614	103.4	20.5104	20.51	6.81	26.8848	33.69	54.338	54.34	33.32	33.32	278.81	885.47	1128.60	1171.12	42.5	560.02
6	629.32	185	521.62	706.4	63	121.47	184.7	78	13.584	92.0	48.6384	48.64	6.70	41.1552	47.86	38.023	38.02	45.166	45.17	245.63	955.79	1162.83	1208.14	45.3	584.00
7	613.39	185	531.87	716.9	64	142.78	206.7	79	14.794	93.7	50.3616	50.36	6.76	50.184	56.95	40.248	40.25	47.667	47.67	293.35	941.22	1212.49	1241.37	28.9	584.52
8	607.40	180	526.75	707.1	87	109.1	196.5	79	21.149	99.8	45.5232	45.52	6.87	45.5328	52.40	49.281	49.28	49.035	49.04	265.26	953.91	1199.75	1226.07	26.3	581.08
9	607.11	186	562.76	748.6	71	111.08	182.4	78	22.176	100.5	58.2864	58.29	6.76	34.6608	41.42	43.531	43.53	48.213	48.21	298.74	942.56	1222.91	1248.09	25.2	581.93
10	501.35	188	586.25	774.4	79	96.406	175.0	78	21.955	99.9	57.3264	57.33	6.90	31.2912	38.19	43.795	43.79	29.053	29.05	353.97	845.98	1217.61	1206.89	-10.7	512.07
11	493.37	137	519.86	657.3	87	76.978	164.4	78	28.867	106.6	55.7808	55.78	6.88	29.8944	36.78	48.95	48.95	27.96	27.96	320.81	795.90	1097.70	1123.62	25.9	467.45
12	487.24	147	531.77	678.5	78	72.09	149.7	78	29.818	107.5	48.792	48.79	6.84	30.8736	37.71	51.916	51.92	28.061	28.06	320.98	789.23	1102.15	1117.08	14.9	472.32
13	465.12	192	487.23	679.6	70	81.477	151.1	77	35.242	112.3	46.9824	46.98	6.74	30.168	36.90	52.267	52.27	29.998	30.00	322.16	804.24	1109.21	1133.17	24.0	441.16
14	503.28	191	487.41	678.3	93	77.546	170.2	77	42.912	119.8	46.4064	46.41	6.70	24.6672	31.36	58.149	58.15	27.254	27.25	270.00	863.70	1131.46	1140.42	9.0	494.31
15	533.55	187	502.51	689.1	75	84.923	159.7	76	40.781	116.7	49.5024	49.50	6.71	27.9504	34.66	54.362	54.36	33.088	33.09	289.88	870.86	1137.14	1167.48	30.3	503.20
16	533.44	183	544.36	727.3	83	91.958	175.4	76	43.008	119.3	51.336	51.34	6.84	38.4624	45.30	54.792	54.79	36.192	36.19	356.46	876.09	1209.60	1239.42	29.8	503.63
17	821.10	182	536.95	718.9	93	86.154	179.6	77	38.189	115.2	60.0288	60.03	6.91	40.7376	47.65	57.983	57.98	62.328	62.33	101.58	1173.56	1241.74	1282.11	40.4	780.72
18	910.83	182	652.42	834.0	65	113.27	178.4	78	37.613	115.8	66.6384	66.64	5.23	53.0352	58.26	65.747	65.75	77.232	77.23	184.50	1235.76	1396.11	1425.54	29.4	881.39
19	938.51	221	770.59	991.2	99	131.92	231.2	78	88.598	166.8	78.816	78.82	0.00	58.8384	58.84	72.659	72.66	87.945	87.94	375.17	1336.59	1687.44	1711.82	24.4	914.13
20	984.96	136	849.22	984.9	102	132.91	235.0	79	78.317	157.1	83.7408	83.74	0.97	57.6288	58.60	54.182	54.18	97.186	97.19	411.43	1301.59	1670.79	1714.05	43.3	941.70
21	980.55	139	774.67	913.5	138	115.61	253.8	79	80.141	159.0	86.6592	86.66	5.83	48.2256	54.06	59.042	59.04	89.91	89.91	331.27	1336.47	1616.01	1673.63	57.6	922.92
22	926.97	147	766.40	913.8	122	101.16	223.1	79	73.258	152.3	83.448	83.45	6.62	44.9136	51.53	53.723	53.72	78.985	78.98	317.11	1275.29	1556.83	1599.08	42.2	884.72
23	815.66	146	594.65	740.5	80	124.65	204.5	79	53.261	132.3	89.184	89.18	6.61	34.5168	41.12	50.824	50.82	67.932	67.93	235.73	1120.38	1326.35	1362.75	36.4	779.26
24	656.76	146	550.98	696.9	59	125.07	184.5	79	56.246	135.5	72.6192	72.62	6.60	28.7712	35.37	48.036	48.04	49.323	49.32	329.47	941.36	1222.24	1277.46	55.2	601.54
Max	984.96	229	849.22	991.19	###	142.78	253.83	79.30	88.60	166.80	89.18	89.18	6.93	58.84	58.84	72.66	72.66	97.19	97.19	437.42	1336.59	1687.44	1714.05	57.6	941.70
Min	465.12	136	487.23	657.26	17.75	72.09	125.08	75.90	13.58	91.98	19.33	19.33	0.00	23.21	30.14	38.02	38.02	27.25	27.25	101.58	789.23	1097.70	1117.08	-10.7	439.56

## HOURLY DATA ON **MINIMUM DEMAND MET DAY**

DATE:- **05.06.2012**

All figures in MW

HRS.	Total ISGS Injection (MW)	STATE SECTOR																		ER	Total N.E.R GEN	Total Demand Met	Gross Demand met	Actual Loss	Total Drawal by States
		ASEB			MeSEB			Tripura			Manipur		Mizoram			Nagaland		Ar. Pradesh							
		GEN	Drawal	Demand Met	GEN	Drawal	Demand Met	GEN	Drawal	Demand Met	Drawal	Demand Met	GEN	Drawal	Demand Met	Drawal	Demand Met	Drawal	Demand Met						
1	523.88	204	296.76	500.9	72	47.11	118.8	75	-1.7088	73.6	35.2128	35.21	6.71	6.8832	13.59	43.699	43.70	44.538	44.54	-22.20	874.96	830.28	859.46	29.2	494.70
2	522.03	163	333.57	496.2	90	24.39	114.1	75	-7.0368	68.3	24.504	24.50	6.70	7.0416	13.74	38.27	38.27	45.04	45.04	-26.99	849.64	800.09	829.35	29.3	492.77
3	525.75	160	303.25	462.8	89	41.618	130.8	75	-10.109	65.3	17.2128	17.21	6.86	7.5744	14.43	38.27	38.27	41.588	41.59	-57.67	849.86	770.38	799.05	28.7	497.08
4	525.39	154	278.69	432.5	89	23.896	113.1	76	-12.125	63.4	17.9376	17.94	6.96	6.984	13.94	37.636	37.64	44.531	44.53	-93.06	843.88	723.00	757.78	34.8	490.61
5	638.40	151	260.15	411.0	87	30.216	117.0	76	-15.053	60.7	24.9264	24.93	6.68	8.8992	15.57	45.772	45.77	50.784	50.78	-197.30	951.92	725.88	761.29	35.4	603.00
6	636.20	135	264.56	399.3	89	30.216	119.6	76	-16.512	59.2	44.8272	44.83	6.62	19.7568	26.38	55.075	55.07	57.637	57.64	-136.85	935.97	761.95	799.78	37.8	598.38
7	659.77	133	318.07	451.1	90	49.146	139.3	76	-14.573	61.4	51.2784	51.28	6.60	38.4048	45.00	51.403	51.40	67.368	67.37	-62.01	958.94	866.87	903.53	36.7	623.11
8	659.66	125	340.88	466.2	114	36.005	149.6	76	-12.509	63.4	47.4336	47.43	6.70	44.1936	50.89	43.612	43.61	67.036	67.04	-62.98	974.49	888.18	918.21	30.0	629.63
9	660.19	110	398.51	508.0	113	32.568	146.0	76	-6.3744	69.2	46.152	46.15	6.98	35.9136	42.89	42.388	42.39	63.304	63.30	-19.00	958.69	917.95	946.67	28.7	631.47
10	636.92	115	438.62	553.5	102	58.966	160.8	75	-2.3712	72.8	56.424	56.42	6.89	32.976	39.86	33.676	33.68	63.131	63.13	81.42	928.87	980.26	1017.18	36.9	600.00
11	755.87	114	467.21	581.5	79	53.17	132.4	74	6.816	80.9	59.4192	59.42	6.86	28.6416	35.50	41.625	41.63	67.238	67.24	14.86	1023.51	998.62	1045.22	46.6	709.26
12	759.75	116	460.27	576.1	79	51.918	131.3	73	14.246	87.2	55.8192	55.82	6.77	29.0016	35.77	39.724	39.72	66.774	66.77	-13.01	1027.90	992.68	1021.66	29.0	730.77
13	521.49	134	487.98	621.8	41	62.238	102.8	73	19.238	92.1	61.8384	61.84	6.92	32.112	39.03	45.936	45.94	37.156	37.16	258.76	768.77	1000.70	1034.45	33.7	487.74
14	518.96	184	411.77	596.0	64	39.054	103.5	72	28.675	100.9	63.8544	63.85	6.75	32.1408	38.89	51.264	51.26	35.366	35.37	174.43	839.78	989.69	1020.95	31.3	487.70
15	517.97	215	420.88	636.1	81	39.277	120.2	76	32.803	109.1	44.1888	44.19	6.78	37.6992	44.48	52.644	52.64	43.662	43.66	180.35	890.43	1050.38	1077.55	27.2	490.80
16	615.73	219	430.93	649.6	80	54.094	134.4	76	34.138	110.6	42.9072	42.91	6.61	47.7648	54.37	30.648	30.65	60.486	60.49	124.20	991.20	1083.04	1122.00	39.0	576.77
17	751.33	220	453.90	674.0	42	103.36	145.6	77	37.853	114.4	54.4416	54.44	6.67	49.1616	55.83	57.232	57.23	81.628	81.63	113.68	1090.16	1183.06	1210.50	27.4	723.90
18	779.60	222	558.68	780.5	81	87.277	168.0	78	59.51	137.8	61.7424	61.74	6.59	53.1648	59.76	44.793	44.79	87.939	87.94	208.83	1160.44	1340.54	1375.86	35.3	744.28
19	879.66	216	664.88	881.3	93	110.67	203.4	79	85.584	164.4	99.3024	99.30	6.56	59.0688	65.63	67.838	67.84	94.849	94.85	346.69	1267.58	1576.67	1620.82	44.2	835.51
20	904.41	218	705.78	923.7	103	107.23	210.2	79	86.621	165.7	86.0112	86.01	6.60	53.0352	59.64	54.052	54.05	95.463	95.46	338.42	1304.39	1594.77	1649.41	54.6	849.78
21	814.53	213	712.25	924.9	85	119.14	204.3	79	69.062	148.4	90.528	90.53	6.83	53.9424	60.77	50.003	50.00	85.499	85.50	418.82	1191.59	1564.31	1617.24	52.9	761.61
22	757.60	204	648.42	852.1	89	109.45	198.9	80	64.253	144.1	96.2928	96.29	6.65	45.7776	52.43	56.865	56.86	78.88	78.88	380.05	1130.57	1479.57	1517.26	37.7	719.90
23	705.28	203	544.24	747.1	90	79.474	169.5	80	42.192	121.7	81.888	81.89	6.64	36.144	42.78	49.312	49.31	66.375	66.38	241.81	1077.71	1278.69	1326.16	47.5	657.81
24	551.08	200	463.98	664.4	90	66.709	156.6	79	31.373	110.7	73.2288	73.23	6.51	27.792	34.30	46.62	46.62	64.391	64.39	261.91	920.65	1150.17	1189.07	38.9	512.18
<b>Max</b>	904.41	222	712.25	924.85	####	119.14	210.18	79.82	86.62	165.74	99.30	99.30	6.98	59.07	65.63	67.84	67.84	95.46	95.46	418.82	1304.39	1594.77	1649.41	54.6	849.78
<b>Min</b>	517.97	110	260.15	399.26	40.58	23.90	102.82	72.20	-16.51	59.19	17.21	17.21	6.51	6.88	13.59	30.65	30.65	35.37	35.37	-197.30	768.77	723.00	757.78	27.2	487.70

*ANNEXURES*  
&  
*EXHIBITS*

RESERVOIR PARTICULARS OF THE MONTH :

Jun-12

Name of the Reservoirs	FRL	MDDL	Beginning of the month		End of the month	
			Level	Energy content(MU)	Level	Energy content(MU)
KHANDONG	719.3 M	704 M	710.15	6.07	719.30	21.93
KOPILI	609.5 M	592.83 M	599.15	25.50	603.77	53.20
LOKTAK	768.5 M	766.2 M	766.50	10.66	766.70	16.90
BARAPANI	3220 Ft	3150 Ft	3166.28	6.93	3175.08	10.94
GUMTI	93.55 M	83.6 M	83.60	1.11	87.95	8.60
DOYANG	333 M	306 M	306.60	0.00	309.70	4.05

**FREQUENCY ANALYSIS FOR THE MONTH OF : Jun-12**

Frequency	( Freq.in Hz )	( Time: H:M )	( Date:D.M.Y )
1. Maximum frequency	50.74	18:04	03-Jun-12
2. Minimum frequency	48.83	11:05	12-Jun-12
3. Monthly average	49.68		

**Frequency in Hz as %age of time for the blocks :**

f < 49.5	49.5 < f < 50.2	f > 50.2
26.15	71.71	2.14

**Daily Frequency Variation Index :**

DATE	FVI	DATE	FVI
1-Jun-12	1.540	17-Jun-12	0.440
2-Jun-12	1.080	18-Jun-12	0.490
3-Jun-12	0.530	19-Jun-12	0.710
4-Jun-12	0.530	20-Jun-12	0.540
5-Jun-12	0.990	21-Jun-12	1.340
6-Jun-12	0.490	22-Jun-12	1.890
7-Jun-12	1.610	23-Jun-12	1.200
8-Jun-12	2.500	24-Jun-12	0.620
9-Jun-12	1.960	25-Jun-12	0.640
10-Jun-12	2.120	26-Jun-12	1.040
11-Jun-12	3.930	27-Jun-12	1.040
12-Jun-12	3.930	28-Jun-12	1.780
13-Jun-12	3.490	29-Jun-12	1.970
14-Jun-12	2.130	30-Jun-12	2.830
15-Jun-12	1.220		
16-Jun-12	0.960	<b>Average FVI</b>	<b>1.518</b>

**Annexure-III**

**Details of Scheduled Bilateral Exchanges within the Region in**

**Jun-12**

Sl.No.	From	To	Energy ( At Seller Injn. Point) (MWH)		Energy ( At State Periphery) (MWH)
1	Tripura (Baramura-IV)	Manipur	-3403.250000		-3296.949917
2	Tripura (Baramura-IV)	Mizoram	-3403.250000		-3276.882477
3	Tripura (Baramura-V)	Manipur	-3326.062500		-3222.440514
4	Tripura (Baramura-V)	Mizoram	-3326.062500		-3202.827400
5	ASEB	POWERGRID^	250.826800	^ The actual energy consumed by POWERGRID	

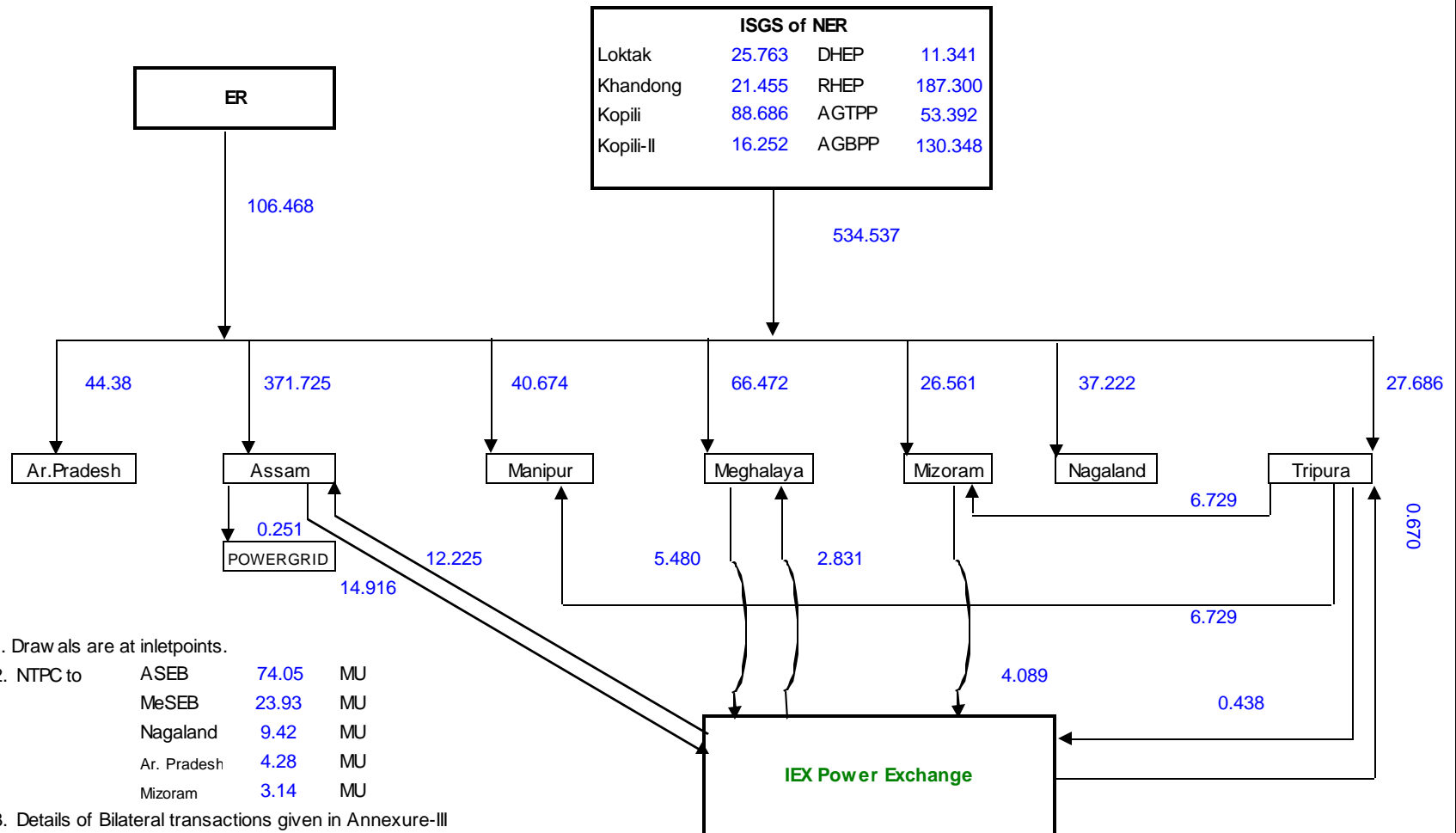
**Scheduled Bilateral Exchange with SEBs / Organisations in other Regions**

Sl.No.	From	To	Energy ( At Seller Periphery) (MWH)	Energy ( At NER-ER Periphery) (MWH)	Energy ( At Buyer Periphery) (MWH)
1	SEL	APDCL (NVVN)		76725.397500	75405.245000
2	SIKKIM	APDCL (IEXL)		130.000000	127.980000
3	GUVNL	APDCL (IEXL)		310.000000	305.080000
4	MeECL	WBSEDCL (NVVN)	-5574.660000	-5460.000000	
5	Nag	Solaris Che. (Nag)	-628.720000	-620.070000	
6	Nag	Toyota (Nag)	-633.000000	-622.800000	
7	PDDJ&K	TSECL (NVVN)		7200.000000	7107.120000
8	WBSEDCL	TSECL (NVVN)		3120.000000	3070.080000
9	JVVNL	TSECL (PTC)		1449.500000	1430.990000
10	Farakka*	Ar. Pradesh	1947.846325	1924.150000	1896.422225
11	Kahalgaon 1*	Ar. Pradesh	987.550375	979.800000	965.725563
12	Talcher*	Ar. Pradesh	1345.643500	1326.375000	1307.375913
13	Farakka*	Assam	19803.329525	19540.775000	19200.542800
14	Kahalgaon 1*	Assam	8394.211000	8252.975000	8109.647875
15	Kahalgaon 2*	Assam	34058.607000	33501.300000	32924.650175
16	Talcher*	Assam	11791.326500	11635.800000	11434.238288
17	Farakka*	MeECL	6051.266525	5968.525000	5846.699400
18	Kahalgaon 1*	MeECL	3036.765000	2992.050000	2931.128400
19	Kahalgaon 2*	MeECL	10769.520000	10596.350000	10382.172713
20	Talcher*	MeECL	4069.256750	4019.025000	3937.366175
21	Farakka*	Nagaland	4359.036100	4299.700000	4224.807550
22	Kahalgaon 1*	Nagaland	2172.067750	2139.875000	2102.71105
23	Talcher*	Nagaland	2891.3835	2856.55	2807.0705
24	Farakka*	Mizoram	1438.7344	1421.925	1392.90695
25	Kahalgaon 1*	Mizoram	730.292125	708.700000	694.275088
26	Talcher*	Mizoram	969.647500	951.350000	932.024925

Bilateral exchange through IEX Power Exchange (-ve means injection, +ve means drawal)

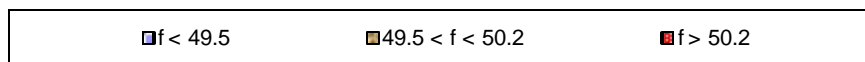
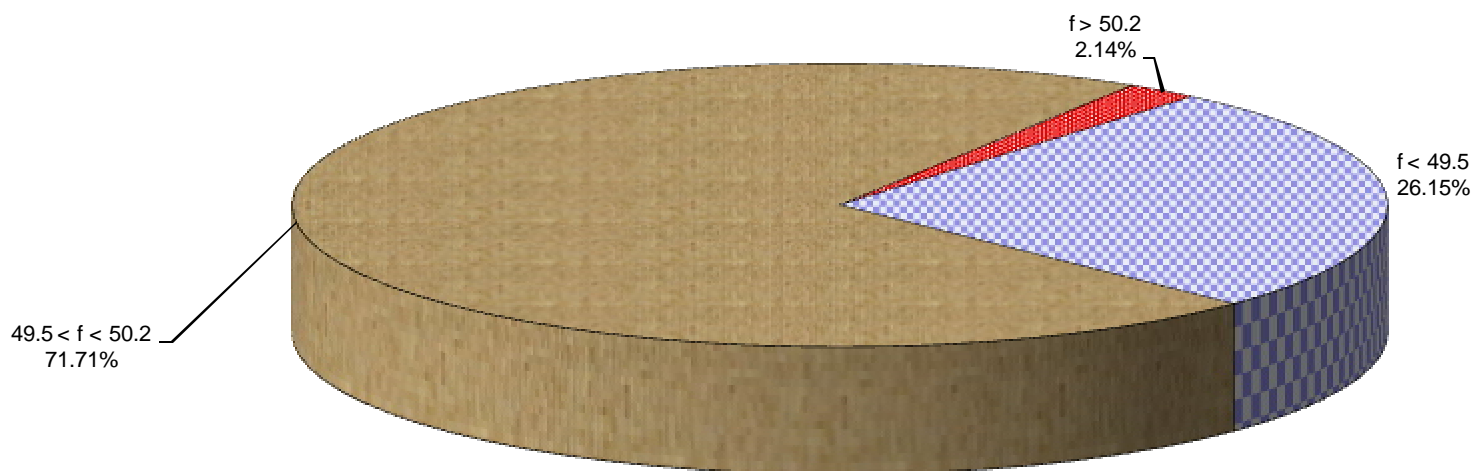
27	Assam		-14915.950000	-14650.000000	
28	Assam			12437.700000	12224.632500
29	MeECL		-5479.722500	-5373.420000	
30	MeECL			2888.925000	2830.957500
31	Mizoram		-4089.427500	-4025.305000	
32	Tripura		-438.300000	-430.000000	
33	Tripura			679.000000	670.470000

ENERGY EXCHANGE( in MU ) IN NER DURINC June, 2012

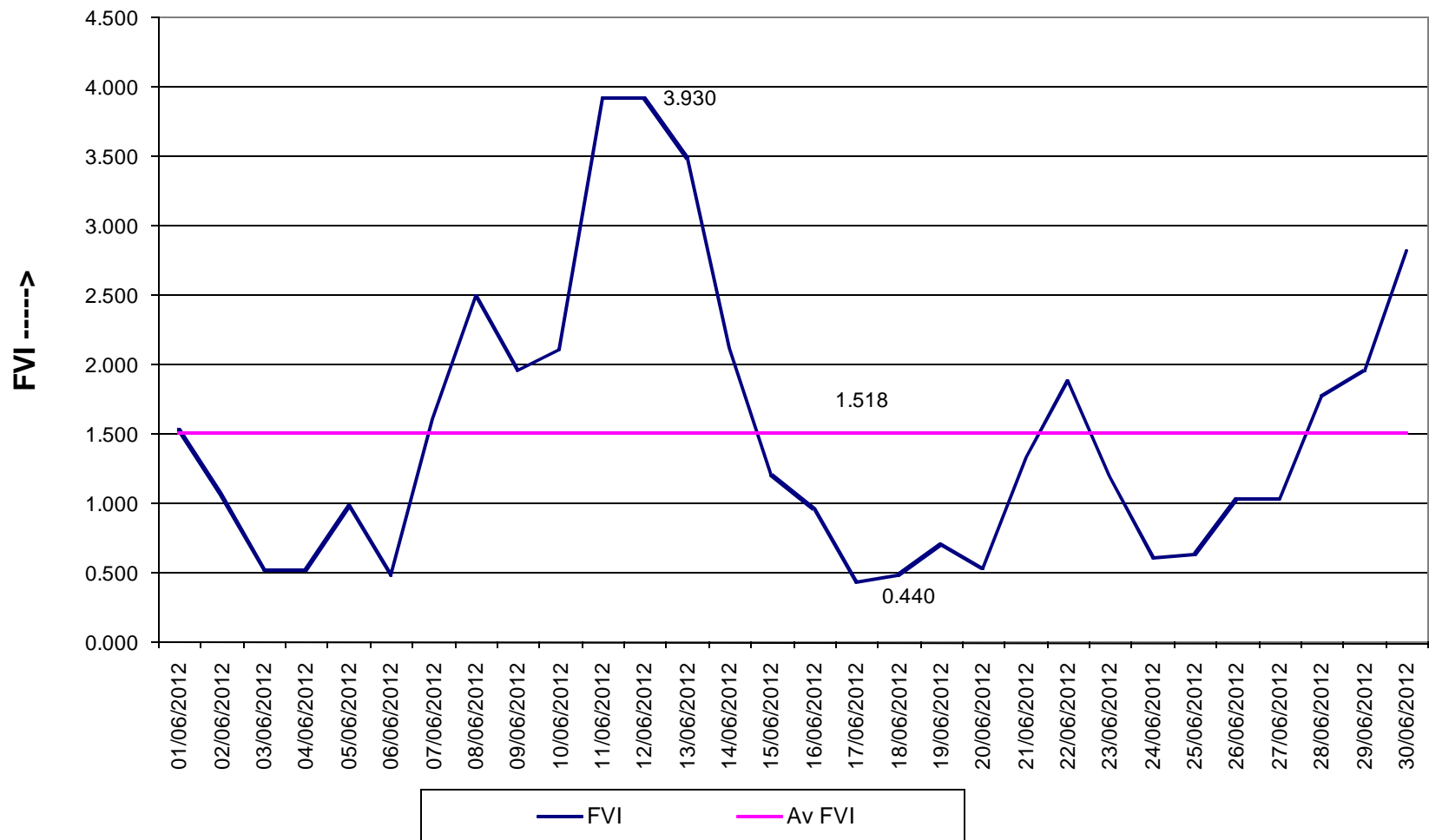


- N.B - 1. Draw als are at inletpoints.  
 2. NTPC to  
 ASEB 74.05 MU  
 MeSEB 23.93 MU  
 Nagaland 9.42 MU  
 Ar. Pradesh 4.28 MU  
 Mizoram 3.14 MU  
 3. Details of Bilateral transactions given in Annexure-III

### Frequency Duration for June, 2012

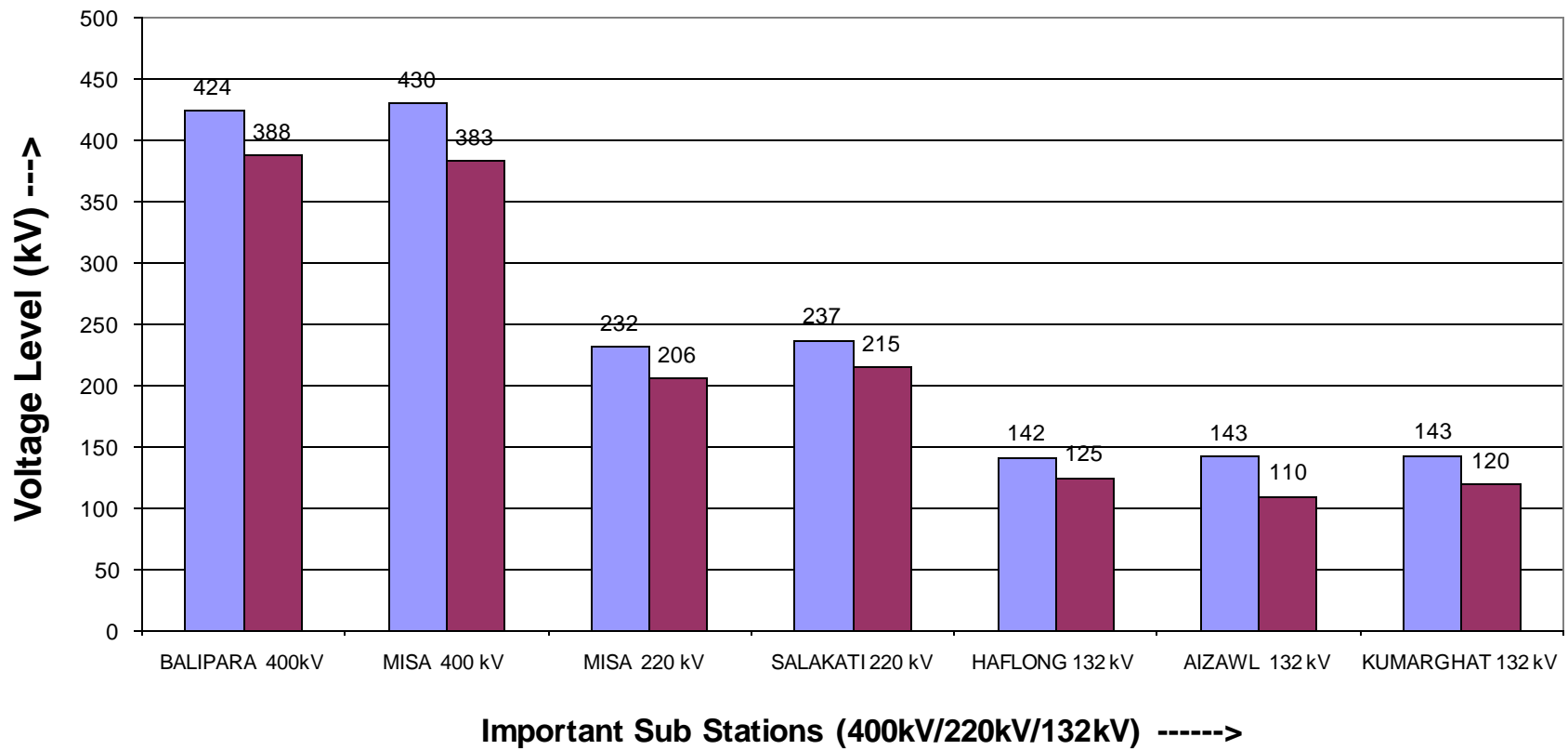


FVI Characteristics for June, 2012

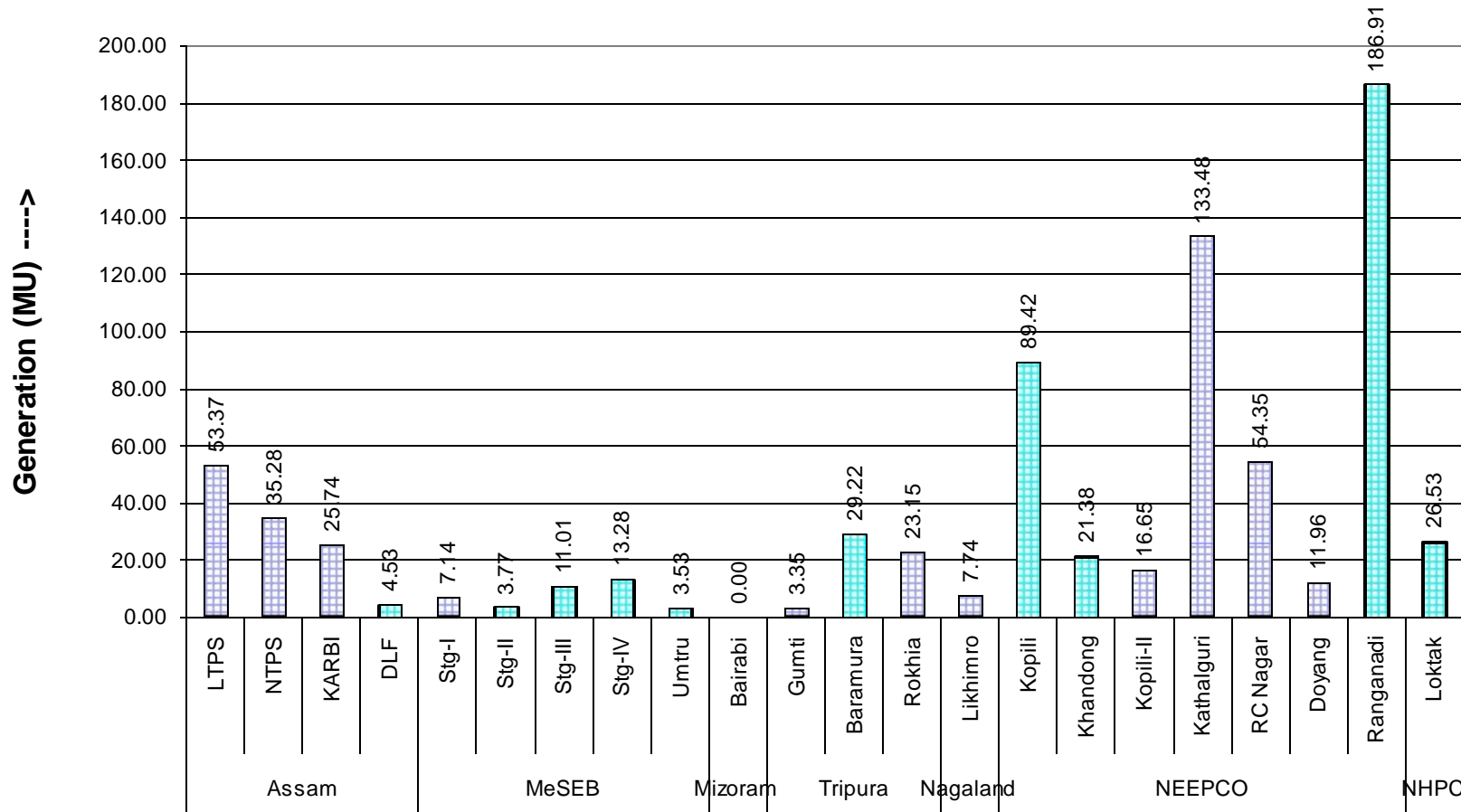


Maximum & Minimum Voltage Levels of Important Substations in NER during

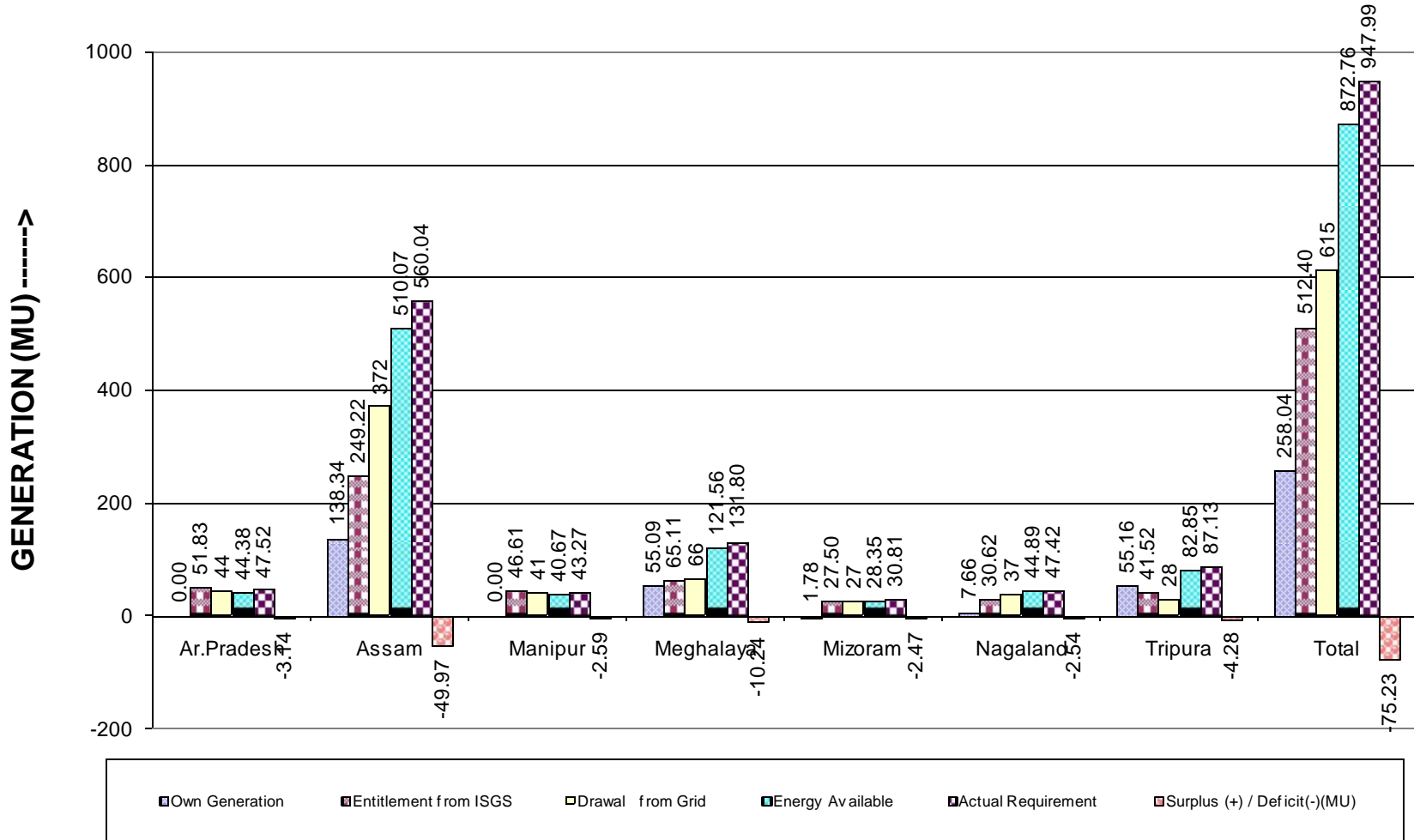
June, 2012



State and Central Sector Generation (MU) in NER in June, 2012



NER States Energy Scenario in June, 2012



Reservoir Statistics of NER in June, 2012

