



भारत सरकार Government of India

शक्ति विभाग Ministry of Power

केन्द्रीय बिजली प्राधिकरण

Central Electricity Authority

उत्तर-पूर्व क्षेत्रीय बिजली प्राधिकरण

North Eastern Regional Power Committee

शिल्लोंग Shillong

Progress Report

For the month of

August, 2012

CONTENTS

Sl. No.	Topics	Page No.
1	Brief Highlights of North Eastern Regional Power System	1
2	Salient Features	2
<u>DETAILS OF THE REPORT</u>		
3	Monthly Power Supply Position: (i) Energy generation in the Region (ii) Requirement Vs Availability in the Region (iii) Estimation of Peak Demand (MW) (iv) Estimation of Energy Requirement (MU)	3 3 4 4
4	Station wise Energy Generation (MU) & Peak Generation (MW): (i) State Sector (ii) Central Sector	5, 6 7
5	Plant Load Factor (PLF)	8
6	Voltage Profile of Important Sub-Stations	8
7	(i) Inter Regional Energy Exchange (ii) Major Grid disturbances (iii) Meetings held by NERPC	9 9 9
8	Status of progress of: (i) Generating Units (ii) Transmission Lines	10 11, 12
9	Commercial Status (i) UI Accounting (ii) Schedule and CS Share Allocation	13 14, 15
10	NER Grid Status on (i) Regional Peak Demand day (ii) Regional Minimum Demand day	16 17
<u>ANNEXURES</u>		
A-1	Major Reservoir Levels	I
A-2	Frequency Analysis and it's Profile	II
A-3	Scheduled Bilateral Exchanges	III
A-4	Energy Exchanges	IV
<u>EXHIBITS</u>		
B-1	Frequency Profile: (i) Duration of frequency in different ranges (ii) Frequency Variation Index	I II
B-2	Voltage Profile: (i) Voltage Profile of Important Sub-Stations	III
B-3	Energy Generation: (i) Energy Generation by Constituents during the month (ii) Energy scenario of State's during the month	IV V
B-4	Reservoir profile : (i) Reservoir statistics for the month	VI

NORTH EASTERN REGIONAL POWER COMMITTEE

Brief highlights of North Eastern Regional Power System for the month of August, 2012

- ❖ The maximum unrestricted demand during the month of August, 2012 was 1960 MW, which was 1946 MW in the month of July, 2012. The peak demand met in NER during the period under review was 1789 MW, which was 1762 MW last month.
- ❖ The energy requirement during the month of August, 2012 was 1070.19 MU, which was 1044.64 MU in the month of July, 2012. The energy availability in NER during the period under review was 1004.88 MU, which was 972.08 MU last month.
- ❖ The maximum, minimum & average system frequency were 50.69, 49.05 & 50.00 Hz respectively. The maximum, minimum & average FVI were 1.76, 0.20 & 0.459 respectively. The average FVI was less than its previous month's figure. (refer Annex-II).
- ❖ Maximum export of power from NER to ER was 186 MW (on 04/08/12 at 11:27 hrs) and that from ER to NER was 457 MW (01/08/12 at 14:52 hrs). Total net energy import during the month was 91.36MU (from ER).

**SALIENT FEATURES OF
NORTH EASTERN REGIONAL GRID FOR AUGUST, 2012**

		Nil	
		Nil	
		Aug-12	Aug-11
1	New unit/ transmission lines/Transformers commissioned during this month		
2	Number of total grid disturbance during this month		
3	Installed Capacity of the Region (in MW)(grid)	2190.82	2054.12
4	Energy Generation in MU (Gross)::		
	Thermal	366.164	363.573
	Hydel	523.011	644.913
	Diesel / Oil	0.000	0.000
	Total	889.175	1008.486
5	Demand in MW ::		
	Registered Peak demand	1960.00	1905.00
	Peak demand met	1789.00	1698.00
	Shortage (% age)	-8.72	-10.87
6	Regional Energy(Gross) in MU ::		
	Energy requirement	1070.19	1040.64
	Energy availability	1004.88	942.79
	Surplus (+) / Deficit (-) (% age)	-6.10	-9.40
7	Inter Regional Energy Exchange in MU ::		
	NER ----> ER	14.039	95.612
	ER ----> NER	105.397	59.376
	Net Import	91.358	-36.24
8	Frequency profile ::		
	Average frequency (Hz)	50.00	49.90
	Average Frequency Variation Index	0.459	0.615
9	Load Factor (in %)	68.91	66.52

ENERGY GENERATION IN THE REGION FOR THE MONTH OF Aug-12

All figures in MU

Constituents	Hydro		Coal / Oil fired		Gas Based(OpenCycle)		Gas Based(Com Cycle)		Total(gen)	Total(gen)
	Gross	Net	Gross	Net	Gross	Net	Gross	Net	Gross	Net
	A	B	C	D	E	F	G	H	I	J
State Sector :										
Assam	46.191	45.729	0.000	0.000	87.092	86.221	41.570	40.323	174.853	172.273
Meghalaya	71.881	71.162	0.000	0.000	0.000	0.000	0.000	0.000	71.881	71.162
Mizoram	4.521	4.476	0.000	0.000	0.000	0.000	0.000	0.000	4.521	4.476
Tripura	5.127	5.075	0.000	0.000	66.737	66.070	0.000	0.000	71.864	71.145
Nagaland	17.856	17.677	0.000	0.000	0.000	0.000	0.000	0.000	17.856	17.677
Total (State Sector)									340.975	336.734

Central Sector :										
NEEPCO :										
Khd+Kop+Kop-II	116.268	115.105	0.000	0.000	0.000	0.000	0.000	0.000	116.268	115.105
K'guri	0	0	0.000	0.000	0	0	144.152	139.827	144.152	139.827
RCNagar	0	0	0	0	53.134	52.603	0	0	53.134	52.603
Doyang	51.688	51.171	0	0	0	0	0	0	51.688	51.171
Ranganadi	164.464	162.819	0	0	0	0	0	0	164.464	162.819
NHPC :										
Loktak	74.396	73.652	0.000	0.000	0.000	0.000	0.000	0.000	74.396	73.652
Total (Central Sector)									604.102	595.178
Total NER	552.391	546.868	0.000	0.000	206.963	204.894	185.722	180.150	945.077	931.911

REQUIREMENT Vs AVAILABILITY IN THE REGION

STATES	ENERGY requirement (MU) at 50 Hz				POWER requirement (MW) at 50 Hz			
	<i>Availability & L/S at prevailing freq.</i>				<i>Availability & L/S at prevailing freq.</i>			
	Requirt.	Availy.	Shortfall	%Shortfall	Requirt.	Availy.**	Shortfall	%Shortfall
Ar.Pr.	54.08	51.13	2.96	5.47%	105	103	2	1.93%
Assam	638.07	597.04	41.04	6.43%	1171	1095	76	6.53%
Manipur	54.75	52.65	2.11	3.85%	120	119	1	0.98%
M'laya	139.83	130.28	9.55	6.83%	287	275	12	4.09%
Mizoram	35.00	33.45	1.55	4.42%	65	62	3	4.57%
Nagaland	47.21	44.41	2.80	5.92%	101	97	4	4.12%
Tripura	101.24	95.93	5.31	5.24%	211	178	33	15.45%
REGION	1070.19	1004.88	65.30	6.10%	1960	1789	171	8.72%

ESTIMATION OF PEAK DEMAND (in MW)

Constituents	Peak Demand Met	Date	Freq. (Hz)	Freq. Corr.**	L/S	Estimated Peak demand at 50 Hz
Arunachal Pradesh	103.00	11/08/2012	49.99	0.03	2	105.03
Assam	1095.00	31/08/2012	49.65	11.50	65	1171.50
Manipur	119.00	08/08/2012	49.95	0.18	1	120.18
Meghalaya	275.33	23/08/2012	49.87	1.07	11	287.07
Mizoram	62.12	22/08/2012	49.95	0.09	3	65.09
Nagaland	97.00	04/08/2012	49.60	1.16	3	101.16
Tripura	178.00	18/08/2012	49.90	0.53	32	210.53
REGION	1789.00	27/08/2012	49.87	6.98	164	1959.98

** Freq.Correction = Demand met x 0.03 x (50 - Av. Freq.)

ESTIMATION OF ENERGY REQUIREMENT (in MU)

Average Frequency 50.00 Hz

Constituents	Generation	Energy drawal from grid			Over(+) / Under(-) Drawal	Energy Availability*	Freq. Corr.**	L / S	Actual Requirement
		Entitlement frm ISGS of NER	Entitlement frm ISGS of ER	Drawal					
Ar.Pr.	0.000	53.481	2.792	51.126	-5.148	51.126	0.000	2.96	54.082
Assam	172.273	271.913	60.824	424.762	92.025	597.035	0.000	41.04	638.072
Manipur	0.000	61.902	0.000	52.645	-9.257	52.645	0.000	2.11	54.754
M'laya	71.162	51.123	19.561	59.119	-11.564	130.282	0.000	9.55	139.833
Mizoram	4.476	30.731	2.013	28.976	-3.768	33.452	0.000	1.55	34.999
Nagaland	17.677	39.250	6.107	26.737	-18.621	44.414	0.000	2.80	47.210
Tripura	71.145	48.055	0.000	24.787	-23.268	95.932	0.000	5.31	101.239
REGION	336.734	556.454	91.297	668.151	20.400	1004.885	0.000	65.30	1070.189

*Energy availability means energy consumed by constituents

** Freq.Correction = Demand met x 0.03 x (50 - Av.Freq.)

ENERGY GENERATED (MU) AND PEAK GENERATION (MW) FROM GENERATING STATIONS/UNITS:

Sl. No.	Power Stations / Units	Installed Capacity(MW)	Peak Generation(MW)	Energy Generation (MU)	
				Aug-12	Aug-11
STATE SECTOR : HYDRO					
ASSAM :: HYDRO					
1	KARBI HEP U - 1	50.00	50.90	24.732	34.420
2	KARBI HEP U - 2	50.00	50.66	21.459	35.802
TOTAL		100.00		46.191	70.222
MEGHALAYA :: HYDRO					
1	STAGE - 1	36.00	27.46	5.827	15.710
2	STAGE - 2	18.00	15.80	2.935	0.000
3	STAGE - 3	60.00	60.44	11.854	17.200
4	STAGE - 4	60.00	60.76	24.644	30.890
5	UMTRU	11.20	12.00	2.778	3.420
TOTAL		185.20		48.037	67.220
NAGALAND :: HYDRO					
6	LIKIMRO - 1				
7	LIKIMRO - 2	24.00	24.00	16.840	15.466
8	LIKIMRO - 3				
TOTAL		24.00		16.840	15.466
TRIPURA :: HYDRO					
9	GUMTI - 1	5.00	Gumti Stn. Peak = 7 MW	0.000	0.000
10	GUMTI - 2	5.00		2.696	2.516
11	GUMTI - 3	5.00		2.430	2.284
TOTAL		15.00		5.127	4.800
TOTAL STATE (HYDRO) :		324.20		116.195	157.708

ENERGY GENERATED (MU) AND PEAK GENERATION (MW) FROM GENERATING STATIONS/UNITS:

Sl. No.	Power Stations / Units	Installed Capacity(MW)	Peak Generation(MW)	Energy Generation (MU)	
				Aug-12	Aug-11
STATE SECTOR : THERMAL/GAS					
MIZORAM ::Thermal					
1	Bairabi	22.92	0.00	0.000	0.000
TRIPURA :: THERMAL					
1	BARAMURA - 1	5.00	Baramura Stn. Peak = 42 MW	0.000	0.000
2	BARAMURA - 2	5.00		0.000	0.000
3	BARAMURA - 3	6.50		0.000	0.000
4	BARAMURA - 4	21.00		14.973	15.413
5	BARAMURA - 5	21.00		15.500	15.509
6	ROKHIA - 1	8.00	Rokhia Stn. Peak = 53.5MW	0.000	0.000
7	ROKHIA - 2	8.00		0.000	0.000
8	ROKHIA - 3	8.00		0.000	0.000
9	ROKHIA - 4	8.00		3.865	4.056
10	ROKHIA - 5	8.00		0.000	0.000
11	ROKHIA - 6	8.00		4.072	0.000
12	ROKHIA - 7	21.00		13.463	13.022
13	ROKHIA - 8	21.00		14.865	13.694
	TOTAL	148.50		66.737	61.694
ASSAM :: THERMAL					
1	LTPS - 1	15.00	0	0.000	6.590
2	LTPS - 2	15.00	13.9	7.950	7.300
3	LTPS - 3	15.00	0.0	0.000	4.750
4	LTPS - 4	15.00	135	6.155	5.177
5	LTPS - 5	20.00	21.1	13.277	9.618
6	LTPS - 6	20.00	22.46	15.715	14.271
7	LTPS - 7	20.00	20.9	13.215	10.479
8	NTPS - 1	20.00	20.0	8.305	10.320
9	NTPS - 2	21.00	20.5	13.861	13.499
10	NTPS - 3	21.00	18.0	7.802	7.802
11	NTPS - 4	11.00	11.0	5.170	6.608
12	NTPS - 5	22.00	0.0	0.000	0.000
13	NTPS - 6	22.00	12.5	6.432	8.043
14	DLF	24.50	6.4	4.259	4.790
	TOTAL	261.50		102.141	109.247
TOTAL STATE THERMAL/GAS :		432.92		168.878	170.941
TOTAL SC GEN(HY+TH/GAS)		757.12		285.073	328.649

ENERGY GENERATED (MU) AND PEAK GENERATION (MW) FROM GENERATING STATIONS/UNITS:

Sl. No.	Power Stations / Units	Installed Capacity(MW)	Peak Generation(MW)	Energy Generation (MU)	
				Aug-12	Aug-11
CENTRAL SECTOR : HYDRO					
1	KHANDONG - 1	25.00	23.79	15.154	16.192
2	KHANDONG - 2	25.00	24.79	16.011	16.690
3	KOPILI Stg - II	25.00	24.01	14.945	15.777
4	KOPILI - 1	50.00	49.25	6.485	35.418
5	KOPILI - 2	50.00	0.00	0.000	36.612
6	KOPILI - 3	50.00	50.18	33.897	34.079
7	KOPILI - 4	50.00	50.74	29.776	35.204
8	DOYANG -1	25.00	25.00	17.228	5.206
9	DOYANG -2	25.00	25.85	16.976	18.014
10	DOYANG -3	25.00	26.31	17.484	18.300
11	LOKTAK - 1	35.00	37.86	24.376	21.302
12	LOKTAK - 2	35.00	37.53	25.015	22.679
13	LOKTAK - 3	35.00	37.62	25.005	19.852
14	RANGANADI - 1	135.00	137.71	56.560	64.459
15	RANGANADI - 2	135.00	136.81	55.453	61.222
16	RANGANADI - 3	135.00	140.05	52.451	66.199
TOTAL HYDRO :		860.00		406.816	487.205
CENTRAL SECTOR : THERMAL/GAS					
1	KATHALGURI - 1	33.50	33.13	21.378	17.046
2	KATHALGURI - 2	33.50	0.00	0.000	19.129
3	KATHALGURI - 3	33.50	32.45	21.739	16.258
4	KATHALGURI - 4	33.50	33.68	21.680	9.107
5	KATHALGURI - 5	33.50	34.77	20.858	18.994
6	KATHALGURI - 6	33.50	35.48	20.933	21.351
7	KATHALGURI - 7	30.00	13.45	6.336	12.894
8	KATHALGURI - 8	30.00	29.90	14.885	6.945
9	KATHALGURI - 9	30.00	28.57	16.343	15.425
10	R.C.NAGAR - 1	21.00	22.59	15.600	14.472
11	R.C.NAGAR - 2	21.00	16.92	7.258	14.201
12	R.C.NAGAR - 3	21.00	22.11	15.281	14.237
13	R.C.NAGAR - 4	21.00	21.27	14.995	12.574
TOTAL THERMAL/GAS :		375.00		197.286	192.632
TOTAL CS (HY + TH/GAS) :		1235.000		604.102	679.838
TOTAL NER GEN(HY+TH/GAS) :		1992.120		889.175	1008.486

Plant Load Factor (PLF) and Voltage Profile :

Aug-12

PLANT LOAD FACTOR OF THE THERMAL/ GAS STATIONS IN NER

Sl. No.	Power Station	State/ Constituent	Installed Capacity (MW)	Generation (in MU)	Stationwise PLF (%)
1	LTPS*	AEGCL	120.00	56.312	63.07
2	NTPS*	AEGCL	117.00	41.570	47.76
3	Baramura	Tripura	58.50	30.473	70.01
4	Rokhia	Tripura	90.00	36.264	54.16
5	AGBPP	NEEPCO	291.00	144.152	66.58
6	AGTPP	NEEPCO	84.00	53.134	85.02

*LTPS-- Lakwa Thermal Power Station, NTPS-- Namrup Thermal Power Station

VOLTAGE PROFILE :

A. MAXIMUM AND MINIMUM VOLTAGE (kV) OF IMPORTANT SUB - STATIONS :

Sl. No.	NAME OF S/S	MAXIMUM (kV)	MINIMUM (kV)
1	BALIPARA 400 kV	416	377
2	MISA 400 kV	420	392
3	MISA 220 kV	239	210
4	SALAKATI 220 kV	232	216
5	HAFLONG 132 kV	139	124
6	AIZAWL 132kV	139	117
7	KUMARGHAT 132kV	140	124

Voltage Range in kV as percentage of time for the block

SUB-STATION	kV < 360	360<kV<380	380<kV<420	kV>420
MISA	0.00	0.00	99.34	0.66
BALIPARA	2.37	0.00	97.63	0.00

1 **INTER - REGIONAL EXCHANGE :**

All Fig in MU

NER to ER	14.039
ER to NER	105.397
NET IMPORT	91.358

2 **Major Grid Disturbances during this month**

Nil

3 **MEETING HELD BY NERPC DURING THIS MONTH**

1. 76th OCC Meeting was held on 08.08.12 at Guwahati.

PROGRESS OF GENERATION PROJECTS IN NER				
Name of the Generation Scheme	No. of Units	Capacity (MW)	Commissioning Schedule	REMARKS
[A] NEEPCO				
1. Monarchak TGBPP		104	2013	Activities in progress
2. Tuirial HEP Mizoram	2	2 X 30	2015	Being reviewed by PIB
3. Kameng HEP A. Pradesh	4	4X150	2017	Activities in progress
4. Tuival H.E. Proj. Mizoram	3	3X70	2015	Status not available
5. Tipaimukh HEP		1500	2015	Activities in progress
6. Mawphu HEP	2	90	2015	UNDER CCEA
7. Pare HEP, Ar. Pradesh		110	2015	UNDER CCEA
[B] NHPC				
a). Loktak Downstream HEP	2	66	2014	Activities in progress
b) Subansiri Lower HEP		2000	2016-17	Activities in progress
c) Siang Middle HEP		2000	2016	Activities in progress
d) Subansiri Upper HEP		2000	DPR Under prep	
e) Subansiri Middle HEP		1000	DPR Under prep	
f) Dibang Multipurpose Project		3000	Under TEC	
[C] NTPC				
a). Bongaigaon TPS	3	3X250	2013-14	Activities in progress
[D] JV PROJECT				
a). Palatana CCPP	2	2X323.3	2012	Activities in progress
[E] ASSAM				
(a) Lakwa WHRP		37.2	2012	Activities in progress
(b) Namrup CCPP	2	2X40	2014	
[F] MIZORAM				
(a) Tuivai Hydel Project	2	51	2015	Activities in progress
(b) Bairabi Dam Project	2	2 X 40	2015	Activities in progress
(G) MeECL				
(a) Myntdu - Leishka HEP	2+1	3x42	2012-13	Activities in progress
(b) New Umtru HEP	2	2X20	2014-15	Activities in progress

PROGRESS OF TRANSMISSION LINES IN NE REGION									
	Name of the line	Length	Comm'n'g Sch		Total no.	Stubs com -	Tower	Stringing	Remarks
		(ckt kms)	Ann.pl	Ant/revd	of locs .	pleted(nos)	Erected	complt-ckm	
A : Lines under ASEB:									
1	LILO of 400 kV D/C Ranganadi-Balipara at Kukurmara	20	Jul-13		20				Deposit work to PGCIL
2	220 kV, D/C Bongaigaon TPS (NTPC) -Rangia	360	Dec-13		479	6			Design apprvd, prototype test
3	220 kV, S/C BTPS(AEGCL) - Agia-Sarusajai-II	198	Mar-12		601	601	0		
4	220 kV S/C (on D/C) Namrup TPS-Mariani	141	May-13	Dec-13					Contract awarded
5	LILO of 220 kV D/C Agia-Sarusajai at Kukurmara	4	Feb-12		8	4			Work in progress
6	132 kV D/C BTPS - Kokrajhar	18	Dec-12	Aug-12	75				Work order placed
7	132 kV D/C Kokrajhar-Bilashipara-Gauripur	70	Oct-13	Dec-13	121				
8	132 kV D/C Kukurmara-Azara	6	Dec-12	May-12	28				Contract awarded
9	132 kV D/C Kukurmara- Boko	25	May-13						Row Problem
B : Lines under MeECL :									
1	LILO of 400kV D/C Silchar - Bongaigaon at Killing (Byt	9	Dec-12		1				Evaluation of tender in progress
2	132 kV S/C New Umtru HEP-Norbong (EPIP II)	3	Mar-12						
3	132 kV D/C Killing(Byrmihat)-EPIP I	17	Mar-12						Work in progress
4	132 kV D/C Mawngap - Sumer	66	Dec-11	Dec-12	102	102	102	66	
5	132 kV D/C Rongkhon - Ampati	33	Mar-12	Mar-13	103				Work in progress
6	132 kV S/C Nangalbibra - Agia	92	Mar-12		316	316	316	91	Work in progress
7	LILO of 132 kV S/C Agia-Nangalbibra at Mendipathar	5	Mar-12	Nov-12	9	9	5	0	
8	LILO of 132 kV D/C Mawlai-Cherrapunjee at Mawngap	5	Dec-11	Dec-12	15	10	5	0	
9	LILO of 132 kV D/C Mawlai-nangalbibra at Mawngap	3	Mar-12	Dec-12	13				Work in progress
C : Lines under Mizoram :									
1	LILO of 132 kV S/C Zemabak - W. Phaileng at Sinh	5	Dec-11						
D : Lines under TSECL :									
1	400 kV D/C Purba kanchan Bari- Surajmani Nagar	260	Mar-12						Fund not yet tied up.
2	132 kV D/C Surjyamani Nagar - 79 Tilla (Agartala)	36	Mar-12		41	18			Work in progress
3	132 kV D/C Surjyamani Nagar - Badarghat	6	Mar-12						Fund not yet tied up.
4	132 kV D/C Surjyamani Nagar - Budhjangnagar	36	Apr-12		63	25			ROW problem
5	132 kV D/C Surjyamani Nagar - Rokhia	35	Mar-12						Fund not yet tied up.
6	132 kV D/C Surjyamani Nagar - Udaipur	50	Mar-12						Fund not yet tied up.
E : Lines under NETC :									
1	400 kV D/C Palatana - Silchar	492	Feb-12	Jul-12	680	680	680	495	Forest clearance awaited
2	400 kV D/C Bongaigaon- Silchar	830	Jun-12	Apr-13	1150	950	886	440	Forest clearance awaited

	Name of the line	Length (ckt kms)	Comm'ing Sch		Total no. of locs	Stubs com - pleted(nos)	Tower Erected	Stringing complt-ckm	Remarks
			Ann.pl	Ant/revd					
F : POWERGRID Lines:									
1	+/- 800kv HVDC Bipole Biswanath Chariyali - Agra	1971	Aug-13	Sep-14	4228	3351	2710	461	Matching with HVDC Converter
2	400kV Balipara - Biswanath Chariyali D/C	130	Aug-13	Aug-13	167	144	137	67	Matching with L. Subansiri
3	LILO of 400 kv Ranganadhi Balipara D/C at Biswanath	54	Aug-13	Aug-13	76	70	69	20	Matching with Gen. of L.Subansi
4	132 kV D/C B. Chariyali-B. Chariyali (AEGCL)	32	Aug-13	Aug-13	55	21	2		
5	400 kV Kameng-Balipara D/C	110	Feb-13	Mar-14	142	57	9	0	Matching with Gen. of Kameng
6	400kV Balipara- Bongaigaon D/C line	596	Feb-13	Feb-13	837	769	661	224	Matching with Gen. of Kameng
7	400kV Lower Subansari-Biswanath Charrali line-I	334	Feb-13	Dec-13	444	316	218	56	Matching with Gen. Project
8	400kV Lower Subansari-Biswanath Charrali Line-II	340	Feb-13	Feb-13	442	325	196	35	Matching with Gen. Project
9	132 kV Kopili- Khandong-II	12	Sep-09		43	37	24	8	Forest clearance awaited
10	400 kV D/C Bongaigaon TPS-Bongaigaon line	6	Mar-12		11	8	4	0	
11	400kV D/C Pallatana- Surajmani –nagar line	70	Dec-11	Jun-12	118	118	118	74	Compl. of Suraj-maninagar by TSECL
12	400kV D/C Silchar-Purba Kanchan Bari line	252	Mar-12	Jun-12	373	308	196	38	ROW problem
13	400kV D/C Silchar-Melriat(New) line	320	Dec-12	Mar-13	435	135	89	32	1 st Stg Forest clearance awaited
14	400kV D/C Silchar-Imphal(New) line	280	Dec-12	Jun-12	427	134	25	0	Likely to be delayed
15	220kV D/C Mariani(New)-Mokikchung(PG)	112	Dec-12	Mar-13	160	46	25	0	Efforts to be made to match U#2 of Palatana GBPP
16	132kV Silchar-Badarpur(PG) SW Interconnecting line	42	Nov-11		69	68	64	28	To match with U#1 of Palatana
17	132kV D/C Melriat(New)- Melriat (Mizo) Interconnecting line	60	Dec-12	Mar-13	85				Melriat S/s by Mizoram
18	132kV D/C Silchar-Srikona (AEGCL) line	6	Dec-11		10	7	7	2	Award Placed
19	132kV D/C Silchar-Hailakandi (AEGCL) line	50	Dec-11		65	65	65	39	Completion matching with S/S
20	132kV D/C Mokikchung(PG)- Mokikchung(Naga) line	2	Dec-12	Mar-13	4				Efforts to be made to match U#2 of Palatana GBPP
21	132 kV S/C Pasighat-Roing line (on D/C)	70	Dec-12	Mar-13	550	124	39	0	Completion matching with S/S.
22	132 kV S/C Roing-Tezu line (on D/C)	60	Dec-12	Mar-13					Engg. in progress
23	132 kV S/C Tezu-Namsai line (on D/C)	90	Dec-12		180	8			Completion matching with S/S.
24	LILO of 400kV S/C Kathalguri -Misa line at Mariani(Ne)	2	Dec-12		20				
25	LILO of 132 kV S/C Loktak-Imphal line at Imphal (Ne)	60	Dec-12		150				
26	220 kV D/C Bongaigaon TPS (NTPC-Bongaigaon)	15	Dec-12		11	10	10	3	

UI Receivable/ Payable for the month of**Aug-12**

Organisation	Actual (MU)	Schedule (MU)	UI Energy (MU)	UI Receivable (Rs. in Lakhs)	UI Payable (Rs. in Lakhs)
Arunachal Pradesh	51.126	56.273	-5.148	111.382	16.412
ASEB	424.762	380.063	44.699	25.924	800.619
Manipur	52.645	68.788	-16.143	274.648	0.634
MeSEB	59.119	60.231	-1.111	95.448	55.529
Mizoram	28.976	35.803	-6.827	121.819	0.010
Nagaland	26.737	30.962	-4.225	70.712	4.531
Tripura	24.787	22.707	2.080	46.567	90.067

Entitlement, Schedule, Drawal and UI Charges**Aug-12**

Name of beneficiaries	Entit. from scheduled energy from ISGS in NER (Ex-PP State)	Entit. from scheduled energy from ISGS in ER (Ex-PP State)	Total Entitlement (Ex-PP State) (in MU)	Schedule (Ex-PP State) (in MU)	Actual Drawal from Grid (MU)	Over Drawal (+) / Under Drawal (-) (MU)	UI Payable (-)/ Receivable (+) (Rs. In Cr)
Arunachal Pradesh	53.481	2.792	56.273	56.273	51.126	-5.148	0.950
ASEB	271.913	60.824	332.737	380.063	424.762	44.699	-7.747
Manipur	61.902	0.000	61.902	68.788	52.645	-16.143	2.740
MeSEB	51.123	19.561	70.684	60.231	59.119	-1.111	0.399
Mizoram	30.731	2.013	32.743	35.803	28.976	-6.827	1.218
Nagaland	39.250	6.107	45.357	30.962	26.737	-4.225	0.662
Tripura	48.055	0.000	48.055	22.707	24.787	2.080	-0.435

(Source : UI A/c, NERPC)

* In addition to total entitlement, bilateral exchanges and purchase/sell through traders/exchange are covered in Annexure-III

Schedule for ISGS's Generation and State's Drawl for the month of

Aug-12

States	Schedule From ISGS(MWH)	Bilateral Schedule from Outside NER (MWH)	Total Schedule (MWH)	Ex.PP. Drawal (MWH)	Tr. Energy (MWH)
Arunachal Pradesh	54722.79	2823.90	57546.69	52484.15	57546.69
ASEB	279133.33	61689.48	340822.80	436050.10	436050.10
Manipur	63216.50		63216.50	54044.10	63216.50
MeSEB	52596.96	19900.00	72496.96	60690.34	72496.96
Mizoram	31611.25	2048.15	33659.40	29745.79	33659.40
Nagaland	40291.37	6195.95	46487.32	27447.03	46487.32
Tripura	48911.53		48911.53	25445.35	48911.53
Total	570483.73	92657.48	663141.20	685906.86	758368.50

ISGS	Schedule (MWH)	Injection (MWH)
LOKTAK	62999.63	61373.27
KHANDONG	30822.50	32813.36
KOPILI-I	69432.69	67321.71
KOPILI-II	14557.90	15375.17
DHEP	48608.29	32092.02
RHEP	168028.50	222795.71
AGTPP	46406.92	55348.63
AGBPP	129627.31	133336.04
Total	570483.73	620455.92

Source : Provisional REA for the month:

Aug-12

Cumulative wt. Average Share Allocation (%) (Up to this month) in CS Stations

States	KOPILI	KOPILI-II	KHANDONG	RHEP	DHEP	AGBPP	AGTPP	Loktak HEP
	(200 MW)	(25 MW)	(50 MW)	(405 MW)	(75 MW)	(291 MW)	(84 MW)	(90 MW)
Arunachal Pradesh	5.191	5.992	4.194	18.462	6.852	5.694	6.132	4.940
Assam	53.455	52.355	56.285	43.328	43.808	56.503	45.585	29.445
Manipur	7.395	6.945	6.555	8.373	7.865	8.105	8.313	30.115
Meghalaya	17.395	13.675	16.905	11.505	11.455	11.815	11.813	12.393
Mizoram	4.610	6.040	3.940	5.700	5.250	5.410	5.980	5.020
Nagaland	6.147	5.735	6.653	5.335	17.967	5.805	5.377	6.435
Tripura	5.807	9.258	5.468	7.297	6.803	6.668	16.800	11.652
Total	100.00	100.00	100.00	100.00	100.00	100.00	100.00	100.00

Details of Fixed and Energy Charges of CS Stations for FY 2011-12

Projects	Installed Capacity (MW)	Design Energy (GWh)	Annual Fixed Charge (Rs. Crore)	Reference
KOPILI HEP	200	1186.14*	81.2979 *	*As per CERC order dated 30.09.2011 in petition No 294/2009.
KOPILI -II	25	86.3*	13.3856 **	* Provisional, ** As per CERC order dated 01.01.08 in pet. No 70/2006
KHANDONG HEP	50	277.61*	44.7731 *	*As per CERC order dated 30.09.2011 in petition No 297/2009.
RHEP*	405	1509.69	291.3941	*As per CERC order dated 10.05.2011 in petition No.296/2009.
DHEP	75	227.24	58.5 *	*As per CERC order dated 03.10.07 in petition No 88/2007.
AGBPP	291	NA	238.82 *	As per CERC order dated 6.9.2011 in Pet.No295 / 2009
AGTPP	84	NA	69.8278 *	Base Rate of energy Charge as per the CERC Order
LOKTAK HEP	105	448.00	101.2114 *	*As per CERC order dated 11.03.11 in Pet.No 299/2009,^Base Engy. charge as per CERC order
				*As per CERC order dated 14.06.11 in Pet.No 108/2010

HOURLY DATA ON PEAK DEMAND MET DAY

DATE:- 02.08.2012

All figures in MW

HRS.	Total ISGS Injection (MW)	STATE SECTOR																		ER					
		ASEB			MeSEB			Tripura			Manipur		Mizoram			Nagaland		Ar. Pradesh			Total N.E.R GEN	Total Demand Met	Gross Demand met	Actual Loss	Total Drawal by States
		GEN	Drawal	Demand Met	GEN	Drawal	Demand Met	GEN	Drawal	Demand Met	Drawal	Demand Met	GEN	Drawal	Demand Met	Drawal	Demand Met	Drawal	Demand Met						
1	787.47	203	512.77	715.8	51	113.91	164.4	89	46.157	134.8	56.1792	56.18	6.76	28.4976	35.26	29.136	29.14	73.544	73.54	97.78	1136.33	1209.05	1234.16	25.1	762.36
2	800.12	203	529.00	732.0	51	126	176.5	89	49.45	138.0	41.0352	41.04	6.75	25.6608	32.41	31.462	31.46	74.179	74.18	88.83	1148.97	1225.64	1237.85	12.2	787.91
3	799.66	203	570.30	773.3	51	152.36	202.9	89	50.976	139.6	27.0336	27.03	6.75	23.9328	30.68	28.99	28.99	70.132	70.13	145.66	1148.51	1272.58	1294.23	21.6	778.01
4	795.28	203	548.08	751.1	51	113.56	164.1	89	45.898	134.5	23.9904	23.99	6.76	21.9024	28.66	28.068	28.07	72.448	72.45	77.72	1144.15	1202.81	1221.92	19.1	776.18
5	802.94	202	512.71	714.7	4	113.94	118.3	89	38.064	126.9	27.7392	27.74	6.75	24.5232	31.27	31.433	31.43	72.106	72.11	45.87	1104.82	1122.39	1150.74	28.3	774.60
6	804.81	202	472.41	674.4	4	136.74	141.1	89	28.637	117.4	61.632	61.63	6.74	33.1776	39.92	36.821	36.82	70.972	70.97	62.53	1106.67	1142.26	1169.25	27.0	777.81
7	817.72	202	500.20	702.2	4	82.755	87.1	89	32.554	121.4	69.6528	69.65	6.78	49.392	56.17	41.918	41.92	78.422	78.42	71.42	1119.62	1156.80	1191.09	34.3	783.43
8	806.85	202	486.19	688.2	4	95.243	99.6	89	38.506	127.3	77.496	77.50	6.77	55.5552	62.33	38.316	38.32	84.254	84.25	90.73	1108.75	1177.45	1199.53	22.1	784.77
9	767.55	201	508.57	709.7	4	140.15	144.5	75	36.077	111.5	42.8304	42.83	6.99	44.4096	51.40	25.37	25.37	69.412	69.41	129.72	1055.42	1154.69	1185.19	30.5	737.06
10	901.72	201	512.72	713.8	4	134.68	139.1	75	37.402	112.8	38.8608	38.86	6.81	38.4336	45.24	18.559	18.56	71.437	71.44	0.37	1189.41	1139.78	1189.83	50.1	851.67
11	889.42	201	540.29	741.4	4	123.49	127.9	75	34.09	109.5	48.5472	48.55	6.78	34.416	41.20	17.926	17.93	77.643	77.64	8.23	1177.07	1164.06	1185.35	21.3	868.13
12	883.50	201	520.24	721.3	4	124.19	128.6	75	32.602	108.0	53.616	53.62	6.79	37.6848	44.47	36.602	36.60	73.554	73.55	42.56	1171.16	1166.15	1213.77	47.6	835.87
13	912.02	200	538.03	737.8	46	133.02	179.4	76	30.922	106.4	51.0912	51.09	6.80	37.8432	44.64	45.178	45.18	83.258	83.26	39.96	1240.46	1247.78	1280.47	32.7	879.33
14	918.27	200	467.56	667.3	46	66.387	112.8	76	22.426	97.9	54.5136	54.51	6.77	39.4704	46.24	25.45	25.45	78.041	78.04	-130.40	1246.68	1082.25	1116.34	34.1	884.19
15	928.73	200	523.66	723.4	46	78.346	124.7	76	43.536	119.0	60.6672	60.67	6.79	43.3152	50.11	38.066	38.07	76.63	76.63	-33.52	1257.16	1192.65	1223.69	31.0	897.69
16	855.81	200	558.54	758.3	46	117.37	163.8	76	45.053	120.6	54.8592	54.86	6.99	54.1008	61.09	43.214	43.21	72.351	72.35	113.53	1184.44	1274.12	1298.02	23.9	831.91
17	911.89	201	570.71	771.5	46	97.176	143.6	75	39.504	114.9	57.1536	57.15	6.79	52.7616	59.55	39.355	39.36	86.479	86.48	64.23	1241.28	1272.54	1305.62	33.1	878.81
18	946.10	201	644.25	845.1	46	114.03	160.4	75	59.386	134.8	75.2832	75.28	6.83	50.2992	57.13	45.295	45.30	93.253	93.25	150.16	1275.53	1411.24	1425.79	14.6	931.54
19	937.45	201	779.27	980.1	46	98.21	144.6	75	61.402	136.8	94.2288	94.23	6.78	62.5392	69.32	48.058	48.06	103.05	103.05	346.54	1266.84	1576.14	1613.48	37.3	900.11
20	944.47	201	696.33	897.2	46	96.128	142.5	75	68.179	143.6	91.5984	91.60	6.79	57.6288	64.42	43.006	43.01	107.49	107.49	237.16	1273.87	1489.76	1511.13	21.4	923.10
21	946.70	201	733.53	934.0	55	62.736	117.6	75	68.477	143.9	102.422	102.42	6.78	52.9488	59.73	43.529	43.53	105.73	105.73	252.39	1284.27	1506.95	1536.76	29.8	916.89
22	943.63	201	718.17	918.7	55	76.427	131.3	75	64.186	139.6	107.112	107.11	6.78	45.4464	52.23	40.817	40.82	98.793	98.79	234.46	1281.21	1488.52	1515.77	27.2	916.39
23	955.77	201	691.29	891.8	55	91.224	146.1	75	63.283	138.7	93.1104	93.11	6.77	35.6112	42.38	30.432	30.43	78.31	78.31	158.75	1293.33	1420.82	1452.14	31.3	924.45
24	949.08	201	653.37	853.9	55	87.742	142.6	75	51.235	126.6	81.7824	81.78	6.78	28.656	35.44	24.058	24.06	73.496	73.50	86.87	1286.65	1337.91	1373.58	35.7	913.41
Max	955.77	203	779.27	980.10	54.89	152.36	202.88	88.80	68.48	143.88	107.11	107.11	6.99	62.54	69.32	48.06	48.06	107.49	107.49	346.54	1293.33	1576.14	1613.48	50.1	931.54
Min	767.55	200	467.56	667.30	4.36	62.74	87.11	75.40	22.43	97.93	23.99	23.99	6.74	21.90	28.66	17.93	17.93	69.41	69.41	-130.40	1055.42	1082.25	1116.34	12.2	737.06

HOURLY DATA ON **MINIMUM DEMAND MET DAY**

DATE:- **01.08.2012**

All figures in MW

HRS.	Total ISGS Injection (MW)	STATE SECTOR																			ER	Total N.E.R GEN	Total Demand Met	Gross Demand met	Actual Loss	Total Drawal by States
		ASEB			MeSEB			Tripura			Manipur		Mizoram			Nagaland		Ar. Pradesh								
		GEN	Drawal	Demand Met	GEN	Drawal	Demand Met	GEN	Drawal	Demand Met	Drawal	Demand Met	GEN	Drawal	Demand Met	Drawal	Demand Met	Drawal	Demand Met	IMPORT(+)/EXPORT(-)						
1	783.76	176	726.98	903.4	42	77.792	119.9	76	54.614	130.1	48.5808	48.58	6.45	26.1216	32.57	30.499	30.50	62.974	62.97	270.76	1084.20	1328.00	1355.01	27.0	756.76	
2	776.29	176	712.26	888.7	42	78.96	121.1	76	45.85	121.3	43.0272	43.03	6.60	24.3072	30.91	29.868	29.87	69.568	69.57	246.75	1076.88	1304.43	1323.67	19.2	757.04	
3	769.24	176	725.06	901.5	42	84.264	126.4	76	43.718	119.2	29.1696	29.17	6.67	22.68	29.35	29.429	29.43	67.705	67.70	252.44	1069.90	1302.68	1322.39	19.7	749.53	
4	761.40	176	695.81	872.2	42	104.95	147.0	76	39.082	114.6	24.9648	24.96	6.64	22.9392	29.58	29.503	29.50	64.892	64.89	240.34	1062.03	1282.77	1302.42	19.6	741.75	
5	768.09	177	596.45	773.7	42	112.88	154.9	76	33.706	109.2	17.3136	17.31	6.67	25.4304	32.10	30.998	31.00	55.787	55.79	143.97	1069.55	1174.03	1213.57	39.5	728.55	
6	774.75	177	495.55	672.8	42	112.88	154.9	76	25.594	101.1	65.4432	65.44	6.66	40.9968	47.66	39.713	39.71	70.502	70.50	119.82	1076.20	1152.13	1188.41	36.3	738.48	
7	892.32	177	534.39	711.7	42	129.87	171.9	76	29.971	105.5	88.1376	88.14	6.69	53.0784	59.77	39.022	39.02	79.793	79.79	90.91	1193.80	1255.74	1284.76	29.0	863.30	
8	771.37	177	585.71	763.0	42	97.987	140.0	76	31.814	107.3	89.6784	89.68	6.69	55.0224	61.71	35.95	35.95	84.428	84.43	175.73	1072.85	1282.07	1248.63	-33.4	804.81	
9	708.14	177	610.54	787.5	42	71.608	113.7	76	37.862	113.6	74.9952	75.00	6.68	45.5472	52.23	37.339	37.34	84.162	84.16	271.29	1009.59	1263.50	1280.93	17.4	690.71	
10	728.78	177	675.79	852.8	42	69.4	111.5	76	42.566	118.3	79.2096	79.21	6.57	40.104	46.67	34.836	34.84	75.163	75.16	304.94	1030.12	1318.41	1335.11	16.7	712.08	
11	708.43	177	479.72	656.7	42	56.139	98.2	76	41.366	117.1	75.4944	75.49	6.54	37.6416	44.18	32.287	32.29	73.851	73.85	105.28	1009.74	1097.81	1115.07	17.3	691.17	
12	658.31	177	542.24	719.2	42	84.792	126.9	76	39.226	114.9	79.4736	79.47	6.46	33.9264	40.39	30.307	30.31	74.361	74.36	215.76	959.54	1185.55	1175.35	-10.2	668.52	
13	586.30	176	533.88	710.0	43	78.173	121.2	76	43.834	119.3	75.0528	75.05	6.57	38.16	44.73	34.253	34.25	69.21	69.21	303.00	887.51	1173.77	1190.56	16.8	569.50	
14	591.34	176	514.35	690.5	43	92.234	135.3	76	44.458	120.0	69.696	69.70	6.59	40.464	47.05	38.69	38.69	63.065	63.07	290.27	892.57	1164.19	1182.89	18.7	572.64	
15	529.95	176	555.54	731.6	43	116.16	159.2	76	44.266	119.8	71.6592	71.66	6.66	46.3104	52.97	38.633	38.63	60.838	60.84	430.78	831.25	1234.71	1262.07	27.4	502.59	
16	614.28	176	445.49	621.6	43	115.47	158.5	76	41.51	117.0	93.6096	93.61	6.63	51.8832	58.51	45.574	45.57	61.204	61.20	260.56	915.55	1156.01	1176.16	20.2	594.13	
17	773.14	175	347.26	521.8	43	72.216	115.1	76	46.675	122.2	92.688	92.69	6.67	39.1392	45.81	29.652	29.65	78.309	78.31	-4.49	1072.75	1005.55	1068.37	62.8	710.33	
18	784.98	175	519.23	693.7	43	129.67	172.6	76	67.315	142.8	79.2576	79.26	6.51	53.6256	60.14	49.654	49.65	83.094	83.09	209.93	1084.43	1281.30	1294.47	13.2	771.82	
19	907.73	175	596.34	770.8	43	162.61	205.5	76	92.006	167.5	94.632	94.63	6.65	57.744	64.39	54.643	54.64	98.818	98.82	334.89	1207.32	1456.39	1542.32	85.9	821.80	
20	903.01	175	591.75	766.3	43	49.256	92.2	76	68.669	144.2	95.7168	95.72	6.65	58.1184	64.77	50.059	50.06	106.81	106.81	152.22	1202.60	1319.97	1354.92	34.9	868.06	
21	889.28	175	548.98	724.2	43	64.714	107.7	76	68.054	143.6	91.2912	91.29	6.67	58.6944	65.36	46.598	46.60	104.03	104.03	122.37	1189.66	1282.75	1312.13	29.4	859.89	
22	880.34	175	531.08	706.3	43	56.11	99.1	76	60.413	135.9	88.824	88.82	6.65	49.3056	55.96	41.878	41.88	98.622	98.62	84.68	1180.70	1226.59	1265.48	38.9	841.45	
23	779.97	175	499.28	674.5	43	38.784	81.7	76	49.104	124.6	77.1408	77.14	6.63	38.3328	44.96	34.728	34.73	81.209	81.21	46.68	1080.31	1118.92	1127.04	8.1	771.85	
24	653.53	175	495.84	671.1	43	113.57	156.5	76	51.84	127.3	70.272	70.27	6.62	31.2192	37.84	28.661	28.66	74.013	74.01	229.45	953.87	1165.74	1183.37	17.6	635.91	
Max	907.73	177	726.98	903.38	43.04	162.61	205.55	75.70	92.01	167.51	95.72	95.72	6.69	58.69	65.36	54.64	54.64	106.81	106.81	430.78	1207.32	1456.39	1542.32	85.9	868.06	
Min	529.95	175	347.26	521.77	42.01	38.78	81.75	75.50	25.59	101.09	17.31	17.31	6.45	22.68	29.35	28.66	28.66	55.79	55.79	-4.49	831.25	1005.55	1068.37	-33.4	502.59	

ANNEXURES
&
EXHIBITS

RESERVOIR PARTICULARS OF THE MONTH :

Aug-12

Name of the Reservoirs	FRL	MDDL	Beginning of the month		End of the month	
			Level	Energy content(MU)	Level	Energy content(MU)
KHANDONG	719.3 M	704 M	718.95	21.93	713.25	11.94
KOPILI	609.5 M	592.83 M	609.35	98.20	609.02	98.20
LOKTAK	768.5 M	766.2 M	767.10	34.75	767.47	57.00
BARAPANI	3220 Ft	3150 Ft	3191.18	21.75	3209.11	37.78
GUMTI	93.55 M	83.6 M	88.00	8.60	88.80	11.06
DOYANG	333 M	306 M	319.35	21.50	324.20	36.10

FREQUENCY ANALYSIS FOR THE MONTH OF : Aug-12

Frequency	(Freq.in Hz)	(Time: H:M)	(Date:D.M.Y)
1. Maximum frequency	50.69	08:01	02-Aug-12
2. Minimum frequency	49.05	04:18	05-Aug-12
3. Monthly average	50.00		

Frequency in Hz as %age of time for the blocks :

f < 49.5	49.5 < f < 50.2	f > 50.2
0.73	84.65	14.62

Daily Frequency Variation Index :

DATE	FVI	DATE	FVI
1-Aug-12	0.480	17-Aug-12	0.250
2-Aug-12	0.460	18-Aug-12	0.580
3-Aug-12	0.370	19-Aug-12	0.480
4-Aug-12	0.630	20-Aug-12	0.870
5-Aug-12	0.830	21-Aug-12	0.250
6-Aug-12	0.830	22-Aug-12	0.270
7-Aug-12	0.830	23-Aug-12	0.290
8-Aug-12	0.270	24-Aug-12	0.330
9-Aug-12	0.500	25-Aug-12	0.330
10-Aug-12	1.760	26-Aug-12	0.250
11-Aug-12	0.210	27-Aug-12	0.320
12-Aug-12	0.200	28-Aug-12	0.260
13-Aug-12	0.300	29-Aug-12	0.420
14-Aug-12	0.230	30-Aug-12	0.290
15-Aug-12	0.410	31-Aug-12	0.290
16-Aug-12	0.430	Average FVI	0.459

Annexure-III

Details of Scheduled Bilateral Exchanges within the Region in

Aug-12

Sl.No.	From	To	Energy (At Seller Injn. Point) (MWH)		Energy (At State Periphery) (MWH)
1	Tripura (Baramura-IV)	Manipur	-3534.000000		-3442.839672
2	Tripura (Baramura-IV)	Mizoram	-3534.000000		-3421.942788
3	Tripura (Baramura-V)	Manipur	-3534.000000		-3442.839672
4	Tripura (Baramura-V)	Mizoram	-3534.000000		-3421.942788
5	ASEB	POWERGRID^	265.308100	^ The actual energy consumed by POWERGRID	

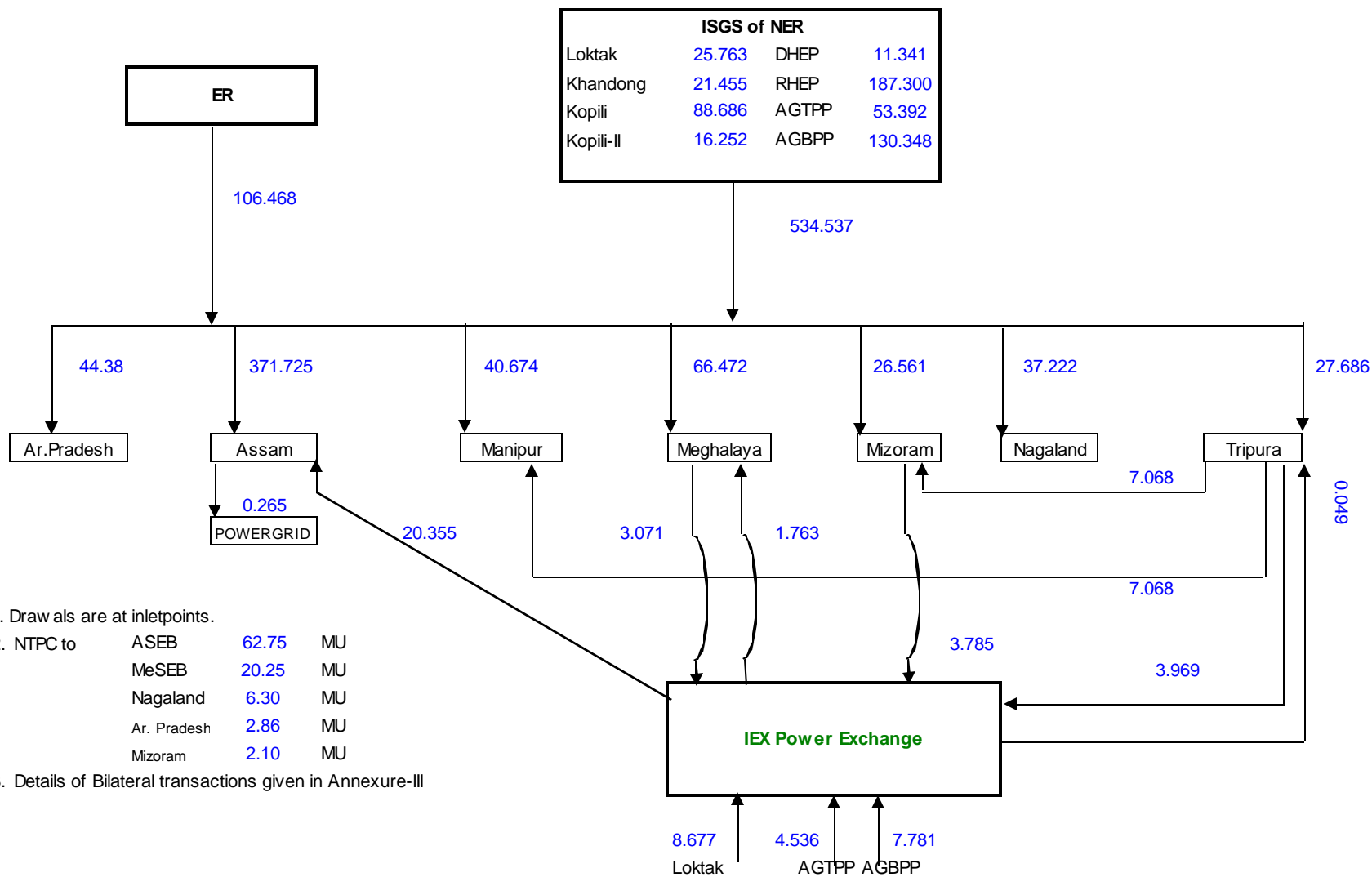
Scheduled Bilateral Exchange with SEBs / Organisations in other Regions

Sl.No.	From	To	Energy (At Seller Periphery) (MWH)	Energy (At NER-ER Periphery) (MWH)	Energy (At Buyer Periphery) (MWH)
1	MeECL	WBSEDCL (NVVN)	-9145.280000	-8985.600000	
2	Nag	Solaris (Nag)	-1386.700000	-1370.312500	
3	Nag	Toyota (Nag)	-1430.400000	-1413.180000	
4	Nag	UPPCL (Nag)	-11578.100000	-11450.000000	
5	TSECL	WBSEDCL (NVVN)	-7519.085000	-7410.275000	
6	J&K	TSECL (NVVN)		230.000000	226.780000
7	Farakka*	Ar. Pradesh	1124.191825	1112.375000	1100.087625
8	Kahalgaon 1*	Ar. Pradesh	805.967900	795.350000	786.382400
9	Talcher*	Ar. Pradesh	931.462000	916.175000	905.518775
10	Farakka*	Assam	11447.199950	11280.725000	11122.306800
11	Kahalgaon 1*	Assam	6873.327400	6748.250000	6652.115150
12	Kahalgaon 2*	Assam	36195.761250	35557.925000	35065.421225
13	Talcher*	Assam	8230.628500	8102.575000	7984.083338
14	Farakka*	MeECL	3496.613525	3438.475000	3379.863113
15	Kahalgaon 1*	MeECL	2482.382350	2431.550000	2389.608188
16	Kahalgaon 2*	MeECL	11445.300000	11244.500000	11054.996413
17	Talcher*	MeECL	2827.307125	2785.475000	2736.364675
18	Farakka*	Nagaland	2519.062600	2478.675000	2443.859800
19	Kahalgaon 1*	Nagaland	1775.081775	1740.950000	1716.168950
20	Talcher*	Nagaland	2007.937875	1976.325000	1947.401488
21	Farakka*	Mizoram	829.976425	809.225000	795.420825
22	Kahalgaon 1*	Mizoram	595.650825	582.575000	572.531988
23	Talcher*	Mizoram	669.686500	656.350000	644.781763

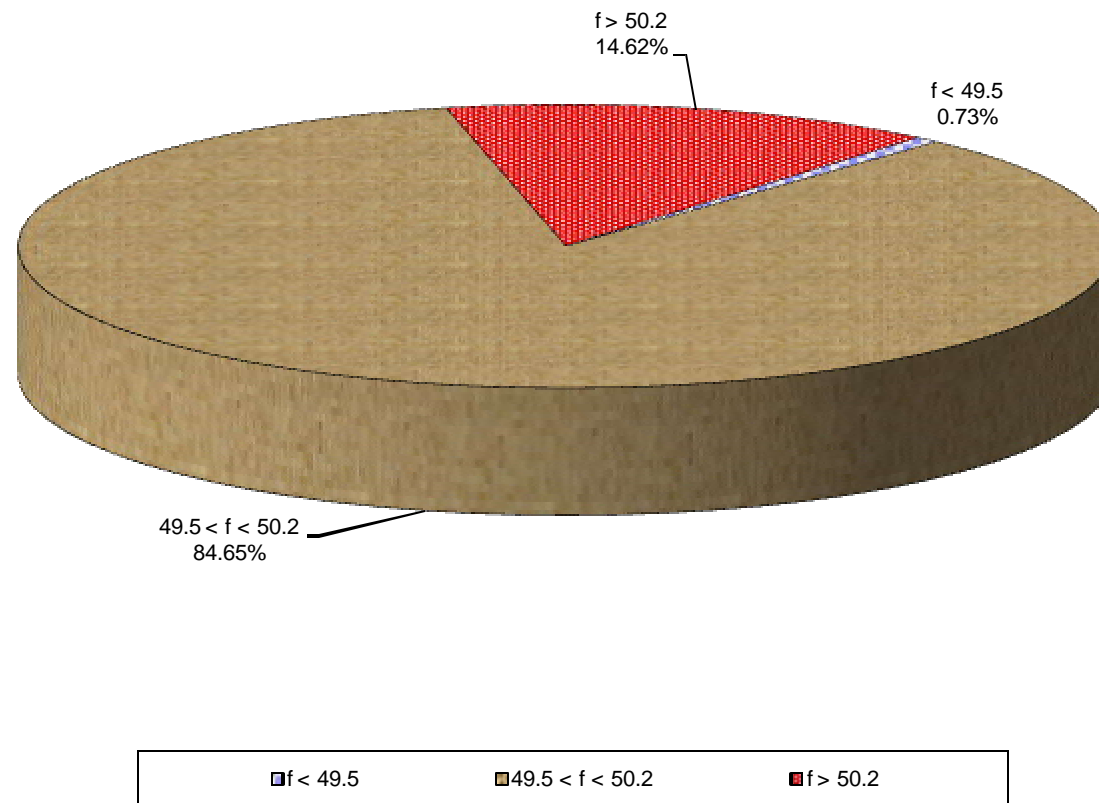
Bilateral exchange through IEX Power Exchange (-ve means injection, +ve means drawal)

24	Assam			20649.997500	20354.747500
25	MeECL		-3071.240000	-3025.755000	
26	MeECL			1796.485000	1763.440000
27	Mizoram		-3784.505000	-3742.222500	
28	Tripura		-3968.770000	-3914.000000	
29	Tripura			50.000000	49.300000
30	NHPC (Loktak)		-8676.660000	-8577.600000	
31	NEEPCO (AGBPP)		-7781.470000	-7669.695000	
32	NEEPCO (AGTPP)		-4535.875000	-4468.430000	

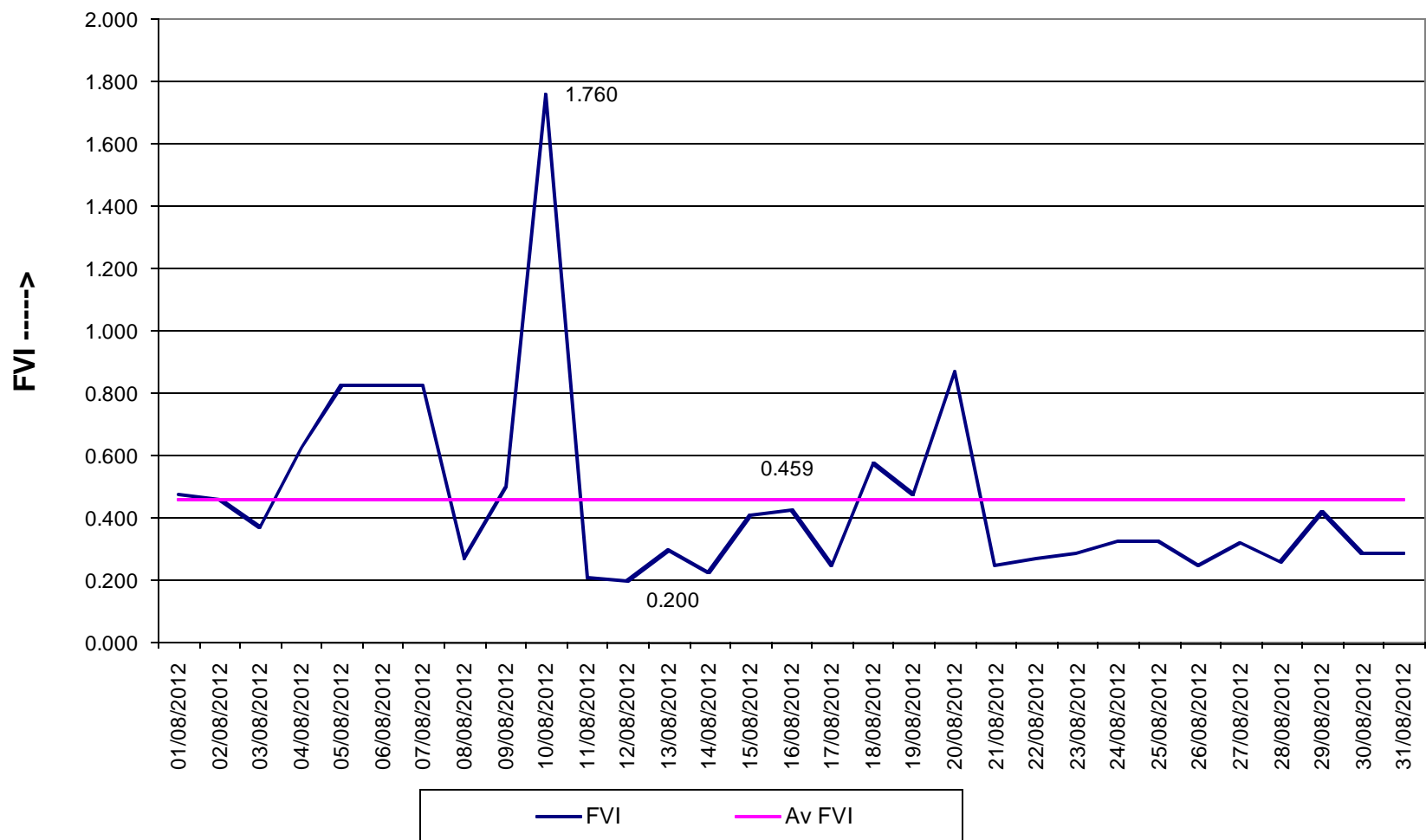
ENERGY EXCHANGE(in MU) IN NER DURINC August, 2012



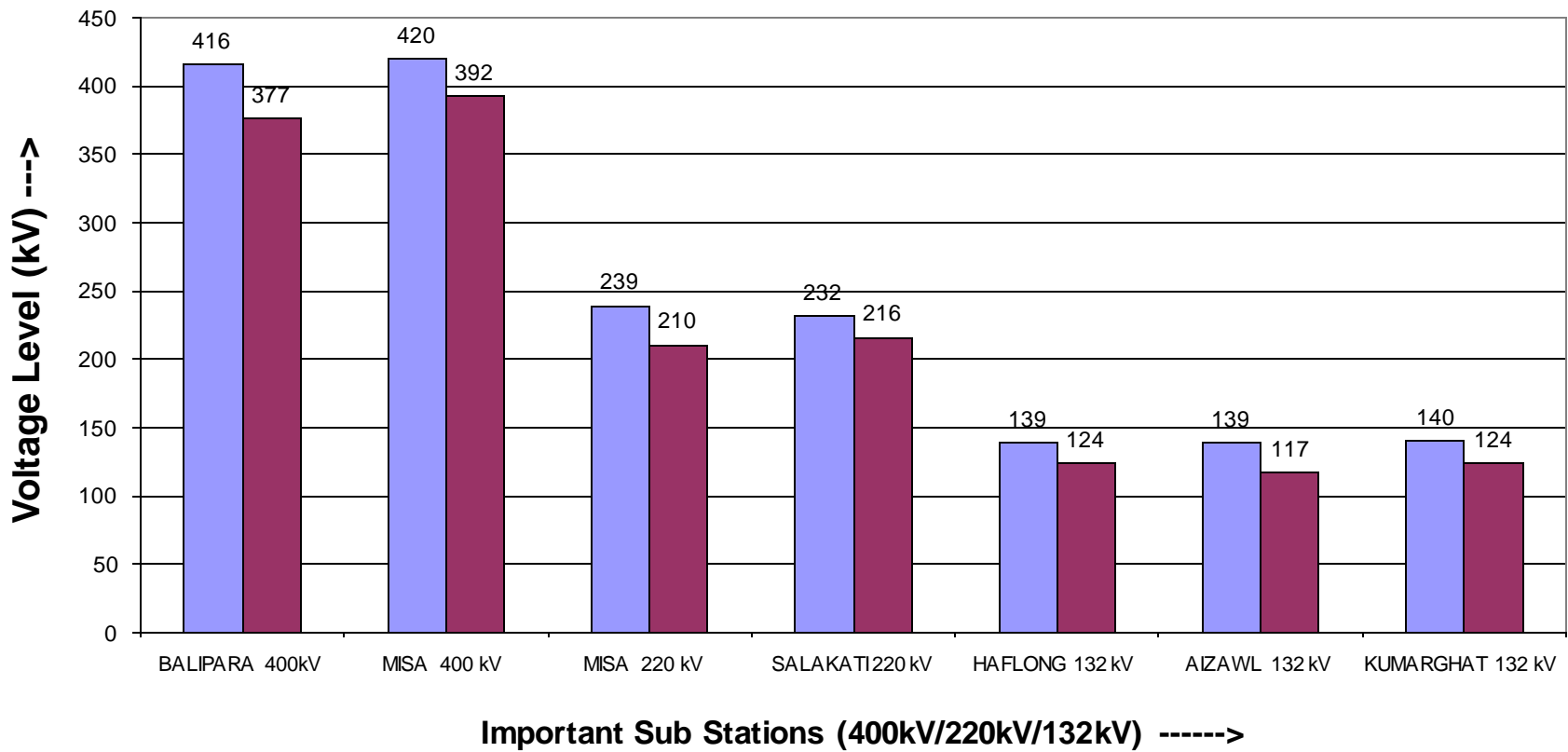
Frequency Duration for August, 2012



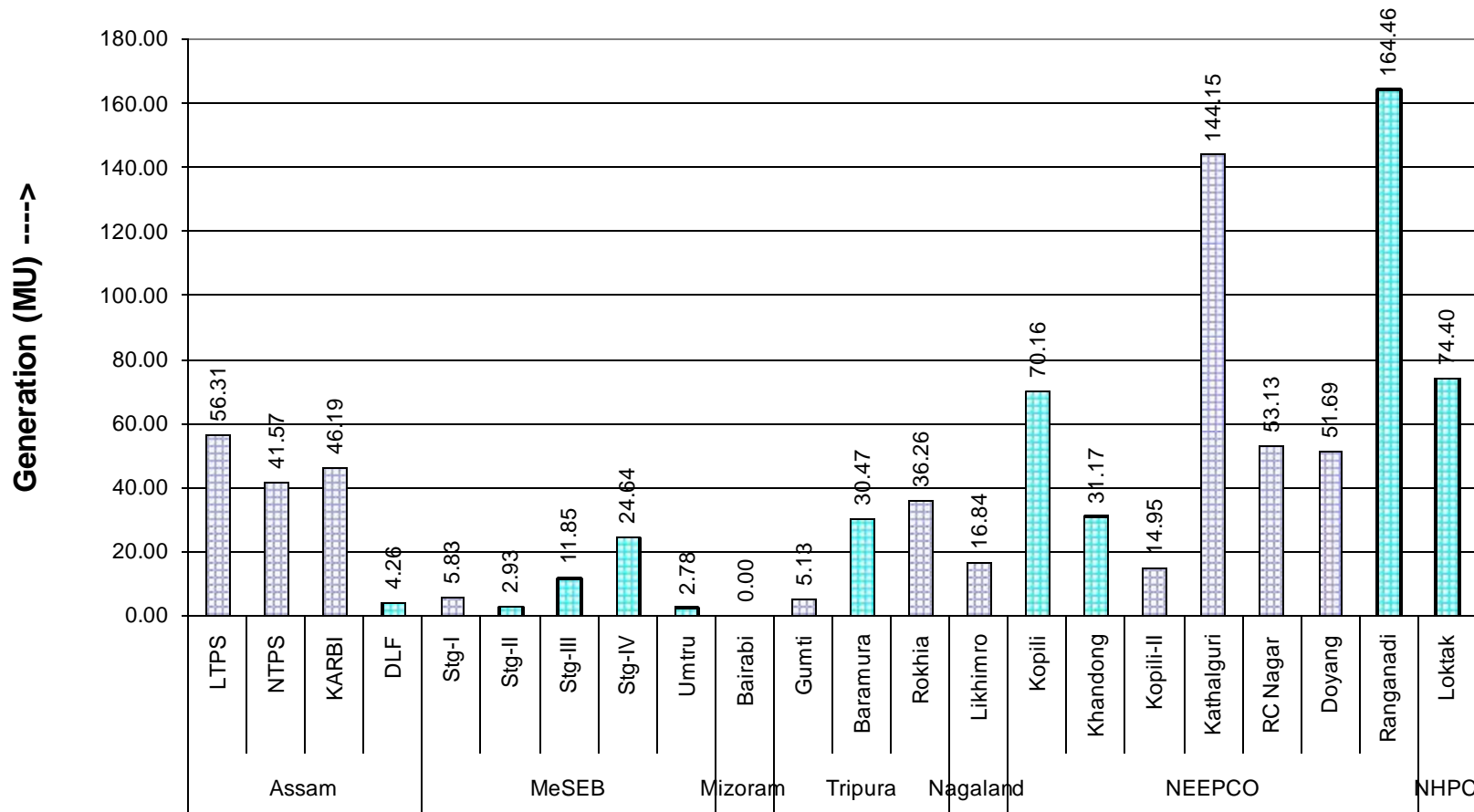
FVI Characteristics for August, 2012



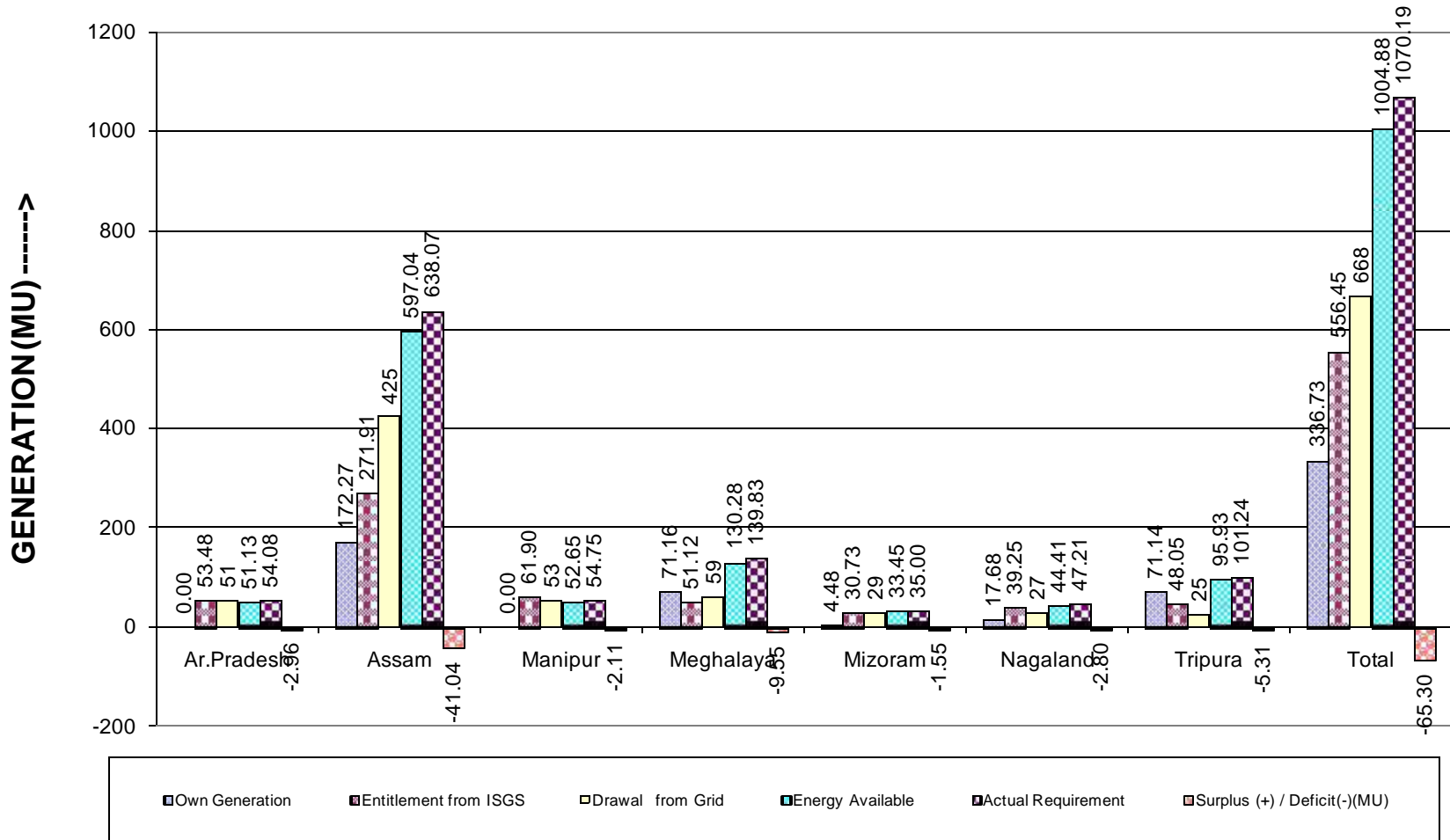
Maximum & Minimum Voltage Levels of Important Substations in NER during August, 2012



State and Central Sector Generation (MU) in NER in August, 2012



NER States Energy Scenario in August, 2012



Reservoir Statistics of NER in August, 2012

