

भारत सरकार Government of India
शक्ति विभाग Ministry of Power
केंद्रीय बिजली प्राधिकार Central Electricity Authority

उत्तर-पूर्व क्षेत्रीय बिजली प्राधिकार
North Eastern Regional Power Committee
शिल्लॉंग Shillong

Progress Report

For the month of

April, 2012

CONTENTS		
Sl. No.	Topics	Page No.
1	Brief Highlights of North Eastern Regional Power System	1
2	Salient Features	2
<u>DETAILS OF THE REPORT</u>		
3	Monthly Power Supply Position:	
	(i) Energy generation in the Region	3
	(ii) Requirement Vs Availability in the Region	3
	(iii) Estimation of Peak Demand (MW)	4
	(iv) Estimation of Energy Requirement (MU)	4
4	Station wise Energy Generation (MU) & Peak Generation (MW):	
	(i) State Sector	5, 6
	(ii) Central Sector	7
5	Plant Load Factor (PLF)	8
6	Voltage Profile of Important Sub-Stations	8
7	(i) Inter Regional Energy Exchange	9
	(ii) Major Grid disturbances	9
	(iii) Meetings held by NERPC	9
8	Status of progress of:	
	(i) Generating Units	10
	(ii) Transmission Lines	11, 12
9	Commercial Status:	
	(i) UI Accounting	13
	(ii) Schedule and CS Share Allocation	14, 15
10	NER Grid Status on (i) Regional Peak Demand day	16
	(ii) Regional Minimum Demand day	17
<u>ANNEXURES</u>		
A-1	Major Reservoir Levels	I
A-2	Frequency Analysis and it's Profile	II
A-3	Scheduled Bilateral Exchanges	III
A-4	Energy Exchanges	IV
<u>EXHIBITS</u>		
B-1	Frequency Profile:	
	(i) Duration of frequency in different ranges	I
	(ii) Frequency Variation Index	II
B-2	Voltage Profile:	
	(i) Voltage Profile of Important Sub-Stations	III
B-3	Energy Generation:	
	(i) Energy Generation by Constituents during the month	IV
	(ii) Energy scenario of State's during the month	V
B-4	Reservoir profile :	
	(i) Reservoir statistics for the month	VI

NORTH EASTERN REGIONAL POWER COMMITTEE

Brief highlights of North Eastern Regional Power System for the month of April, 2012

- ❖ The maximum unrestricted demand during the month of April, 2012 was 1822 MW, which was 1859 MW in the month of March, 2012. The peak demand met in NER during the period under review was 1704 MW, which was 1625 MW last month.
- ❖ The energy requirement during the month of April, 2012 was 837.07 MU, which was 905.64 MU in the month of March, 2012. The energy availability in NER during the period under review was 746.24 MU, which was 818.41 MU last month.
- ❖ The maximum, minimum & average system frequency were 51.62, 49.12 & 49.94 Hz respectively. The maximum, minimum & average FVI were 1.32, 0.035 & 0.435 respectively. The average FVI was less than its previous month's figure. (refer Annex-II).
- ❖ Maximum export of power from NER to ER was 304 MW (on 15/04/12 at 22:49 hrs) and that from ER to NER was 735 MW (01/04/12 at 00:04 hrs). Total net energy import during the month was 246.27 MU (from ER).

**SALIENT FEATURES OF
NORTH EASTERN REGIONAL GRID FOR APRIL, 2012**

1	New unit/ transmission lines/Transformers commissioned during this month	Nil	
2	Number of total grid disturbance during this month	Nil	
		Apr-12	Apr-11
3	Installed Capacity of the Region (in MW)(grid)	2188.82	2054.12
4	Energy Generation in MU (Gross)::		
	Thermal	346.300	216.660
	Hydel	158.018	231.744
	Diesel / Oil	0.000	0.000
	Total	504.318	448.404
5	Demand in MW ::		
	Registered Peak demand	1822.00	1762.00
	Peak demand met	1704.00	1581.00
	Shortage (% age)	-6.48	-10.27
6	Regional Energy(Gross) in MU ::		
	Energy requirement	837.07	826.31
	Energy availability	746.24	748.83
	Surplus (+) / Deficit (-) (% age)	-10.85	-9.38
7	Inter Regional Energy Exchange in MU ::		
	NER ----> ER	0.052	0.269
	ER ----> NER	246.317	152.794
	Net Import	246.265	152.53
8	Frequency profile ::		
	Average frequency (Hz)	49.94	49.79
	Average Frequency Variation Index	0.435	0.795
9	Load Factor (in %)	56.89	59.03

ENERGY GENERATION IN THE REGION FOR THE MONTH OF Apr-12

All figures in MU

Constituents	Hydro		Coal / Oil fired		Gas Based(OpenCycle)		Gas Based(Com Cycle)		Total(gen)	Total(gen)
	Gross	Net	Gross	Net	Gross	Net	Gross	Net	Gross	Net
	A	B	C	D	E	F	G	H	I	J
State Sector :										
Assam	12.579	12.453	0.000	0.000	77.237	76.464	41.995	40.735	131.811	129.653
Meghalaya	33.741	33.404	0.000	0.000	0.000	0.000	0.000	0.000	33.741	33.404
Mizoram	0.000	0.000	0.000	0.000	0.000	0.000	0.000	0.000	0.000	0.000
Tripura	0.000	0.000	0.000	0.000	60.173	59.571	0.000	0.000	60.173	59.571
Nagaland	1.276	1.263	0.000	0.000	0.000	0.000	0.000	0.000	1.276	1.263
Total (State Sector)									227.000	223.890
Central Sector :										
NEEPCO :										
Khd+Kop+Kop-II	22.819	22.591	0.000	0.000	0.000	0.000	0.000	0.000	22.819	22.591
K'guri	0	0	0.000	0.000	0	0	127.613	123.784	127.613	123.784
RCNagar	0	0	0	0	54.024	53.484	0	0	54.024	53.484
Doyang	3.315	3.282	0	0	0	0	0	0	3.315	3.282
Ranganadi	79.921	79.122	0	0	0	0	0	0	79.921	79.122
NHPC :										
Loktak	20.916	20.706	0.000	0.000	0.000	0.000	0.000	0.000	20.916	20.706
Total (Central Sector)									308.607	302.969
Total NER	174.567	172.821	0.000	0.000	191.433	189.519	169.608	164.519	535.608	526.859

REQUIREMENT Vs AVAILABILITY IN THE REGION

STATES	ENERGY requirement (MU) at 50 Hz				POWER requirement (MW) at 50 Hz			
	<i>Availability & L/S at prevailing freq.</i>				<i>Availability & L/S at prevailing freq.</i>			
	Requirt.	Availy.	Shortfall	%Shortfall	Requirt.	Availy.**	Shortfall	%Shortfall
Ar.Pr.	54.81	51.76	3.05	5.57%	106	103	3	2.50%
Assam	450.86	418.07	32.79	7.27%	1053	1019	34	3.21%
Manipur	32.22	29.25	2.97	9.20%	105	104	2	1.64%
M'laya	149.65	108.69	40.96	27.37%	275	269	6	2.30%
Mizoram	28.92	26.63	2.30	7.94%	65	60	5	7.19%
Nagaland	43.33	40.06	3.27	7.54%	100	98	2	1.70%
Tripura	77.28	71.78	5.49	7.11%	180	177	3	1.78%
REGION	837.07	746.24	90.82	10.85%	1822	1704	118	6.48%

ESTIMATION OF PEAK DEMAND (in MW)

Constituents	Peak Demand Met	Date	Freq. (Hz)	Freq. Corr.**	L/S	Estimated Peak demand at 50 Hz
Arunachal Pradesh	103.13	12/04/2012	49.75	0.77	2	105.77
Assam	1018.90	12/04/2012	49.75	7.64	26	1052.64
Manipur	103.55	25/04/2012	49.91	0.28	1	105.28
Meghalaya	269.00	21/04/2012	49.96	0.32	6	275.32
Mizoram	60.29	04/04/2012	50.02	-0.04	5	64.96
Nagaland	98.42	21/04/2012	49.96	0.12	2	100.12
Tripura	177.00	24/04/2012	49.96	0.21	3	180.21
REGION	1704.00	04/04/2012	50.02	-1.02	119	1821.98

** Freq.Correction = Demand met x 0.03 x (50 - Av. Freq.)

ESTIMATION OF ENERGY REQUIREMENT (in MU)

Average Frequency 49.94 Hz

Constituents	Generation	Energy drawal from grid			Over(+) / Under(-) Drawal	Energy Availability*	Freq. Corr.**	L / S	Actual Requirement
		Entitlement frm ISGS of NER	Entitlement frm ISGS of ER	Drawal					
Ar.Pr.	0.000	26.424	4.312	51.760	21.025	51.760	0.093	2.96	54.811
Assam	129.653	142.489	76.758	288.418	69.171	418.071	0.753	32.04	450.864
Manipur	0.000	25.710	0.000	29.252	3.542	29.252	0.053	2.91	32.217
M'laya	33.404	21.579	24.697	75.284	29.008	108.688	0.196	40.77	149.651
Mizoram	0.000	15.884	3.125	26.627	7.618	26.627	0.048	2.25	28.922
Nagaland	1.263	16.562	9.479	38.799	12.758	40.063	0.072	3.19	43.328
Tripura	59.571	25.696	0.000	12.213	-13.483	71.784	0.129	5.36	77.276
REGION	223.890	274.344	118.370	522.354	129.640	746.245	1.343	89.48	837.069

*Energy availability means energy consumed by constituents

** Freq.Correction = Demand met x 0.03 x (50 - Av.Freq.)

ENERGY GENERATED (MU) AND PEAK GENERATION (MW) FROM GENERATING STATIONS/UNITS:

Sl. No.	Power Stations / Units	Installed Capacity(MW)	Peak Generation(MW)	Energy Generation (MU)	
				Apr-12	Apr-11
STATE SECTOR : HYDRO					
ASSAM :: HYDRO					
1	KARBI HEP U - 1	50.00	0.00	0.000	19.150
2	KARBI HEP U - 2	50.00	50.50	12.579	0.520
TOTAL		100.00		12.579	19.670
MEGHALAYA :: HYDRO					
1	STAGE - 1	36.00	27.35	3.076	2.930
2	STAGE - 2	18.00	11.90	1.505	7.680
3	STAGE - 3	60.00	30.79	4.810	8.700
4	STAGE - 4	60.00	30.40	5.196	1.660
5	UMTRU	11.20	12.00	2.606	0.360
TOTAL		185.20		17.192	21.330
NAGALAND :: HYDRO					
6	LIKIMRO - 1				
7	LIKIMRO - 2	24.00	12.00	1.276	2.500
8	LIKIMRO - 3				
TOTAL		24.00		1.276	2.500
TRIPURA :: HYDRO					
9	GUMTI - 1	5.00	Gumti Stn. Peak = 0 MW	0.000	0.000
10	GUMTI - 2	5.00		0.000	0.178
11	GUMTI - 3	5.00		0.000	2.806
TOTAL		15.00		0.000	2.984
TOTAL STATE (HYDRO) :		324.20		31.047	46.484

ENERGY GENERATED (MU) AND PEAK GENERATION (MW) FROM GENERATING STATIONS/UNITS:

Sl. No.	Power Stations / Units	Installed Capacity(MW)	Peak Generation(MW)	Energy Generation (MU)	
				Apr-12	Apr-11
STATE SECTOR : THERMAL/GAS					
MIZORAM ::Thermal					
1	Bairabi	22.92	0.00	0.000	0.000
TRIPURA :: THERMAL					
1	BARAMURA - 1	5.00	Baramura Stn. Peak = 21.5 MW	0.000	0.000
2	BARAMURA - 2	5.00		0.000	0.000
3	BARAMURA - 3	6.50		0.000	0.000
4	BARAMURA - 4	21.00		14.320	12.190
5	BARAMURA - 5	21.00		11.477	14.940
6	ROKHIA - 1	8.00	Rokhia Stn. Peak = 49.4MW	0.000	0.000
7	ROKHIA - 2	8.00		0.000	0.000
8	ROKHIA - 3	8.00		0.000	0.000
9	ROKHIA - 4	8.00		3.867	4.050
10	ROKHIA - 5	8.00		0.000	0.000
11	ROKHIA - 6	8.00		4.310	0.000
12	ROKHIA - 7	21.00		12.897	14.305
13	ROKHIA - 8	21.00		13.303	14.049
	TOTAL	148.50		60.173	59.534
ASSAM :: THERMAL					
1	LTPS - 1	15.00	20.6	0.000	5.230
2	LTPS - 2	15.00	14.8	8.970	7.010
3	LTPS - 3	15.00	0.0	0.000	9.120
4	LTPS - 4	15.00	15.4	8.856	7.650
5	LTPS - 5	20.00	23.64	13.921	11.930
6	LTPS - 6	20.00	22.97	16.161	8.980
7	LTPS - 7	20.00	20.9	9.656	12.500
8	NTPS - 1	20.00	20.5	12.900	10.410
9	NTPS - 2	21.00	21.0	12.890	14.370
10	NTPS - 3	21.00	20.0	5.955	10.450
11	NTPS - 4	11.00	11.0	6.439	6.780
12	NTPS - 5	22.00	0.0	0.000	0.000
13	NTPS - 6	22.00	9.5	3.811	7.140
14	DLF	24.50	6.8	4.932	4.070
	TOTAL	261.50		104.491	115.640
TOTAL STATE THERMAL/GAS :		432.92		164.663	175.174
TOTAL SC GEN(HY+TH/GAS)		757.12		195.710	221.658

ENERGY GENERATED (MU) AND PEAK GENERATION (MW) FROM GENERATING STATIONS/UNITS:

Sl. No.	Power Stations / Units	Installed Capacity(MW)	Peak Generation(MW)	Energy Generation (MU)	
				Apr-12	Apr-11
CENTRAL SECTOR : HYDRO					
1	KHANDONG - 1	25.00	23.54	2.828	4.360
2	KHANDONG - 2	25.00	0.00	0.000	5.210
3	KOPILI Stg - II	25.00	22.65	2.639	3.910
4	KOPILI - 1	50.00	49.44	7.681	0.000
5	KOPILI - 2	50.00	58.41	4.645	21.310
6	KOPILI - 3	50.00	0.00	0.000	29.770
7	KOPILI - 4	50.00	51.30	5.026	25.090
8	DOYANG -1	25.00	20.34	1.402	1.780
9	DOYANG -2	25.00	16.92	0.688	1.410
10	DOYANG -3	25.00	20.71	1.226	1.930
11	LOKTAK - 1	35.00	36.88	6.315	4.730
12	LOKTAK - 2	35.00	36.65	3.898	14.510
13	LOKTAK - 3	35.00	35.79	10.703	20.440
14	RANGANADI - 1	135.00	180.00	26.084	17.160
15	RANGANADI - 2	135.00	135.00	25.817	16.570
16	RANGANADI - 3	135.00	138.00	28.020	17.080
TOTAL HYDRO :		860.00		126.971	185.260
CENTRAL SECTOR : THERMAL/GAS					
1	KATHALGURI - 1	33.50	35.01	19.439	21.750
2	KATHALGURI - 2	33.50	35.54	21.166	21.700
3	KATHALGURI - 3	33.50	33.98	22.614	18.490
4	KATHALGURI - 4	33.50	33.89	2.473	16.340
5	KATHALGURI - 5	33.50	33.01	22.367	21.210
6	KATHALGURI - 6	33.50	33.39	17.587	21.760
7	KATHALGURI - 7	30.00	0.00	0.000	15.370
8	KATHALGURI - 8	30.00	24.43	6.733	8.150
9	KATHALGURI - 9	30.00	26.75	15.233	16.710
10	R.C.NAGAR - 1	21.00	30.00	13.428	14.350
11	R.C.NAGAR - 2	21.00	22.08	13.571	13.690
12	R.C.NAGAR - 3	21.00	21.89	13.512	13.520
13	R.C.NAGAR - 4	21.00	21.00	13.513	13.620
TOTAL THERMAL/GAS :		375.00		181.637	216.660
TOTAL CS (HY + TH/GAS) :		1235.000		308.607	401.920
TOTAL NER GEN(HY+TH/GAS) :		1992.120		504.318	623.578

Plant Load Factor (PLF) and Voltage Profile :

Apr-12

PLANT LOAD FACTOR OF THE THERMAL/ GAS STATIONS IN NER

Sl. No.	Power Station	State/ Constituent	Installed Capacity (MW)	Generation (in MU)	Stationwise PLF (%)
1	LTPS*	AEGCL	120.00	57.564	66.63
2	NTPS*	AEGCL	117.00	41.995	49.85
3	Baramura	Tripura	58.50	25.796	61.25
4	Rokhia	Tripura	90.00	34.376	53.05
5	AGBPP	NEEPCO	291.00	127.613	60.91
6	AGTPP	NEEPCO	84.00	54.024	89.33

*LTPS-- Lakwa Thermal Power Station, NTPS-- Namrup Thermal Power Station

VOLTAGE PROFILE :

A. MAXIMUM AND MINIMUM VOLTAGE (kV) OF IMPORTANT SUB - STATIONS :

Sl. No.	NAME OF S/S	MAXIMUM (kV)	MINIMUM (kV)
1	BALIPARA 400 kV	424	381
2	MISA 400 kV	427	377
3	MISA 220 kV	233	206
4	SALAKATI 220 kV	238	217
5	HAFLONG 132 kV	145	119
6	AIZAWL 132kV	139	116
7	KUMARGHAT 132kV	139	123

Voltage Range in kV as percentage of time for the block

SUB-STATION	kV < 360	360<kV<380	380<kV<420	kV>420
MISA	0.00	0.02	97.59	2.39
BALIPARA	0.00	0.00	100.00	0.00

1 **INTER - REGIONAL EXCHANGE :**

All Fig in MU

NER to ER	0.052
ER to NER	246.317
NET IMPORT	246.265

2 **Major Grid Disturbances during this month**

Nil

3 **MEETING HELD BY NERPC DURING THIS MONTH**

1. 72nd OCC Meeting was held on 10.04.12 at Guwahati.

PROGRESS OF GENERATION PROJECTS IN NER				
Name of the Generation Scheme	No. of Units	Capacity (MW)	Commissioning Schedule	REMARKS
[A] NEEPCO				
1. Monarchak TGBPP		104	2013	Activities in progress
2. Tuirial HEP Mizoram	2	2 X 30	WORKS HELD-UP	Being reviewed by PIB
3. Kameng HEP A. Pradesh	4	4X150	2014	Activities in progress
4. Tuival H.E. Proj. Mizoram	3	3X70	2015	Status not available
5. Tipaimukh HEP		1500	2015	Activities in progress
6. Mawphu HEP	2	90	2015	UNDER CCEA
7. Pare HEP, Ar. Pradesh		110	2015	UNDER CCEA
[B] NHPC				
a). Loktak Downstream HEP	2	66	2014	Activities in progress
b) Subansiri Lower HEP		2000	2013	Activities in progress
c) Siang Middle HEP		2000	2016	Activities in progress
d) Subansiri Upper HEP		2000	DPR Under prep	
e) Subansiri Middle HEP		1000	DPR Under prep	
f) Dibang Multipurpose Project		3000	Under TEC	
[C] NTPC				
a). Bongaigaon TPS	3	3X250	2012	Activities in progress
[D] JV PROJECT				
a). Palatana CCPP	2	2X323.3	2012	Activities in progress
[E] ASSAM				
(a) Lakwa WHRP		37.2	2012	Activities in progress
(b) Namrup CCPP	2	2X40	2014	
[F] MIZORAM				
(a) Tuivai Hydrel Project	2	51	2015	Activities in progress
(b) Bairabi Dam Project	2	2 X 40	2015	Activities in progress
(G) MeECL				
(a) Myntdu - Leishka HEP	2+1	3x42	2011-12	Activities in progress
(b) New Umtru HEP	2	2X20	2013	Activities in progress

PROGRESS OF TRANSMISSION LINES IN NE REGION									
	Name of the line	Length	Comm'n'g Sch		Total no.	Stubs com -	Tower	Stringing	Remarks
		(ckt kms)	Ann.pl	Ant/revd	of locs .	pleted(nos)	Erected	complt-ckm	
A : Lines under ASEB:									
1	LILO of 400 kV D/C Ranganadi-Balipara at Kukurmara	20	Jul-13		20				Deposit work to PGCIL
2	220 kV, D/C Bongaigaon TPS (NTPC) -Rangia	360	Dec-13		479	6			Design apprvd, prototype test
3	220 kV, S/C BTPS(AEGCL) - Agia-Sarusajai-II	198	Mar-12		601	601	0		
4	220 kV S/C (on D/C) Namrup TPS-Mariani	141	May-13						Contract awarded
5	LILO of 220 kV D/C Agia-Sarusajai at Kukurmara	4	Feb-12		8	4			Work in progress
6	132 kV D/C BTPS - Kokrajhar	18	Dec-12	Aug-12	75				Work order placed
7	132 kV D/C Kokrajhar-Bilashipara-Gauripur	70	Oct-13	Dec-13	121				
8	132 kV D/C Kukurmara-Azara	6	Dec-12	May-12	28				Contract awarded
9	132 kV D/C Kukurmara- Boko	25	May-13						Row Problem
B : Lines under MeECL :									
1	LILO of 400kV D/C Silchar - Bongaigaon at Killing (Byt	9	Dec-12		1				Evaluation of tender in progress
2	132 kV S/C New Umtru HEP-Norbong (EPIP II)	3	Mar-12						
3	132 kV D/C Killing(Byrmihat)-EPIP I	17	Mar-12						Work in progress
4	132 kV D/C Mawngap - Sumer	66	Dec-11	Dec-12	102	102	102	66	
5	132 kV D/C Rongkhon - Ampati	33	Mar-12	Mar-13	103				Work in progress
6	132 kV S/C Nangalbibra - Agia	92	Mar-12		316	316	316	91	Work in progress
7	LILO of 132 kV S/C Agia-Nangalbibra at Mendipathar	5	Mar-12	Jun-12	9	9	5	0	
8	LILO of 132 kV D/C Mawlai-Cherrapunjee at Mawngap	5	Dec-11	Dec-12	15	10	5	0	
9	LILO of 132 kV D/C Mawlai-nangalbibra at Mawngap	3	Mar-12		13				Work in progress
C : Lines under Mizoram :									
1	LILO of 132 kV S/C Zemabak - W. Phaileng at Sinh	5	Dec-11						
D : Lines under TSECL :									
1	400 kV D/C Purba kanchan Bari- Surajmani Nagar	260	Mar-12						Fund not yet tied up.
2	132 kV D/C Surjyamani Nagar - 79 Tilla (Agartala)	36	Mar-12		41	18			Work in progress
3	132 kV D/C Surjyamani Nagar - Badarghat	6	Mar-12						Fund not yet tied up.
4	132 kV D/C Surjyamani Nagar - Budhjangnagar	36	Apr-12		63	25			ROW problem
5	132 kV D/C Surjyamani Nagar - Rokhia	35	Mar-12						Fund not yet tied up.
6	132 kV D/C Surjyamani Nagar - Udaipur	50	Mar-12						Fund not yet tied up.
E : Lines under NETC :									
1	400 kV D/C Palatana - Silchar	492	Feb-12		676	658	609	254	Forest clearance awaited
2	400 kV D/C Bongaigaon- Silchar	830	Jun-12	Jun-12	1125	890	734	234	Forest clearance awaited

	Name of the line	Length (ckt kms)	Comm'ing Sch		Total no. of locs.	Stubs com - pleted(nos)	Tower Erected	Stringing complt-ckm	Remarks
			Ann.pl	Ant/revd					
F : POWERGRID Lines:									
1	+/- 800kv HVDC Bipole Biswanath Chariyali - Agra	1971	Aug-13	Sep-14	4228	3131	2673	432	Matching with HVDC Converter
2	400kV Balipara - Biswanath Chariyali D/C	130	Aug-13	Aug-13	167	140	131	66	Matching with L. Subansiri
3	LILO of 400 kv Ranganadhi Balipara D/C at Biswanath	54	Aug-13	Aug-13	76	70	54	19	Matching with Gen. of L.Subansi
4	132 kV D/C B. Chariyali-B. Chariyali (AEGCL)	32	Aug-13	Aug-13	55	21	2		
5	400 kV Kameng-Balipara D/C	110	Feb-13	Mar-14	142	56	8		Matching with Gen. of Kameng
6	400kV Balipara- Bongaigaon D/C line	596	Feb-13	Feb-13	837	751	632	183	Matching with Gen. of Kameng
7	400kV Lower Subansari-Biswanath Charrali line-I	334	Feb-13	Dec-13	432	301	218	51	Matching with Gen. Project
8	400kV Lower Subansari-Biswanath Charrali Line-II	340	Feb-13	Feb-13	442	316	196	35	Matching with Gen. Project
9	132 kV Kopili- Khandong-II	12	Sep-09		43	37	24	8	Forest clearance awaited
10	400 kV D/C Bongaigaon TPS-Bongaigaon line	6	Mar-12		11	8	4	0	
11	400kV D/C Pallatana- Surajmani –nagar line	70	Dec-11	Jun-12	118	111	99	27	Compl. of Suraj-maninagar by TSECL
12	400kV D/C Silchar-Purba Kanchan Bari line	244	Mar-12	Jun-12	373	291	158	38	ROW problem
13	400kV D/C Silchar-Melriat(New) line	320	Dec-12	Mar-13	447	132	82	32	1 st Stg Forest clearance awaited
14	400kV D/C Silchar-Imphal(New) line	280	Dec-12	Jun-12	490	82	6	0	Likely to be delayed
15	220kV D/C Mariani(New)-Mokikchung(PG)	112	Dec-12	Mar-13	160	34	4	0	Efforts to be made to match U#2 of Palatana GBPP
16	132kV Silchar-Badarpur(PG) SW Interconnecting line	42	Nov-11		69	68	64	28	To match with U#1 of Palatana
17	132kV D/C Melriat(New)- Melriat (Mizo) Interconnecting line	60	Dec-12	Mar-13	85				Melriat S/s by Mizoram
18	132kV D/C Silchar-Srikona (AEGCL) line	6	Dec-11		10	7	7	2	Award Placed
19	132kV D/C Silchar-Hailakandi (AEGCL) line	50	Dec-11		86	60	52	18	Completion matching with S/S
20	132kV D/C Mokikchung(PG)- Mokikchung(Naga) line	2	Dec-12	Mar-13	4				Efforts to be made to match U#2 of Palatana GBPP
21	132 kV S/C Pasighat-Roing line (on D/C)	70	Dec-12	Mar-13	550	124	39	0	Completion matching with S/S.
22	132 kV S/C Roing-Tezu line (on D/C)	60	Dec-12	Mar-13					Engg. in progress
23	132 kV S/C Tezu-Namsai line (on D/C)	90	Dec-12		180	8			Completion matching with S/S.
24	LILO of 400kV S/C Kathalguri -Misa line at Mariani(New)	2	Dec-12		20				
25	LILO of 132 kV S/C Loktak-Imphal line at Imphal (New)	60	Dec-12		150				
26	220 kV D/C Bongaigaon TPS (NTPC-Bongaigaon)	15	Dec-12		11	10	8	2	

UI Receivable/ Payable for the month of**Apr-12**

Organisation	Actual (MU)	Schedule (MU)	UI Energy (MU)	UI Receivable (Rs. in Lakhs)	UI Payable (Rs. in Lakhs)
Arunachal Pradesh	51.760	37.371	14.389	7.551	356.888
ASEB	288.418	296.865	-8.447	476.217	374.017
Manipur	29.252	31.234	-1.982	61.079	38.353
MeSEB	75.284	54.938	20.347	18.424	510.146
Mizoram	26.627	21.296	5.331	1.624	134.771
Nagaland	38.799	25.771	13.028	0.000	344.304
Tripura	12.213	23.319	-11.105	260.033	64.464

Entitlement, Schedule, Drawal and UI Charges**Apr-12**

Name of beneficiaries	Entit. from scheduled energy from ISGS in NER (Ex-PP State)	Entit. from scheduled energy from ISGS in ER (Ex-PP State)	Total Entitlement (Ex-PP State) (in MU)	Schedule (Ex-PP State) (in MU)	Actual Drawal from Grid (MU)	Over Drawal (+) / Under Drawal (-) (MU)	UI Payable (-)/ Receivable (+) (Rs. In Cr)
Arunachal Pradesh	26.424	4.312	30.735	37.371	51.760	14.389	-3.493
ASEB	142.489	76.758	219.247	296.865	288.418	-8.447	1.022
Manipur	25.710	0.000	25.710	31.234	29.252	-1.982	0.227
MeSEB	21.579	24.697	46.276	54.938	75.284	20.347	-4.917
Mizoram	15.884	3.125	19.009	21.296	26.627	5.331	-1.331
Nagaland	16.562	9.479	26.041	25.771	38.799	13.028	-3.443
Tripura	25.696	0.000	25.696	23.319	12.213	-11.105	1.956

(Source : UI A/c, NERPC)

* In addition to total entitlement, bilateral exchanges and purchase/sell through traders/exchange are covered in Annexure-III

Schedule for ISGS's Generation and State's Drawl for the month of

Apr-12

States	Schedule From ISGS(MWH)	Bilateral Schedule from Outside NER (MWH)	Total Schedule (MWH)	Ex.PP. Drawal (MWH)	Tr. Energy (MWH)
Arunachal Pradesh	26684.46	4370.30	31054.76	53431.19	53431.19
ASEB	144772.44	78028.40	222800.84	297729.32	297729.32
Manipur	25968.96		25968.96	30196.28	30196.28
MeSEB	21761.89	25179.88	46941.76	77714.87	77714.87
Mizoram	16081.56		16081.56	27486.87	27486.87
Nagaland	16834.78	9635.75	26470.53	40052.02	40052.02
Tripura	25641.50		25641.50	12607.59	25641.50
Total	277745.58	117214.33	394959.91	539218.13	552252.04

ISGS	Schedule (MWH)	Injection (MWH)
LOKTAK	10165.68	12978.31
KHANDONG	2811.70	1143.84
KOPILI-I	17454.60	21048.88
KOPILI-II	2561.20	3400.45
DHEP	3030.38	3843.46
RHEP	78532.89	29991.19
AGTPP	47567.44	56453.22
AGBPP	115621.69	141640.83
Total	277745.58	270500.17

Source : Provisional REA for the month: Apr-12

Cumulative wt. Average Share Allocation (%) (Up to this month) in CS Stations

States	KOPILI	KOPILI-II	KHANDONG	RHEP	DHEP	AGBPP	AGTPP	Loktak HEP
	(200 MW)	(25 MW)	(50 MW)	(405 MW)	(75 MW)	(291 MW)	(84 MW)	(90 MW)
Arunachal Pradesh	5.191	5.992	4.194	18.462	6.852	5.694	6.132	4.940
Assam	53.455	52.355	56.285	43.328	43.808	56.503	45.585	29.445
Manipur	7.395	6.945	6.555	8.373	7.865	8.105	8.313	30.115
Meghalaya	17.395	13.675	16.905	11.505	11.455	11.815	11.813	12.393
Mizoram	4.610	6.040	3.940	5.700	5.250	5.410	5.980	5.020
Nagaland	6.147	5.735	6.653	5.335	17.967	5.805	5.377	6.435
Tripura	5.807	9.258	5.468	7.297	6.803	6.668	16.800	11.652
Total	100.00	100.00	100.00	100.00	100.00	100.00	100.00	100.00

Details of Fixed and Energy Charges of CS Stations for FY 2011-12

Projects	Installed Capacity (MW)	Design Energy (GWh)	Annual Fixed Charge (Rs. Crore)	Reference
KOPILI HEP	200	1186.14*	81.2979 *	*As per CERC order dated 30.09.2011 in petition No 294/2009.
KOPILI -II	25	86.3*	13.3856 **	* Provisional, ** As per CERC order dated 01.01.08 in pet. No 70/2006
KHANDONG HEP	50	277.61*	44.7731 *	*As per CERC order dated 30.09.2011 in petition No 297/2009.
RHEP*	405	1509.69	291.3941	*As per CERC order dated 10.05.2011 in petition No.296/2009.
DHEP	75	227.24	58.5 *	*As per CERC order dated 03.10.07 in petition No 88/2007.
AGBPP	291	NA	238.82 *	As per CERC order dated 6.9.2011 in Pet.No295 / 2009
AGTPP	84	NA	69.8278 *	Base Rate of energy Charge as per the CERC Order
LOKTAK HEP	105	448.00	101.2114 *	*As per CERC order dated 11.03.11 in Pet.No 299/2009,^Base Engy. charge as per CERC order
				*As per CERC order dated 14.06.11 in Pet.No 108/2010

HOURLY DATA ON PEAK DEMAND MET DAY

DATE:- 04.04.2012

All figures in MW

HRS.	Total ISGS Injection (MW)	STATE SECTOR													ER					Total Drawal by States
		ASEB			MeSEB			Tripura			Manipur	Mizoram	Nagaland	ArPr		Total N.E.R GEN	Total Demand Met	Gross Demand met	Actual Loss	
		GEN	Drawal	Demand Met	GEN	Demand Met	Drawal	GEN	Demand Met	Drawal	DM	DM	DM	DM						
1	251.32	157	403.52	560.7	24	166.1	190.09	96	37.0	133.48	23.88	34.42	57.46	75.34	573.12	528.97	954.96	981.59	26.6	224.69
2	259.35	156	408.53	564.8	0	110.2	110.15	97	33.2	129.70	21.33	32.69	55.28	37.83	457.72	512.19	855.28	873.32	18.0	241.31
3	255.87	157	416.73	573.5	0	115.7	115.71	96	27.8	124.17	20.35	30.90	56.04	62.38	496.32	509.04	886.69	908.93	22.2	233.63
4	259.90	157	422.31	578.9	0	119.7	119.72	97	24.2	120.79	17.94	30.36	57.34	60.73	501.97	513.00	889.22	918.38	29.2	230.74
5	260.67	157	421.63	578.5	0	85.5	85.46	96	22.4	118.69	14.82	36.00	62.63	66.38	478.03	513.88	866.19	895.54	29.3	231.32
6	260.37	157	417.85	574.8	0	138.7	138.73	96	14.6	110.84	37.93	33.51	59.14	76.82	544.96	513.53	935.49	962.19	26.7	233.66
7	263.67	162	374.13	535.9	0	150.1	150.10	96	14.3	110.73	40.26	56.53	69.02	78.48	548.09	521.84	944.59	973.46	28.9	234.80
8	252.01	157	234.67	391.7	24	61.4	85.52	97	21.9	118.48	40.05	55.44	61.95	78.94	330.41	529.72	711.41	739.40	28.0	224.02
9	253.56	156	338.04	494.3	0	116.2	116.20	96	20.1	116.55	36.72	45.09	54.97	67.92	453.01	506.24	835.29	862.76	27.5	226.09
10	249.98	155	301.38	456.9	24	63.3	87.38	96	13.2	109.46	38.18	43.11	49.30	65.31	364.40	525.74	729.30	769.80	40.5	209.48
11	220.62	151	229.33	380.0	24	78.9	102.89	95	50.4	145.47	7.37	3.69	45.22	54.14	278.37	490.40	619.72	649.63	29.9	190.71
12	222.17	135	273.13	407.9	24	80.6	104.54	74	64.6	139.05	37.78	22.80	26.06	52.19	351.41	455.38	691.86	708.29	16.4	205.74
13	239.92	140	269.37	409.4	24	106.9	131.13	56	63.3	119.02	21.98	29.04	19.05	64.45	367.67	459.96	714.01	747.55	33.5	206.39
14	242.97	123	317.24	439.8	24	104.8	129.02	74	35.7	110.06	12.24	29.98	33.16	64.01	376.62	464.19	719.63	742.11	22.5	220.49
15	247.95	116	361.33	477.0	0	105.1	105.15	89	40.0	129.20	17.20	34.21	36.83	60.96	431.00	452.84	771.39	794.60	23.2	224.75
16	248.81	113	421.89	535.0	0	116.9	116.92	88	39.2	126.88	19.31	42.13	39.88	63.33	515.23	449.62	855.73	877.08	21.4	227.46
17	299.80	109	384.95	493.5	0	146.2	146.18	87	38.9	126.26	19.54	42.71	56.39	73.15	497.69	495.70	870.36	905.92	35.6	264.24
18	543.52	120	569.40	689.9	0	145.7	145.66	87	77.9	165.39	43.08	54.76	20.32	95.63	538.54	751.46	1127.25	1202.43	75.2	468.34
19	801.24	173	588.71	762.1	0	153.5	153.50	91	69.3	160.45	67.36	53.99	68.20	85.19	350.14	1065.84	1259.63	1324.69	65.1	736.18
20	790.36	174	611.49	785.7	36	158.8	195.17	94	52.5	146.68	63.78	63.07	74.32	97.20	338.98	1095.14	1295.30	1303.42	8.1	782.25
21	511.81	187	573.90	761.4	36	156.7	192.84	95	75.5	170.18	67.92	58.08	78.05	87.11	624.31	830.08	1284.73	1323.47	38.7	473.07
22	490.30	187	506.72	693.5	36	140.2	176.39	95	50.2	145.06	67.92	53.37	64.53	85.12	498.64	808.11	1154.76	1175.55	20.8	469.50
23	313.98	189	437.85	626.9	43	107.6	150.15	95	41.6	136.49	50.18	44.90	58.62	71.37	533.24	640.59	1001.12	1036.25	35.1	278.85
24	301.08	148	374.52	522.4	46	107.5	153.65	94	45.8	140.33	46.00	38.07	43.73	65.07	454.09	589.67	868.63	903.04	34.4	266.67
Max	801.24	189	611.49	785.67	46	166.1	195.17	97	77.9	170.18	67.92	63.07	78.05	97.20	624.31	1095.14	1295.30	1324.69	75.2	782.25
Min	220.62	109	229.33	380.03	0	61.4	85.46	56	13.2	109.46	7.37	3.69	19.05	37.83	278.37	449.62	619.72	649.63	8.1	190.71

HOURLY DATA ON **MINIMUM DEMAND MET DAY**

DATE: 16.04.2012

All figures in MW

HRS.	Total ISGS Injection (MW)	STATE SECTOR													ER	Total N.E.R GEN	Total Demand Met	Gross Demand met = Sum of demand met of all the states+loss	Actual Loss	Total Drawal by States
		ASEB			MeSEB			Tripura			Manipur	Mizoram	Nagaland	ArPr						
		GEN	Demand Met	Drawal	GEN	Demand Met	Drawal	GEN	drawal	Demand Met	DM	DM	DM	DM						
1	231.36	143	55.9	199.06	24	78.5	102.81	21	-11.96	8.83	2.37	20.55	31.61	60.78	28.27	419.6	258.6	280.38	21.8	209.55
2	235.33	144	45.4	189.52	24	78.3	102.54	21	-11.24	9.58	2.91	21.36	31.11	59.95	6.60	424.6	248.5	262.71	14.2	221.16
3	233.75	143	37.1	180.43	0	77.9	77.89	21	-13.83	6.90	1.63	21.59	30.66	58.78	-3.15	397.8	234.5	251.29	16.7	217.01
4	235.59	145	41.5	186.62	0	74.2	74.19	21	-10.78	9.92	4.37	21.04	30.14	59.72	-2.60	401.4	240.9	253.65	12.8	222.80
5	220.94	144	50.1	193.70	0	69.4	69.44	16	26.17	41.90	1.61	22.19	36.92	62.83	64.09	380.3	285.0	300.71	15.7	205.20
6	273.60	140	64.5	204.75	0	69.4	69.44	8	-6.46	1.48	2.57	23.96	49.22	67.62	38.62	421.8	278.8	287.31	8.5	265.09
7	313.13	150	86.6	236.95	23	62.3	85.60	15	-5.16	9.46	3.82	37.54	47.23	63.06	6.78	501.5	309.9	334.51	24.6	288.56
8	350.68	150	107.3	257.81	23	89.4	112.74	25	-21.32	3.68	5.28	38.36	42.44	66.86	-12.54	549.5	353.3	363.10	9.8	340.91
9	357.68	198	125.2	323.33	0	95.1	95.14	21	-20.42	0.53	5.80	30.46	42.66	64.77	-10.52	576.8	364.5	368.07	3.5	354.14
10	246.02	130	170.8	300.30	39	87.5	126.13	21	-15.44	5.48	4.04	28.07	31.91	61.84	135.48	435.1	389.6	402.38	12.8	233.27
11	244.75	124	244.5	368.65	56	78.8	134.99	75	-7.03	67.60	4.59	30.99	35.48	47.65	203.87	499.8	509.5	523.22	13.7	231.07
12	263.59	118	284.9	403.19	42	66.0	108.30	75	-0.48	74.06	16.21	35.48	42.57	59.00	246.46	498.7	578.2	584.55	6.3	257.27
13	257.03	119	315.5	434.75	36	82.3	118.78	74	4.90	79.34	10.71	33.03	36.09	58.61	297.34	487.2	615.6	628.78	13.2	243.86
14	258.52	118	333.1	451.52	37	57.3	93.79	74	16.26	90.65	20.22	31.81	48.07	58.29	315.80	487.9	639.4	648.67	9.3	249.23
15	255.38	120	340.3	460.08	8	70.9	79.29	74	18.00	92.23	28.28	37.74	52.19	48.13	359.47	457.7	669.9	689.05	19.2	236.19
16	384.00	121	373.8	494.82	8	91.4	99.74	74	22.12	96.41	26.86	45.95	53.87	60.84	350.40	587.6	749.2	808.65	59.5	324.50
17	632.30	121	390.4	511.65	38	111.5	149.61	74	31.82	106.00	30.17	47.94	57.76	72.63	141.12	865.9	816.4	847.52	31.2	601.15
18	809.66	132	524.4	656.51	32	132.8	164.64	74	62.56	136.86	54.82	54.36	73.85	96.08	178.88	1047.9	1073.2	1062.76	-10.4	820.05
19	900.66	179	670.7	849.63	24	127.6	152.10	75	94.28	168.79	67.35	54.55	66.22	108.93	321.66	1178.5	1264.2	1296.75	32.6	868.11
20	947.23	184	687.7	871.78	17	122.9	139.50	75	88.40	162.90	72.18	55.83	67.22	92.20	273.70	1222.4	1260.9	1295.36	34.4	912.79
21	849.90	186	659.2	845.23	16	140.1	156.57	75	81.28	155.85	70.27	51.22	71.43	88.22	348.45	1126.9	1236.3	1272.84	36.5	813.41
22	745.05	173	606.6	779.48	36	133.4	169.09	75	67.13	141.79	75.58	46.22	60.84	79.47	355.42	1028.3	1143.9	1175.05	31.2	713.90
23	580.55	179	493.2	672.09	36	118.5	154.19	75	59.90	134.72	60.33	36.36	49.34	66.35	308.58	870.0	958.8	963.91	5.1	575.43
24	394.64	179	354.4	533.51	36	106.2	141.98	75	50.65	125.52	53.32	29.74	50.85	76.55	340.80	684.4	796.6	810.28	13.7	380.97
Max	947.23	198	687.7	871.78	56	140.1	169.09	75	94.28	168.79	75.58	55.83	73.85	108.93	359.47	1222.4	1264.2	1296.75	59.5	912.79
Min	220.94	118	37.1	180.43	0	57.3	69.44	8	-21.32	0.53	1.61	20.55	30.14	47.65	-12.54	380.3	234.5	251.29	-10.4	205.20

ANNEXURES
&
EXHIBITS

RESERVOIR PARTICULARS OF THE MONTH :

Apr-12

Name of the Reservoirs	FRL	MDDL	Beginning of the month		End of the month	
			Level	Energy content(MU)	Level	Energy content(MU)
KHANDONG	719.3 M	704 M	710.90	8.03	710.00	6.07
KOPILI	609.5 M	592.83 M	596.59	13.80	596.54	13.80
LOKTAK	768.5 M	766.2 M	766.68	16.70	766.86	23.00
BARAPANI	3220 Ft	3150 Ft	3174.56	10.78	3171.85	9.28
GUMTI	93.55 M	83.6 M	83.60	1.11	83.60	1.11
DOYANG	333 M	306 M	308.75	2.65	307.06	1.30

FREQUENCY ANALYSIS FOR THE MONTH OF : Apr-12

Frequency	(Freq.in Hz)	(Time: H:M)	(Date:D.M.Y)
1. Maximum frequency	51.62	21:12	25-Apr-12
2. Minimum frequency	49.12	19:13	02-Apr-12
3. Monthly average	49.94		

Frequency in Hz as %age of time for the blocks :

f < 49.5	49.5 < f < 50.2	f > 50.2
3.0%	91.4%	5.7%

Daily Frequency Variation Index :

DATE	FVI	DATE	FVI
1-Apr-12	0.290	17-Apr-12	0.720
2-Apr-12	0.560	18-Apr-12	0.750
3-Apr-12	1.000	19-Apr-12	1.320
4-Apr-12	0.630	20-Apr-12	0.650
5-Apr-12	0.500	21-Apr-12	0.500
6-Apr-12	0.035	22-Apr-12	0.350
7-Apr-12	0.280	23-Apr-12	0.470
8-Apr-12	0.280	24-Apr-12	0.410
9-Apr-12	0.320	25-Apr-12	0.410
10-Apr-12	0.174	26-Apr-12	0.410
11-Apr-12	0.340	27-Apr-12	0.260
12-Apr-12	0.230	28-Apr-12	0.240
13-Apr-12	0.250	29-Apr-12	0.190
14-Apr-12	0.350	30-Apr-12	0.270
15-Apr-12	0.320		
16-Apr-12	0.540	Average FVI	0.435

Annexure-III

Details of Scheduled Bilateral Exchanges within the Region in

Apr-12

Sl.No.	From	To	Energy (At Seller Injn. Point) (MWH)		Energy (At State Periphery) (MWH)
1	Tripura (Baramura-IV)	Manipur	-3358.750000		-3259.700612
2	Tripura (Baramura-IV)	Mizoram	0.000000		0.000000
3	Tripura (Baramura-V)	Manipur	-2686.375000		-2608.015982
4	Tripura (Baramura-V)	Mizoram	-2686.375000		-2592.831082
5	ASEB	POWERGRID^	198.964150	^ The actual energy consumed by POWERGRID	

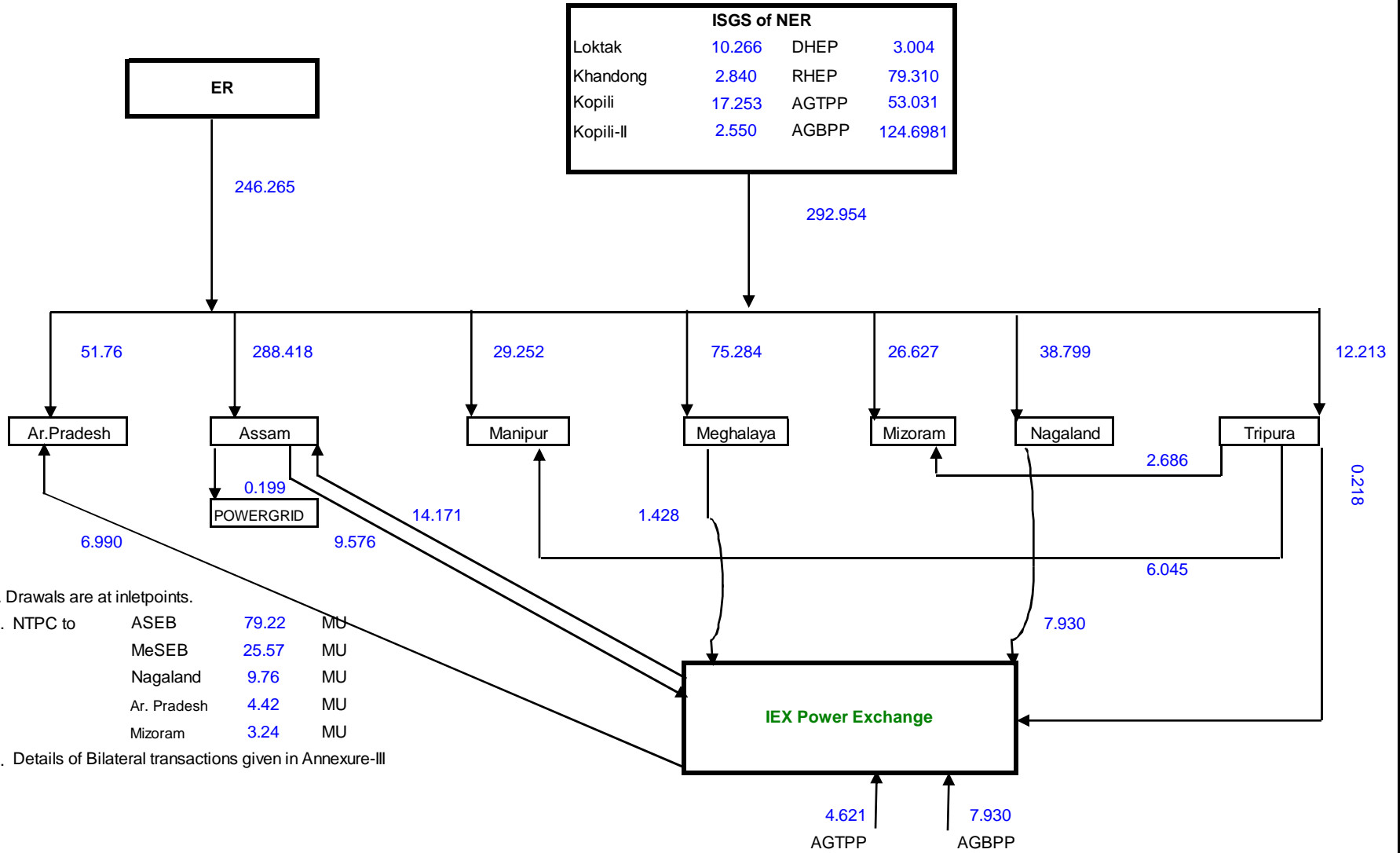
Scheduled Bilateral Exchange with SEBs / Organisations in other Regions

Sl.No.	From	To	Energy (At Seller Periphery) (MWH)	Energy (At NER-ER Periphery) (MWH)	Energy (At Buyer Periphery) (MWH)
1	SEL	APDCL (GMRETL)		74810.000000	73595.980000
2	WBSEDCL	MeECL (NVVN)		8096.000000	7939.930000
3	HPPC	TSECL (NVVN)		7200.000000	7103.520000
4	TSECL	WBSEDCL (NVVN)	-187.220000	-184.040000	
5	Farakka*	Ar. Pradesh	1965.785525	1944.325000	1918.278225
6	Kahalgaon 1*	Ar. Pradesh	1031.121000	1019.450000	1005.776700
7	Talcher*	Ar. Pradesh	1424.328125	1406.525000	1387.691363
8	Farakka*	Assam	20002.554275	19740.500000	19418.829675
9	Kahalgaon 1*	Assam	8807.118000	8663.425000	8522.225138
10	Kahalgaon 2*	Assam	37839.552850	37227.050000	36621.243875
11	Talcher*	Assam	12566.640125	12397.425000	12195.495000
12	Farakka*	MeECL	6108.197425	6027.500000	5911.804113
13	Kahalgaon 1*	MeECL	3178.559000	3132.025000	3071.932000
14	Kahalgaon 2*	MeECL	11965.076000	11764.125000	11538.958163
15	Talcher*	MeECL	4322.224625	4256.225000	4174.578325
16	Farakka*	Nagaland	4396.968200	4345.350000	4274.541163
17	Kahalgaon 1*	Nagaland	2278.489250	2245.125000	2208.529113
18	Talcher*	Nagaland	3084.636000	3045.275000	2995.675088
19	Farakka*	Mizoram	1451.873875	1432.025000	1404.539775
20	Kahalgaon 1*	Mizoram	761.805500	745.550000	731.245150
21	Talcher*	Mizoram	1024.196375	1008.325000	988.989187

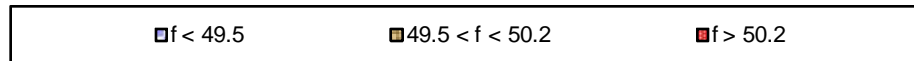
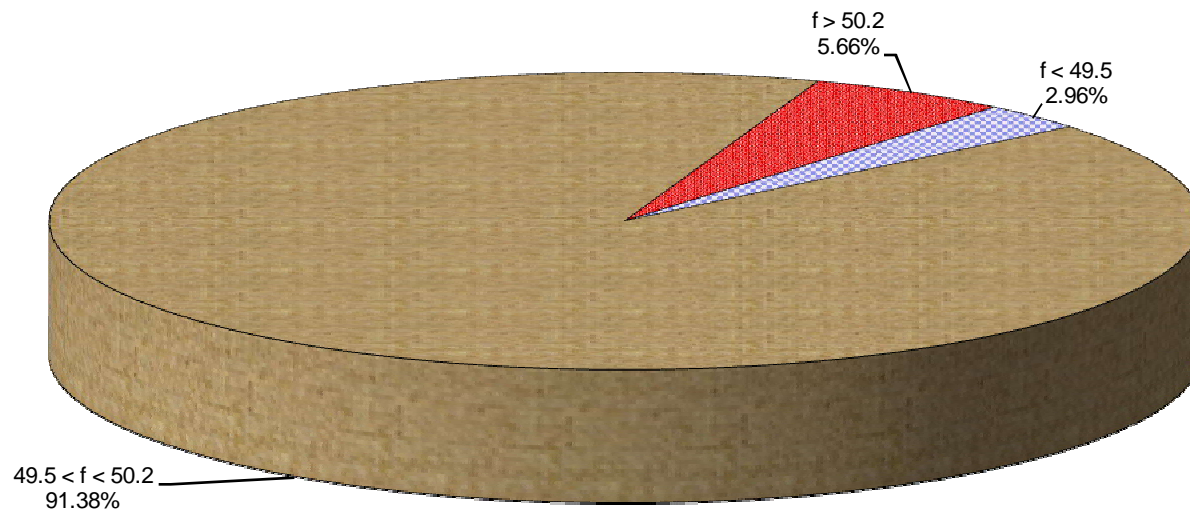
Bilateral exchange through IEX Power Exchange (-ve means injection, +ve means drawal)

22	Ar. Pradesh			7085.200000	6990.200000
23	Assam		-9575.510000	-9420.000000	
24	Assam			14406.900000	14170.800000
25	MeECL		-1428.470000	-1400.950000	
26	MeECL			2615.900000	2565.380000
27	Tripura		-218.460000	-215.000000	
28	NEEPCO (AGBPP)		-7930.285000	-7800.207500	
29	NEEPCO (AGTPP)		-4620.550000	-4544.532500	

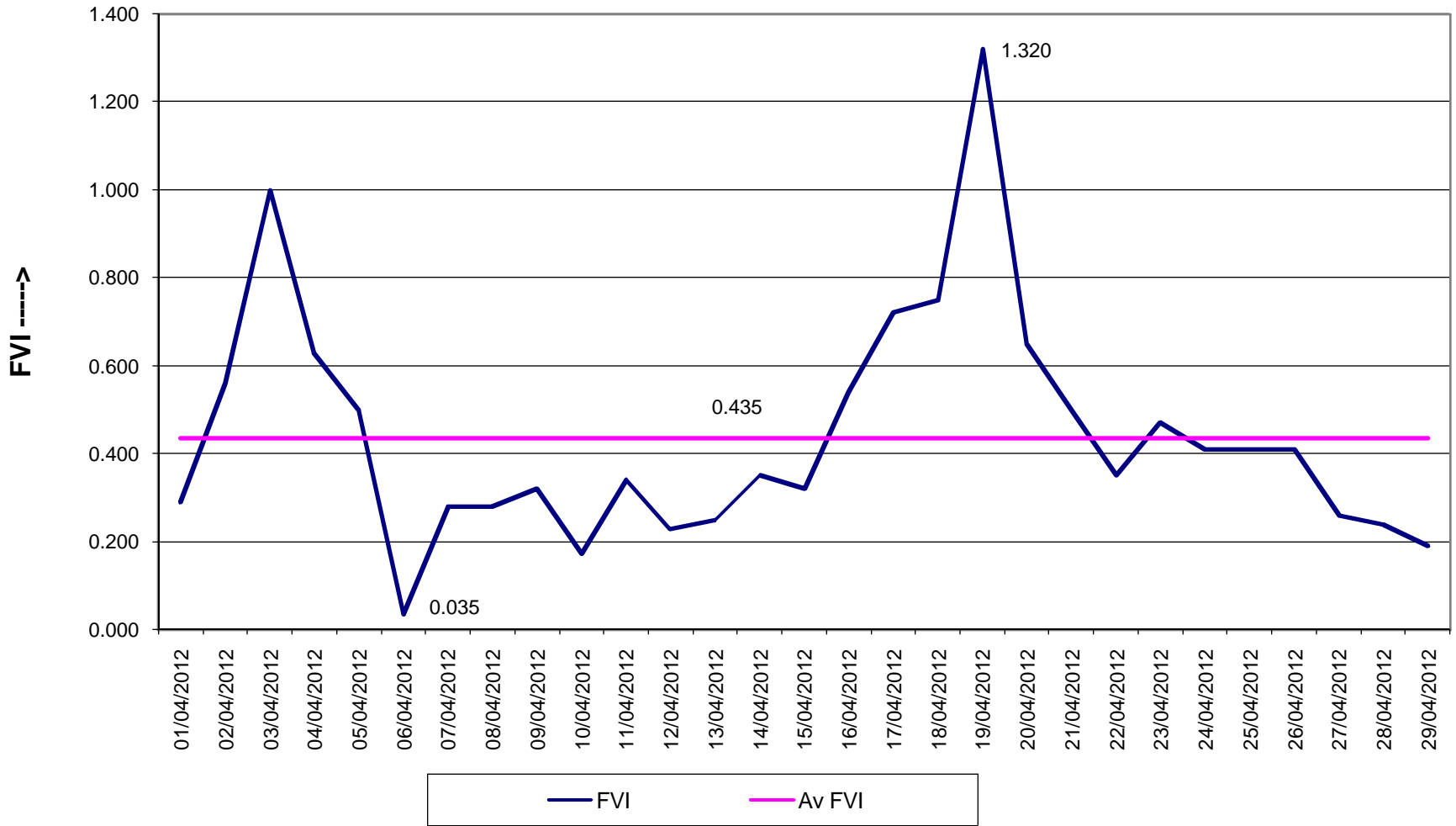
ENERGY EXCHANGE(in MU) IN NER DURING April, 2012



Frequency Duration for April, 2012

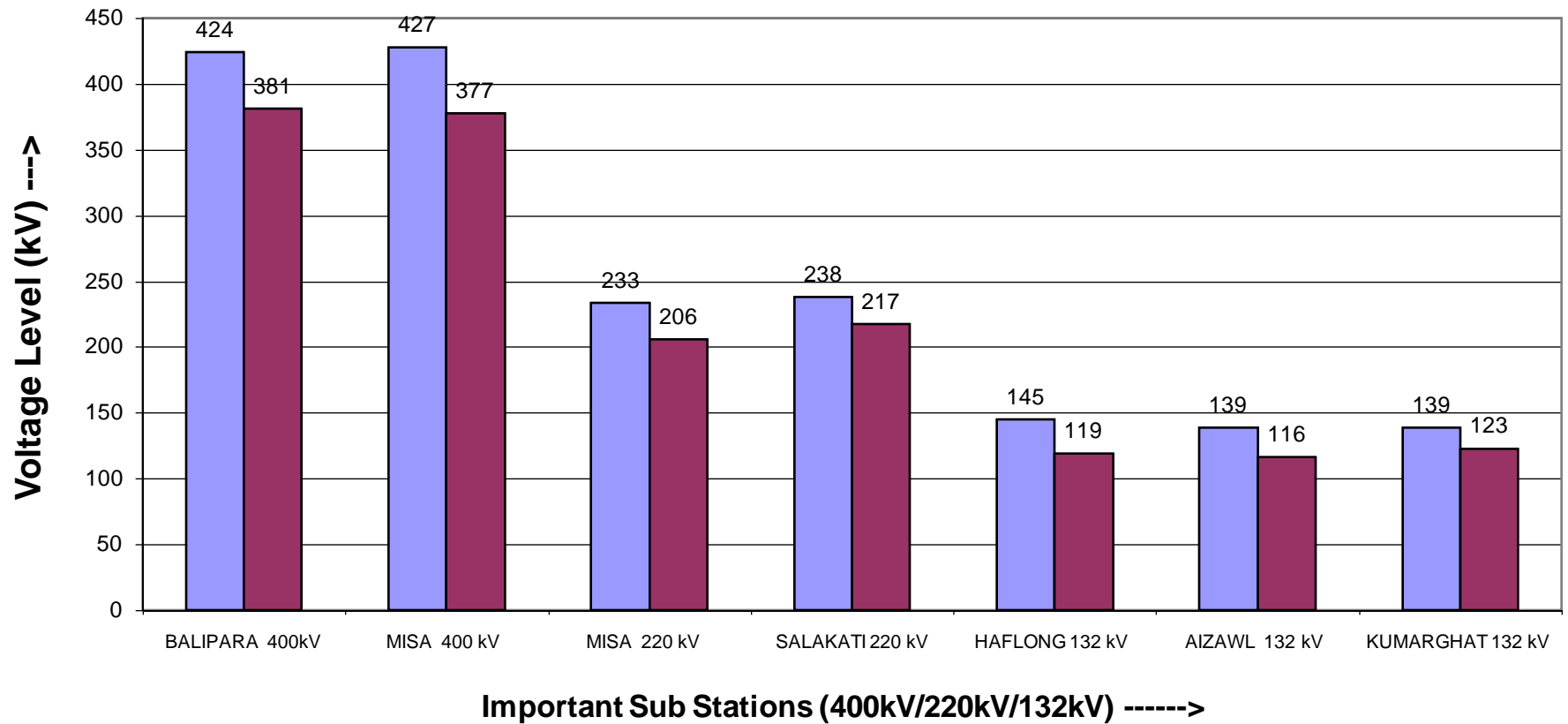


FVI Characteristics for April, 2012

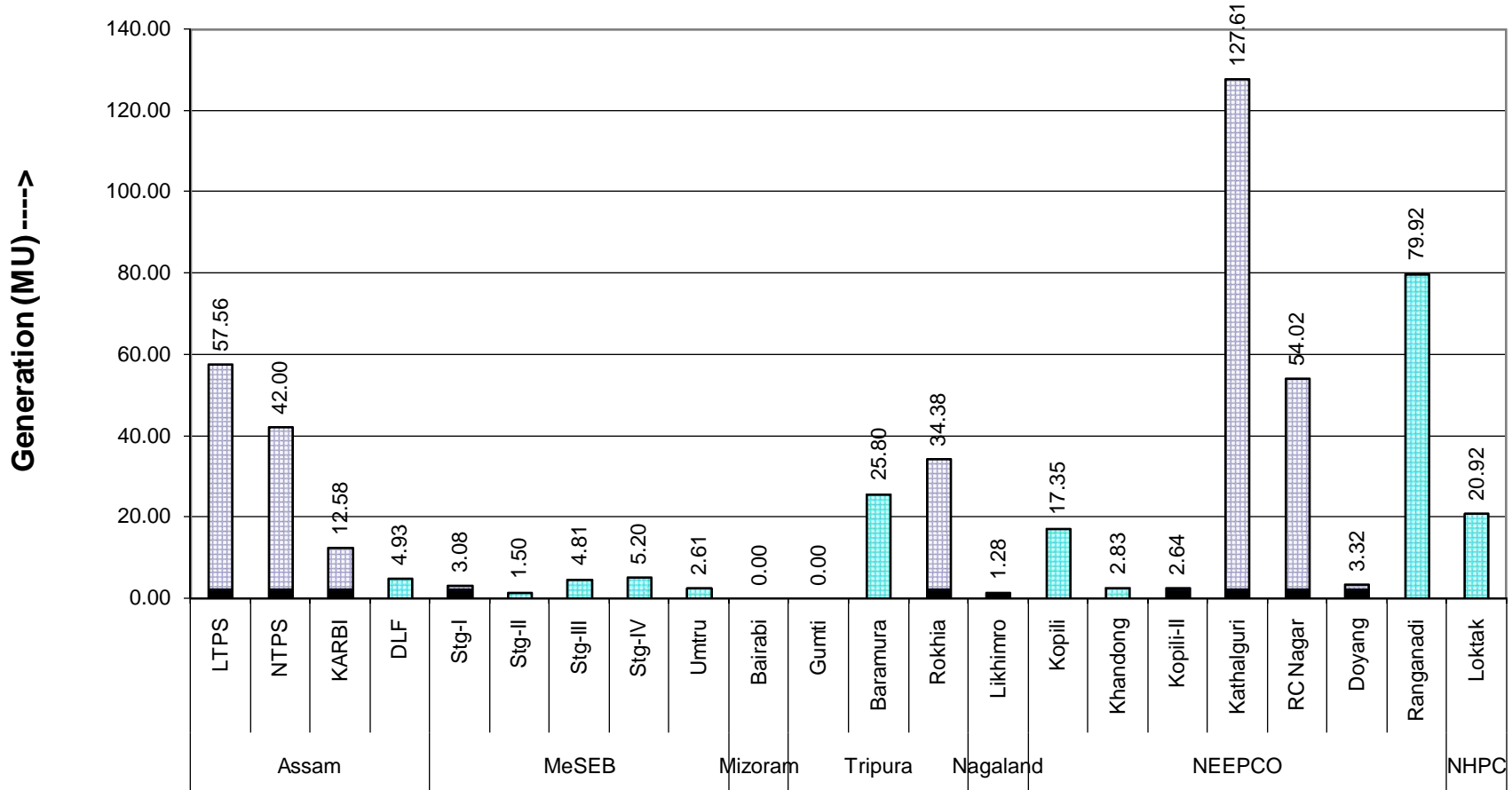


Maximum & Minimum Voltage Levels of Important Substations in NER during

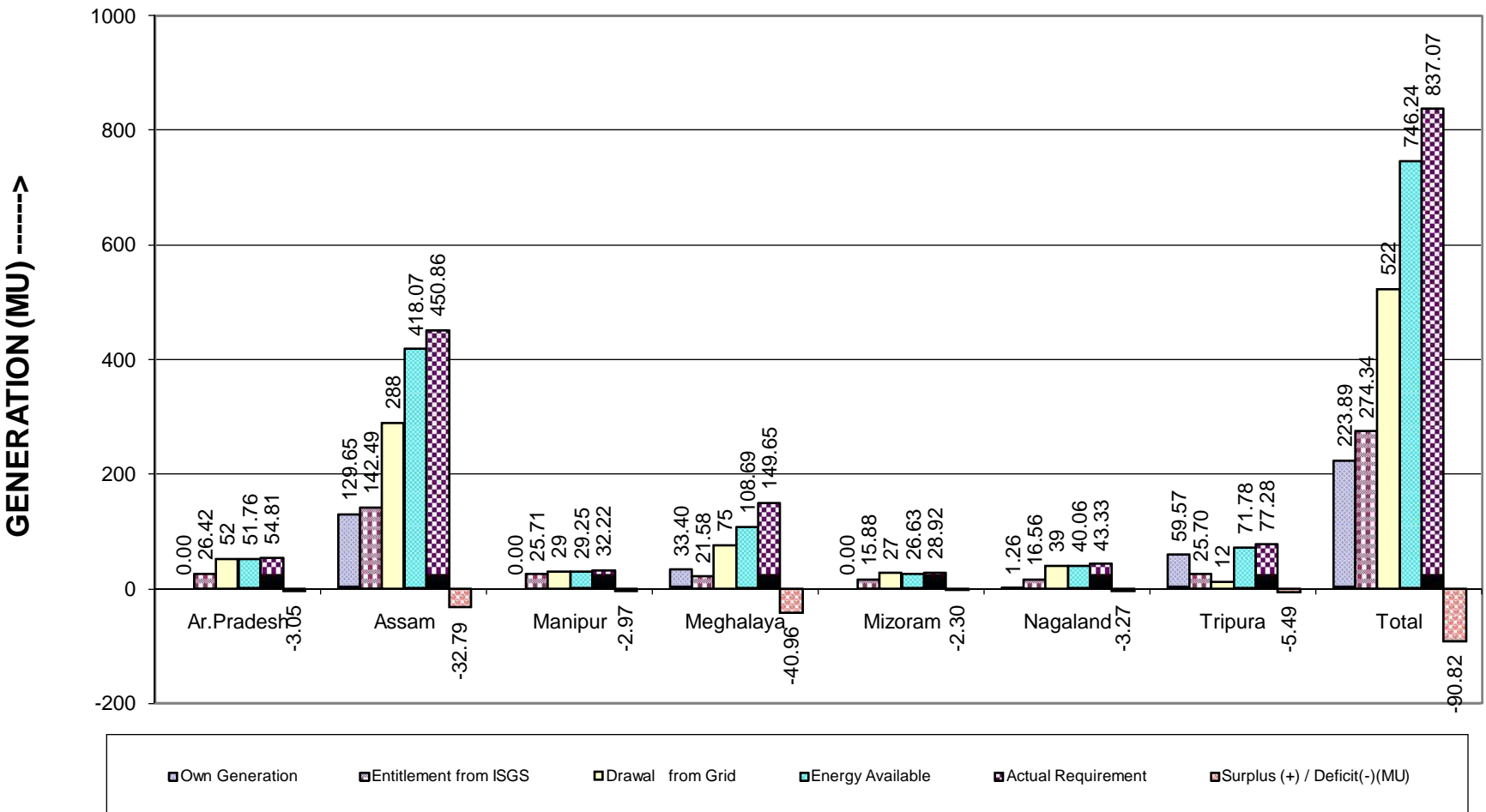
April, 2012



State and Central Sector Generation (MU) in NER in April, 2012



NER States Energy Scenario in April, 2012



Reservoir Statistics of NER in April, 2012

